



MODEL T26868 MANUAL ROTARY SHEAR INSTRUCTIONS

For questions or help with this product contact Tech Support at (570) 546-9663 or techsupport@grizzly.com

Introduction

The Model T26868 Manual Rotary Shear is capable of cutting smooth curves into sheet metal up to 2mm thick, with a "throatless" frame design that allows for unlimited material width. The ratcheting handle and two circular blades provide excellent feeding control and manipulation of the workpiece.

Specifications

Max. Material Thickness 14 Gauge
Min. Shearing Radius 1 in.
Shearing Width No Limit

CAUTION

Mount shear securely to workbench. Failure to do so could cause tool to fall during use and result in serious crushing injury.

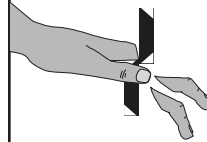
Mounting and Assembly

1. Place shear on workbench, and use holes in base to mark drilling location on workbench.
2. Drill mounting holes and attach shear to workbench with (4) 10mm or 3/8" hex bolts, hex nuts, and flat washers (not included).

Note: For strongest mounting, we recommend using hex bolts to mount shear to workbench. Otherwise, fasten directly to workbench with lag bolts and flat washers.

3. Mount ratchet handle to upper blade shaft so ratchet turns blade when pressing down on handle toward front of tool.

WARNING



AMPUTATION HAZARD!
Do not place hands or fingers in blade path while feeding. Doing so could result in lacerations or amputation!

Basic Operation

1. Mark cut line on workpiece.
2. Place workpiece on infeed side of shear body (see **Figure 1**) and align cut line with blades.

— If necessary have a helper support free end of workpiece.

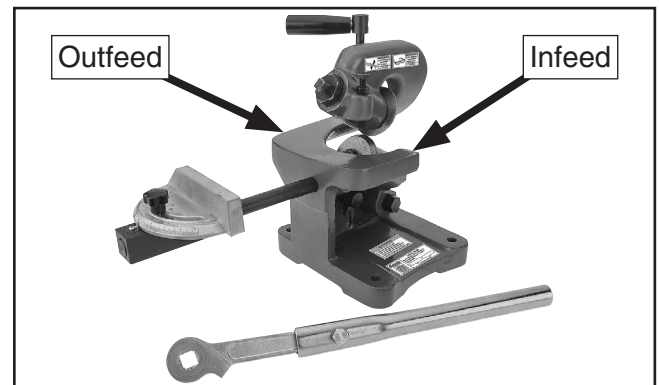


Figure 1. Model T26868.

3. Push ratcheting handle down toward front of tool to turn blades, initiating cut.
4. Return handle to starting position and repeat **Step 3** until shearing operation is complete.

COPYRIGHT © OCTOBER, 2014 BY GRIZZLY INDUSTRIAL, INC.
NO PORTION OF THIS MANUAL MAY BE REPRODUCED IN ANY SHAPE
OR FORM WITHOUT THE WRITTEN APPROVAL OF GRIZZLY INDUSTRIAL, INC.

#WK16813 PRINTED IN CHINA

V1.10.14

Blade Adjustment

The gap between the upper and lower blade may need to be adjusted depending on the material you are shearing. In general, the thicker the material, the greater the blade gap should be.

If the blade gap is too large, burrs can form on the sheared edges. A gap which is too small can cause difficulty in the shearing operation.

Some amount of experimentation may be necessary to achieve the desired results.

To adjust blade gap:

1. Using a 19mm open-end wrench, loosen both M12-1.75 hex nuts shown in **Figure 2**.

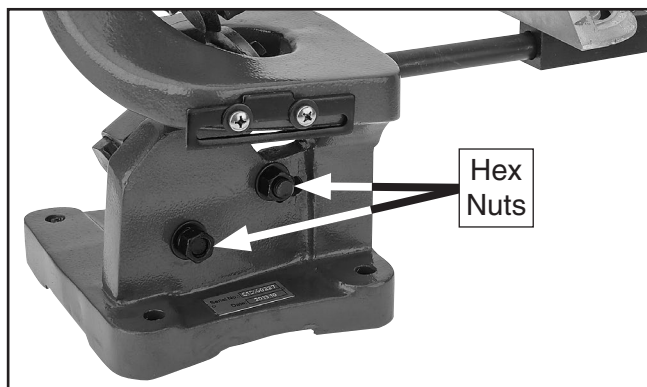


Figure 2. Location of blade adjustment hex nuts.

2. Using a 22mm open-end wrench, rotate blade adjustment shaft (**Figure 3**) to set desired blade gap.

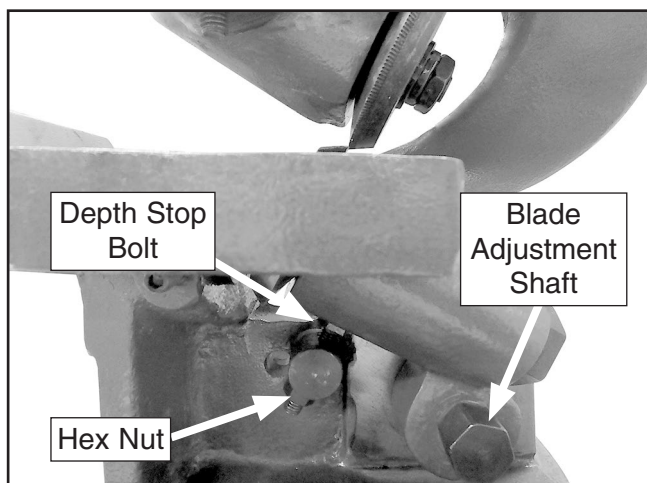


Figure 3. Location of blade adjustment shaft and depth stop.

3. Using a 13mm open-end wrench, rotate depth stop bolt (see **Figure 3**) until blades overlap approximately $\frac{1}{8}$ ".
4. Tighten hex nut shown in **Figure 3** to lock depth stop bolt.
5. Tighten hex nuts loosened during **Step 1**.
6. Test shearing operation on a piece of scrap material that is same thickness as workpiece. If necessary, repeat **Steps 1–6**.

Using Miter Gauge

When shearing straight lines, we recommend using the included miter gauge as a guide.

To install miter gauge:

1. Insert guide shaft into shear body and secure set screw shown in **Figure 4**.

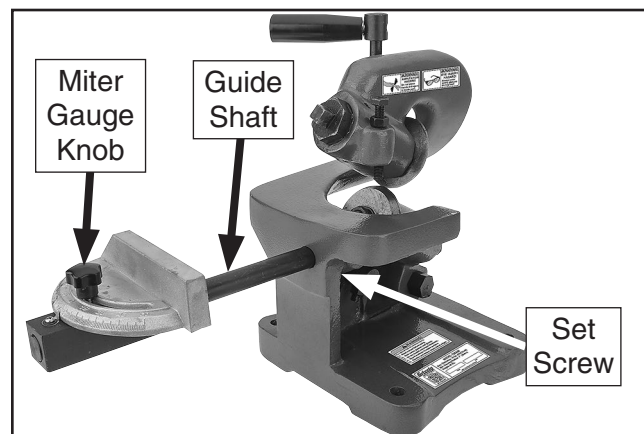
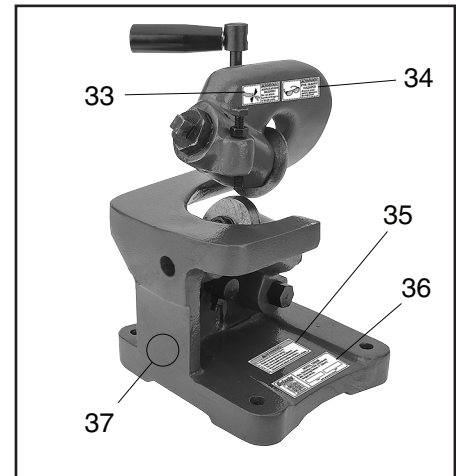
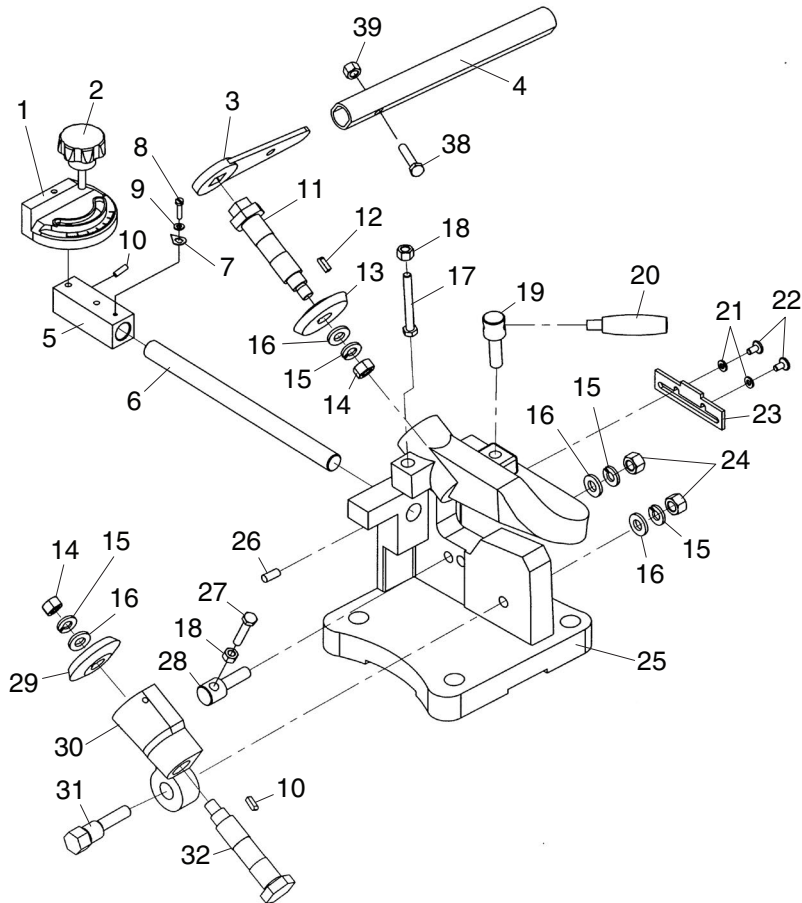


Figure 4. Miter gauge installed.

2. Loosen miter gauge knob (see **Figure 4**), adjust miter gauge to desired angle, then tighten knob.
3. Proceed with shearing operation, as described in **Steps 1–4** of **Basic Operation** on **Page 1**, using miter gauge as a fence to guide workpiece.



T26868 Parts Breakdown



REF PART #	DESCRIPTION
1	PT26868001 MITER GAUGE
2	PT26868002 MITER GAUGE KNOB
3	PT26868003 RATCHETING HANDLE 1/2"
4	PT26868004 RATCHETING HANDLE EXTENSION
5	PT26868005 GUIDE BLOCK
6	PT26868006 GUIDE SHAFT
7	PT26868007 ANGLE INDICATOR
8	PT26868008 PHLP HD SCR M4-.7 X 8
9	PT26868009 FLAT WASHER 4MM
10	PT26868010 SET SCREW M6-1 X 8
11	PT26868011 UPPER SHAFT
12	PT26868012 KEY 5 X 5 X 10
13	PT26868013 UPPER BLADE
14	PT26868014 HEX NUT M12-1.75
15	PT26868015 LOCK WASHER 12MM
16	PT26868016 FLAT WASHER 12MM
17	PT26868017 HEX BOLT M8-1.25 X 10
18	PT26868018 HEX NUT M8-1.25
19	PT26868019 HANDLE SHAFT
20	PT26868020 HANDLE

REF PART #	DESCRIPTION
21	PT26868021 FLAT WASHER 6MM
22	PT26868022 PHLP HD SCR M6-1 X 16
23	PT26868023 TROUGH PLATE
24	PT26868024 HEX NUT M12-1.75
25	PT26868025 SHEAR BODY
26	PT26868026 SET SCREW M8-1.25 X 30
27	PT26868027 HEX BOLT M8-1.25 X 40
28	PT26868028 THREADED SHAFT M8-1.25
29	PT26868029 LOWER BLADE
30	PT26868030 SHAFT HOUSING
31	PT26868031 BLADE ADJUSTMENT SHAFT
32	PT26868032 LOWER BLADE SHAFT
33	PT26868033 AMPUTATION HAZARD WARNING LABEL
34	PT26868034 EYE INJURY HAZARD WARNING LABEL
35	PT26868035 MACHINE WARNING LABEL
36	PT26868036 MACHINE ID LABEL
37	PT26868037 GRIZZLY GREEN TOUCH-UP PAINT
38	PT26868038 HEX BOLT M10-1.5 X 35
39	PT26868039 HEX NUT M10-1.5

Please Note: We do our best to stock replacement parts whenever possible, but we cannot guarantee that all parts shown here are available for purchase. Call (800) 523-4777 or visit our online parts store at www.grizzly.com to check for availability.





MACHINE DATA SHEET

© Grizzly Industrial, Inc. • Customer Service: (800) 523-4777 • Tech Support: (570) 546-9663

MODEL T26868 MANUAL SHEAR

Product Dimensions:

Weight 47 lbs.
 Width (side-to-side) x Depth (front-to-back) x Height 17 x 9 x 12½ in.
 Foot Print (Length/Width)..... 7½ x 8 in.

Shipping Dimensions:

Type Cardboard Box
 Weight..... 49 lbs.
 Length/Width/Height..... 13 x 10 x 14 in.
 Must Ship Upright No

Main Specifications:

Upper Blade Diameter 65mm
 Lower Blade Diameter 65mm
 Maximum Length of Single Cut..... Unlimited
 Mounting Bolt Hole Diameter..... ½ in.

Capacities:

Maximum Material Thickness 14 Gauge, 0.08 in. (2mm)
 Maximum Material Width Unlimited
 Miter Gauge Angle Left 60 – Right 60 deg.

Construction:

Shear Blades T10A Steel
 Frame..... Cast Iron

Other Specifications:

Country of Origin..... China
 Warranty..... 1 Year
 Serial Number Location ID Label on Base
 Assembly Time 5 Minutes

Features:

- Dual rotary blades for cutting curves and complex shapes
- "Throatless" frame allows for unlimited workpiece width
- Miter gauge for cutting straight lines at various angles
- Ratcheting handle provides excellent control of workpiece
- Heavy-duty cast iron frame mounts to workbench

