



MODEL T32730 OUTBOARD TURNING ATTACHMENT FOR G0733/G0766 INSTRUCTIONS

For questions or help with this product contact Tech Support at (570) 546-9663 or techsupport@grizzly.com

Introduction

The Model T32730 Outboard Turning Attachment is designed to fit on the Model G0733/G0766 lathes. The 22³/₄" bed extension can be installed to support a tool rest and replace a floor-mounted tool post for outboard turning operations.

Inventory

Description (Figure 1)	Qty
A. Bed Extension	1
B. Outboard Extension Shaft	1
C. Cap Screws M10-1.5 x 25	3
D. Adjustable Handle M10-1.5 x 18, 70L	1
E. Hex Wrench 8mm	1

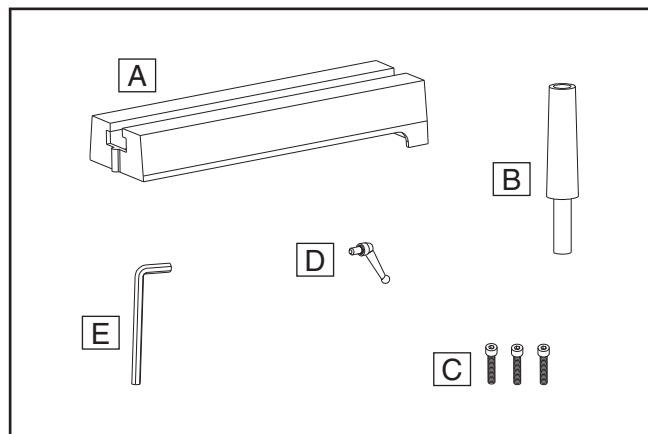
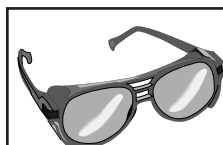


Figure 1. Inventory.



! WARNING
Wear safety glasses during the entire setup process!

Installation

Refer to **Outboard Turning** in the **Model G0733/G0766 Owner's Manual** to slide the tailstock and tool rest off of the bed, and position the headstock for outboard turning operations.

To install outboard turning attachment:

1. Attach bed extension to lathe with (3) M10-1.5 x 25 cap screws (see **Figure 2**).

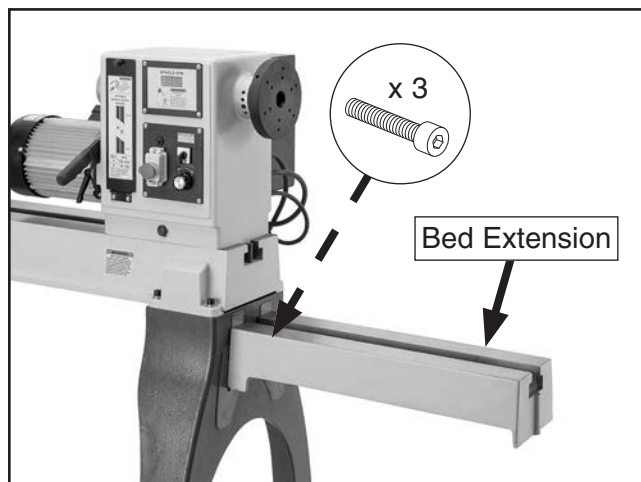


Figure 2. Bed extension attached to lathe.

2. Remove tool rest from tool rest base.

COPYRIGHT © MAY, 2022 BY GRIZZLY INDUSTRIAL, INC., REVISED AUGUST, 2023 (CS)
NO PORTION OF THIS MANUAL MAY BE REPRODUCED IN ANY SHAPE
OR FORM WITHOUT THE WRITTEN APPROVAL OF GRIZZLY INDUSTRIAL, INC.
(FOR MODELS MFD. SINCE 01/22) #CS22255 PRINTED IN CHINA

V1.08.23

*****Keep for Future Reference*****

3. Slide tool rest base onto bed extension (see **Figure 3**). Clamp plate must be aligned with extension bed to sit flush (see **Figure 4**).

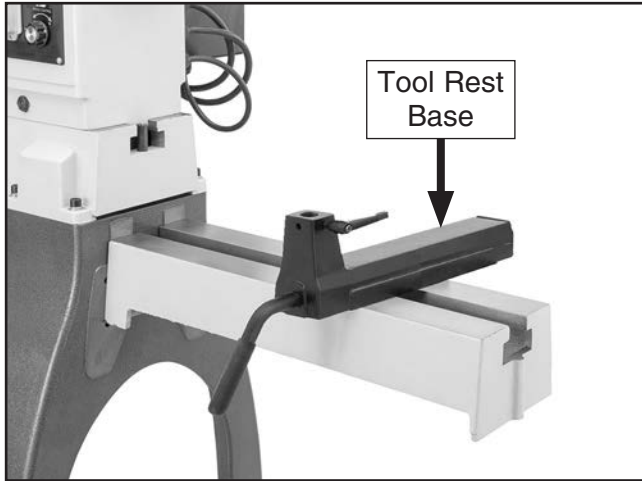


Figure 3. Tool rest base on bed extension.

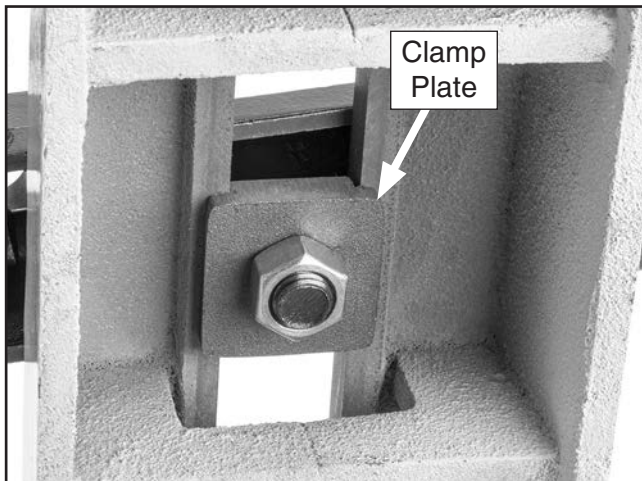


Figure 4. Clamp plate aligned with extension bed.

4. Use tool rest base lock lever to secure tool rest base on bed extension.

Note: If lock lever does not secure tool rest base, tighten hex nut securing clamp plate until it does.

5. Install outboard extension shaft in tool rest base hole, then secure with tool rest lock handle (see **Figure 5**).

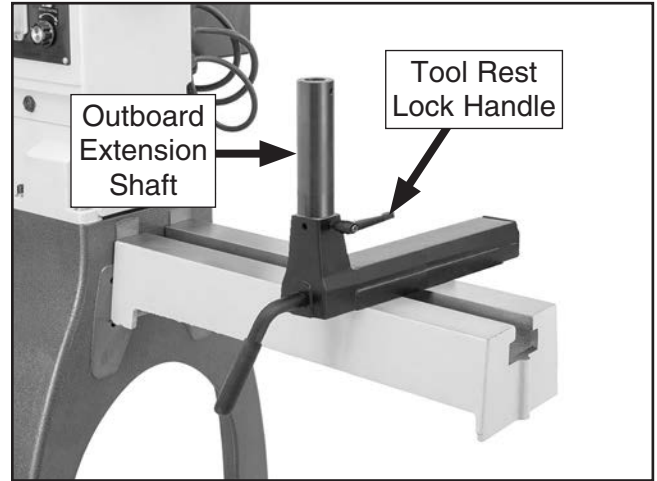


Figure 5. Outboard extension shaft installed in base.

6. Install tool rest in outboard extension shaft, then secure with adjustable handle (see **Figure 6**).

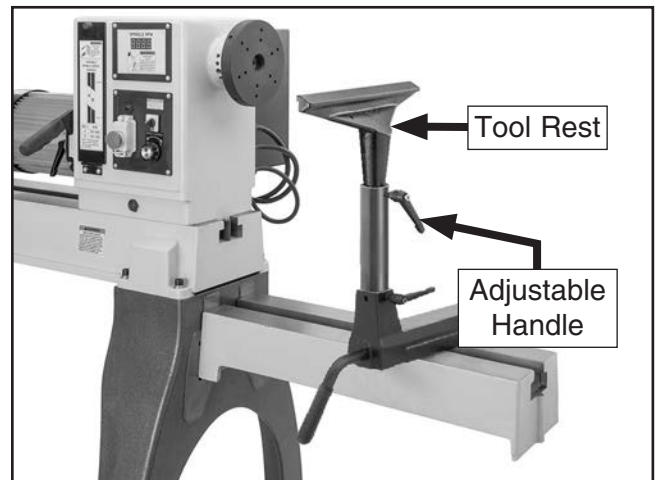


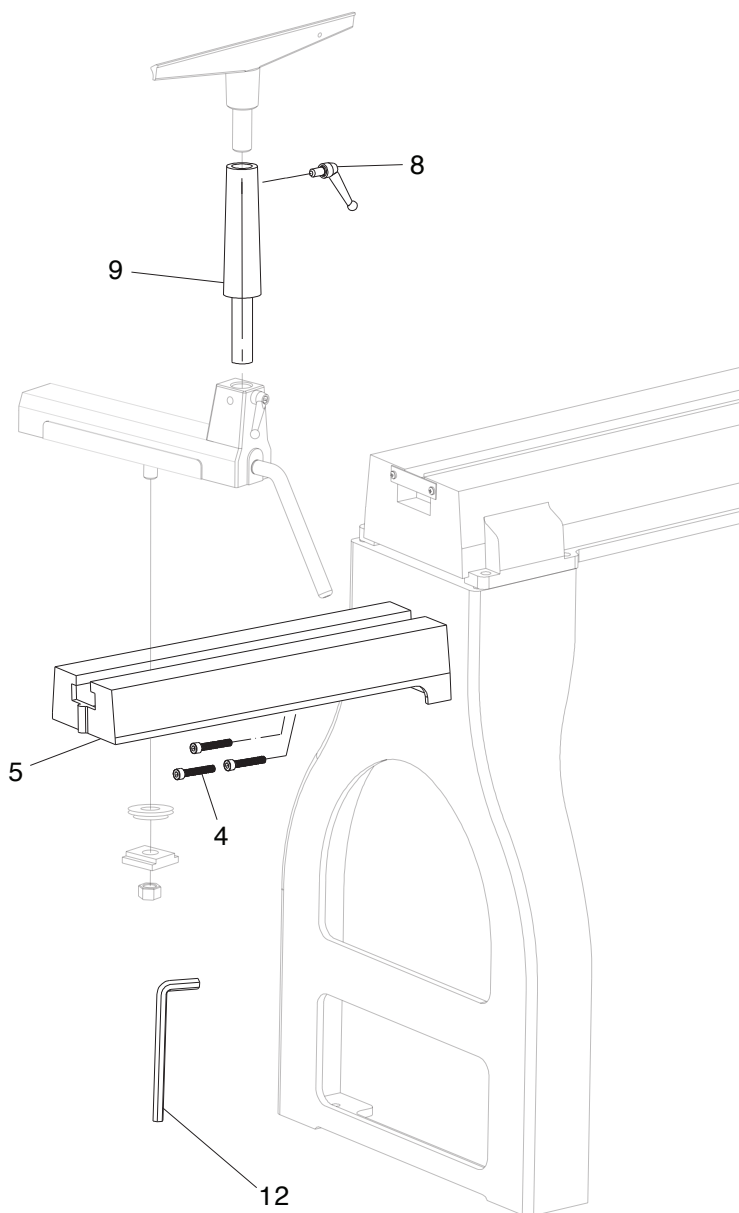
Figure 6. Tool rest installed in outboard extension shaft.

Refer to **Model G0733/G0766 Owner's Manual** for instructions on operating lathe.

If you need help with your new outboard turning attachment, call Tech Support at: (570) 546-9663.



T32730 Parts Breakdown & List



REF	PART #	DESCRIPTION
4	PT32730004	CAP SCREW M10-1.5 X 25
5	PT32730005	BED EXTENSION
8	PT32730008	ADJUSTABLE HANDLE M10-1.5 X 18, 70L

REF	PART #	DESCRIPTION
9	PT32730009	OUTBOARD EXTENSION SHAFT
12	PT32730012	HEX WRENCH 8MM

Please Note: We do our best to stock replacement parts whenever possible, but we cannot guarantee that all parts shown here are available for purchase. Call **(800) 523-4777** or visit our online parts store at **www.grizzly.com** to check for availability.





Buy Direct and Save with Grizzly® – Trusted, Proven and a Great Value!
~Since 1983~

*Visit Our Website Today For
Current Specials!*

**ORDER
24 HOURS A DAY!
1-800-523-4777**

