

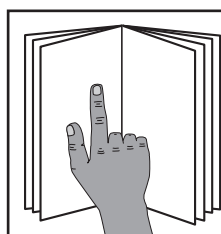


For questions or help with this product contact Tech Support at (570) 546-9663 or techsupport@grizzly.com

# MODEL T32732 BENCH GRINDER SHARPENING SYSTEM INSTRUCTIONS

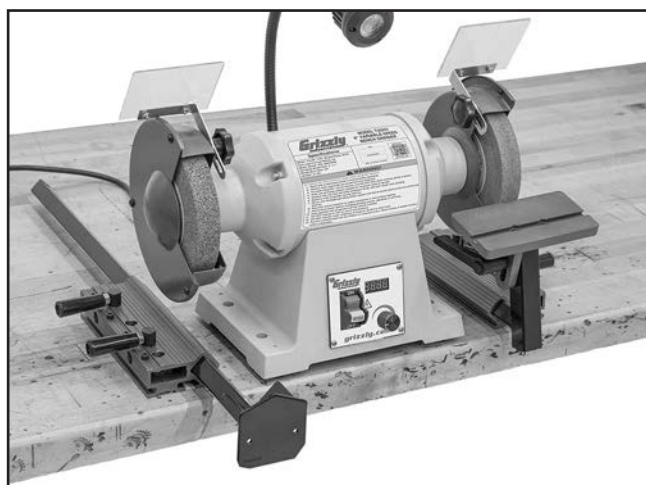
## Introduction

The Model T32732 Bench Grinder Sharpening System replaces the light-duty tool rests on your 6"–8" bench grinder and provides an easily adjustable platform for sharpening chisels, gouges, and other woodworking tools.



## !WARNING

To reduce your risk of serious injury, read this entire manual **BEFORE** using machine.



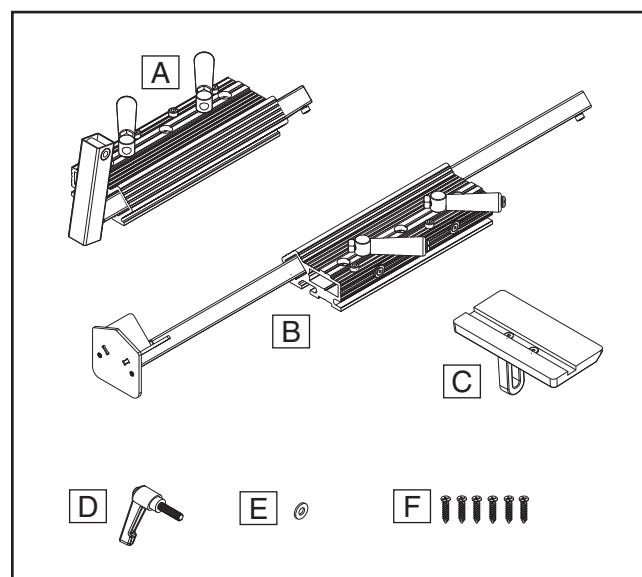
**Figure 1.** Model T32732 installed for use with bench grinder.

## Specifications

Table Size.....3" x 6"  
T-Slot Size ..... $\frac{5}{16}$ "  
Weight .....6 lbs.

## Inventory

Description	Qty
A. Short Arm Assembly .....	1
B. Long Arm Assembly .....	1
C. Table.....	1
D. Adjustable Handle $\frac{5}{16}$ "-18 x $1\frac{1}{2}$ ".....	1
E. Flat Washer $\frac{5}{16}$ " .....	1
F. Wood Screws $\frac{1}{4}$ " x $1\frac{1}{4}$ " .....	6



**Figure 2.** Inventory.

## NOTICE

If you cannot find an item on this list, carefully check around/inside the machine and packaging materials. Often, these items get lost in packaging materials while unpacking or they are pre-installed at the factory.

## Assembly

The Model T32732 must be assembled and mounted around your bench grinder. Both the grinder and the sharpening system should be placed as close as possible to the workbench edge so arms can be adjusted correctly.



Items Needed	Qty
Measuring Tape.....	1
Wooden Spacer Block.....	As Needed
Machinist's Square .....	1
Cordless Drill .....	1
Phillips Head Bit #2 .....	1

### To assemble sharpening system:

1. Measure from workbench surface to center of grinding wheels on bench grinder (see **Figure 3**).

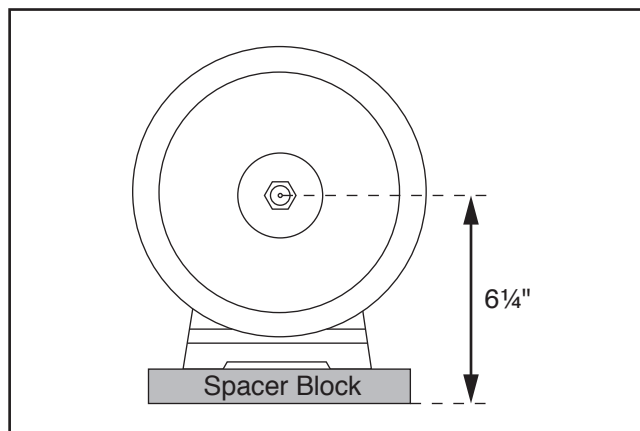


**Figure 3.** Example of distance to measure (wheel guard removed for clarity).

— If distance is at least 6¼", no adjustment is required.

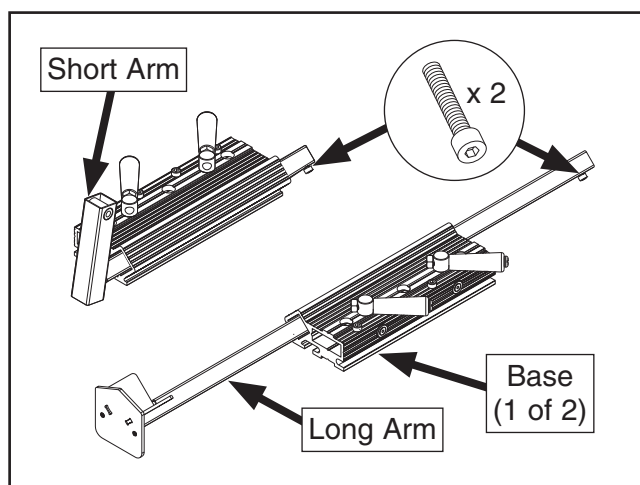
— If distance is less than 6¼", mount your bench grinder on top of a spacer block to increase distance to 6¼" (see **Figure 4**).

**Note:** If mounting on spacer block, any rubber machine feet on grinder should be removed from machine base and re-installed under spacer block.



**Figure 4.** Illustration of spacer block used to increase distance.

2. Remove (1) cap screw from each arm (see **Figure 5**) in order to remove arms from bases.

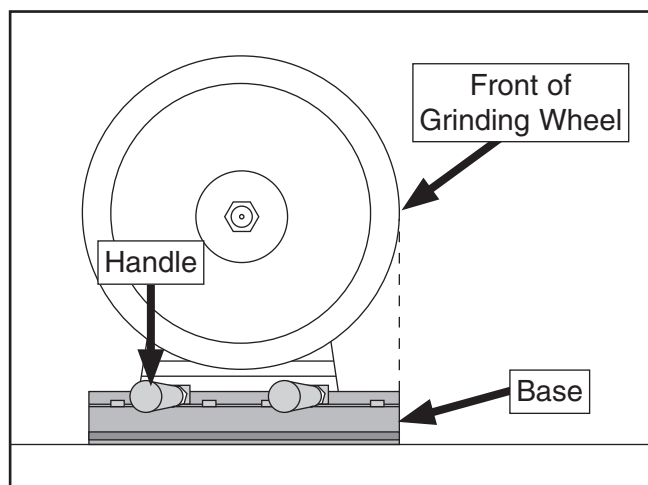


**Figure 5.** Location of cap screws in arms.



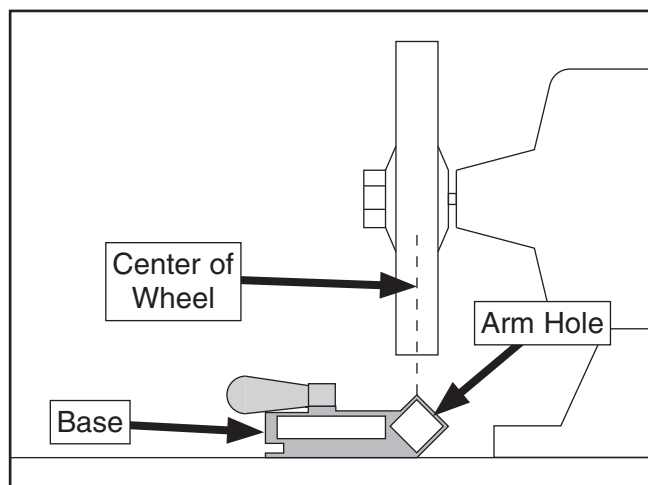
- Align front of (1) base with front of left grinding wheel (see **Figure 6**).

**Note:** Handles should face away from grinder (see **Figure 6**).



**Figure 6.** Aligning base with front of wheel.

- While keeping base aligned with wheel front, adjust base so arm hole aligns with center of left wheel (see **Figure 7**).

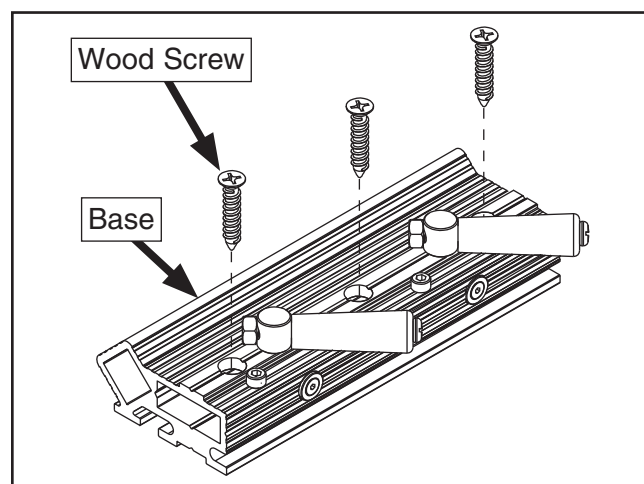


**Figure 7.** Aligning base with center of wheel.

- Repeat **Steps 3–4** with remaining base and right grinding wheel.

**IMPORTANT:** Front edge of each base should be within  $\frac{1}{2}$ " of workbench front edge. If bases are not within  $\frac{1}{2}$ ", move grinder and bases forward while maintaining adjustments from previous steps.

- Mount each base to workbench using (3)  $\frac{1}{4}$ " x  $\frac{1}{4}$ " wood screws (see **Figure 8**).



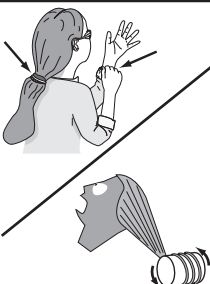
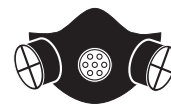
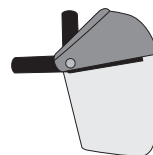
**Figure 8.** Mounting base to workbench with wood screws.

## Sharpening Using Long Arm

The long arm can be installed in either base to provide a place to rest the handle of woodturning tools. The V-holder allows you to rotate or pivot the tool against the grinding wheel, which is useful when sharpening gouges and skew chisels.

## ⚠ WARNING

Eye and face injuries and respiratory problems can occur while operating this tool. Wear personal protective equipment to reduce your risk from these hazards.



## ⚠ WARNING

Keep hair, clothing, and jewelry away from moving parts at all times. Entanglement can result in death, amputation, or severe crushing injuries!

## Tool Needed

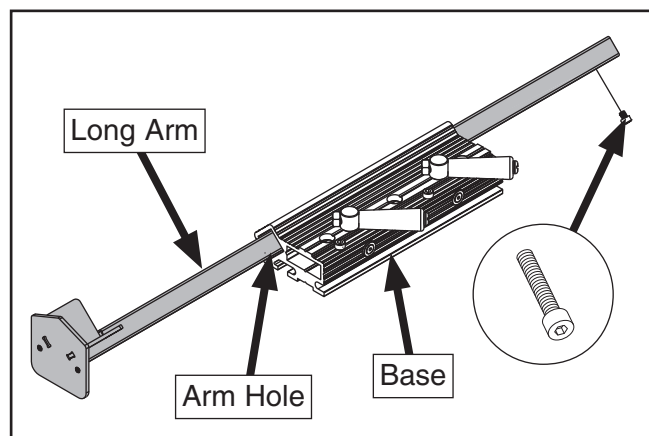
Hex Wrench 3mm..... 1

## Qty



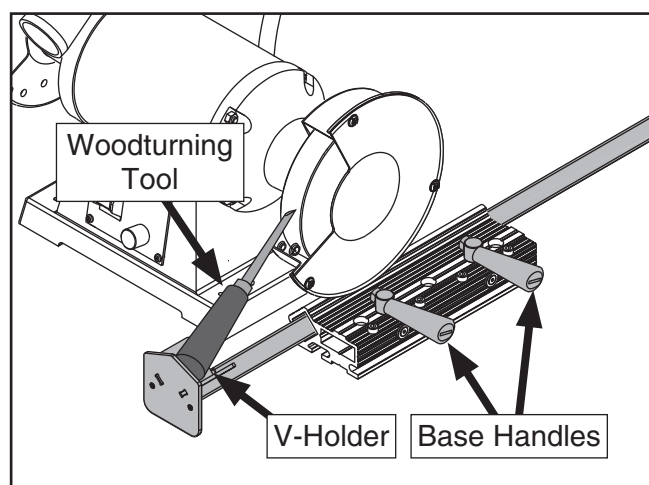
## To sharpen using long arm:

1. DISCONNECT GRINDER FROM POWER!
2. Insert long arm into desired base arm hole, then install cap screw removed from long arm during assembly to secure (see **Figure 9**).



**Figure 9.** Example of long arm inserted into base.

3. Place woodturning tool handle in V-holder at front of long arm (see **Figure 10**).
4. Adjust long arm until entire bevel of tool contacts grinding wheel, then secure position by pulling base handles forward (see **Figure 10**).



**Figure 10.** Example of woodturning tool supported by long arm.

5. Tilt tool away from grinding wheel, connect grinder to power, and turn machine **ON**.
6. Use firm grip to return tool to surface of grinding wheel to perform grinding operation.

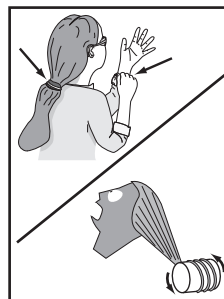
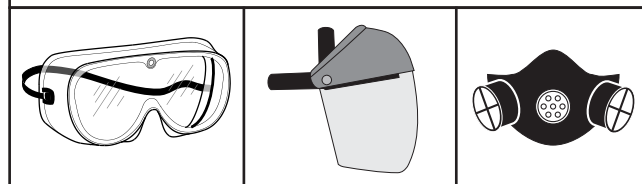
**Note:** See *Sharpening Gouges* and *Sharpening Chisels* on **Page 6** for more information on tool sharpening techniques.

## Sharpening Using Short Arm

The short arm can be installed in either base to attach the adjustable table included with the sharpening system. Rest the shaft of a woodworking tool on the table and pivot or rotate the tool against the grinding wheel during the operation.

### **!WARNING**

Eye and face injuries and respiratory problems can occur while operating this tool. Wear personal protective equipment to reduce your risk from these hazards.



### **!WARNING**

Keep hair, clothing, and jewelry away from moving parts at all times. Entanglement can result in death, amputation, or severe crushing injuries!

#### Tool Needed

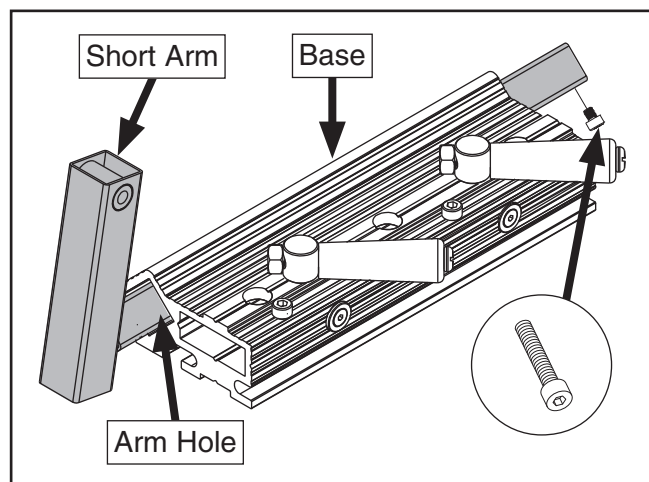
Hex Wrench 3mm..... 1

#### Qty



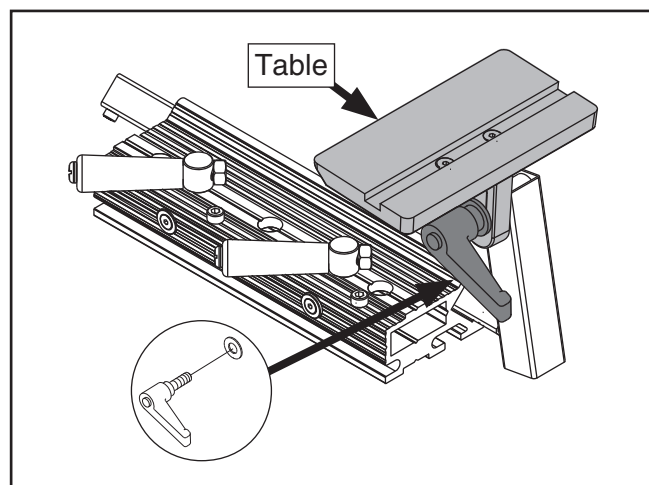
### To sharpen using short arm:

1. DISCONNECT GRINDER FROM POWER!
2. Insert short arm into desired base arm hole, then install cap screw from short arm during assembly to secure (see **Figure 11**).



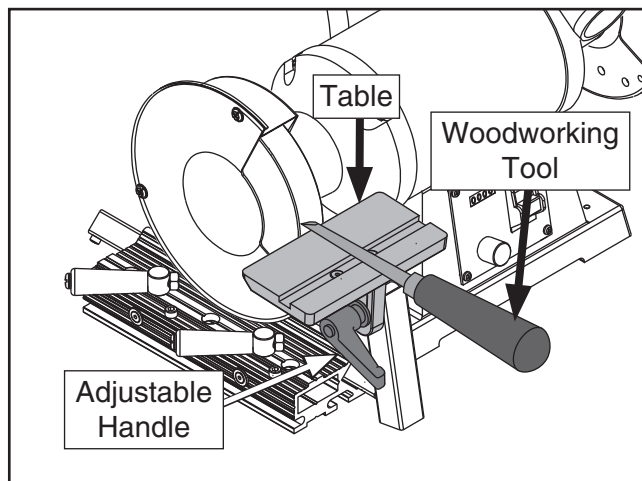
**Figure 11.** Example of short arm inserted into base.

3. Install table on short arm with  $\frac{5}{16}$ "-18 x  $1\frac{1}{2}$ " adjustable handle and  $\frac{5}{16}$ " flat washer (see **Figure 12**).



**Figure 12.** Example of table installed on short arm.

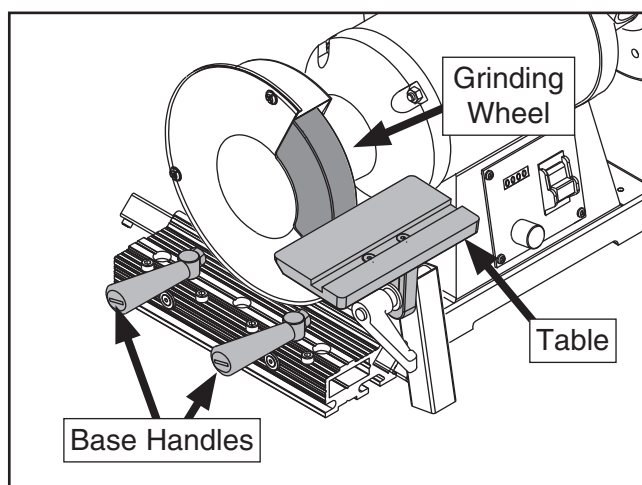
4. Place woodworking tool shaft against table and grinding wheel (see **Figure 13**).
5. Loosen adjustable handle and adjust table until entire bevel of tool contacts grinding wheel, then secure table by tightening adjustable handle (see **Figure 13**).



**Figure 13.** Example of table adjusted so woodworking tool bevel contacts grinding wheel.

6. Adjust short arm until there is less than  $\frac{1}{16}$ " of clearance between table and grinding wheel, then secure position by pulling base handles forward (see **Figure 14**).

**Note:** Table angle and height may need to be readjusted after table clearance is adjusted.



**Figure 14.** Short arm adjusted so there is less than  $\frac{1}{16}$ " clearance between table and grinding wheel.

7. Tilt tool away from grinding wheel, connect grinder to power, and turn machine **ON**.
8. Use firm grip to return tool to surface of grinding wheel to perform grinding operation.

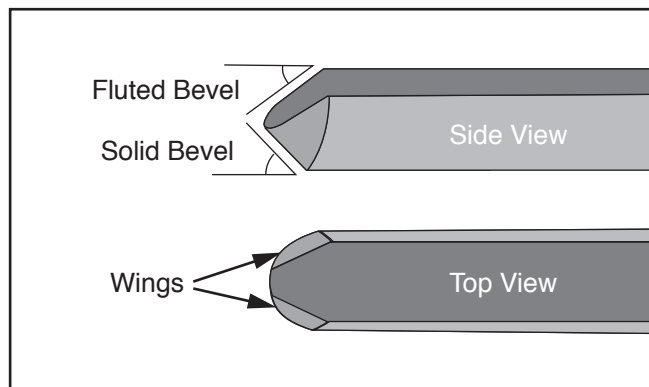
**Note:** See **Sharpening Gouges** and **Sharpening Chisels** on **Page 6** for more information on tool sharpening techniques.





## Sharpening Gouges

To sharpen a gouge, pivot or rotate the tool against the grinding wheel to follow its curves to each outer corner. A gouge typically has a solid bevel on the bottom, a fluted bevel on the top, and wings extending back towards the handle (see **Figure 15**).



**Figure 15.** Typical gouge components.

Bear in mind that changing the angles of any of these facets, or rolling a gouge past one of its corners, will have an effect on the overall profile or "grind" of the gouge (see the chart in **Figure 16** for some typical gouge grinds).

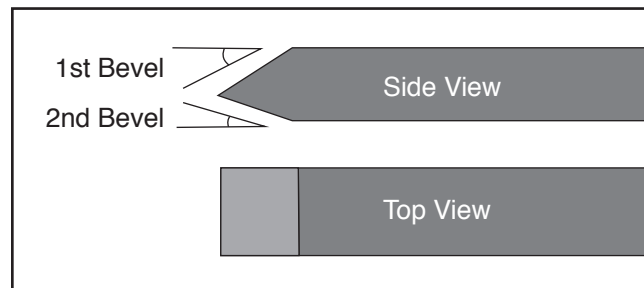
	Gouge Profile
Traditional	45°
40/40	40° 40°
Fingernail	50°
Irish, Swept Back, Ellsworth	55°
Micro-Bevel	65-70°

**Figure 16.** Typical gouge grinds.

We recommend researching these different gouge grinds further to determine which will work best for your project and for detailed instructions on how to sharpen the various edges and angles.

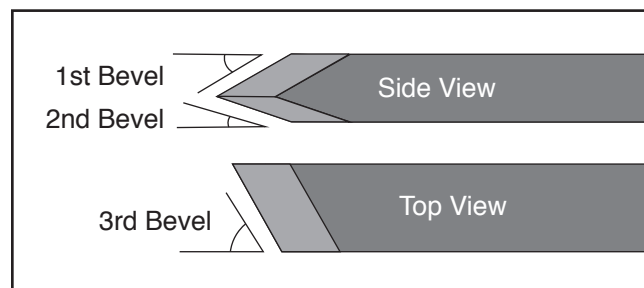
## Sharpening Chisels

For the straight edges of a chisel, move it from side to side across the grinding wheel to sharpen the first bevel, then turn the tool over and grind the opposite side for the second bevel (see **Figure 17**).



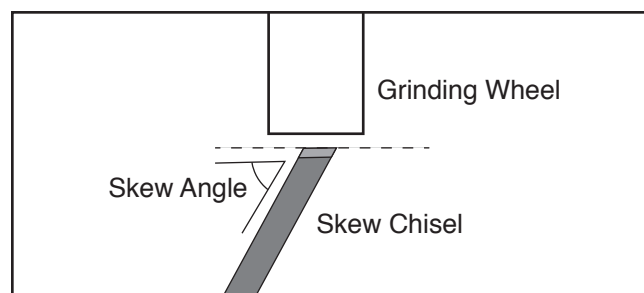
**Figure 17.** Typical chisel components.

These two bevels will be determined by the tool's angle in relation to the surface of the grinding wheel. However, a skew chisel has an additional bevel to keep in mind, as shown in **Figure 18**.



**Figure 18.** Typical skew chisel components.

This third bevel prevents you from feeding a tool into the grinding wheel straight-on, as viewed from above (see **Figure 19**), so be sure to consider all three bevels, and the best way to support them, before feeding your tool.



**Figure 19.** Skew chisel as viewed from above.



# Accessories

## **! WARNING**

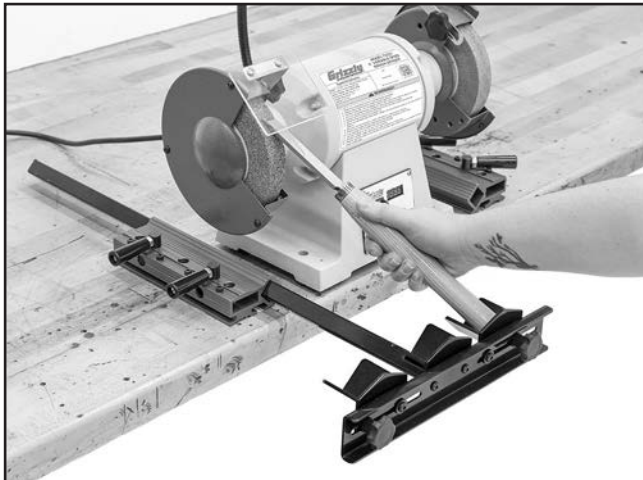
Installing unapproved accessories may cause machine to malfunction, resulting in serious personal injury or machine damage. To reduce this risk, only install accessories recommended for this machine by Grizzly.

## **NOTICE**

Refer to our website or latest catalog for additional recommended accessories.

### **T32733—Skew Grinding Attachment**

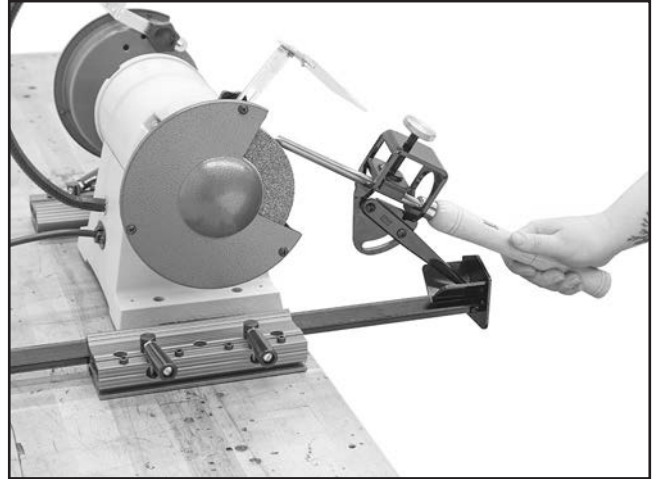
The T32733 Skew Grinding Attachment securely positions your skews in the V-holders at offset angles for precision sharpening. The left and right V-holders are adjustable to maintain bevels at exact skew angles.



**Figure 20.** Model T32733 Skew Grinding Attachment for T32732.

### **T32734—Gouge Grinding Attachment**

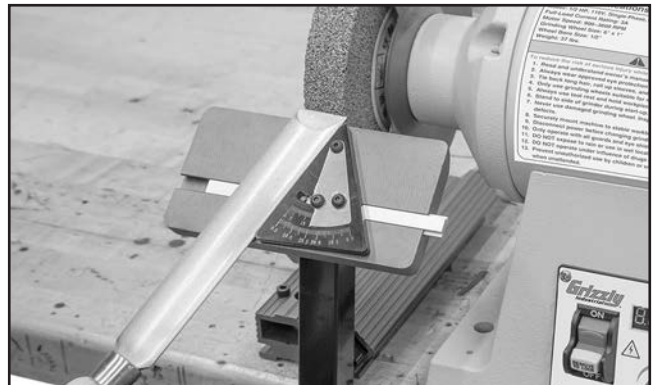
The T32734 Gouge Grinding Attachment secures your spindle gouges, bowl gouges, and roughing gouges at angles up to 40° for repeatable shaping. The brass knob locks in your tool and doubles as a thumb rest while rounding gouges. The jig holds gouges up to 1<sup>9</sup>/<sub>16</sub>" wide with shafts between 3<sup>3</sup>/<sub>16</sub>"–1<sup>3</sup>/<sub>8</sub>". Quickly grind fingernail profiles, side grinds, and simple bevels.



**Figure 21.** Model T32734 Gouge Grinding Attachment for T32732.

### **T32735—Angle Gauge**

The T32735 Angle Gauge consistently produces sharp, repeatable, and exact angles on wood-working tools. The gauge slides into the table of the T32732 Bench Grinder Sharpening System and adjusts between 0°–24° left or right. Great for sharpening skews, scrapers, cutters, and other tools needing a specific angled edge.

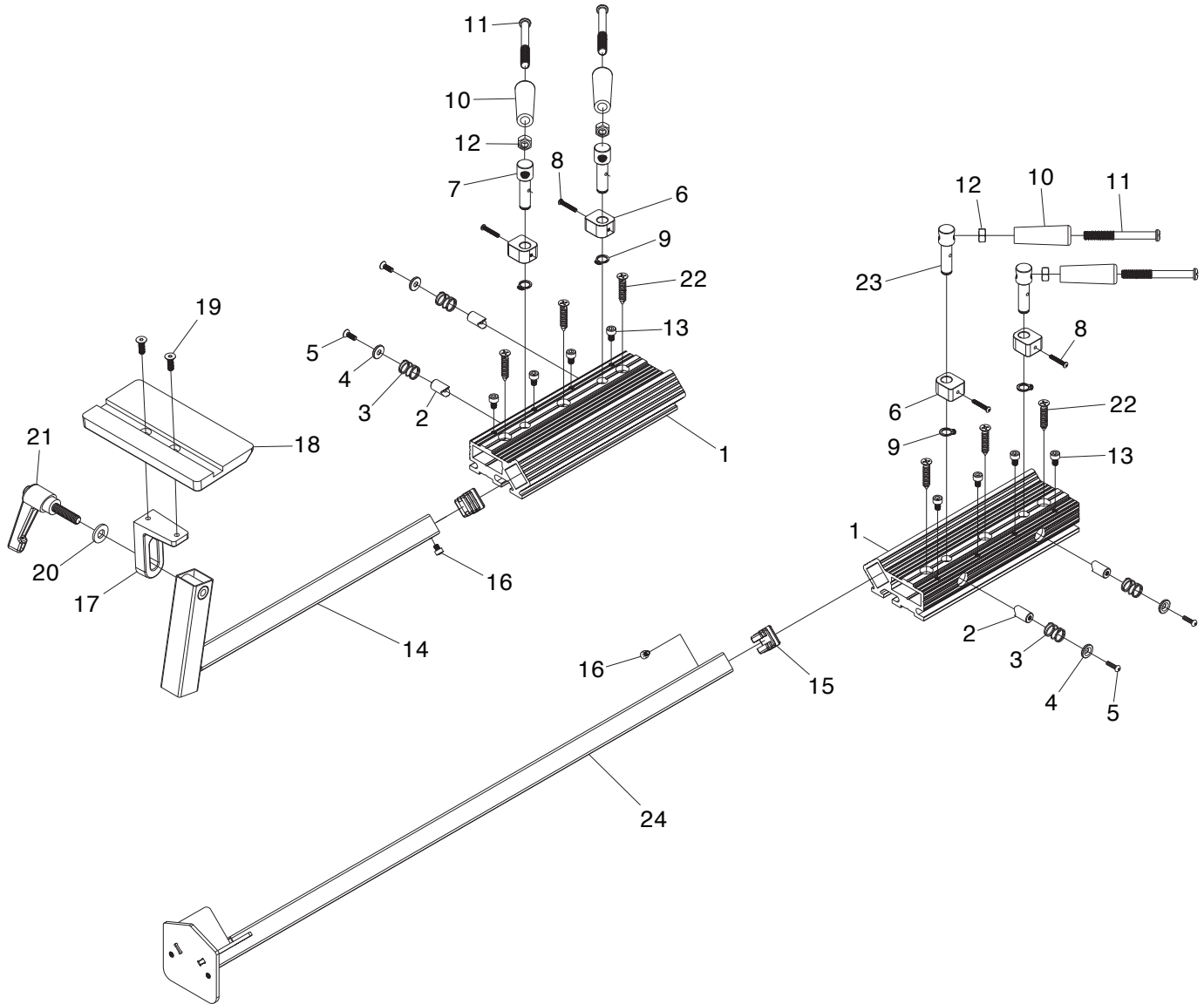


**Figure 22.** Model T32735 Angle Guide for T32732.

**order online at [www.grizzly.com](http://www.grizzly.com) or call 1-800-523-4777**



# T32732 Parts Breakdown & List



REF	PART #	DESCRIPTION
1	PT32732001	BASE 41 X 80 X 205
2	PT32732002	STOP ROD 10 X 17.7
3	PT32732003	COMPRESSION SPRING 1.2 X 13.4 X 16.5
4	PT32732004	CONICAL FLAT WASHER 8.5 X 13.5 X 2MM
5	PT32732005	BUTTON HD CAP SCR M4-.7 X 12
6	PT32732006	HANDLE MOUNTING BLOCK
7	PT32732007	HANDLE ROD 15 X 50 (LH)
8	PT32732008	BUTTON HD CAP SCR M3-.5 X 20
9	PT32732009	EXT RETAINING RING 10MM
10	PT32732010	HOLLOW HANDLE 3/4 X 2, 5/16
11	PT32732011	SHOULDER SCREW 5/16-18 X 1-1/8, 1-9/16
12	PT32732012	HEX NUT 5/16-18

REF	PART #	DESCRIPTION
13	PT32732013	CAP SCREW M5-.8 X 8
14	PT32732014	SHORT ARM 307MM
15	PT32732015	ARM CAP 20 X 20
16	PT32732016	CAP SCREW M4-.7 X 5
17	PT32732017	TABLE MOUNTING BRACKET
18	PT32732018	TABLE 3" X 6" X 1/2"
19	PT32732019	FLAT HD CAP SCR M5-.8 X 14
20	PT32732020	FLAT WASHER 5/16
21	PT32732021	ADJ HANDLE 5/16-18 X 1-1/2, 2-1/2L
22	PT32732022	WOOD SCREW 1/4 X 1-1/4
23	PT32732023	HANDLE ROD 15 X 50 (RH)
24	PT32732024	LONG ARM 700MM

**Please Note:** We do our best to stock replacement parts whenever possible, but we cannot guarantee that all parts shown here are available for purchase. Call (800) 523-4777 or visit our online parts store at [www.grizzly.com](http://www.grizzly.com) to check for availability.

