

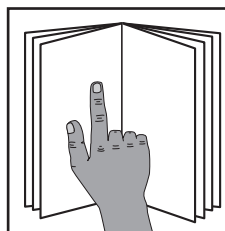


For questions or help with this product contact Tech Support at (570) 546-9663 or techsupport@grizzly.com

MODEL T32794 UNIVERSAL SHARPENING JIG FOR T32720 WET GRINDER INSTRUCTIONS

Introduction

The Model T32794 Universal Sharpening Jig provides support for tool sharpening on the Model T32720 10" Wet Grinder.



! WARNING

To reduce your risk of serious injury, read this entire manual **BEFORE** using machine.



Figure 1. Example of Model T32794 in use.

Inventory

Description	Qty
A. Jig.....	1
B. Knob Bolts M6-1 x 22.....	2

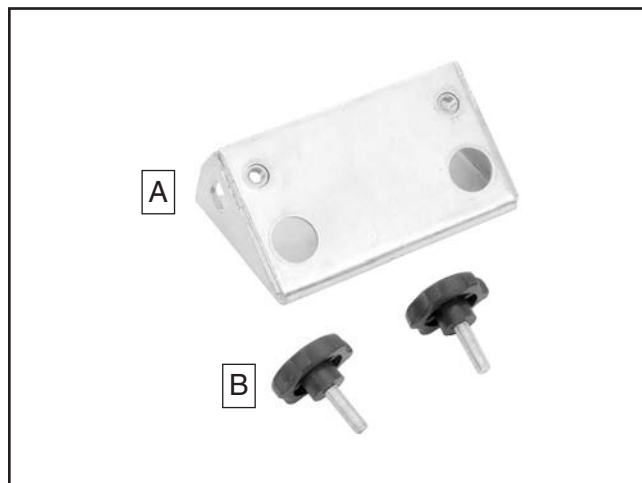


Figure 2. Inventory.

NOTICE

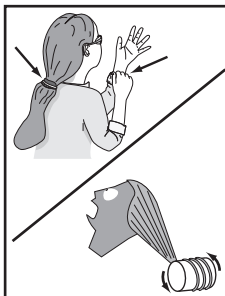
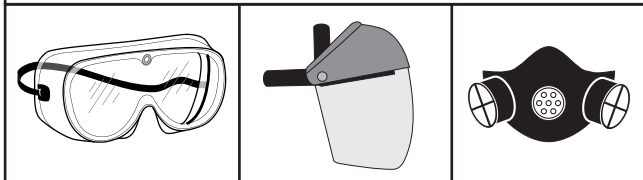
If you cannot find an item on this list, carefully check around/inside the machine and packaging materials. Often, these items get lost in packaging materials while unpacking or they are pre-installed at the factory.

Using Jig

Attach the jig to the tool rest on your Model T32720 10" Wet Grinder to sharpen chisels and other tools.

WARNING

Eye and face injuries and respiratory problems can occur while operating this tool. Wear personal protective equipment to reduce your risk from these hazards.



WARNING

Keep hair, clothing, and jewelry away from moving parts at all times. Entanglement can result in death, amputation, or severe crushing injuries!

To use jig:

1. DISCONNECT GRINDER FROM POWER!
2. Install tool rest (refer to **Grinding Wheel Rotation** on **Page 23** of Model T32720 owner's manual to determine best way to install tool rest for your operation).

3. Slide jig onto tool rest and install (2) M6-1 x 22 knob bolts (see **Figure 3**).

Note: Leave knob bolts loose enough to move jig until directed to tighten in **Step 5**.

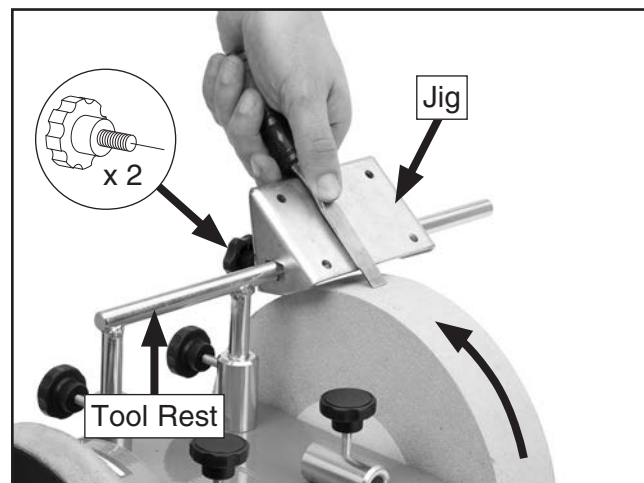


Figure 3. Example of grinding chisel with jig.

4. Adjust tool rest closer to or further from grinding wheel and tilt jig until desired grinding angle is achieved.
5. Tighten knob bolts to secure jig position on tool rest.
6. Connect grinder to power, and turn machine **ON**.
7. Rest workpiece against jig (see **Figure 3**), then use firm grip to guide it against surface of grinding wheel to perform operation. Move workpiece back and forth across surface of wheel while grinding to prevent excessive or uneven wheel wear.

