

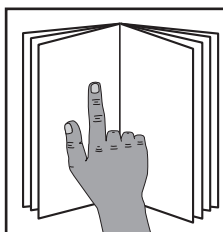


MODEL T32796/T32797 KNIFE SHARPENING JIGS FOR T32720 WET GRINDER INSTRUCTIONS

For questions or help with this product contact Tech Support at (570) 546-9663 or techsupport@grizzly.com

Introduction

The Model T32796/T32797 Knife Sharpening Jigs are fixtures designed to work with the Model T32720 10" Wet Grinder. The Model T32796 is for blades longer than 4" while the Model T32797 supports blades that are shorter than 4".



! WARNING

To reduce your risk of serious injury, read this entire manual BEFORE using machine.



Figure 1. Example of Model T32796 in use.

Inventory

Description	Qty
A. Jig (T32797 Shown)	1
B. Knob Bolt M6-1 x 20.....	1

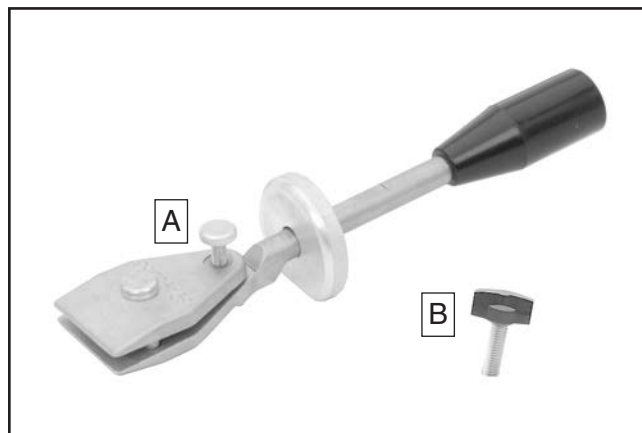


Figure 2. Inventory.

NOTICE

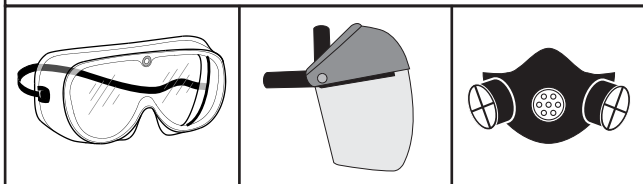
If you cannot find an item on this list, carefully check around/inside the machine and packaging materials. Often, these items get lost in packaging materials while unpacking or they are pre-installed at the factory.

Using Jig

Rest the tool jig against the tool rest on the Model T32720 10" Wet Grinder to grind or strop knives with the direction of wheel rotation. The Model T32796 is for blades longer than 4" while the Model T32797 supports blades that are shorter than 4".

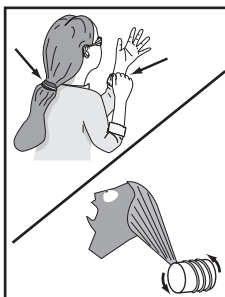
!WARNING

Eye and face injuries and respiratory problems can occur while operating this tool. Wear personal protective equipment to reduce your risk from these hazards.



!WARNING

Keep hair, clothing, and jewelry away from moving parts at all times. Entanglement can result in death, amputation, or severe crushing injuries!



To use jig:

1. Rotate adjusting ring on jig shaft so flat portions shown in **Figure 3** are aligned.
2. Tighten adjusting ring knob until adjusting ring is secure on jig shaft (see **Figure 3**).

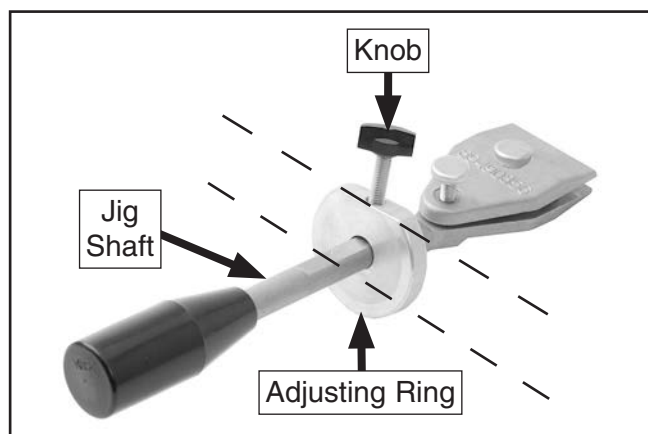


Figure 3. Adjusting ring secured correctly on jig shaft (T32797 shown).

3. DISCONNECT GRINDER FROM POWER!
4. Install tool rest in horizontal position over grinding or stropping wheel as required by your operation.
5. Loosen clamp knob enough to allow knife blade to slide in (see **Figure 4**).
6. Loosen lock knob enough so it does not extend through clamp plate (see **Figure 4**).

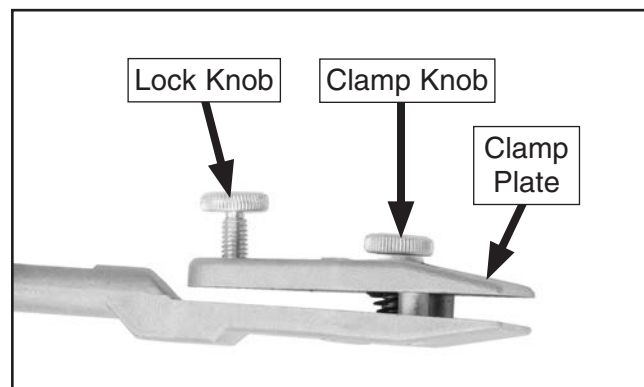


Figure 4. Clamp components.

7. Insert knife blade into clamp, as shown in **Figure 5**, and tighten clamp knob to secure.
8. Tighten lock knob to secure (see **Figure 5**).

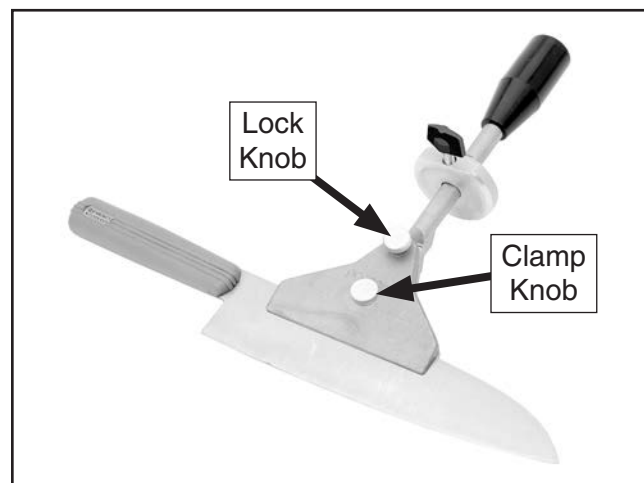


Figure 5. Example of knife blade secured in clamp (T32796 shown).



9. Rest clamp against tool rest (see **Figure 6**).

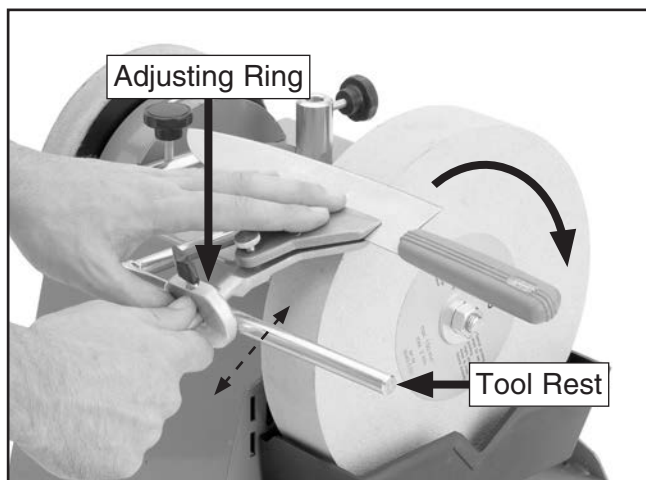


Figure 6. Example of grinding knife supported by jig (T32796 shown).

10. Adjust tool rest closer to or further from grinding or stropping wheel until approximate desired grinding/stropping angle is achieved.
11. Adjust position of adjusting ring to fine-tune grinding/stropping angle (see **Figure 6**).
12. Tilt jig and knife away from grinding wheel, connect grinder to power, and turn machine **ON**.
13. Use firm grip to return knife blade to surface of grinding or stropping wheel to grind or strop knife with the direction of wheel rotation. Use smooth stroking motion and even pressure with side of blade flat against wheel. Pivot jig against tool rest as needed to follow contour of blade.



grizzly.com®

TOOL WEBSITE

Buy Direct and Save with Grizzly® – Trusted, Proven and a Great Value!
~Since 1983~

***Visit Our Website Today For
Current Specials!***

**ORDER
24 HOURS A DAY!
1-800-523-4777**

