

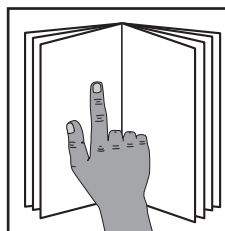


For questions or help with this product contact Tech Support at (570) 546-9663 or techsupport@grizzly.com

MODEL T32798 AXE SHARPENING JIG FOR T32720 WET GRINDER INSTRUCTIONS

Introduction

The Model T32798 Axe Sharpening Jig is a fixture for sharpening axes with blades up to 6½" long on the Model T32720 10" Wet Grinder.

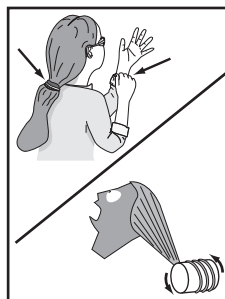
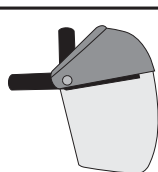
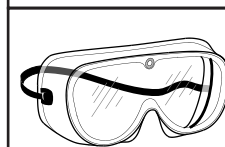


! WARNING

To reduce your risk of serious injury, read this entire manual **BEFORE** using machine.

! WARNING

Eye and face injuries and respiratory problems can occur while operating this tool. Wear personal protective equipment to reduce your risk from these hazards.



! WARNING

Keep hair, clothing, and jewelry away from moving parts at all times. Entanglement can result in death, amputation, or severe crushing injuries!

Using Jig

1. DISCONNECT GRINDER FROM POWER!
2. Install tool rest in vertical position over grinding wheel so grinding will occur against wheel rotation.
3. Slide jig onto tool rest and insert axe into jig, as shown in **Figure 1**.

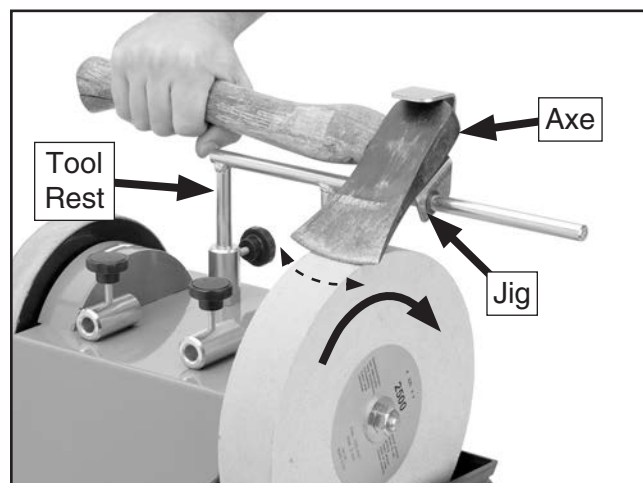


Figure 1. Example of Model T32798 in use.

4. Adjust tool rest closer to or further from grinding wheel until desired grinding angle is achieved.
5. Tilt axe away from grinding wheel, connect grinder to power, and turn machine **ON**.
6. Use firm grip to return axe to surface of grinding wheel to sharpen axe against wheel rotation. Rock axe back and forth while grinding to sharpen entire cutting edge of axe (see **Figure 1**).