



For questions or help with this product contact Tech Support at (570) 546-9663 or techsupport@grizzly.com

## MODEL T32838 BANDSAW SLED INSTRUCTIONS

### Introduction

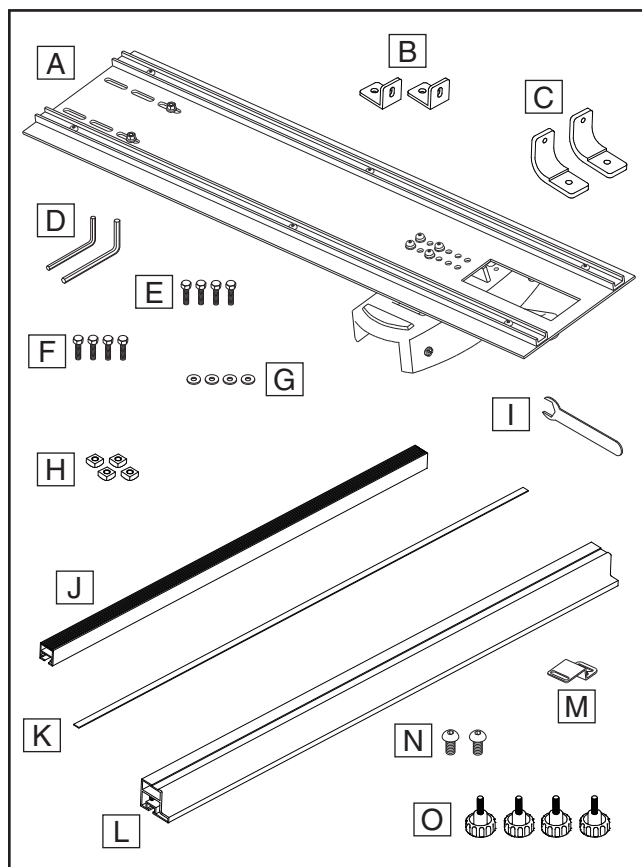
The Model T32838 Bandsaw Sled (see **Figure 1**) fits 17" vertical wood-cutting bandsaws with tables between 12<sup>7</sup>/<sub>8</sub>"–18<sup>1</sup>/<sub>2</sub>" long, and allows you to process logs when used with one of the accessories listed on **Page 5**.



**Figure 1.** Example of Model T32838 installed on bandsaw.

### Inventory

Description (Figure 2)	Qty
A. Sled Assembly.....	1
B. Rear Rail Mounting Brackets.....	2
C. Front Rail Mounting Brackets.....	2
D. Hex Wrenches 3, 4mm.....	1 Ea.
E. Hex Bolts M6-1 x 16.....	4
F. Hex Bolts 1/4"-20 x 5/8".....	4
G. Flat Washers 1/4".....	4
H. Square Nuts 5/16"-18.....	4
I. Open-End Wrench 10mm.....	1
J. Rear Rail.....	1
K. Scale.....	1
L. Front Rail.....	1
M. Pointer.....	1
N. Button Head Cap Screws M5-.8 x 10.....	2
O. Knob Bolts 5/16"-18 x 5/8".....	4



**Figure 2.** T32838 inventory.

### NOTICE

If you cannot find item on list, check around/inside packaging materials. Often, items get lost in packaging while unpacking or they are pre-installed at factory.

## Assembly

The existing rails on your bandsaw must be removed to install the Model T32838.



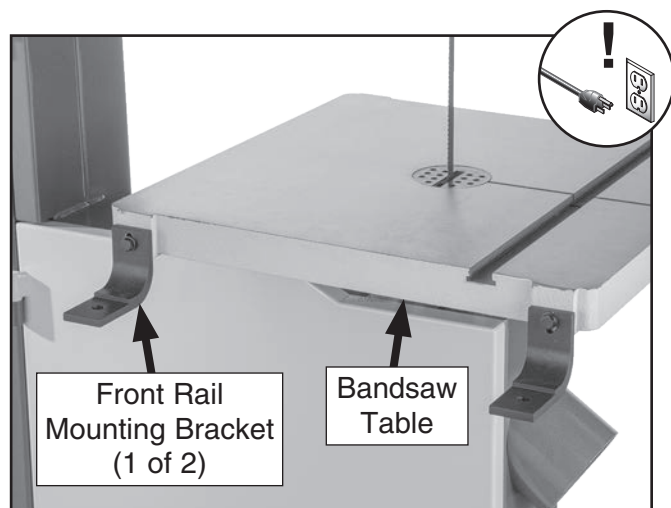
### Items Needed

	Qty
Vertical Wood-Cutting Bandsaw .....	1
Tools to Remove Bandsaw Rails.....	As Needed
Safety Glasses (For Each Person) .....	1 Pr.
Wrench or Socket 8mm.....	1

### To assemble bandsaw sled:

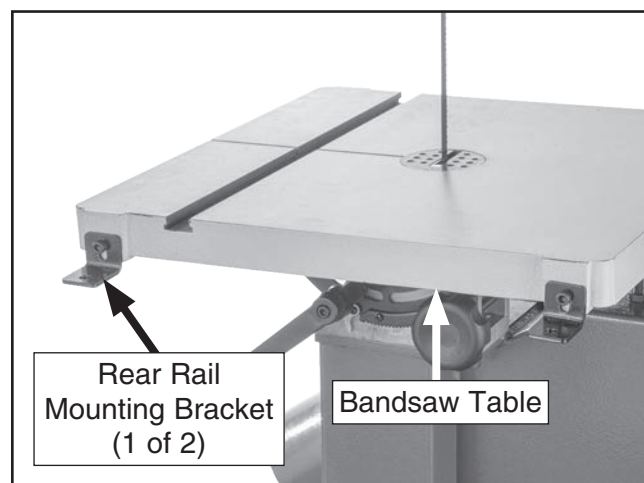
1. DISCONNECT BANDSAW FROM POWER!
2. Remove existing rails on your bandsaw.
3. Install (2) front rail mounting brackets to front of bandsaw table (see **Figure 3**) using hardware removed in **Step 2**. Only finger-tighten for now.

**Note:** T32838 comes with (4) M6-1 x 16 hex bolts, (4) 1/4"-20 x 5/8" hex bolts, and (4) 1/4" flat washers. These can be used instead of hardware from **Step 2** if they fit your machine.



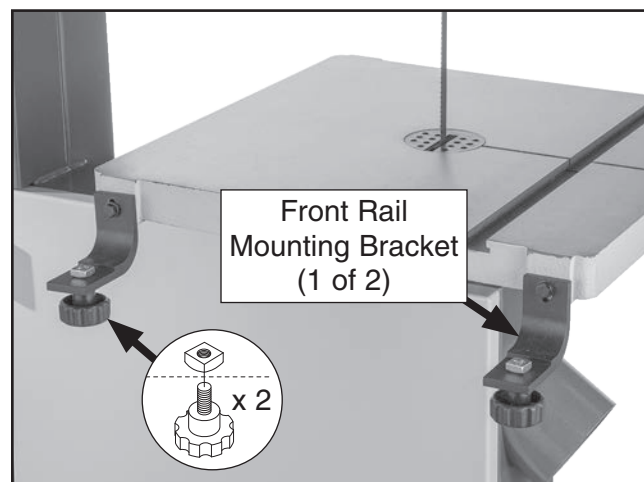
**Figure 3.** Example of front rail mounting brackets installed on bandsaw table.

4. Install (2) rear rail mounting brackets to rear of bandsaw table (see **Figure 4**) using hardware removed in **Step 2** (or hardware included with T32838). Only finger-tighten for now.



**Figure 4.** Example of rear rail mounting brackets installed on bandsaw table.

5. Loosely install (2) 5/16"-18 x 5/8" knob bolts and 5/16"-18 square nuts on front rail mounting brackets, as shown in **Figure 5**.

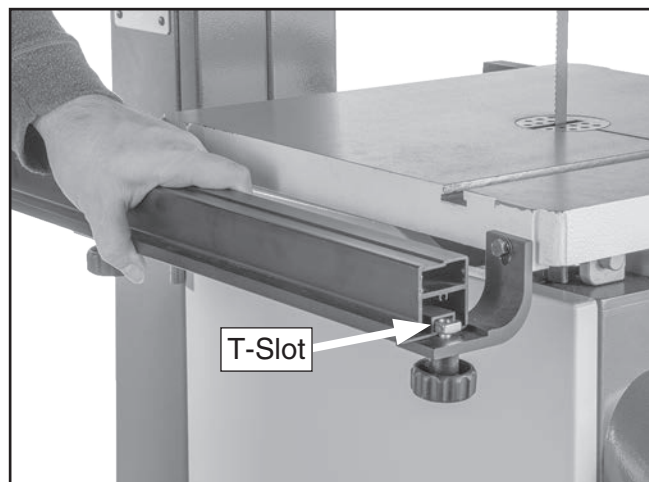


**Figure 5.** Knob bolts and square nuts installed on front rail mounting brackets.



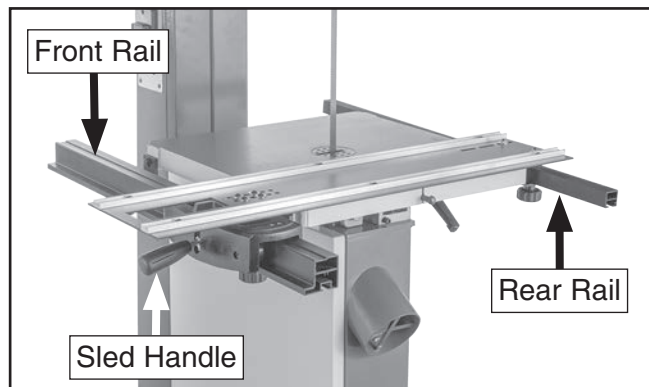
- Slide square nuts into T-slot on bottom of front rail, as shown in **Figure 6**, then tighten knobs to secure rail position.

**Note:** To allow for longer workpieces, adjust rail as far right as possible where it can still be secured by left knob.



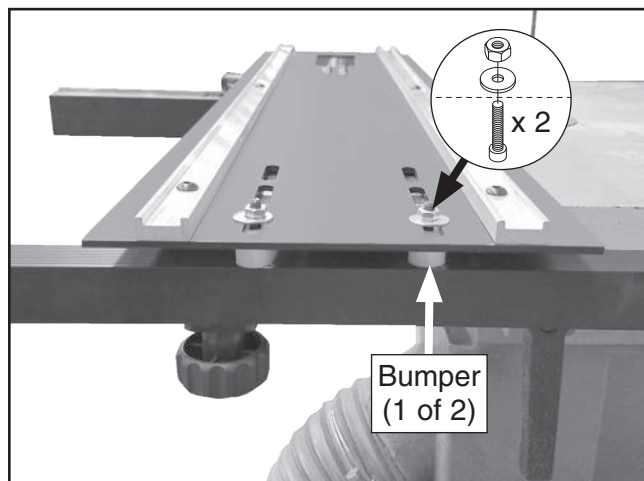
**Figure 6.** Installing front rail.

- Repeat **Steps 5–6** with rear rail, aligning rear rail edges to front rail edges.
- Lift sled handle and place sled assembly on rails and bandsaw table (see **Figure 7**).



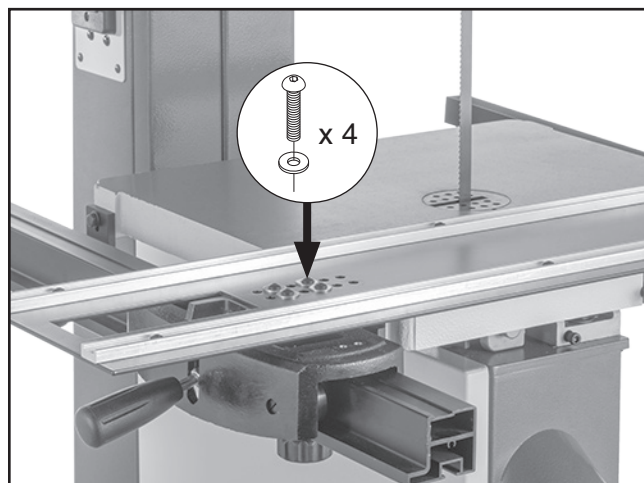
**Figure 7.** Sled placed on front and rear rails.

- Loosen or remove (2) cap screws, fender washers, and hex nuts shown in **Figure 8** to adjust or re-install bumpers so they are directly above rear rail.



**Figure 8.** Location of bumper fasteners.

**Note:** If you cannot install bumpers directly above rear rail, you can also adjust placement of fasteners shown in **Figure 9** so sled better fits your bandsaw table.



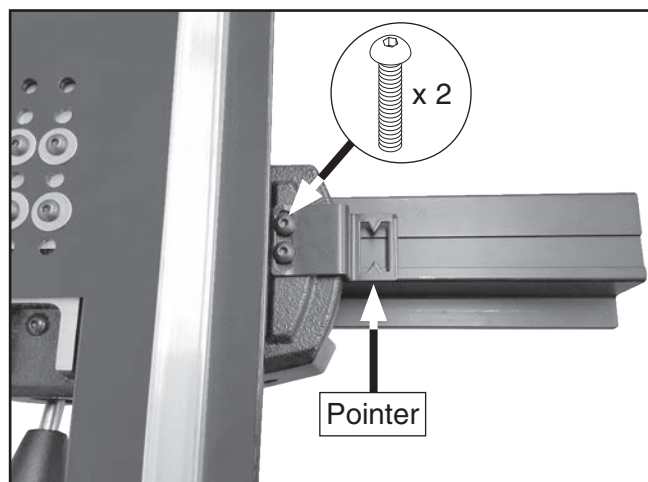
**Figure 9.** Location of sled frame position fasteners.

- Adjust rails up or down as needed so sled is slightly above table, then tighten fasteners from **Steps 3–4**. Bumpers should contact rear rail and sled should slide smoothly across rails and table.

**Note:** You may need to position rear rail out of the way in order to access fasteners.

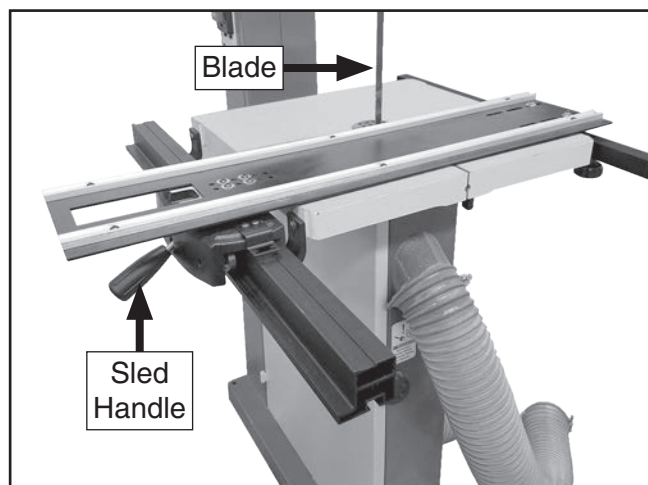


11. Attach pointer to sled with (2) M5-.8 x 10 button head cap screws (see **Figure 10**).



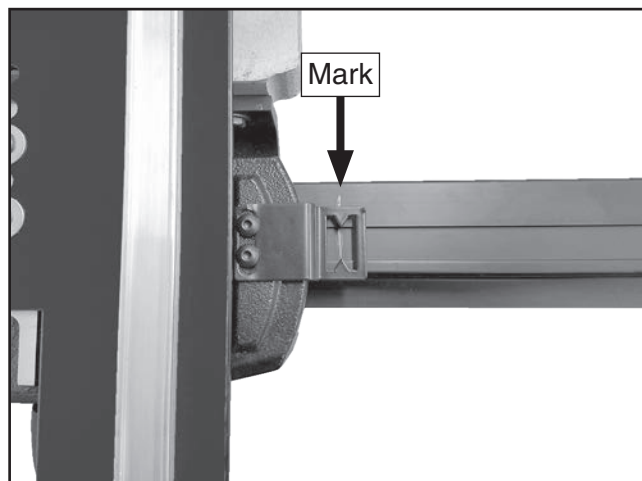
**Figure 10.** Pointer attached to sled.

12. Adjust sled on rails until edge of sled is flush against bandsaw blade (see **Figure 11**), then move sled handle down to lock position on rails.



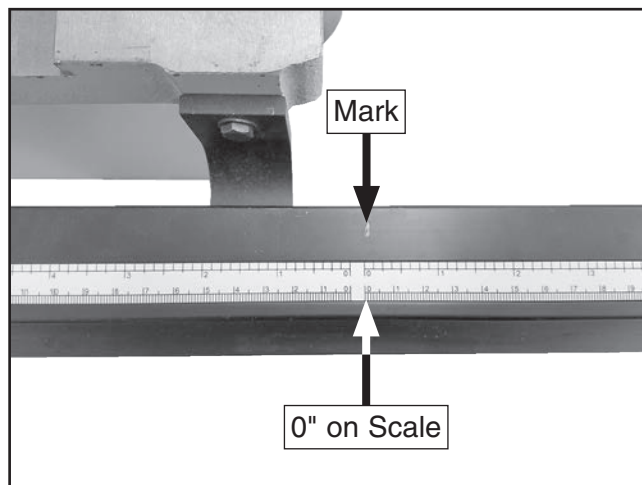
**Figure 11.** Sled edge flush and locked in position against blade.

13. Mark location of pointer on front rail (see **Figure 12**).



**Figure 12.** Pointer location marked on rail where sled contacts blade.

14. Lift sled handle to unlock position, then remove bandsaw sled from rails.
15. Remove sticker-back from scale and adhere scale to front rail, aligning 0" on scale with mark from **Step 13** (see **Figure 13**).



**Figure 13.** Scale attached to front rail.

**Note:** If you adjust rail position, scale will no longer be accurate. If you think you may adjust rails, affix scale with tape for now.

16. Lift sled handle and install bandsaw sled on rails.
17. Refer to **Model T32839**, **Model T32840**, or **Model T32841** instructions to install accessories for crosscut, miter, or milling operations.





# Accessories

## **! WARNING**

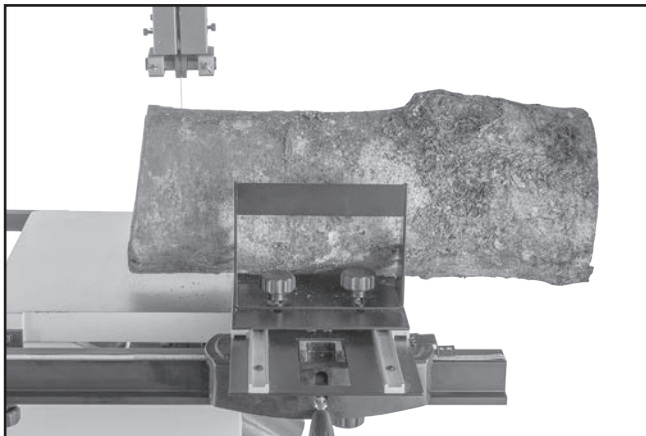
Installing unapproved accessories may cause machine to malfunction, resulting in serious personal injury or machine damage. To reduce this risk, only install accessories recommended for this machine by Grizzly.

## **NOTICE**

Refer to our website or latest catalog for additional recommended accessories.

### **T32839—Sliding Log Crosscut Jig**

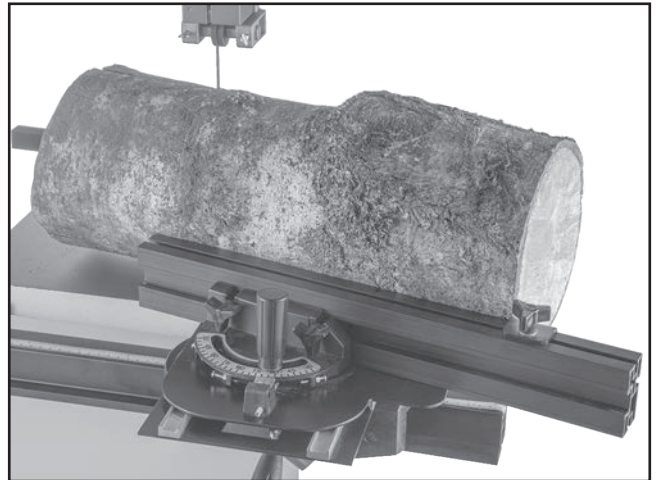
The Model T32839 Sliding Log Crosscut Jig attaches to the T32838 Bandsaw Sled to perform crosscut operations on vertical wood-cutting bandsaws.



**Figure 14.** T32839 Sliding Log Crosscut Jig for T32838.

### **T32840—Sliding Log Miter Table**

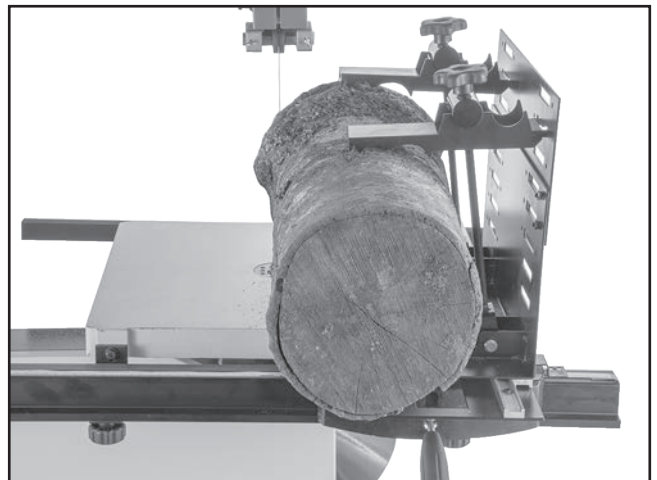
The T32840 Sliding Log Miter Table attaches to the T32838 Bandsaw Sled to perform miter cut operations on vertical wood-cutting bandsaws.



**Figure 15.** T32840 Sliding Log Miter Table for T32838.

### **T32841—Sliding Log Milling Sled**

The T32841 Sliding Log Milling Sled attaches to the T32838 Bandsaw Sled to perform milling operations on vertical wood-cutting bandsaws.

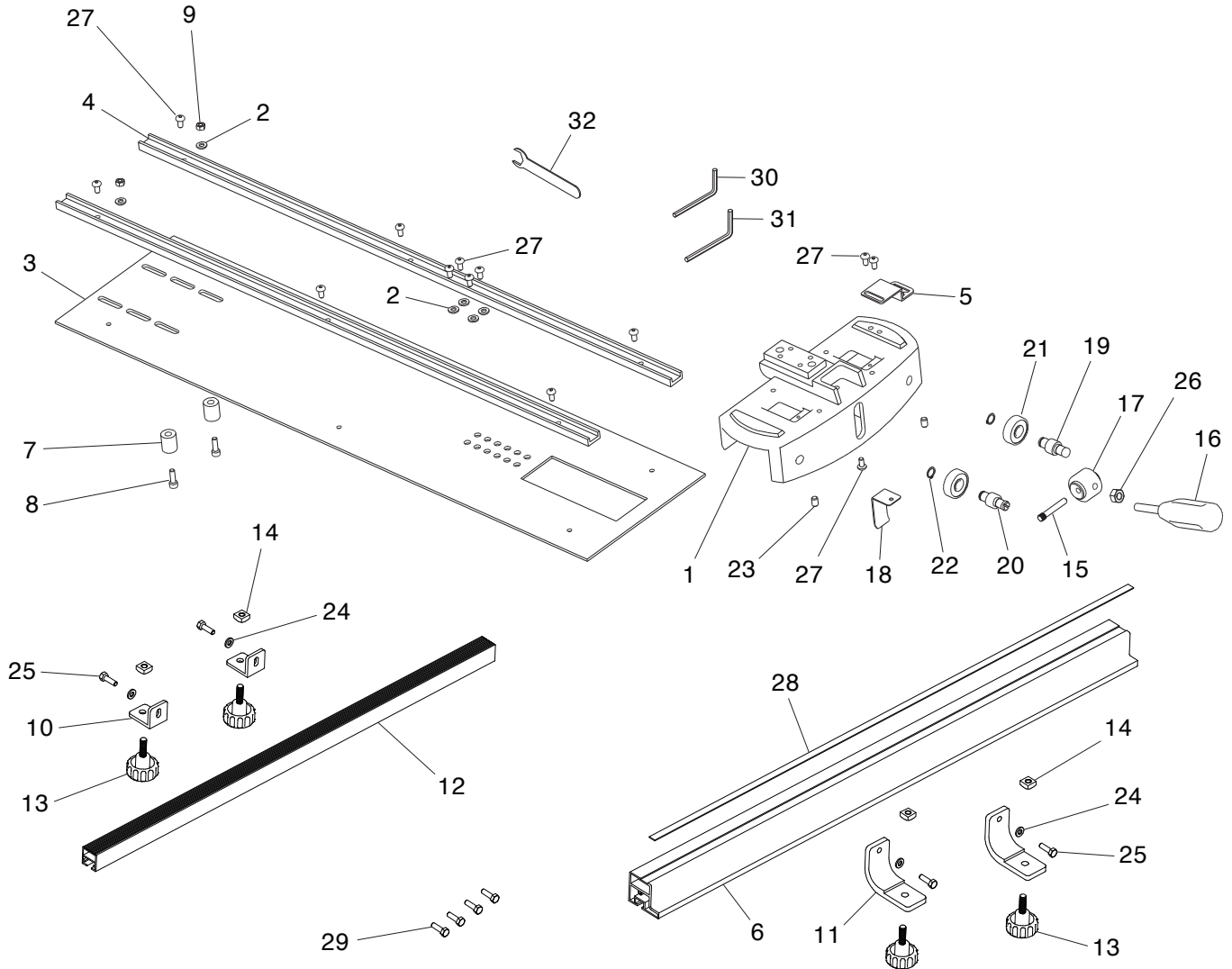


**Figure 16.** T32841 Sliding Log Milling Sled for T32838.

***order online at [www.grizzly.com](http://www.grizzly.com) or call 1-800-523-4777***



# T32838 Parts Breakdown & List



REF	PART #	DESCRIPTION
1	PT32838001	BASE
2	PT32838002	FLAT WASHER 5MM
3	PT32838003	TRACK GUIDE PLATE
4	PT32838004	TRACK
5	PT32838005	POINTER
6	PT32838006	FRONT RAIL
7	PT32838007	BUMPER
8	PT32838008	CAP SCREW M5-.8 X 16
9	PT32838009	HEX NUT M5-.8
10	PT32838010	REAR RAIL MOUNTING BRACKET
11	PT32838011	FRONT RAIL MOUNTING BRACKET
12	PT32838012	REAR RAIL
13	PT32838013	KNOB BOLT 5/16-18 X 5/8, 12-LOBE, D1-1/2
14	PT32838014	SQUARE NUT 5/16-18
15	PT32838015	HANDLE PIVOT PIN
16	PT32838016	FIXED HANDLE 29 X 77, M8-1.25 X 40

REF	PART #	DESCRIPTION
17	PT32838017	LOCKING CAM
18	PT32838018	PRESSURE PLATE
19	PT32838019	BEARING SHAFT (RIGHT)
20	PT32838020	BEARING SHAFT (LEFT)
21	PT32838021	BALL BEARING 6200ZZ
22	PT32838022	EXT RETAINING RING 10MM
23	PT32838023	SET SCREW 1/4-20 X 1/4
24	PT32838024	FLAT WASHER 1/4
25	PT32838025	HEX BOLT 1/4-20 X 5/8
26	PT32838026	HEX NUT M8-1.25
27	PT32838027	BUTTON HD CAP SCR M5-.8 X 10
28	PT32838028	SCALE
29	PT32838029	HEX BOLT M6-1 X 16
30	PT32838030	HEX WRENCH 3MM
31	PT32838031	HEX WRENCH 4MM
32	PT32838032	WRENCH 10MM OPEN-END

**Please Note:** We do our best to stock replacement parts whenever possible, but we cannot guarantee that all parts shown here are available for purchase. Call (800) 523-4777 or visit our online parts store at [www.grizzly.com](http://www.grizzly.com) to check for availability.



# WARRANTY & RETURNS

---

Grizzly Industrial, Inc. warrants every product it sells for a period of **1 year** to the original purchaser from the date of purchase. This warranty does not apply to defects due directly or indirectly to misuse, abuse, negligence, accidents, repairs or alterations or lack of maintenance. This is Grizzly's sole written warranty and any and all warranties that may be implied by law, including any merchantability or fitness, for any particular purpose, are hereby limited to the duration of this written warranty. We do not warrant or represent that the merchandise complies with the provisions of any law or acts unless the manufacturer so warrants. In no event shall Grizzly's liability under this warranty exceed the purchase price paid for the product and any legal actions brought against Grizzly shall be tried in the State of Washington, County of Whatcom.

We shall in no event be liable for death, injuries to persons or property or for incidental, contingent, special, or consequential damages arising from the use of our products.

The manufacturers reserve the right to change specifications at any time because they constantly strive to achieve better quality equipment. We make every effort to ensure that our products meet high quality and durability standards and we hope you never need to use this warranty.

In the event you need to use this warranty, contact us by mail or phone and give us all the details. We will then issue you a "Return Number," which must be clearly posted on the outside as well as the inside of the carton. We will not accept any item back without this number. Proof of purchase must accompany the merchandise.

Please feel free to write or call us if you have any questions about the machine or the manual.

Thank you again for your business and continued support. We hope to serve you again soon.

To take advantage of this warranty, you must register it at <https://www.grizzly.com/forms/warranty>, or you can scan the QR code below to be automatically directed to our warranty registration page. Enter all applicable information for the product.





Buy Direct and Save with Grizzly® – Trusted, Proven and a Great Value!  
~Since 1983~

*Visit Our Website Today For  
Current Specials!*

**ORDER  
24 HOURS A DAY!  
1-800-523-4777**

