



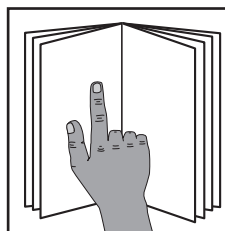
For questions or help with this product contact Tech Support at (570) 546-9663 or techsupport@grizzly.com

MODEL T32859 24" X 36" FOLDING WELDING TABLE INSTRUCTIONS

Introduction

The Model T32859 Folding Welding Table has a load capacity of 350 lbs. The table surface has 5/8" diameter holes spaced every 2" for welding operations.

The table collapses for storage when not in use.



! WARNING

To reduce your risk of serious injury, read this entire manual **BEFORE** using machine.

Specifications

Weight Capacity350 lbs.
Work Table Size24" x 36"
Work Table Thickness 9 Gauge
Work Table Working Height..... 31¹¹/₁₆"

Needed for Setup

The following items are needed, but not included, for the setup/assembly of the Model T32859.

Description

Qty

- Safety Glasses 1
- Cleaner/Degreaser As Needed
- Disposable Shop Rags..... As Needed
- Metal Protectant As Needed
- Cardboard As Needed
- Hex Wrench 10mm..... 1
- Wrench or Socket 16mm..... 1
- Additional Person 1

Inventory

Large Items (Figure 1)

Qty

- A. Table Assembly 1
B. Leg Assembly..... 1

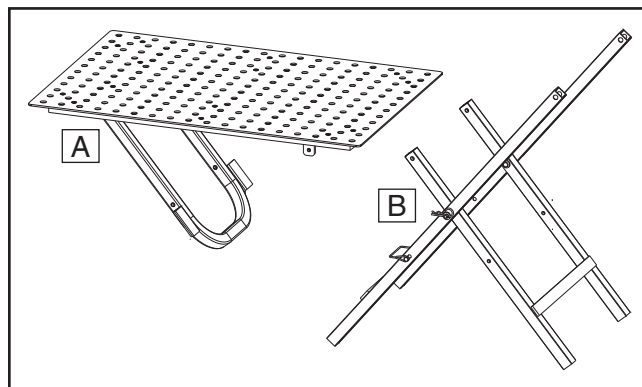


Figure 1. Large items inventory.

Fasteners (Figure 2)

Qty

- C. Hex Nuts M10-1.5 (Thin)..... 2
D. Shoulder Screws M10-1.5 x 18..... 2
E. Flat Washers 10mm 4
F. Shaft Sleeves 2
G. Hinge Pins 10 x 85mm 2
H. Cotter Pins 3.5 x 75mm..... 2

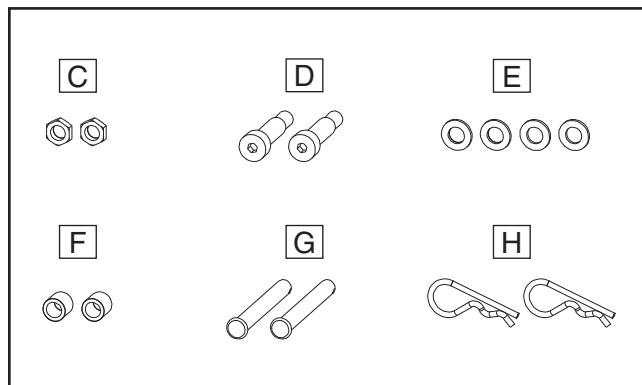


Figure 2. Fasteners.

Assembly

The Model T32859 requires assembly before use.



To assemble welding table:

1. Clean factory rust preventative off table with cleaner/degreaser, then coat all unpainted surfaces with quality metal protectant to prevent rust.
2. Place table assembly face down on cardboard on floor to protect it during assembly.
3. Attach long leg to table frame with (2) M10-1.5 x 18 shoulder screws and M10-1.5 hex nuts (see **Figure 3**).

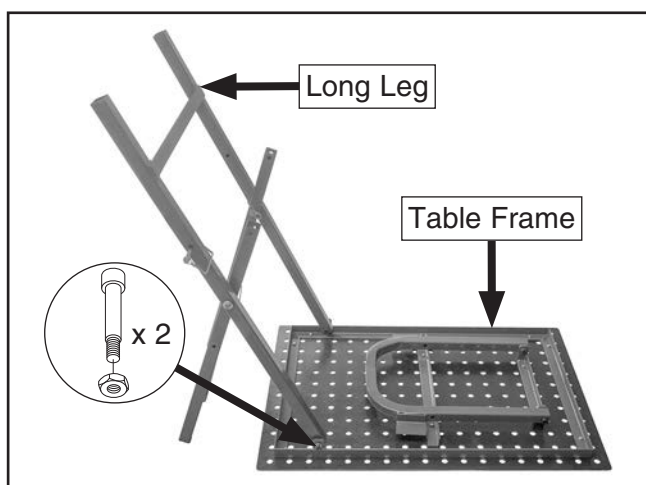


Figure 3. Long leg attached to table frame.

4. Attach one side of short leg to U-brace with 10 x 85mm hinge pin, (2) 10mm flat washers, and shaft sleeve (see **Figure 4**).

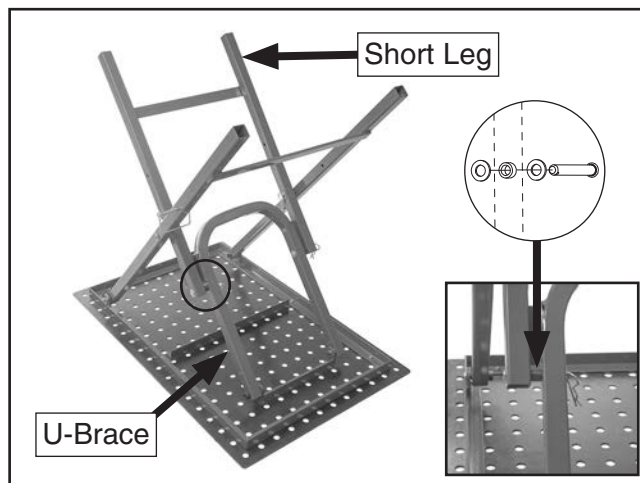


Figure 4. Short leg attached to U-brace.

5. Secure fasteners by inserting 3.5 x 75mm cotter pin through hinge pin hole (see **Figure 5**).

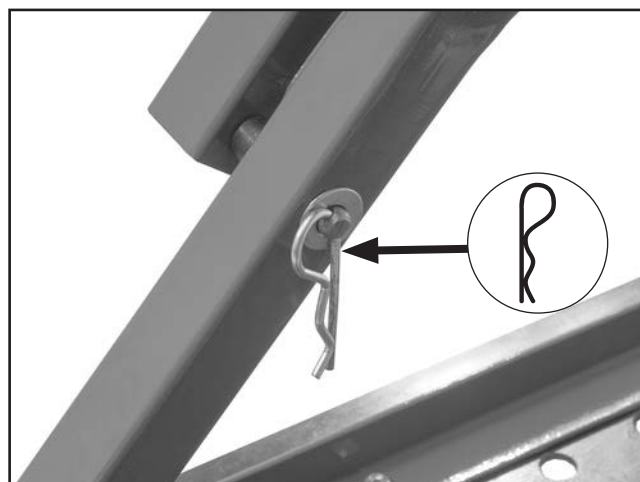


Figure 5. Cotter pin inserted through hinge pin.

6. Repeat **Steps 4–5** with other side of short leg.
7. Have one other person help you lift welding table and place on legs.



Safety & Correct Use

- Do not apply an unbalanced load.
- Keep unsupervised children away from the table.
- Do not stand or climb on the table.
- Do not use in wet or damp locations.
- Do not leave rags or other items that are damp with water, oil, paint, or solvents on the table.
- Set up the table in a well-ventilated area where there are no hazardous or combustible materials that could ignite during welding operations.
- While using an electric welder, the welder must be grounded to either the workpiece or the table before the welding operation. If grounding to the table, the workpiece must contact the table so the current may flow through the workpiece to the grounding clamp and close the welding circuit. Ensure there is insulation between the operator and the electric current (a dry rubber mat, rubber gloves, etc.).
- Lubricate the hinge pins holding the legs together and the shoulder screws attaching the legs to the frame with light machine oil if folding the table becomes difficult.

WARNING

DO NOT exceed table weight capacity of 350 lbs. Sudden change in dynamic load at maximum weight capacity could cause table to tip or collapse, resulting in serious personal injury or property damage.

Storage

1. Lift U-brace toward underside of table, as shown in **Figure 6**.

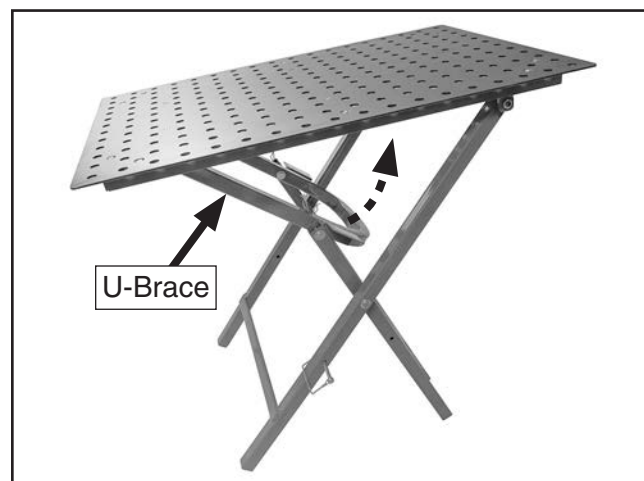


Figure 6. Lifting U-brace to fold table.

Note: You may need to adjust folding lock pin (see **Figure 7**) out of the way if pin prevents folding.

2. Lean top of table against wall or work table to secure short leg, and lock legs together with lock pin shown in **Figure 7**.

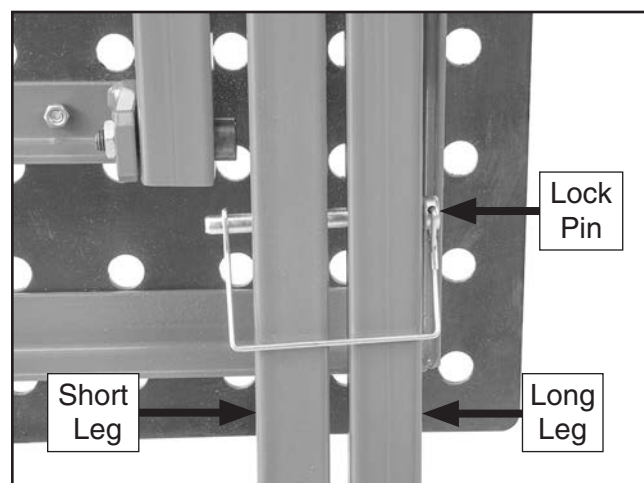
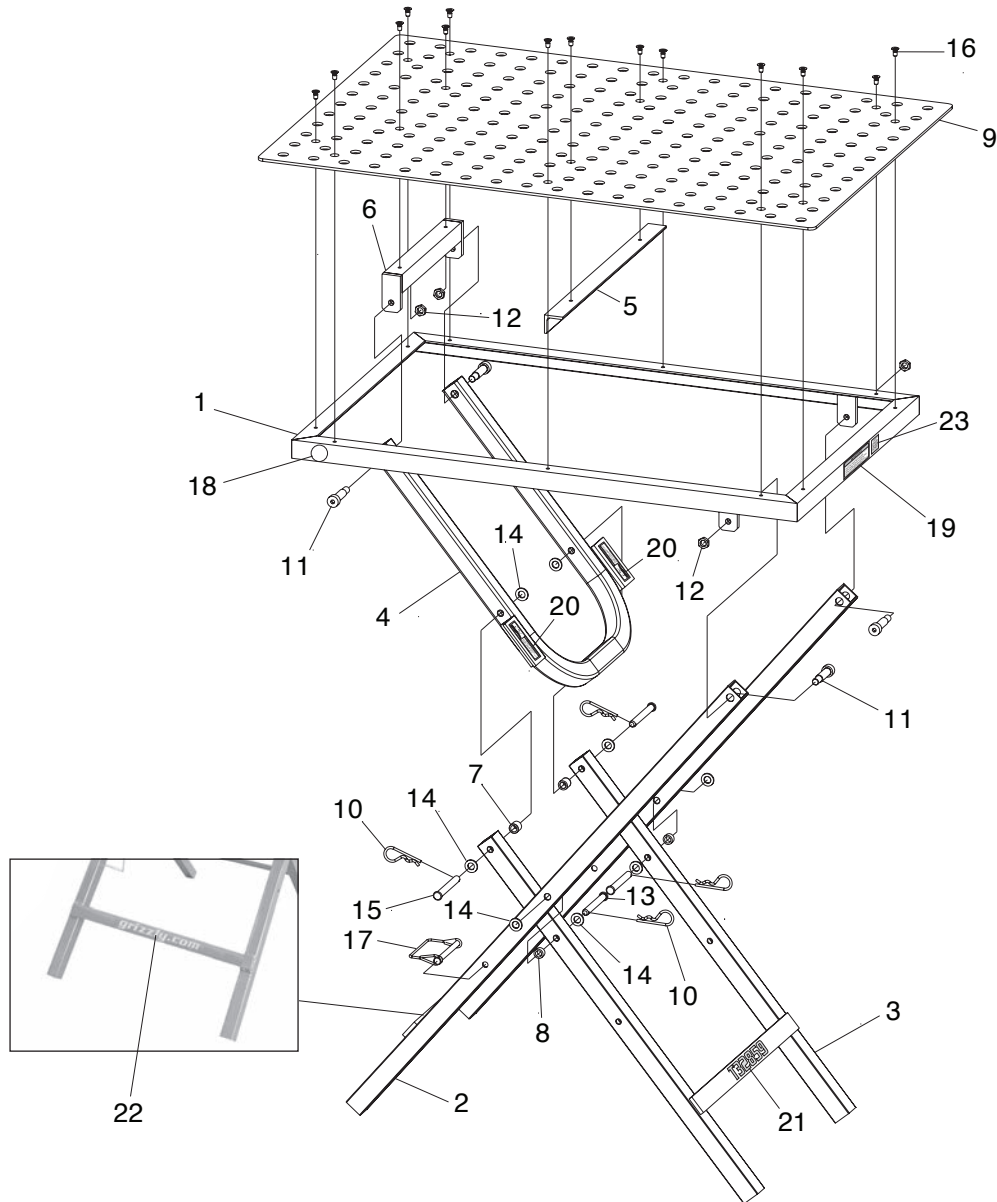


Figure 7. Long and short legs secured with lock pin.

3. Slide into convenient location for storage.



T32859 Parts Breakdown & List



REF	PART #	DESCRIPTION
1	PT32859001	FRAME
2	PT32859002	LEG (LONG)
3	PT32859003	LEG (SHORT)
4	PT32859004	U-BRACE
5	PT32859005	BRACE
6	PT32859006	U-BRACE BRACKET
7	PT32859007	SHAFT SLEEVE (LONG)
8	PT32859008	SHAFT SLEEVE (SHORT)
9	PT32859009	TABLE
10	PT32859010	COTTER PIN M3.5 X 75 HAIRPIN
11	PT32859011	SHOULDER SCREW M10-1.5 X 18, 12 X 30
12	PT32859012	HEX NUT M10-1.5 THIN

REF	PART #	DESCRIPTION
13	PT32859013	HINGE PIN 10 X 80 LOWER
14	PT32859014	FLAT WASHER 10MM
15	PT32859015	HINGE PIN 10 X 85 UPPER
16	PT32859016	FLAT HD SCR M6-1 X 12
17	PT32859017	FOLDING LOCK PIN
18	PT32859018	TOUCH-UP PAINT, GRIZZLY GREEN
19	PT32859019	WARNING LABEL
20	PT32859020	PINCH HAZARD LABEL
21	PT32859021	MODEL NUMBER LABEL
22	PT32859022	GRIZZLY.COM LABEL
23	PT32859023	QR CODE LABEL

Please Note: We do our best to stock replacement parts whenever possible, but we cannot guarantee that all parts shown here are available for purchase. Call (800) 523-4777 or visit our online parts store at www.grizzly.com to check for availability.

