



For questions or help with this product contact Tech Support at (570) 546-9663 or techsupport@grizzly.com

MODEL T33204 HEAVY-DUTY MOBILE TOOL STAND INSTRUCTIONS

Introduction

The Model T33204 Heavy-Duty Mobile Tool Stand is designed to provide a stable, mobile platform for mounting machinery and equipment.



Figure 1. Model T33204.

Specifications

- Footprint (Length x Width).....27" x 21"
- Height29½"
- Maximum Weight Capacity 300 lbs.

Needed for Assembly

- Open-End Wrenches or Sockets 13mm..... 2
- Phillips Head Screwdriver #2 1

Inventory

Description	Qty
A. Base Rail Assembly	1
B. Pivot Wheel Assembly.....	1
C. Base Wheels	2
D. Wheel Brackets	2
E. Feet	2
F. Legs.....	4

Description

Description	Qty
G. Short Aprons	2
H. Long Aprons.....	2
I. Support Brackets.....	2
J. Shelf	1
K. Table Top.....	1

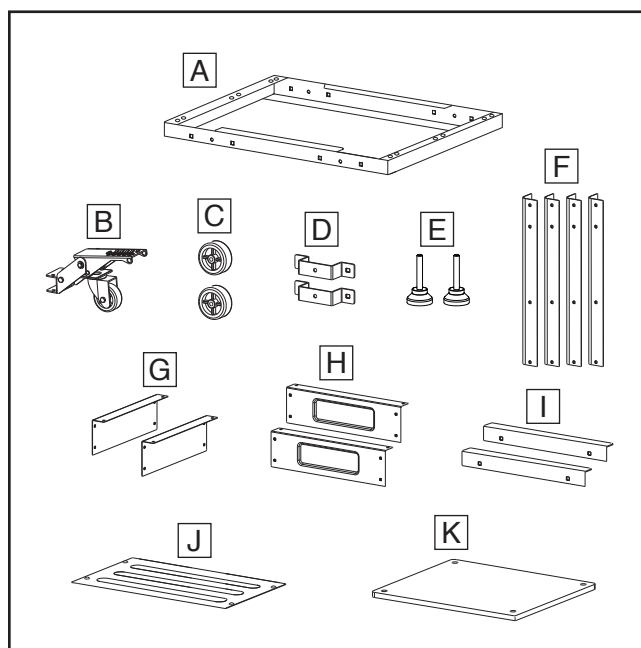


Figure 2. Inventory.

Fasteners (not shown)

Description	Qty
L. Flat Head Screws M8-1.25 x 30	4
M. Hex Bolts M8-1.25 x 60	4
N. Carriage Bolts M8-1.25 x 20.....	30
O. Lock Washers 8mm	32
P. Flat Washers 8mm	6
Q. Hex Nuts M8-1.25.....	38
R. Lock Nuts M8-1.25	2

COPYRIGHT © NOVEMBER, 2022 BY GRIZZLY INDUSTRIAL, INC., REVISED MARCH, 2024 (JA)

NO PORTION OF THIS MANUAL MAY BE REPRODUCED IN ANY SHAPE
OR FORM WITHOUT THE WRITTEN APPROVAL OF GRIZZLY INDUSTRIAL, INC.

(FOR MODELS MFD. SINCE 04/24) #JM22351 PRINTED IN TAIWAN

V2.03.24

Keep for Future Reference



Assembly

This Heavy-Duty Mobile Tool Stand must be fully assembled before it can be used. Before beginning the assembly process, refer to **Needed for Assembly** and gather all listed items.

To assemble stand:

1. Attach (1) support bracket to (2) legs with (2) M8-1.25 x 20 carriage bolts, (2) 8mm lock washers, and (2) M8-1.25 hex nuts. Repeat with remaining (1) support bracket and (2) legs (see **Figure 3**).

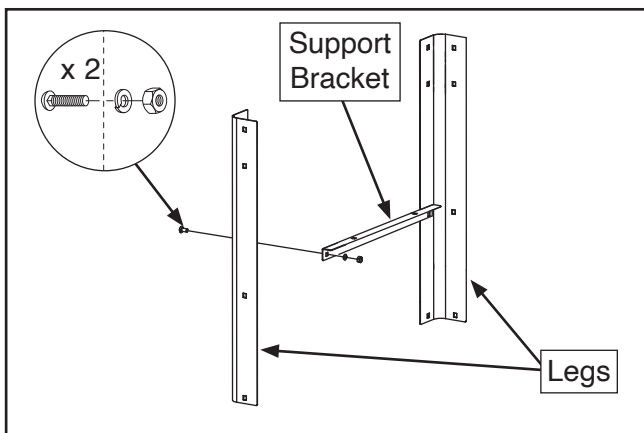


Figure 3. Installing support brackets.

2. Attach (1) short apron (see **Figure 4**) to each of the (2) leg assemblies created in **Step 1** using (8) M8-1.25 x 20 carriage bolts, (8) 8mm lock washers, and (8) M8-1.25 hex nuts.
3. Attach (2) long aprons (see **Figure 4**) to assembled (2) short aprons and leg assemblies with (8) M8-1.25 x 20 carriage bolts, (8) 8mm lock washers, and (8) M8-1.25 hex nuts.

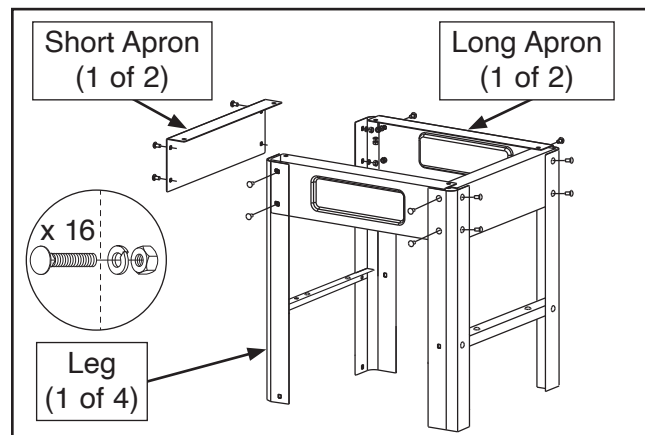


Figure 4. Assembling legs and aprons.

4. Attach shelf to support brackets with (4) M8-1.25 x 20 carriage bolts, (4) 8mm lock washers, and (4) M8-1.25 hex nuts (see **Figure 5**).

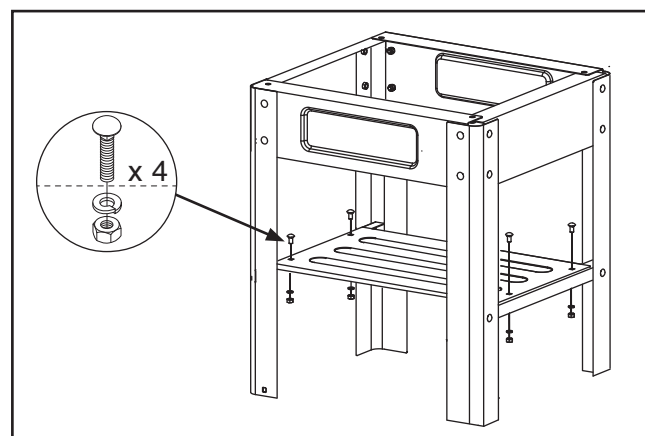


Figure 5. Installing shelf.

5. Mount (2) leveling feet to base rail assembly with (2) M8-1.25 hex nuts and (2) 8mm lock washers (see **Figure 6**).

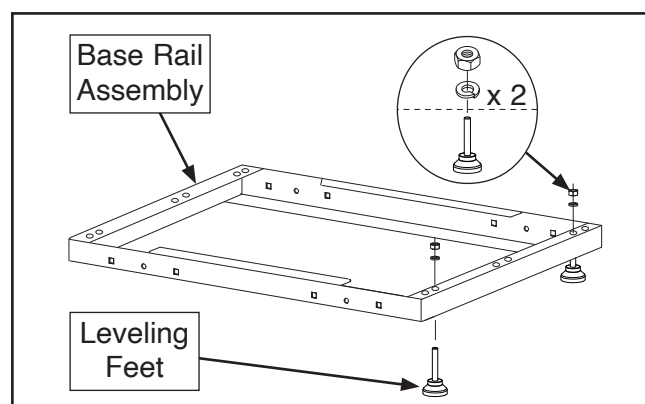


Figure 6. Installing leveling feet.



6. Carefully turn table upside down.
7. Install side of base rail assembly with leveling feet assembly on legs with (2) M8-1.25 x 20 carriage bolts, (2) 8mm lock washers, and (2) M8-1.25 hex nuts (see **Figure 7**).

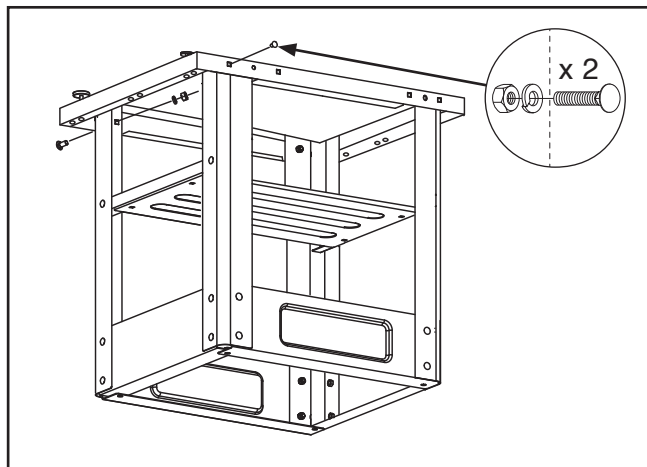


Figure 7. Installing legs on base.

8. Install (2) wheel brackets (see **Figure 8**) on either side of long rails with (4) M8-1.25 x 20 carriage bolts, (4) 8mm lock washers, and (4) M8-1.25 hex nuts.
9. Install (2) wheels (see **Figure 8**) in wheel brackets with (2) M8-1.25 x 60 hex bolts and (2) M8-1.25 lock nuts.

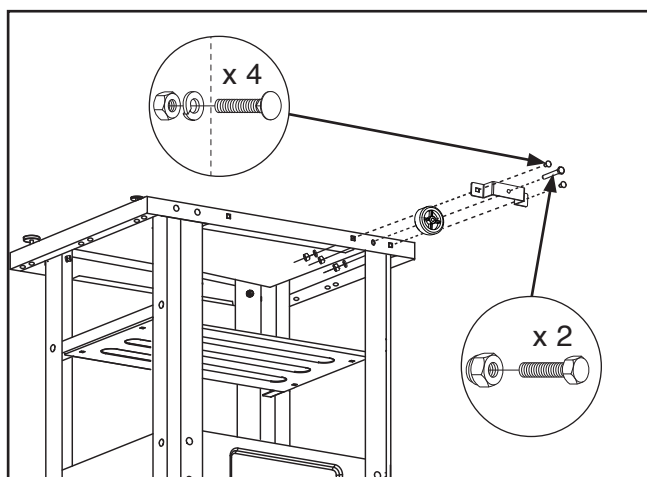


Figure 8. Installing wheels and wheel brackets.

10. Attach pivot wheel assembly to short rail on base rail assembly with leveling feet using (2) M8-1.25 x 60 hex bolts, (2) 8mm flat washers, and (2) M8-1.25 hex nuts (see **Figure 9**).

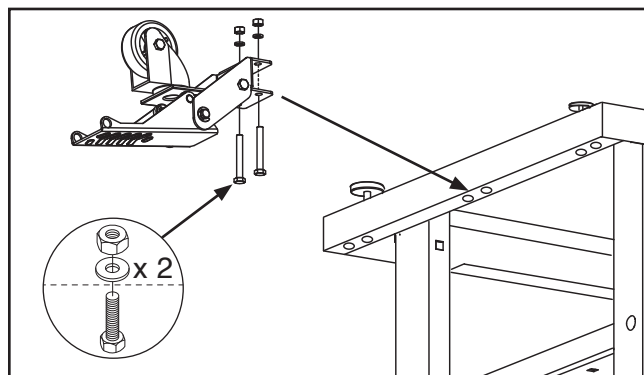


Figure 9. Installing pivot wheel assembly.

11. Return table to upright position and attach top with (4) M8-1.25 x 30 flat head screws, (4) 8mm flat washers, and (4) M8-1.25 hex nuts (see **Figure 10**).

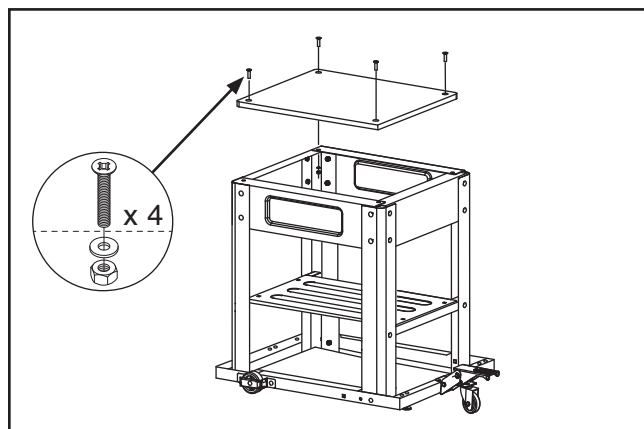
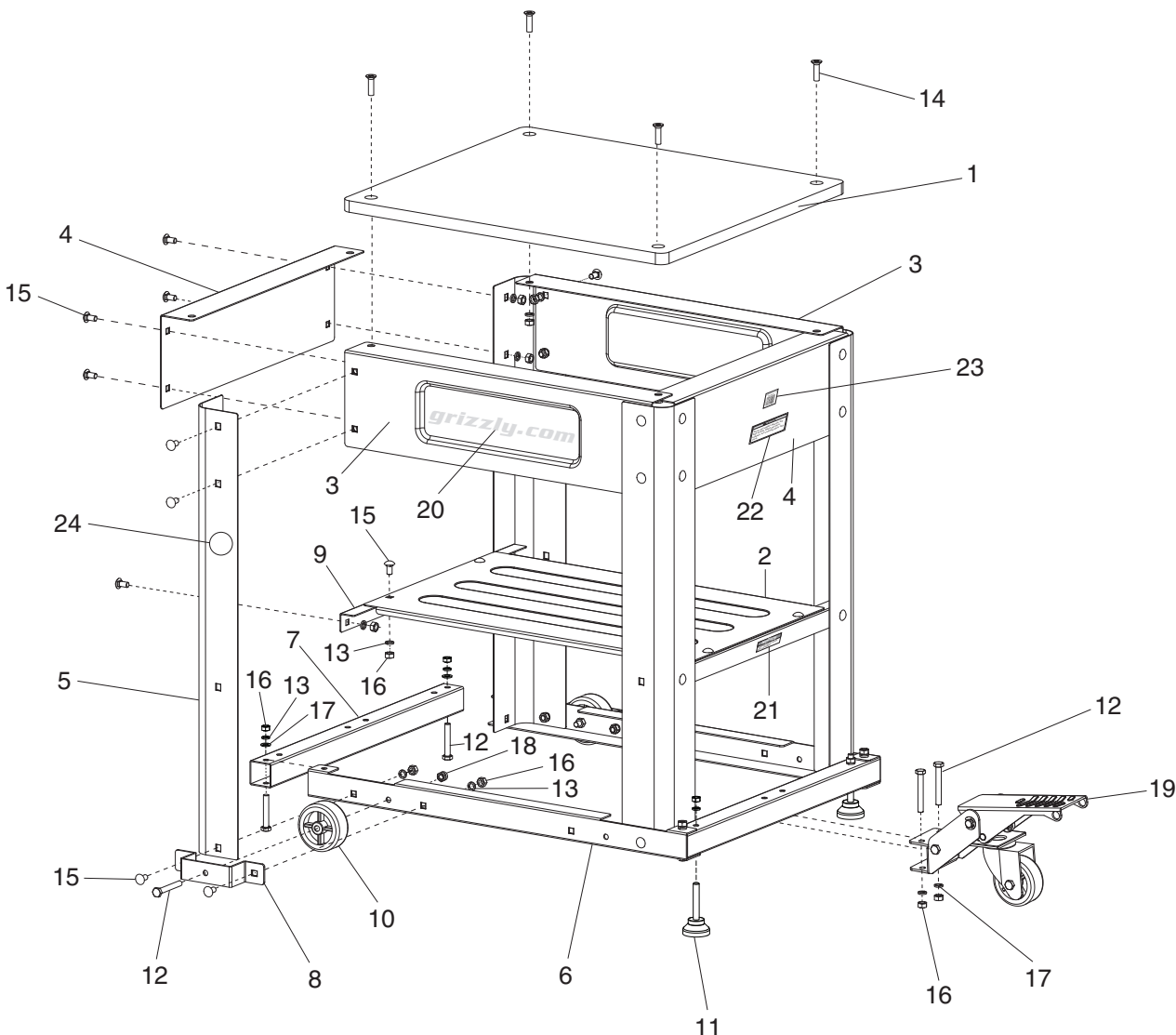


Figure 10. Installing table top.



T33204 Parts Breakdown & List



REF	PART #	DESCRIPTION
1	PT33204001	TABLE
2	PT33204002	SHELF
3	PT33204003	LONG APRON
4	PT33204004	SHORT APRON
5	PT33204005	LEG
6	PT33204006	LONG BASE RAIL
7	PT33204007	SHORT BASE RAIL
8	PT33204008	WHEEL BRACKET
9	PT33204009	SUPPORT BRACKET
10	PT33204010	BASE WHEEL
11	PT33204011	RUBBER LEVELING FOOT
12	PT33204012	HEX BOLT M8-1.25 X 60

REF	PART #	DESCRIPTION
13	PT33204013	LOCK WASHER 8MM
14	PT33204014	FLAT HD SCR M8-1.25 X 30
15	PT33204015	CARRIAGE BOLT M8-1.25 X 20
16	PT33204016	HEX NUT M8-1.25
17	PT33204017	FLAT WASHER 8MM
18	PT33204018	LOCK NUT M8-1.25
19	PT33204019	PIVOT WHEEL ASSEMBLY
20	PT33204020	GRIZZLY.COM LABEL
21	PT33204021	NOTICE LABEL
22	PT33204022	CAUTION LABEL
23	PT33204023	QR CODE LABEL
24	PT33204024	TOUCH-UP PAINT, GRIZZLY GREEN

Please Note: We do our best to stock replacement parts whenever possible, but we cannot guarantee that all parts shown here are available for purchase. Call (800) 523-4777 or visit our online parts store at www.grizzly.com to check for availability.

