



For questions or help with this product contact Tech Support at (570) 546-9663 or techsupport@grizzly.com

MODEL T33448 THIN KERF RIVING KNIFE FOR G1023RL SERIES INSTRUCTIONS

Introduction

Install the Model T33448 on your G1023RL series table saw for use with a thin kerf blade that matches the below specifications. The Model T33448 is compatible with the existing table insert and will reduce the risk of your workpiece pinching and binding while performing non-through cuts that require the removal of the blade guard.

! WARNING

- Riving knife **MUST BE** aligned with blade and secured tightly. A misaligned riving knife can cause workpiece to catch or bind, increasing the risk of kickback.
- Use a riving knife for all non-through operations, unless dado blade with less than 10 in. diameter is installed.

A riving knife mounts just below the blade's highest point of rotation, as shown in **Figure 1**.

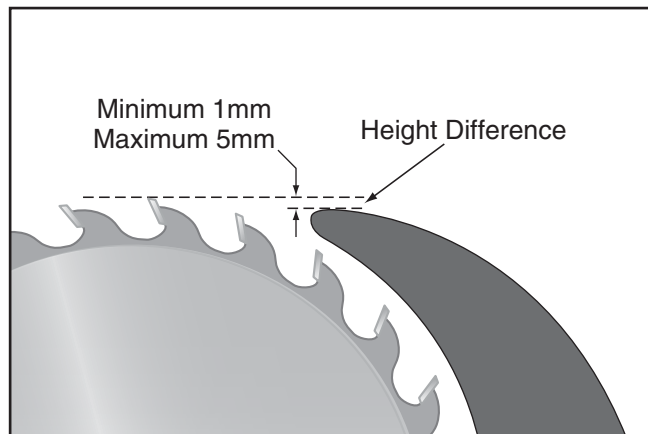


Figure 1. Height difference between riving knife and blade.

The height difference between the riving knife and the blade allows the workpiece to pass over the blade during non-through cuts (those in which the blade does not cut all the way through the thickness of the workpiece).

The riving knife must also be kept within the range shown in **Figure 2**. For these reasons, this riving knife is only compatible with 10" blades, as listed below in the **Specifications**.

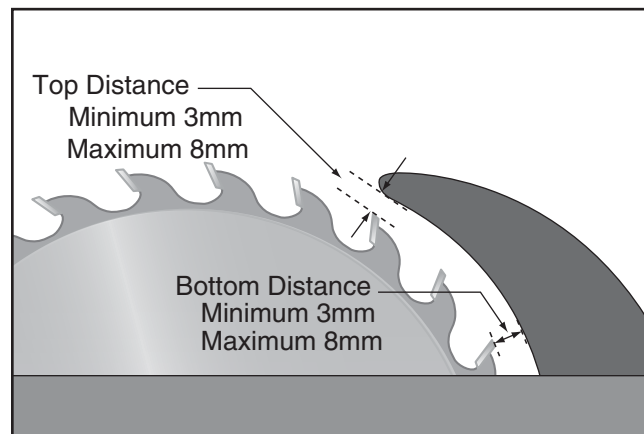


Figure 2. Allowable top and bottom distances between riving knife and blade.

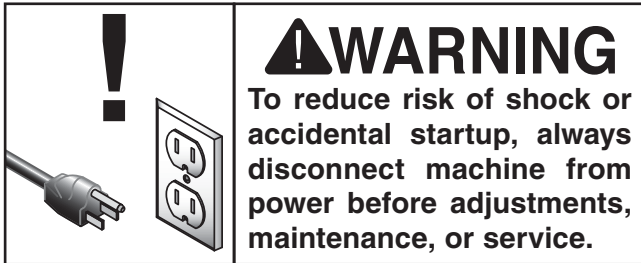
Specifications

- Riving Knife Thickness..... 2mm
- Required Blade Diameter 10 in.
- Required Blade Body Thickness..... 1.8mm
- Required Blade Kerf Thickness..... 2.2mm

Installation

Items Needed

	Qty
Open or Closed-End Wrench 1/2"	1
Straightedge 12"	1
Hex Wrenches 4, 5mm.....	1 Ea.



To install thin kerf riving knife:

1. Install thin kerf blade (refer to **Steps 1–4** of **Blade Installation** section of **Owner's Manual**) meeting specification requirements on **Page 1** of this update, and tilt blade to 90°.
2. Open right access door.
3. Flip quick-release lever up, insert riving knife into spreader adjustment bracket, then push lever down (see **Figure 3**).

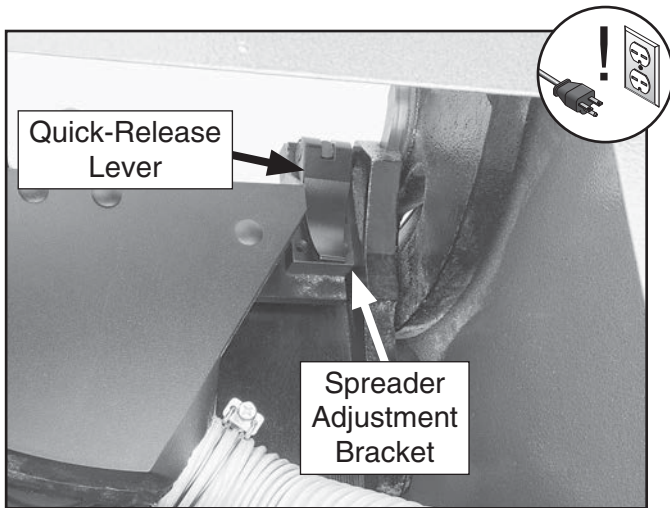


Figure 3. Location of quick-release lever (viewed from inside cabinet).

4. Fully tighten lock nut on lever assembly while lever is in locked position (see **Figure 4**). Pull riving knife up to verify it is locked.

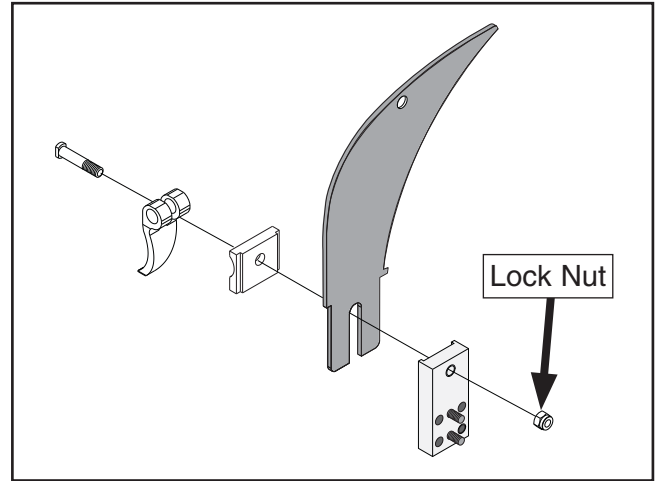


Figure 4. Location of lever assembly lock nut.

5. Check 90° stop bolt adjustment in **Blade Tilt Stops** section of **Owner's Manual**.
6. Place straightedge against top and bottom of blade and riving knife, as shown in **Figure 5**.

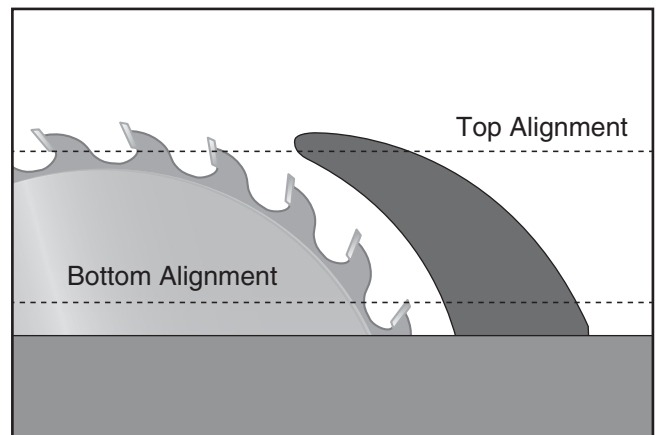


Figure 5. Checking top and bottom riving knife parallelism with blade.



Riving knife should be parallel with blade along its length at both positions and should be in "Alignment Zone," as shown in **Figure 6**.

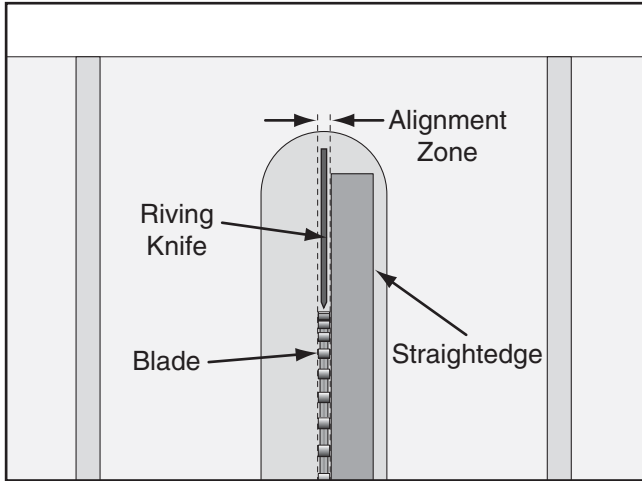


Figure 6. Riving knife alignment zone.

- If riving knife *is not* parallel with blade at either top or bottom, it may be bent. Remove riving knife and place it on a flat surface and check to see if riving knife lays evenly along its length. If riving knife does not lay evenly, proceed to **Step 7**.
 - If riving knife *is not* parallel with blade or *is not* inside alignment zone, proceed to **Step 8**.
 - If riving knife *is* parallel with blade and inside alignment zone, close right access door and install table insert. No additional steps are necessary.
- 7.** Bend riving knife by hand while installed or remove it to straighten it. Repeat **Step 6** to determine if riving knife is parallel with blade.
- If riving knife cannot be straightened properly, replace it.

- 8.** Flip quick-release lever up to remove riving knife.
- 9.** Loosen (2) cap screws on mounting block, then adjust set screws on block to move it in necessary direction (see **Figure 7**).

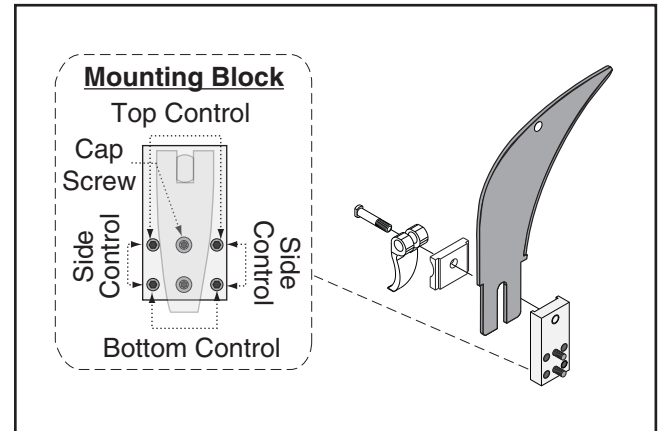


Figure 7. Mounting block controls.

- 10.** Install riving knife, then repeat **Step 6**.
- If riving knife *is* in alignment zone, proceed to **Step 11**.
 - If riving knife *is not* in alignment zone, continue adjusting set screws on mounting block as necessary to correctly position riving knife.
- 11.** Remove riving knife, tighten (2) cap screws on mounting block to secure riving knife adjustment, then install riving knife.
- 12.** Close right access door and install table insert.





Buy Direct and Save with Grizzly® – Trusted, Proven and a Great Value!
~Since 1983~

*Visit Our Website Today For
Current Specials!*

**ORDER
24 HOURS A DAY!
1-800-523-4777**

