



For questions or help with this product contact Tech Support at (570) 546-9663 or techsupport@grizzly.com

MODEL T33899 30" POWER TOOL CHARGING STATION INSTRUCTIONS

Introduction

The Model T33899 30" Powertool Charging Station features all-metal construction, a hanging rack for storing (6) power tools, a pre-installed power strip with (4) NEMA 5-15 outlets, and (2) USB ports conveniently located for easy access.

Specifications

Weight	28 lbs.
Dimensions (W x D x H).....	30 x 10 x 26 in.
Shelf Weight Capacity	30 lbs.
Total Weight Capacity.....	125 lbs.
Power Cord Length	55 in.
Included Plug Type.....	5-15
Max. Amperage Load.....	12A
Max. Voltage.....	125V
Frequency.....	60 Hz
Max. Wattage	1500W
USB Output	5VDC, Max. 2.1A

Inventory

Description	Qty
A. Charging Station w/Power Strip	1
B. Wood Screws #8 x 2 ⁵ / ₁₆ "	6
C. Lag Screws 1/4" x 2 1/2"	6
D. Drywall Anchors #8 x 2"	6
E. Flat Washers 1/4"	12
F. Mounting Bracket	1

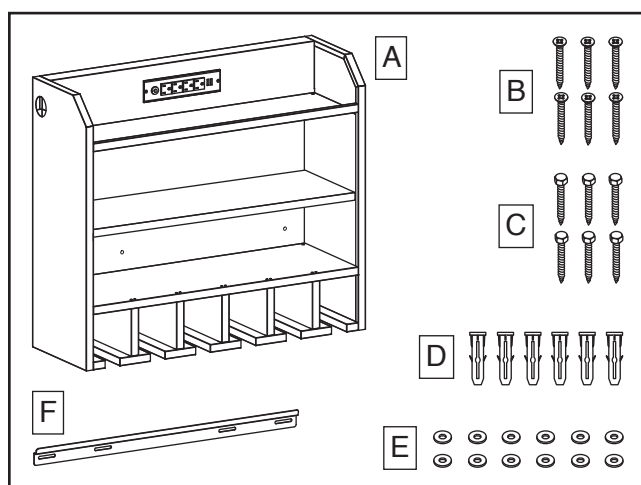


Figure 1. Model T33899 inventory.

Needed for Setup

The following items are needed, but not included, for the installation of the Model T33899.

Description	Qty
• Ruler 24"	1
• Power Drill	1
• Drill Bits 1/8", 1/4"	1 Ea.
• Phillips Head Screwdriver #2	1
• Wrench or Socket 10mm	1
• Stud Finder	1
• Level	1
• Pencil or Marker	1

COPYRIGHT © MAY, 2023 BY GRIZZLY INDUSTRIAL, INC.
NO PORTION OF THIS MANUAL MAY BE REPRODUCED IN ANY SHAPE
OR FORM WITHOUT THE WRITTEN APPROVAL OF GRIZZLY INDUSTRIAL, INC.
(FOR MODELS MFD. SINCE 07/23) #KS22737 PRINTED IN CHINA

V1.05.23

Keep for Future Reference

!WARNING

Serious injury could occur if you connect machine to power before completing setup process. **DO NOT** connect to power until instructed later in this manual.

110V Circuit Requirements

This charging station is prewired to operate on a power supply circuit that has a verified ground and meets the following requirements:

Nominal Voltage 110V, 115V, 120V
Cycle 60 Hz
Phase Single-Phase
Power Supply Circuit 15 Amps
Plug/Receptacle NEMA 5-15

A power supply circuit includes all electrical equipment between the breaker box or fuse panel in the building and the power strip. The power supply circuit used for this power strip must be sized to safely handle the full-load current drawn from the power strip for an extended period of time. (If this power strip is connected to a circuit protected by fuses, use a time delay fuse marked D.)

Grounding & Plug Requirements

This power strip **MUST** be grounded. In the event of certain malfunctions or breakdowns, grounding reduces the risk of electric shock by providing a path of least resistance for electric current.

This power strip is equipped with a power cord that has an equipment-grounding wire and a grounding plug. Only insert plug into a matching receptacle (outlet) that is properly installed and grounded in accordance with all local codes and ordinances. **DO NOT** modify the provided plug!

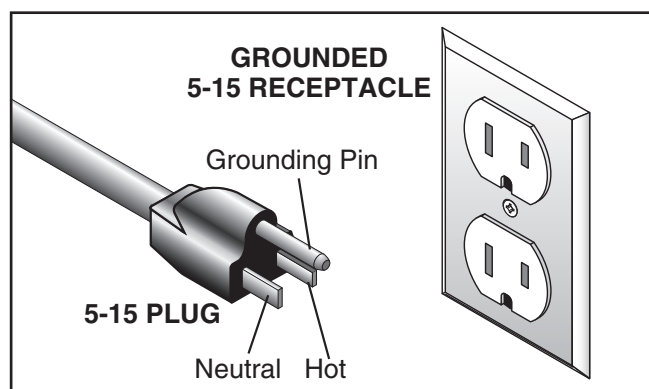


Figure 2. Typical 5-15 plug and receptacle.

!WARNING

- Do not connect to plug receptacle via extension cords or in series with other power strips.
- Keep electrical connections clear of flammable materials.
- Keep electrical connections dry. Do not use in damp or wet conditions.
- Do not connect devices to power strip that draw more than listed power strip rating. Equipment must be used in accordance with any instructions or labeling.
- Power strips are designed for use with low-powered loads, such as battery chargers. Not designed for use with high-powered loads, such as space heaters or microwaves.
- Do not run cord under floor coverings or where it may be tripped over.
- Not intended for outdoor use.
- Prevent unauthorized use by children or untrained users.

Resetting Circuit Breaker

The Model T33899 includes a 12A circuit breaker on the front of the power strip to help protect from electrical failure.

To reset circuit breaker:

1. DISCONNECT STATION FROM POWER!
2. Disconnect any accessories connected to charging station.
3. Press center circuit breaker button in until it locks in place (see **Figure 3**).

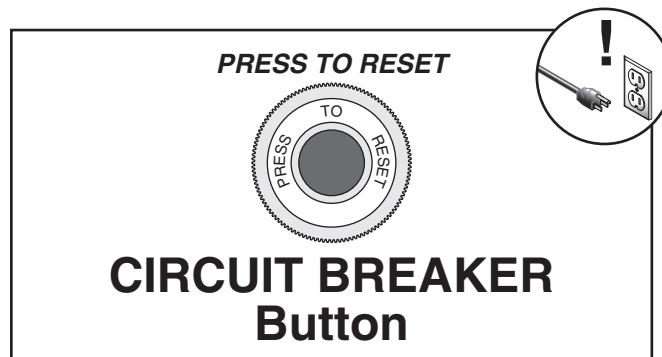


Figure 3. Resetting circuit breaker.

4. Re-connect station to power supply.



NOTICE

Charging station mounting location must be able to support 125 lbs. total weight capacity. Never exceed weight capacity of 30 lbs. per shelf/125 lbs. total.

Mounting Charging Station

The Model T33899 is mounted to wood studs and drywall using the included mounting hardware.

To mount charging station:

1. Remove (2) fasteners and (1) shipping bracket from charging station (see **Figure 4**).

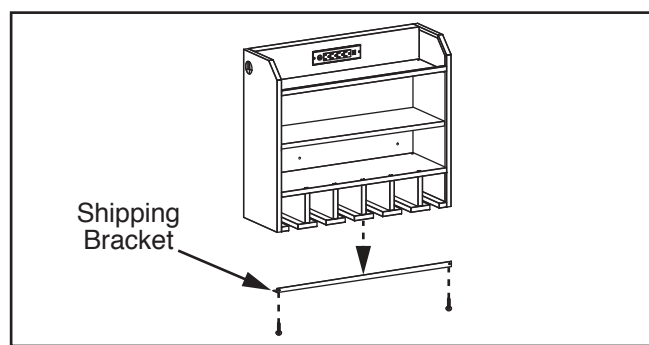


Figure 4. Removing shipping bracket.

2. Determine mounting height, then position mounting bracket over desired location.

Note: Top of charging station will be approximately 1½" above holes in mounting bracket. Position charging station so power strip and shelving can be easily accessed.

3. Mark locations for a minimum of (2) pilot holes through mounting bracket (see **Figure 5**). Place level on bracket when marking holes to help maintain uniformity.

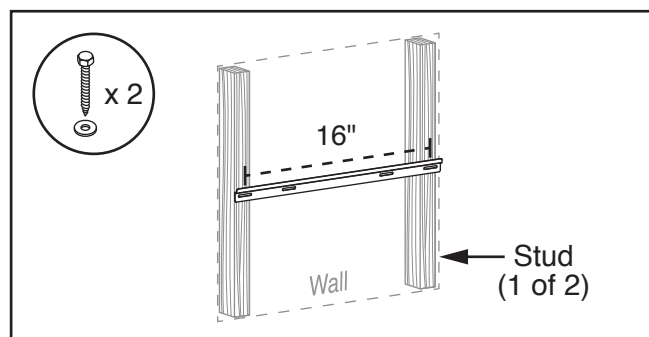


Figure 5. Positioning mounting bracket.

4. Drill pilot holes in locations marked in **Step 3**, then install mounting bracket into wood studs using (2) lag screws and flat washers.
5. Feed power cord through hole in charging station, then place charging station on mounting bracket (see **Figure 6**).

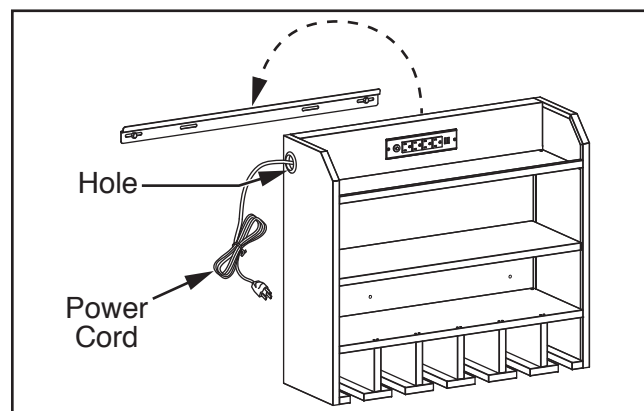


Figure 6. Placing charging station.

6. Drill (2) pilot holes into wall through holes in station interior (see **Figure 7**).

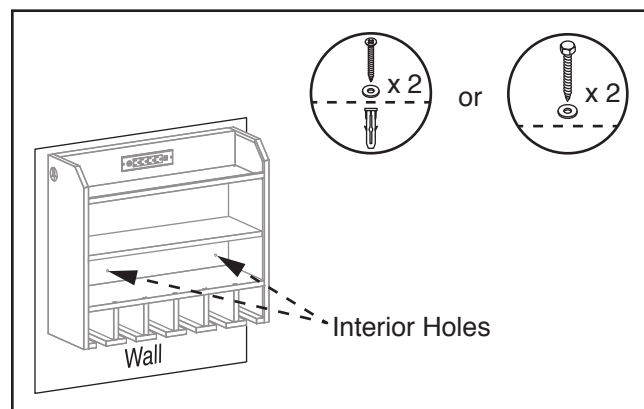


Figure 7. Positioning interior mounting locations.

7. Secure charging station to wall using included fasteners:

- If securing to wood studs, install (2) lag screws and flat washers.
- If securing to drywall, use (2) drywall anchors, wood screws, and flat washers.

8. Connect power cord to a power supply that meets the minimum specifications given in **Circuit Requirements** on **Page 2**.



Accessories

T30309—Grizzly PRO 20V 11-Tool Master Kit

Have instant power at your fingertips with professional-duty 20V Grizzly PRO cordless tools and accessories! Eleven great tools that all operate on the same low profile and incredibly lightweight lithium-ion batteries. Every tool comes with a one-year warranty!

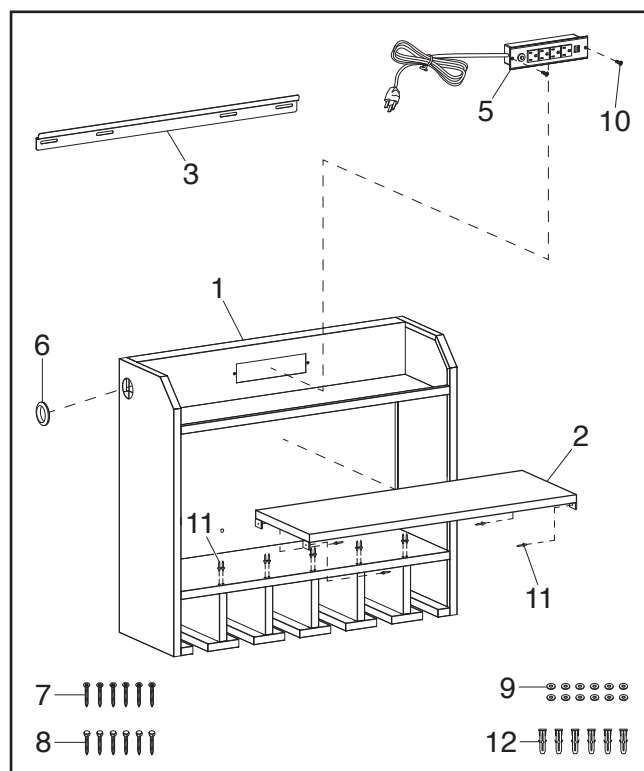
Grizzly PRO 20V 11-Tool Master Kit Includes:

T30290 Grizzly PRO Hammer Drill
T30291 Grizzly PRO Impact Driver
T30292 Grizzly PRO $\frac{3}{8}$ " Impact Wrench
T30293 Grizzly PRO Circular Saw
T30294 Grizzly PRO Reciprocating Saw
T30295 Grizzly PRO Jigsaw
T30296 Grizzly PRO Oscillating Tool
T30298 Grizzly PRO Inflator w/ LCD Panel
T30299 Grizzly PRO Angle Grinder
T30300 Grizzly PRO Bluetooth Speaker
T30301 Grizzly PRO USB Adaptor
T30304 Grizzly PRO 2.0Ah Li-Ion Batteries (2)
T30305 Grizzly PRO 4.0Ah Li-Ion Battery
T30303 Grizzly PRO 2.4A Dual Port Charger



Figure 8. T30309 Grizzly PRO 20V 11-Tool Master Kit.

T33899 Parts Breakdown & List



REF	PART #	DESCRIPTION
1	PT33899001	CHARGING STATION
2	PT33899002	INTERIOR SHELF
3	PT33899003	MOUNTING BRACKET
5	PT33899005	POWER STRIP DBEC BY213-M042K
6	PT33899006	RUBBER GROMMET 40MM
7	PT33899007	WOOD SCREW #8 X 2-5/16
8	PT33899008	LAG SCREW 1/4 X 2-1/2
9	PT33899009	FLAT WASHER 1/4
10	PT33899010	FLAT HD SCR M4-.7 X 8
11	PT33899011	RIVET 3 X 10MM BLIND, STEEL
12	PT33899012	DRYWALL ANCHOR #8 X 2

Please Note: We do our best to stock replacement parts whenever possible, but we cannot guarantee that all parts shown here are available for purchase. Call (800) 523-4777 or visit our online parts store at www.grizzly.com to check for availability.

