



For questions or help with this product contact Tech Support at (570) 546-9663 or techsupport@grizzly.com

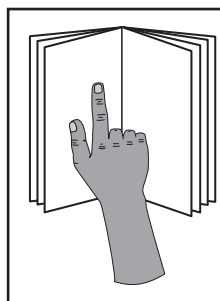
MODEL T33905 SCROLL SAW STAND for MODEL G0969 INSTRUCTIONS

Introduction

The Model T33905 Scroll Saw Stand is specifically designed for the G0969 Scroll Saw. The stand is made of steel, and the height can be adjusted from 31"-38".



Figure 1. Model T33905.



! WARNING

To reduce risk of serious injury, read these entire instructions, as well as the G0969 Scroll Saw manual, BEFORE using scroll saw stand.

Inventory

Description (Figure 2)	Qty
A. Top Braces (Long)	2
B. Top Braces (Short)	2
C. Legs.....	4
D. Bottom Braces (Short).....	2
E. Adjustable Leg Extensions.....	4
F. Bottom Braces (Long)	2
G. Hex Bolts $\frac{5}{16}$ "-18 x 1"	4
H. Carriage Bolts $\frac{5}{16}$ "-18 x $\frac{1}{2}$ ".....	24
I. Flat Washers $\frac{5}{16}$ ".....	32
J. Hex Nuts $\frac{5}{16}$ "-18	28

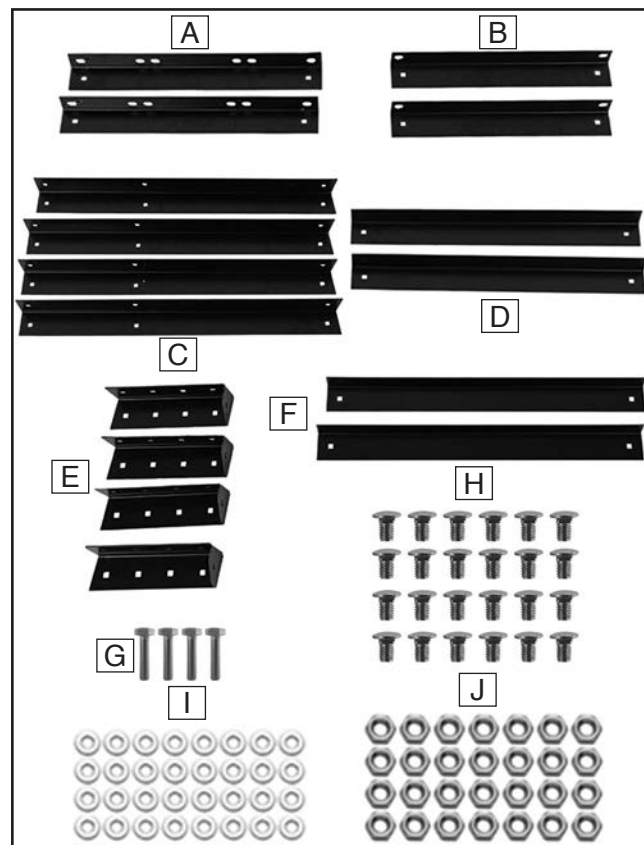


Figure 2. Inventory.

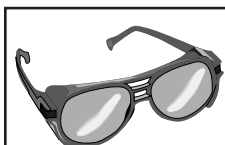
COPYRIGHT © OCTOBER, 2023 BY GRIZZLY INDUSTRIAL, INC.
NO PORTION OF THIS MANUAL MAY BE REPRODUCED IN ANY SHAPE
OR FORM WITHOUT THE WRITTEN APPROVAL OF GRIZZLY INDUSTRIAL, INC.
(FOR MODELS MFD. SINCE 07/23) #JM22794 PRINTED IN TAIWAN

V1.10.23

Keep for Future Reference

⚠ WARNING

- This stand was specifically designed for the G0969 Scroll Saw. DO NOT mount any machine but the G0969 Scroll Saw on this stand. Doing so could cause stand to tip or collapse, resulting in serious personal injury or property damage.
- Periodically check all fasteners and tighten, if necessary, prior to use.



⚠ WARNING

Wear safety glasses during the entire setup process!

Assembly

Items Needed	Qty
Wrench or Socket 12mm.....	1
Open-End Wrenches $\frac{9}{16}$ ".....	2
Additional Person	1

To assemble scroll saw stand:

1. Remove (4) leveling feet and (8) $\frac{3}{8}$ "-16 hex nuts from G0969 Scroll Saw base and install on (4) adjustable leg extensions, as shown in **Figure 3**.
2. Attach (4) adjustable leg extensions to bottom of legs with (8) $\frac{5}{16}$ "-18 x $\frac{1}{2}$ " carriage bolts, $\frac{5}{16}$ " flat washers, and $\frac{5}{16}$ "-18 hex nuts (see **Figure 3**).

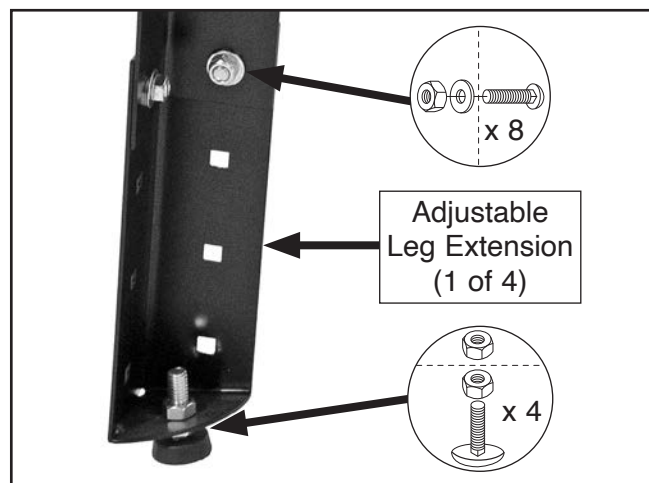


Figure 3. Adjustable leg extensions attached to legs.

3. Attach (1) long bottom brace to (2) legs with (2) $\frac{5}{16}$ "-18 x $\frac{1}{2}$ " carriage bolts, $\frac{5}{16}$ " flat washers, and $\frac{5}{16}$ "-18 hex nuts, as shown in **Figure 4**.

Note: Only hand tighten all fasteners for now. You will be told when to tighten fasteners later in these instructions.

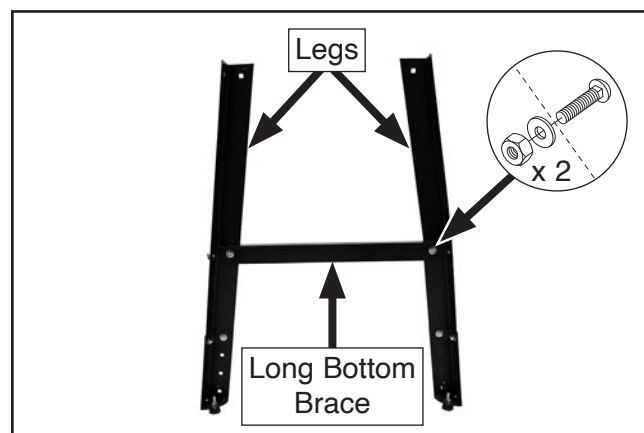


Figure 4. Long bottom brace attached to legs.

4. Repeat **Step 3** with remaining (1) long bottom brace and (2) legs.
5. Attach (2) leg assemblies with (2) short bottom braces, (4) $\frac{5}{16}$ "-18 x $\frac{1}{2}$ " carriage bolts, $\frac{5}{16}$ " flat washers, and $\frac{5}{16}$ "-18 hex nuts, as shown in **Figure 5**.

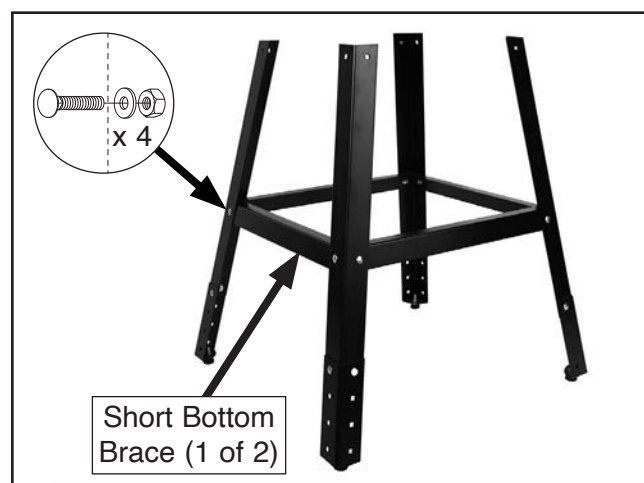


Figure 5. Leg assemblies attached with short bottom braces.



6. Attach (2) long top braces to legs with (4) $\frac{5}{16}$ "-18 x $\frac{1}{2}$ " carriage bolts, $\frac{5}{16}$ " flat washers, and $\frac{5}{16}$ "-18 hex nuts, as shown in **Figure 6**.

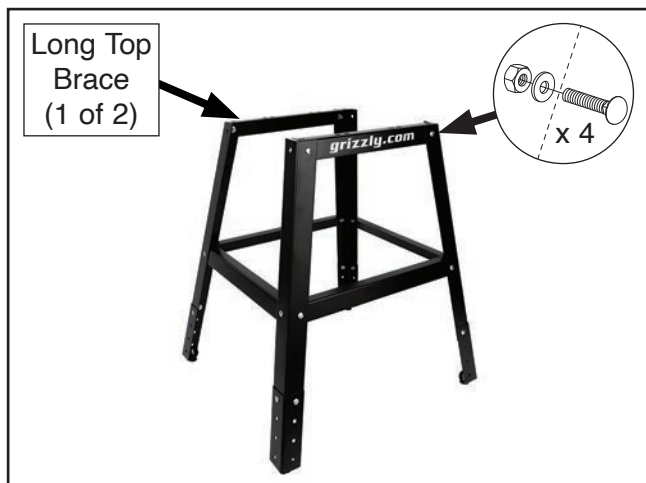


Figure 6. Long top braces attached to legs.

7. Attach (2) short top braces to legs with (4) $\frac{5}{16}$ "-18 x $\frac{1}{2}$ " carriage bolts, $\frac{5}{16}$ " flat washers, and $\frac{5}{16}$ "-18 hex nuts, as shown in **Figure 7**.

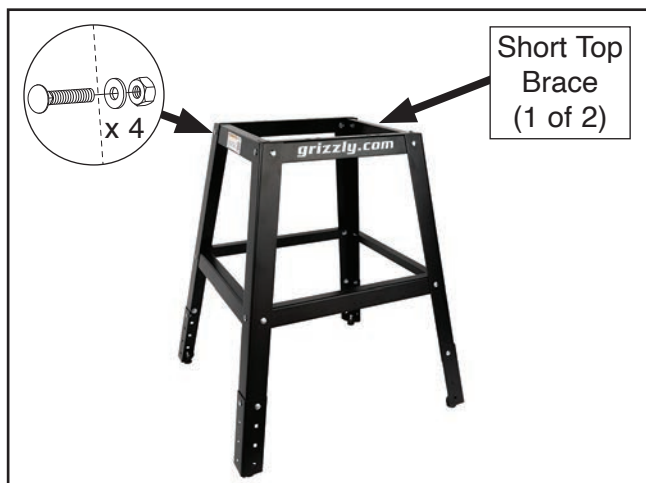


Figure 7. Short top brace attached to stand legs.

8. Ensure stand is level, side to side and front to back, then tighten all fasteners installed in **Steps 3–7**.

Mounting Model G0969 Scroll Saw on Stand

Tools Needed

	Qty
Safety Glasses (for each person).....	1 Pr.
Wrenches 12mm.....	2

To mount G0969 Scroll Saw on stand:

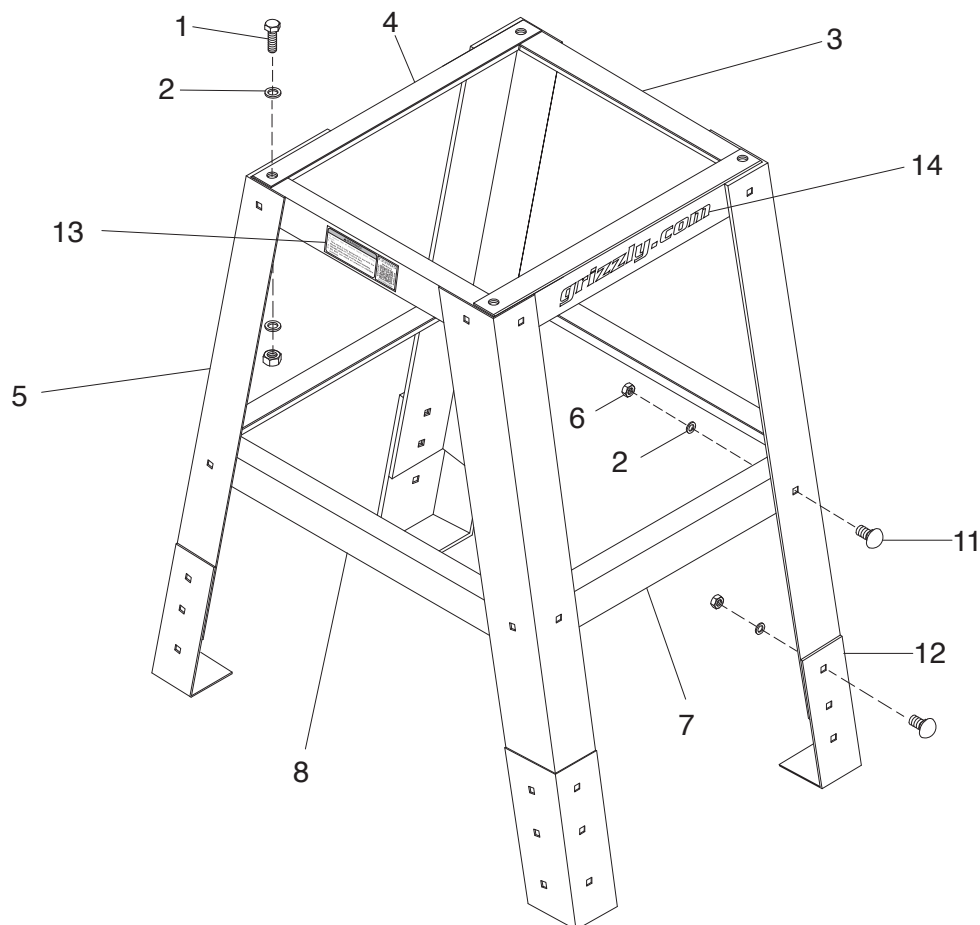
1. Place stand on flat, level surface.
2. With help from an assistant, position scroll saw on stand.
3. Secure scroll saw to stand using (4) $\frac{5}{16}$ "-18 x 1" hex bolts, (8) $\frac{5}{16}$ " flat washers, and (4) $\frac{5}{16}$ "-18 hex nuts (see **Figure 8**).



Figure 8. G0969 Scroll Saw mounted on stand.



T33905 Parts Breakdown & List



REF	PART #	DESCRIPTION
1	PT33905001	HEX BOLT 5/16-18 X 1
2	PT33905002	FLAT WASHER 5/16
3	PT33905003	TOP BRACE (SHORT)
4	PT33905004	TOP BRACE (LONG)
5	PT33905005	LEG
6	PT33905006	HEX NUT 5/16-18

REF	PART #	DESCRIPTION
7	PT33905007	BOTTOM BRACE (SHORT)
8	PT33905008	BOTTOM BRACE (LONG)
11	PT33905011	CARRIAGE BOLT 5/16-18 X 1/2
12	PT33905012	ADJUSTABLE LEG EXTENSION
13	PT33905013	COMBO WARNING LABEL
14	PT33905014	GRIZZLY.COM LABEL

WARNING

Safety labels help reduce the risk of serious injury caused by machine hazards. If any label comes off or becomes unreadable, the owner of this machine **MUST** replace it in the original location before resuming operations. For replacements, contact (800) 523-4777 or www.grizzly.com.

