



MODEL T33907

2-3 HP 110V 1-PHASE

MAGNETIC SWITCH

INSTRUCTIONS

For questions or help with this product contact Tech Support at (570) 546-9663 or techsupport@grizzly.com

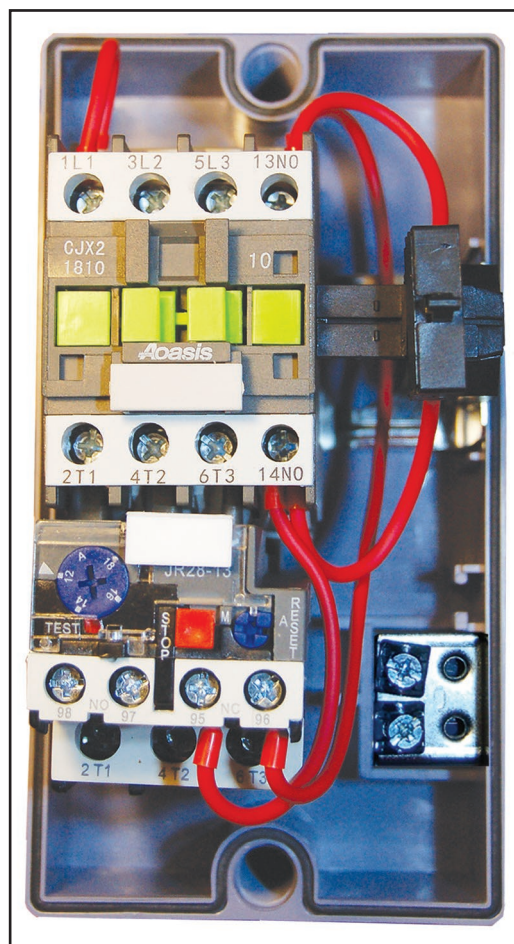


Figure 1. Model T33907.

⚠ WARNING

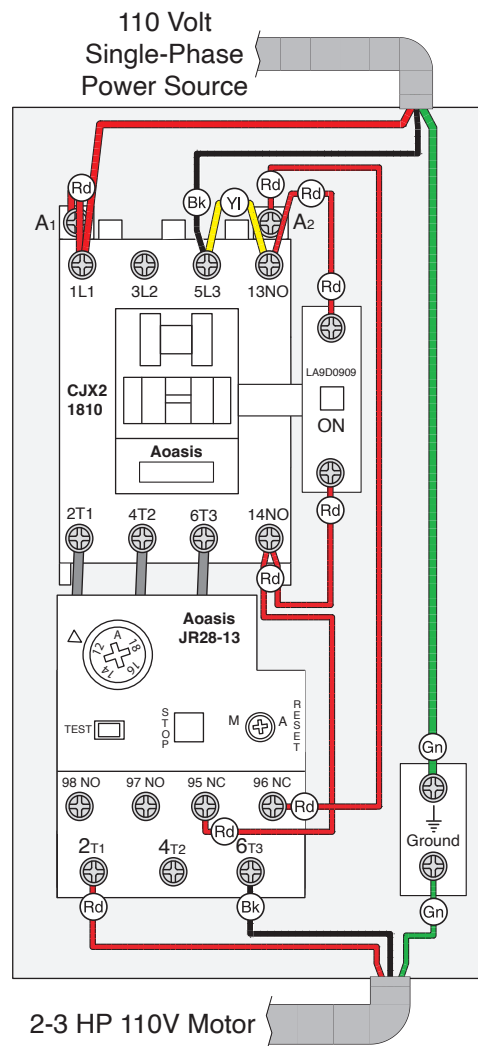
Electrocution or fire could occur if this switch is not installed by an electrician or qualified service personnel!

Contactor Aoasis
CJX2-1810 (110V Coil)

COLOR KEY

BLACK	Bk
GREEN	Gn
RED	Rd
YELLOW	Yl

Thermal Overload
Relay Aoasis JR28-13
(12-18A)



DISCLAIMER: Color of wires shown in pictures and diagrams may not match the color of motor wires and incoming power wires in your application. When installing this magnetic switch, consult the wiring diagram in the motor junction box and the wiring diagram inside the magnetic switch cover.

OPERATION: When pushed, the green ON button on the outside cover of the magnetic switch energizes a magnetic coil, which pulls the contactor closed. The main current then passes through the contactor and thermal overload relay to the motor. The red OFF button breaks the magnetic field, which opens the contactor and disconnects the current to the motor. A motor overload or an interruption of the power supply will also break the magnetic field and release the contactor and disconnect current to the motor. The motor will not restart until the overload is reset and/or the ON button is pushed.

Thermal Relay Overload Amp

Adjustment Dial: Turn this dial to the amperage setting specified by the motor manufacturer. Typically, this setting is 100–110% of the amperage load listed on the motor data plate. Please note that turning this dial has no effect on increasing motor horsepower. If turned too high, the motor can overheat and be damaged before the relay trips.

Manual Trip Test Lever: If the thermal relay function is in question, run the motor and use a wooden toothpick to push the red TEST button in. If motor shuts off, thermal relay has tripped and is functional.

Manual Contactor Override

Lug: When pushed, the contactor is manually closed for troubleshooting purposes only.

ON Button: When pushed, power is sent to the magnetic field coil, closing the contactor and sending power to the motor.

Manual/Auto Reset Button:

In the out position, the thermal relay is in manual reset mode. This means you must re-install the outside cover and push the red OFF button, then push the green ON button to reset the thermal relay. In the in position, the thermal relay will automatically reset when it has cooled.

OFF Button: When pushed, the current going to the magnetic field coil is cut, which opens the contactor and cuts power to the motor.

