



For questions or help with this product contact Tech Support at (570) 546-9663 or techsupport@grizzly.com

MODEL T34064 INFEED/OUTFEED EXTENSION WINGS INSTRUCTIONS

Introduction

The Model T34064 Infeed/Outfeed Extension Wings for the Model G1026 3 HP Shaper are constructed of precision-ground cast iron and measure 21³/₄" long, 10" wide, and 1¹/₂" tall. A mounting template, drill bits, plug tap, and mounting hardware are included.

Inventory

Main (Figure 1)	Qty
A. Extension Wing (Left).....	1
B. Extension Wing (Right).....	1
C. Mounting Template.....	1
D. Drill Bit 4mm.....	1
E. Drill Bit ⁵ / ₁₆ ".....	1
F. Plug Tap ³ / ₈ "-16.....	1
G. Cap Screws ³ / ₈ "-16 x 1 ¹ / ₄ ".....	8
H. Flat Washers ³ / ₈ ".....	8
I. Lock Washers ³ / ₈ ".....	8

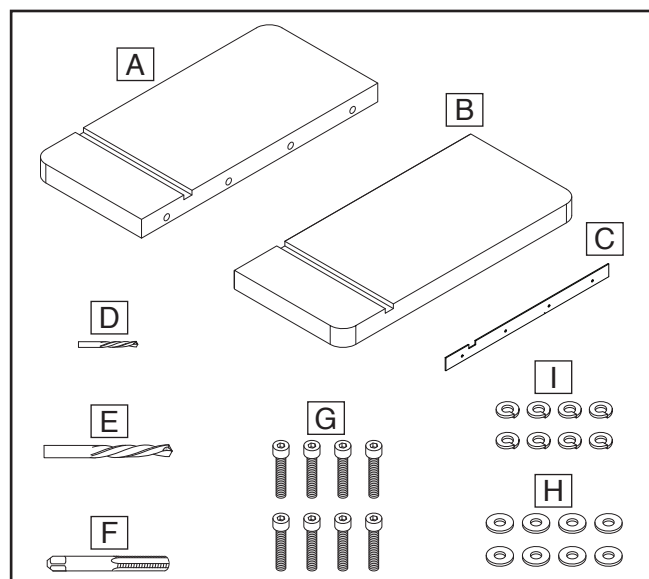
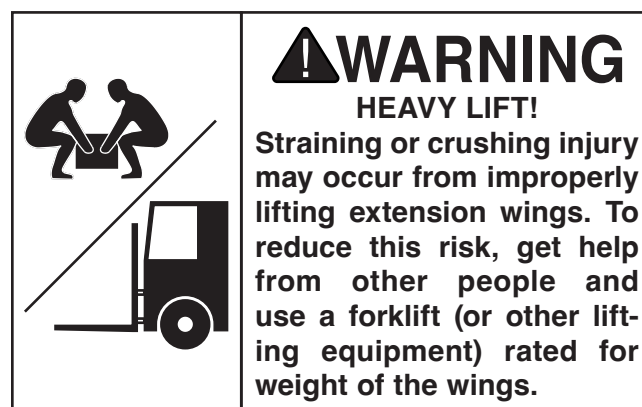


Figure 1. Main inventory.

Installation



The extension wings must be mounted before they can be used. Before beginning the assembly process, refer to **Items Needed** and gather all listed items. To ensure the assembly process goes smoothly, first clean any parts that are covered or coated in heavy-duty rust preventative (if applicable).

Items Needed	Qty
Hex Wrench 8mm.....	1
Safety Glasses (Per Person).....	1 Pr.
Painter's Tape.....	As Needed
Power Drill.....	1
T-Handle Tap Wrench #0-1/4".....	1
Shop Rags.....	As Needed
Degreaser Solvent.....	As Needed

COPYRIGHT © JANUARY, 2024 BY GRIZZLY INDUSTRIAL, INC.
NO PORTION OF THIS MANUAL MAY BE REPRODUCED IN ANY SHAPE
OR FORM WITHOUT THE WRITTEN APPROVAL OF GRIZZLY INDUSTRIAL, INC.
(FOR MODELS MFD. SINCE 12/23) #JA23029 PRINTED IN TAIWAN

V1.01.24

Keep for Future Reference

To install extension wings:

1. DISCONNECT MACHINE FROM POWER!
2. Clean and inspect machine table edges.

IMPORTANT: Models manufactured after 12/23 come with pre-drilled screw holes. If your Model G1026 has pre-drilled screw holes on both sides, proceed to **Step 10**.

3. Align mounting template with top edge of table (see **Figure 2**), and ensure key on mounting template is aligned with table miter slot.

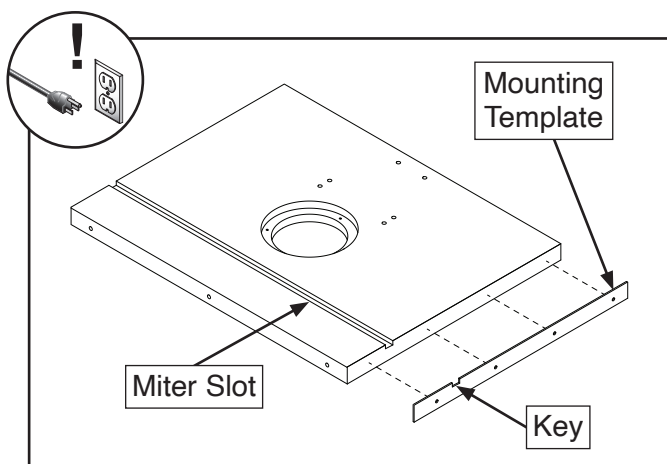


Figure 2. Positioning mounting template.

4. Tape mounting template in place.
5. Use 4mm bit to drill pilot holes through table at each of (4) guide holes in mounting template.
6. Repeat **Steps 3–5** on opposite side of table.
7. Remove mounting template.
8. Enlarge all eight pilot holes using $\frac{5}{16}$ " drill bit.
9. Use $\frac{3}{8}$ "-16 plug tap to cut threads clockwise in drilled holes.
10. Align extension wings with tapped holes and secure with (8) $\frac{3}{8}$ "-16 x $1\frac{1}{4}$ " cap screws, $\frac{3}{8}$ " lock washers, and $\frac{3}{8}$ " flat washers (see **Figure 3**).

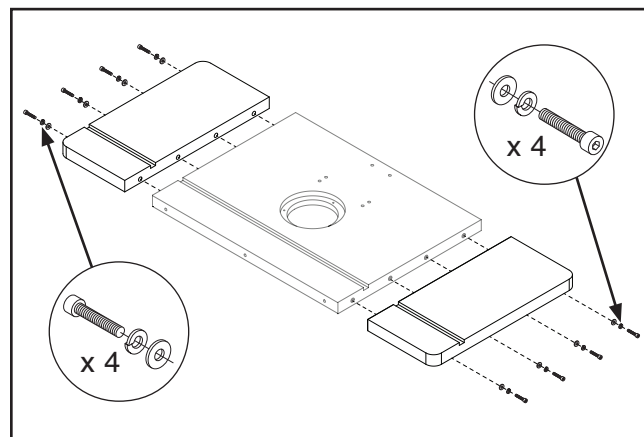
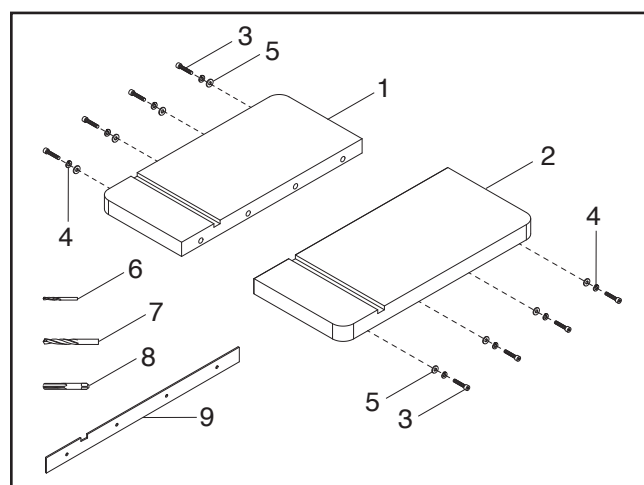


Figure 3. Attaching extension wings.

T34064 Parts Breakdown & List



REF	PART #	DESCRIPTION
1	PT34064001	EXTENSION WING (LEFT)
2	PT34064002	EXTENSION WING (RIGHT)
3	PT34064003	CAP SCREW 3/8-16 X 1-1/4
4	PT34064004	LOCK WASHER 3/8
5	PT34064005	FLAT WASHER 3/8
6	PT34064006	DRILL BIT 4MM
7	PT34064007	DRILL BIT 5/16
8	PT34064008	PLUG TAP 3/8-16
9	PT34064009	MOUNTING TEMPLATE

Please Note: We do our best to stock replacement parts when possible, but we cannot guarantee that all parts shown are available for purchase. Call (800) 523-4777 or visit www.grizzly.com/parts to check for availability.

