



For questions or help with this product contact Tech Support at (570) 546-9663 or techsupport@grizzly.com

MODEL T34065 INFEED/OUTFEED EXTENSION WINGS INSTRUCTIONS

Introduction

The Model T34065 Infeed/Outfeed Extension Wings for the Model G1035 1½ HP Shaper are constructed of precision-ground cast iron and measure 17⅞" long, 10" wide, and 1⅜" tall. A mounting template, drill bits, plug tap, and mounting hardware are included.

Inventory

Main (Figure 1)	Qty
A. Extension Wing (Left).....	1
B. Extension Wing (Right).....	1
C. Mounting Template.....	1
D. Drill Bit 4mm.....	1
E. Drill Bit ⅝".....	1
F. Plug Tap ⅜"-16.....	1
G. Cap Screws ⅜"-16 x 1¼".....	8
H. Flat Washers ⅜".....	8
I. Lock Washers ⅜".....	8

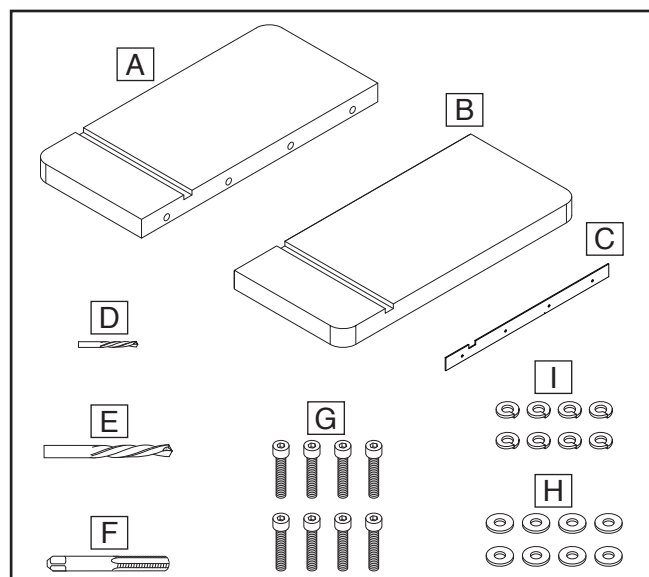


Figure 1. Main inventory.

Installation

! WARNING
Wear safety glasses during the entire setup process!

! WARNING
HEAVY LIFT!
Straining or crushing injury may occur from improperly lifting extension wings. To reduce this risk, get help from other people and use a forklift (or other lifting equipment) rated for weight of the wings.

The extension wings must be mounted before they can be used. Before beginning the assembly process, refer to **Items Needed** and gather all listed items. To ensure the assembly process goes smoothly, first clean any parts that are covered or coated in heavy-duty rust preventative (if applicable).

Items Needed	Qty
Hex Wrench 8mm.....	1
Safety Glasses (Per Person).....	1 Pr.
Painter's Tape.....	As Needed
Power Drill.....	1
T-Handle Tap Wrench #0-¼".....	1
Shop Rags.....	As Needed
Degreaser Solvent.....	As Needed

COPYRIGHT © JANUARY, 2024 BY GRIZZLY INDUSTRIAL, INC.
NO PORTION OF THIS MANUAL MAY BE REPRODUCED IN ANY SHAPE
OR FORM WITHOUT THE WRITTEN APPROVAL OF GRIZZLY INDUSTRIAL, INC.
(FOR MODELS MFD. SINCE 12/23) #JA23030 PRINTED IN TAIWAN

V1.01.24

Keep for Future Reference

To install extension wings:

1. DISCONNECT MACHINE FROM POWER!
2. Clean and inspect machine table edges.

IMPORTANT: Models manufactured after 12/23 come with pre-drilled screw holes. If your Model G1035 has pre-drilled screw holes on both sides, proceed to **Step 10**.

3. Align mounting template with top edge of table (see **Figure 2**), and ensure key on mounting template is aligned with table miter slot.

Note: G1035 models manufactured before 12/23 have (3) pre-drilled holes on right-hand side, but (2) additional holes will still need to be drilled to install right extension wing.

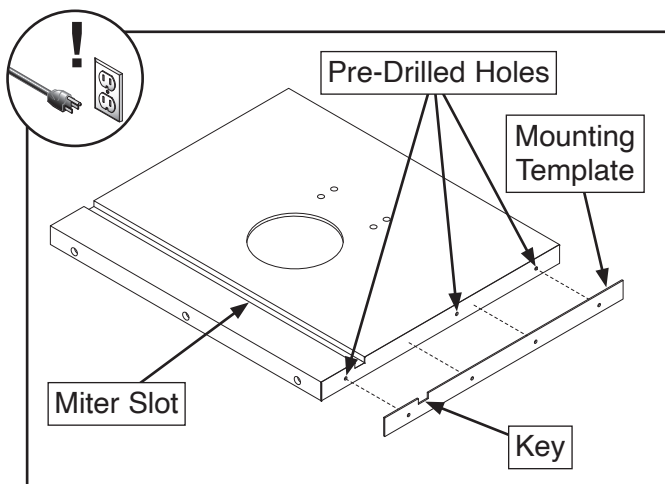


Figure 2. Positioning mounting template.

4. Tape mounting template in place.
5. Use 4mm bit to drill pilot holes through right side of table at (2) middle guide holes in mounting template.
6. Repeat **Steps 3–5** on left side of table, using all (4) guide holes in mounting template.
7. Remove mounting template.
8. Enlarge all (6) pilot holes using $\frac{5}{16}$ " drill bit.
9. Use $\frac{3}{8}$ "-16 plug tap to cut threads clockwise in freshly drilled holes.

10. Align extension wings with tapped holes and secure with (8) $\frac{3}{8}$ "-16 x $1\frac{1}{4}$ " cap screws, $\frac{3}{8}$ " lock washers, and $\frac{3}{8}$ " flat washers (see **Figure 3**).

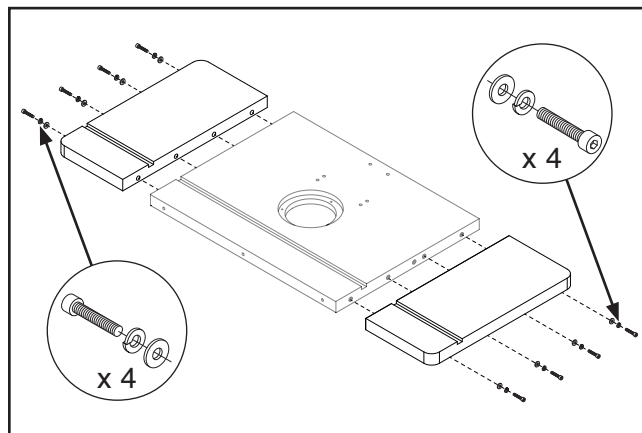
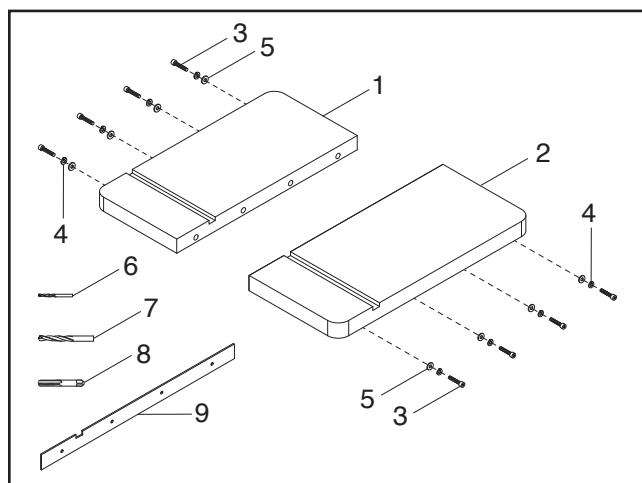


Figure 3. Attaching extension wings.

T34065 Parts Breakdown & List



REF	PART #	DESCRIPTION
1	PT34065001	EXTENSION WING (LEFT)
2	PT34065002	EXTENSION WING (RIGHT)
3	PT34065003	CAP SCREW 3/8-16 X 1-1/4
4	PT34065004	LOCK WASHER 3/8
5	PT34065005	FLAT WASHER 3/8
6	PT34065006	DRILL BIT 4MM
7	PT34065007	DRILL BIT 5/16
8	PT34065008	PLUG TAP 3/8-16
9	PT34065009	MOUNTING TEMPLATE

Please Note: We do our best to stock replacement parts when possible, but we cannot guarantee that all parts shown are available for purchase. Call (800) 523-4777 or visit www.grizzly.com/parts to check for availability.

