



For questions or help with this product contact Tech Support at (570) 546-9663 or techsupport@grizzly.com

MODEL T34120 DRILL PRESS CABINET INSTRUCTIONS

Introduction

The Model T34120 Drill Press Cabinet features solid oak and veneer construction, and 5" locking swivel casters for easy movement. The cabinet measures 25" wide, 25" deep, and 32" tall, and includes seven felt-lined drawers, four storage shelves, and chrome hardware.



Figure 1. Model T34120 Drill Press Cabinet.

⚠ WARNING

- To reduce risk of crushing injuries from cabinet tipping over on you:
 - Do not stand on cabinet or in drawers.
 - Push cabinet only. Do not pull it.
 - Only open one drawer at a time.
 - Only move or transport cabinet with all drawers closed.
- Do not exceed weight capacity:
 - Max roller cabinet weight limit (including contents) is 300 lbs.
- To prevent accidental rolling, always lock brakes after moving cabinet.
- Do not allow children to have unsupervised access to cabinet.

Inventory

Description (Figure 2)	Qty
A. Cabinet	1
B. Locking Swivel Casters 5"	4
C. Flat Head Cap Screws 1/4"-20 x 3/4"	16
D. Flat Washers 1/4"	16

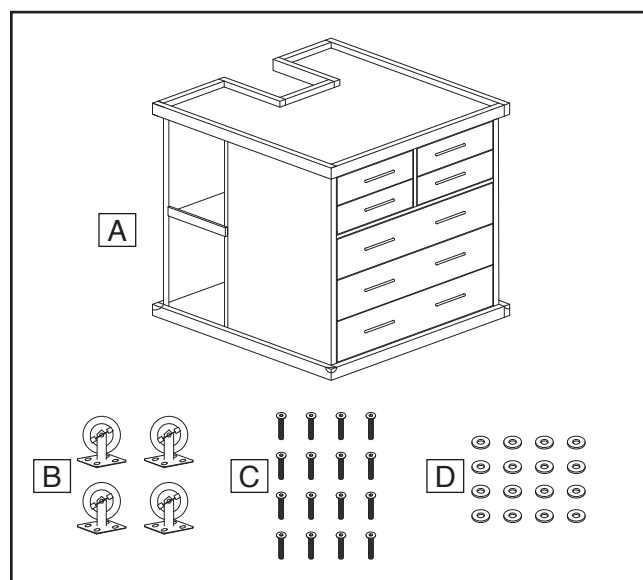
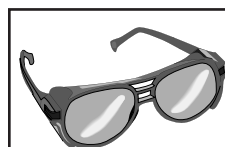


Figure 2. Inventory.



⚠ WARNING

Wear safety glasses during the entire setup process!

Assembly

Items Needed	Qty
Safety Glasses (for each person)	1 Pr.
Assistant	1
Hex Wrench 4mm	1
Mounting Hardware	As Needed

COPYRIGHT © MARCH, 2024 BY GRIZZLY INDUSTRIAL, INC.
NO PORTION OF THIS MANUAL MAY BE REPRODUCED IN ANY SHAPE
OR FORM WITHOUT THE WRITTEN APPROVAL OF GRIZZLY INDUSTRIAL, INC.
(FOR MODELS MFD. SINCE 03/24) #JA23106 PRINTED IN CHINA

V1.03.24

Keep for Future Reference

To assemble cabinet:

1. With aid of assistant, carefully turn cabinet upside down.

Note: To avoid damaging wood finish, place cabinet on a piece of cardboard or other non-scratching surface.

2. Attach (4) locking swivel casters to cabinet base with (16) $\frac{1}{4}$ "-20 x $\frac{3}{4}$ " flat head cap screws and (16) $\frac{1}{4}$ " flat washers, as shown in **Figure 3**.

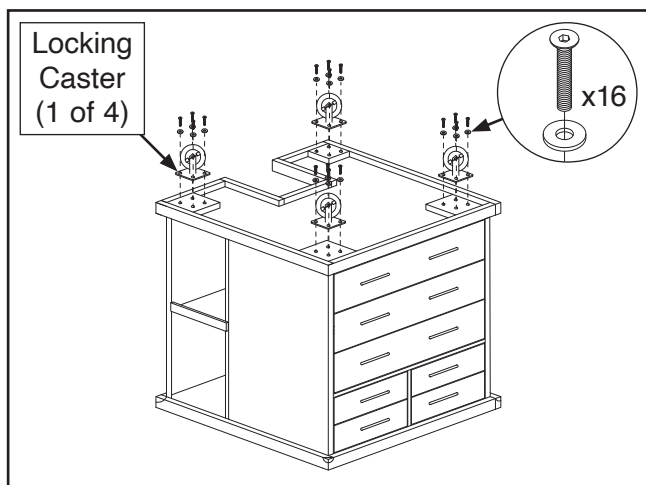


Figure 3. Attaching locking swivel casters.

3. With help of assistant, return cabinet to upright position and lock caster wheels.
4. Complete cabinet assembly should resemble **Figure 4**.

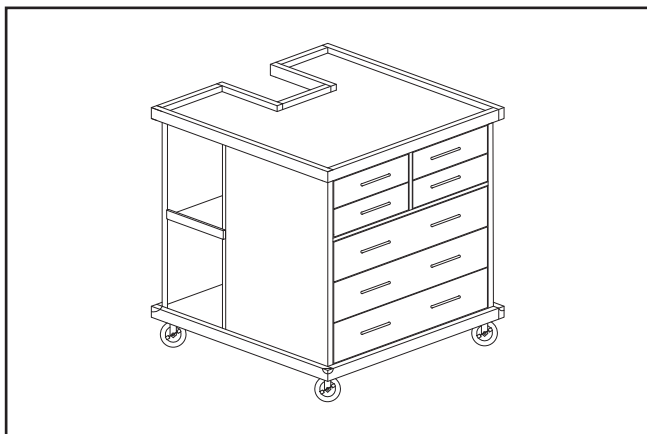


Figure 4. Complete cabinet assembly.

Mounting Drill Press

If the base of your drill press has mounting holes, it can be fastened to the cabinet to prevent the machine from moving during operation and causing accidental injury or damage.

The strongest mounting option is a "Through Mount" (see **Figure 5**) where holes are drilled all the way through the work surface—and hex bolts, washers, and hex nuts are used to secure the machine in place.

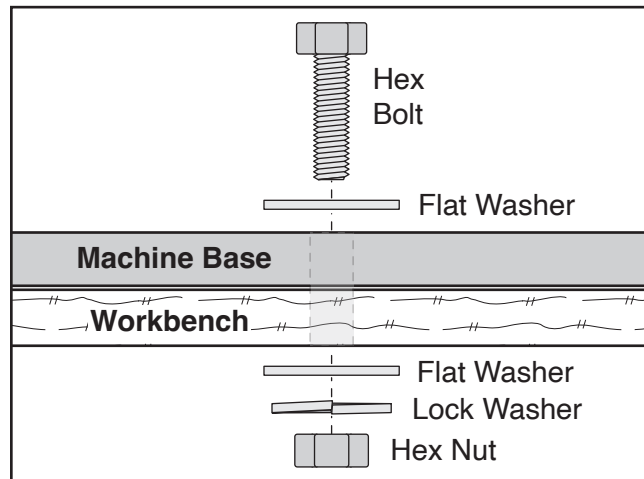


Figure 5. "Through Mount" setup.

Another option is a "direct mount" (see **Figure 6**) where the machine is secured directly to the workbench with lag screws and washers.

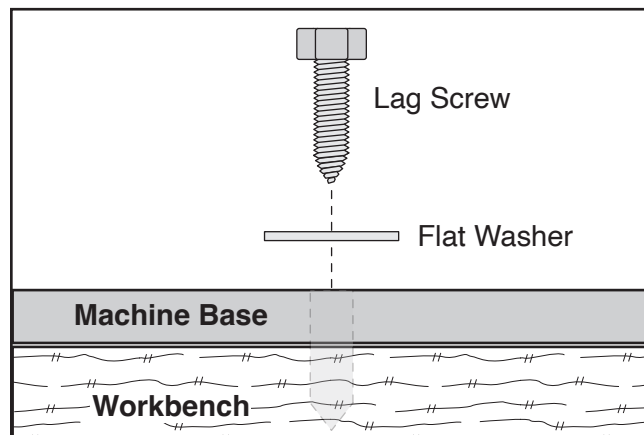


Figure 6. "Direct Mount" setup.

