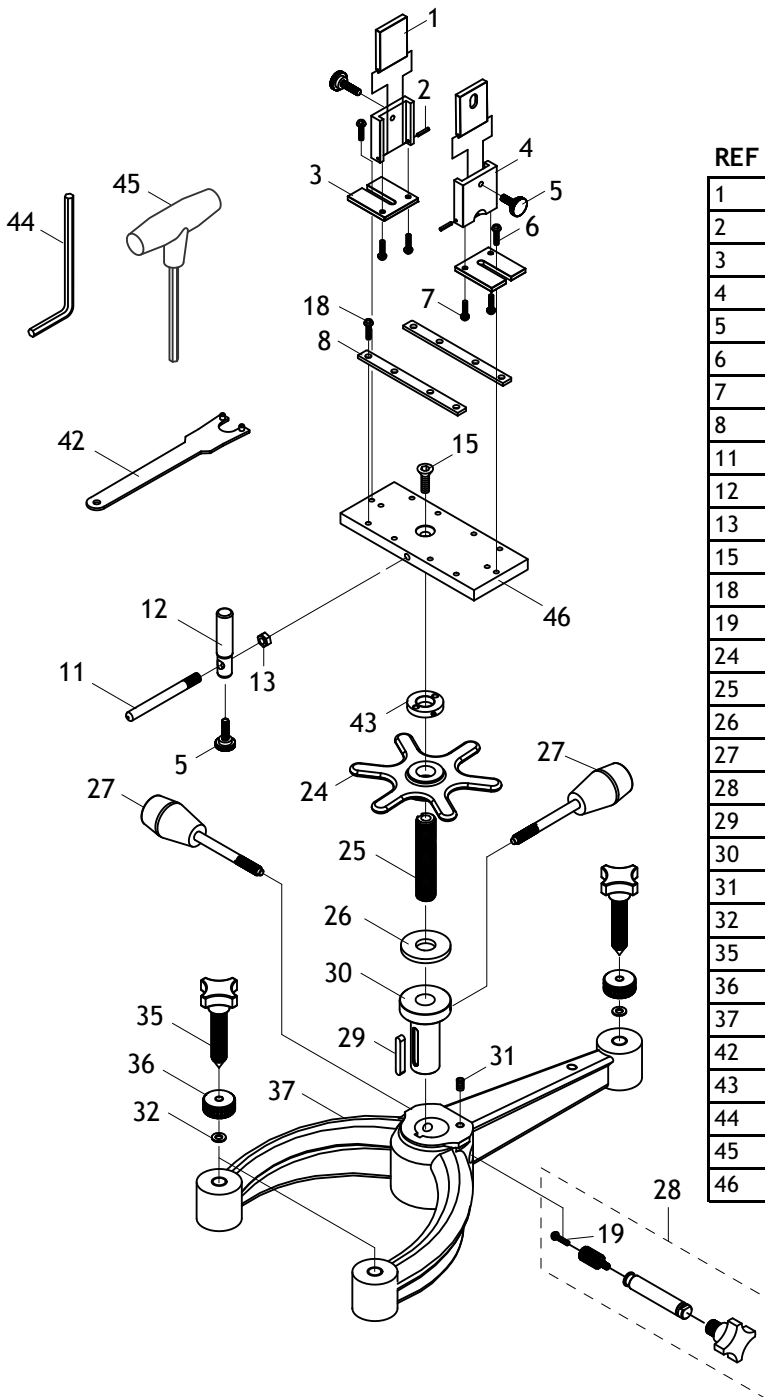


BE1129 Parts Breakdown



REF	PART #	DESCRIPTION
1	PBE1129001	CLAMP SHOE
2	PBE1129002	ROLL PIN 3 X 50
3	PBE1129003	ADJUSTING PLATE
4	PBE1129004	CLAMP SUPPORT
5	PBE1129005	THUMB KNOB 1/4-28 X 1-1/4
6	PBE1129006	BUTTON HD CAP SCR 1/4-20 X 1/2
7	PBE1129007	FLAT HD SCR 10-24 X 1/2
8	PBE1129008	CLAMP STRAP
11	PBE1129011	STOP POST RAIL
12	PBE1129012	STOP POST
13	PBE1129013	HEX NUT 5/16-18
15	PBE1129015	BEVEL HEAD SCREW 3/8-16 X 3/4
18	PBE1129018	BUTTON HD CAP SCR 1/4-20 X 3/4
19	PBE1129019	BUTTON HD CAP SCR 10-24 X 1/2
24	PBE1129024	MARINER WHEEL
25	PBE1129025	ELEVATION SCREW 3/4-10
26	PBE1129026	TEFLON THRUST BEARING
27	PBE1129027	LOCK KNOB 3/8-16
28	PBE1129028	ELEVATION KNOB & PINION ASSY
29	PBE1129029	KEY 1/4 X 1/4 X 1-3/4
30	PBE1129030	ELEVATION RACK
31	PBE1129031	BALL-PT SET SCREW 1/4-20 X 1/2
32	PBE1129032	TEFLON WASHER 3/8
35	PBE1129035	LEVELING SCREW 3/8 -16 X 3
36	PBE1129036	LOCKING THUMB WHEEL 3/8-16
37	PBE1129037	SLINGSHOT BASE, ALUMINUM
42	PBE1129042	SPANNER WRENCH
43	PBE1129043	KNURLED SPANNER NUT
44	PBE1129044	HEX WRENCH 4MM
45	PBE1129045	HEX T-WRENCH 5MM
46	PBE1129046	SLIDE