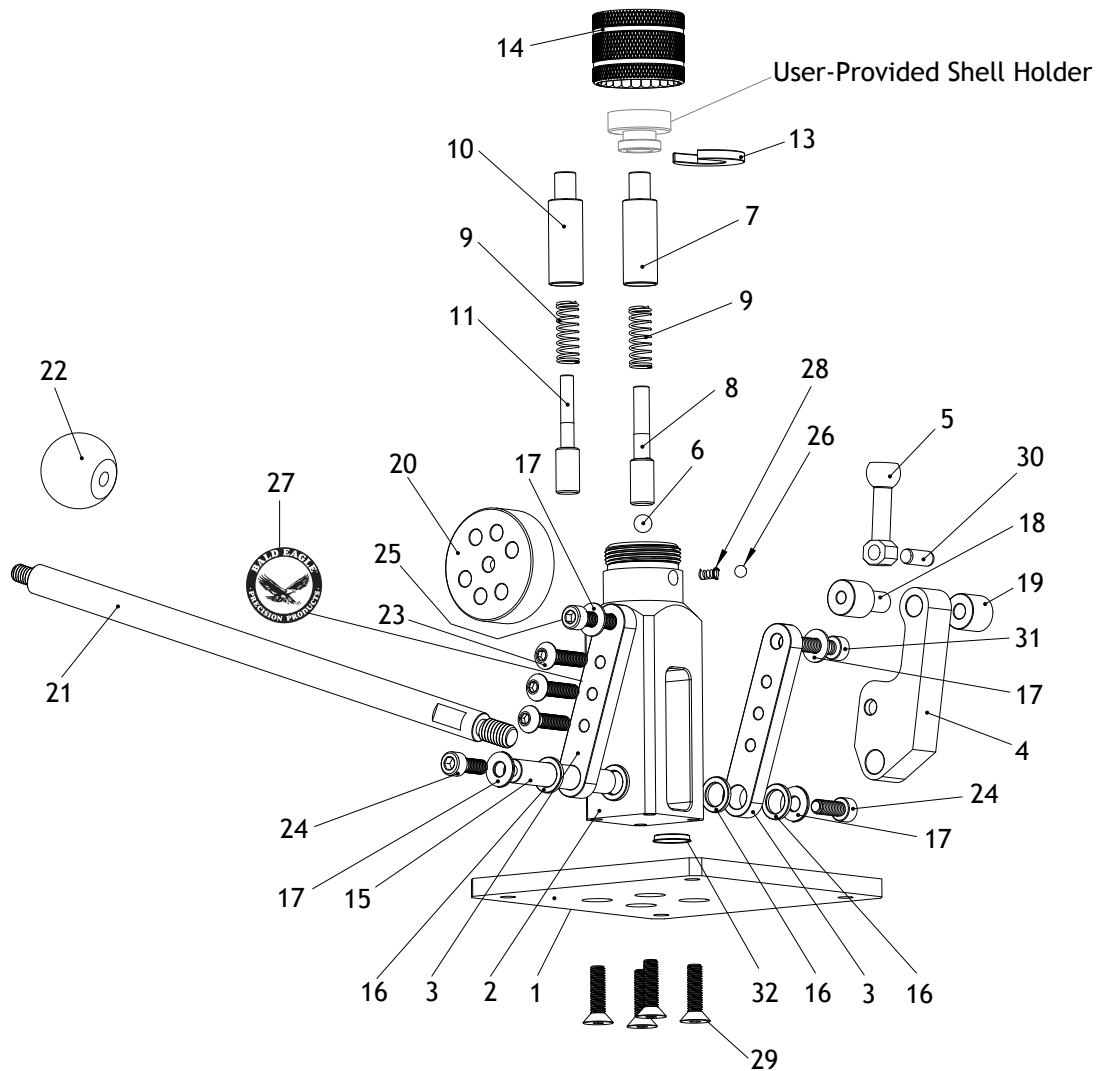


# BE1151 Parts Breakdown



REF PART #	DESCRIPTION
1	PBE1151001 BASEPLATE
2	PBE1151002 MAIN BODY
3	PBE1151003 LEVER ARM
4	PBE1151004 MAIN LEVER
5	PBE1151005 BALL-END LINK
6	PBE1151006 STEEL BALL 6MM
7	PBE1151007 LARGE PRIMER SLEEVE 0.210"
8	PBE1151008 LARGE PRIMER ROD
9	PBE1151009 PRIMER ROD SPRING
10	PBE1151010 SMALL PRIMER SLEEVE
11	PBE1151011 SMALL PRIMER ROD 0.175"
13	PBE1151013 C-WASHER
14	PBE1151014 TOP CAP
15	PBE1151015 LOWER AXLE
16	PBE1151016 FLAT WASHER PLASTIC
17	PBE1151017 FLAT WASHER 5MM STAINLESS STEEL

REF PART #	DESCRIPTION
18	PBE1151018 UPPER AXLE A BRASS
19	PBE1151019 UPPER AXLE B BRASS
20	PBE1151020 HUB
21	PBE1151021 HANDLE LEVER M6-1 X 220
22	PBE1151022 BALL KNOB M6-1
23	PBE1151023 BUTTON HD CAP SCR 10-32 X 3/4
24	PBE1151024 CAP SCREW 10-32 X 1/2
25	PBE1151025 CAP SCREW 10-32 X 3/4
26	PBE1151026 STEEL BALL 4MM
27	PBE1151027 BALD EAGLE LABEL
28	PBE1151028 BALL PLUNGER SPRING
29	PBE1151029 FLAT HD CAP SCR 10-32 X 1/2
30	PBE1151030 DOWEL PIN 5 X 12MM
31	PBE1151031 CAP SCREW 10-32 X 1
32	PBE1151032 RUBBER GROMMET