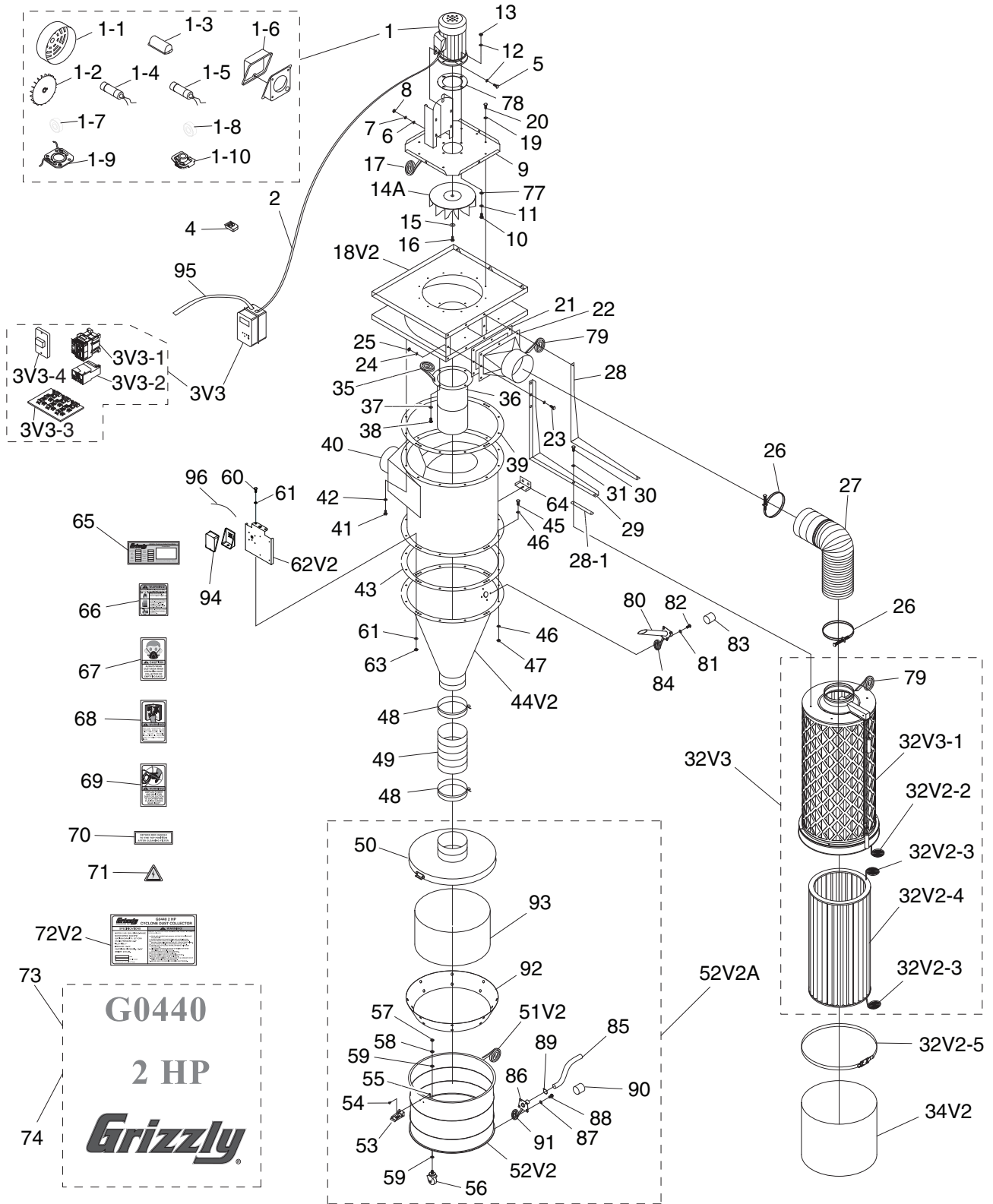


# SECTION 10: PARTS

## G0440 Main



**G0440**  
**2 HP**  
**Grizzly**



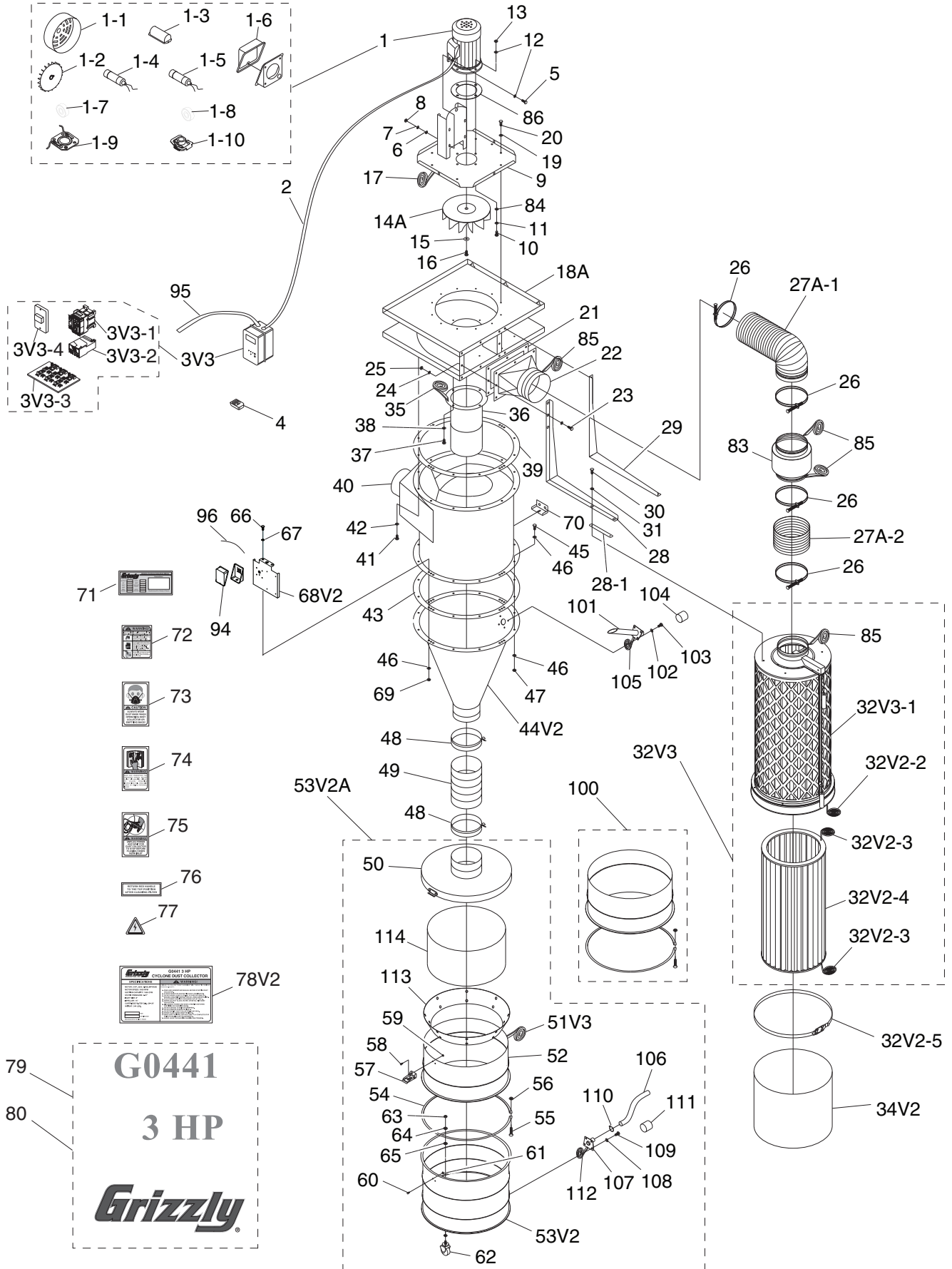
# G0440 Parts List

REF	PART #	DESCRIPTION
1	P0440001	MOTOR 2HP 220V 1-PH
1-1	P0440001-1	MOTOR FAN COVER
1-2	P0440001-2	MOTOR FAN
1-3	P0440001-3	CAPACITOR COVER
1-4	P0440001-4	S CAPACITOR 300M 125V 1-3/4 X 3-3/8
1-5	P0440001-5	R CAPACITOR 50M 250V 1-5/8 X 3-1/2
1-6	P0440001-6	JUNCTION BOX
1-7	P0440001-7	BALL BEARING 6205ZZ
1-8	P0440001-8	BALL BEARING 6203ZZ
1-9	P0440001-9	CONTACT PLATE
1-10	P0440001-10	CENTRIFUGAL SWITCH 3450
2	P0440002	MOTOR CORD 12G 3C
3V3	P0440003V3	REMOTE MAG SWITCH 220V V3.01.12
3V3-1	P0440003V3-1	CONTACTOR NHD C-12D 220V
3V3-2	P0440003V3-2	OL RELAY NHD NTH-14 11-14A
3V3-3	P0440003V3-3	CIRCUIT BOARD 220V W/TRANSFORMER
3V3-4	P0440003V3-4	ON/OFF SWITCH 110V/220V
4	P0440004	REMOTE CONTROLLER
5	P0440005	HEX BOLT 3/8-16 X 1-1/2
6	P0440006	FLAT WASHER 3/8
7	P0440007	LOCK WASHER 3/8
8	P0440008	HEX NUT 3/8-16
9	P0440009	BLOWER COVER
10	P0440010	HEX BOLT 3/8-16 X 1
11	P0440011	FENDER WASHER 3/8
12	P0440012	LOCK WASHER 3/8
13	P0440013	HEX NUT 3/8-16
14A	P0440014A	IMPELLER 14-1/2" V2.02.06
15	P0440015	IMPELLER FENDER WASHER 3/8
16	P0440016	HEX BOLT 3/8-16 X 1 LH
17	P0440017	FOAM TAPE 3 X 6 X 1600MM
18V2	P0440018V2	BLOWER HOUSING 14.5" IMP V2.02.06
19	P0440019	FLAT WASHER 5/16
20	P0440020	HEX BOLT 5/16-18 X 3/4
21	P0440021	OUTLET GASKET 306 X 226MM
22	P0440022	OUTLET PORT
23	P0440023	HEX BOLT 5/16-18 X 1
24	P0440024	FLAT WASHER 5/16
25	P0440025	HEX NUT 5/16-18
26	P0440026	HOSE CLAMP 7"
27	P0440027	GRAY FLEX PIPE 7" X 800MM
28	P0440028	FILTER L-BRACE (LH)
28-1	P0440028-1	BRACE GASKET 155 X 37MM
29	P0440029	FILTER L-BRACE (RH)
30	P0440030	HEX BOLT 5/16-18 X 3/4
31	P0440031	FLAT WASHER 5/16
32V3	P0440032V3	CANISTER ASSEMBLY (BEIGE) V3.07.12
32V3-1	P0440032V3-1	CANISTER CAGE ASSY (BEIGE) V3.07.12
32V2-2	P0440032V2-2	FOAM TAPE 3 X 25 X 1400MM V2.11.09
32V2-3	P0440032V2-3	FOAM TAPE 3 X 35 X 1255MM V2.11.09
32V2-4	P0440032V2-4	CAN FILTER 386MM W/FOAM TAPE V2.11.09
32V2-5	P0440032V2-5	BAG CLAMP 445MM V2.11.09
34V2	P0440034V2	PLASTIC BAG 470 X 600MM V2.11.09
35	P0440035	FOAM TAPE 3 X 6 X 1600MM
36	P0440036	INTAKE CYLINDER 10"
37	P0440037	FLAT WASHER 5/16
38	P0440038	HEX BOLT 5/16-18 X 3/4

REF	PART #	DESCRIPTION
39	P0440039	BARREL GASKET 584MM DIA.
40	P0440040	INTAKE BARREL 20"
41	P0440041	HEX BOLT 5/16-18 X 3/4
42	P0440042	FLAT WASHER 5/16
43	P0440043	BARREL GASKET 584MM DIA.
44V2	P0440044V2	CYCLONE FUNNEL 20" V2.08.10
45	P0440045	HEX BOLT 5/16-18 X 1
46	P0440046	FLAT WASHER 5/16
47	P0440047	HEX NUT 5/16-18
48	P0440048	HOSE CLAMP 9"
49	P0440049	CLEAR FLEX PIPE 9" x 200MM
50	P0440050	COLLECTION DRUM LID V2.08.06
51V2	P0440051V2	DRUM SEAL TYPE-T 2.1M V2.11.09
52V2A	P0440052V2A	COLLECTION DRUM ASSY 35GAL V2.08.10
52V2	P0440052V2	COLLECTION DRUM 35GAL V2.08.10
53	P0440053	DRUM LID LATCH ASSEMBLY
54	P0440054	PHLP HD SCR 10-24 X 3/8
55	P0440055	HEX NUT 10-24
56	P0440056	CASTER 2"
57	P0440057	HEX NUT 3/8-16
58	P0440058	LOCK WASHER 3/8
59	P0440059	FLAT WASHER 3/8
60	P0440060	HEX BOLT 5/16-18 X 1
61	P0440061	FLAT WASHER 5/16
62V2	P0440062V2	SWITCH MOUNTING BRACKET V2.01.12
63	P0440063	HEX NUT 5/16-18
64	P0440064	WALL MOUNTING BRACE
65	P0440065	MOTOR SPEC LABEL
66	P0440066	MOTOR WARNING LABEL
67	P0440067	GLASSES/RESPIRATOR LABEL
68	P0440068	READ MANUAL LABEL
69	P0440069	HANDS/INLET LABEL
70	P0440070	RETURN RED HANDLE LABEL
71	P0440071	ELECTRICITY LABEL
72V2	P0440072V2	MACHINE ID LABEL CSA V2.01.12
73	P0440073	MODEL NO/HP/GRIZZLY LABEL (LARGE)
74	P0440074	MODEL NO/HP/GRIZZLY LABEL (SMALL)
77	P0440077	EXT TOOTH WASHER 3/8
78	P0440078	MOTOR MOUNT GASKET
79	P0440079	FOAM TAPE 3 X 15 X 600MM
80	P0440080	CYCLONE VACUUM TUBE
81	P0440081	FLAT WASHER 5/16
82	P0440082	HEX BOLT 5/16-18 X 3/4
83	P0440083	TUBE PLUG 1-1/4"
84	P0440084	FOAM TAPE 3 X 6 X 300MM
85	P0440085	VACUUM HOSE 1-1/4" X 98"
86	P0440086	COLLECTION DRUM VACUUM TUBE
87	P0440087	FLAT WASHER 5/16
88	P0440088	HEX BOLT 5/16-18 X 3/4
89	P0440089	HOSE CLAMP 1-1/4"
90	P0440090	TUBE PLUG 1-1/4"
91	P0440091	FOAM TAPE 3 X 6 X 300MM
92	P0440092	COLLECTION DRUM VACUUM RING
93	P0440093	DRUM COLLECTION BAG 640 X 1000MM
94	P0440094	JUNCTION BOX
95	P0440095	JUNCTION BOX CORD 12G 3C 12"
96	P0440096	GROUNDING WIRE 12G 6" (GREEN)



# G0441 Main



# G0441 Parts List

REF	PART #	DESCRIPTION
1	P0441001	MOTOR 3HP 220V 1-PH
1-1	P0441001-1	MOTOR FAN COVER
1-2	P0441001-2	MOTOR FAN
1-3	P0441001-3	CAPACITOR COVER
1-4	P0441001-4	S CAPACITOR 600M 125V 1-3/4 X 3-3/4
1-5	P0441001-5	R CAPACITOR 60M 300V 1-5/8 X 3-1/2
1-6	P0441001-6	JUNCTION BOX
1-7	P0441001-7	BALL BEARING 6205ZZ
1-8	P0441001-8	BALL BEARING 6203ZZ
1-9	P0441001-9	CONTACT PLATE
1-10	P0441001-10	CENTRIFUGAL SWITCH 3450
2	P0441002	MOTOR CORD 12G 3C
3V3	P0441003V3	REMOTE MAG SWITCH 220V V3.01.12
3V3-1	P0441003V3-1	CONTACTOR NHD C-18D 220V
3V3-2	P0441003V3-2	OL RELAY NHD NTH-25 21-25A
3V3-3	P0441003V3-3	CIRCUIT BOARD 220V W/TRANSFORMER
3V3-4	P0441003V3-4	ON/OFF SWITCH 110/220V
4	P0441004	REMOTE CONTROLLER
5	P0441005	HEX BOLT 3/8-16 X 1-1/2
6	P0441006	FLAT WASHER 3/8
7	P0441007	LOCK WASHER 3/8
8	P0441008	HEX NUT 3/8-16
9	P0441009	BLOWER COVER
10	P0441010	HEX BOLT 3/8-16 X 1-1/2
11	P0441011	FLAT WASHER 3/8
12	P0441012	LOCK WASHER 3/8
13	P0441013	HEX NUT 3/8-16
14A	P0441014A	IMPELLER 15-1/2" V2.02.06
15	P0441015	IMPELLER FENDER WASHER 3/8
16	P0441016	HEX BOLT 3/8-16 X 1 LH
17	P0441017	FOAM TAPE 3 X 6 X 1600MM
18A	P0441018A	BLOWER HOUSING 15-1/2" IMP V2.02.06
19	P0441019	FLAT WASHER 5/16
20	P0441020	HEX BOLT 5/16-18 X 3/4
21	P0441021	OUTLET GASKET 326 X 226MM
22	P0441022	OUTLET PORT
23	P0441023	HEX BOLT 5/16-18 X 1
24	P0441024	FLAT WASHER 5/16
25	P0441025	HEX NUT 5/16-18
26	P0441026	HOSE CLAMP 8"
27A-1	P0441027A-1	GREY FLEX PIPE 8" X 500MM V2.04.08
27A-2	P0441027A-2	GREY FLEX PIPE 8" X 120MM V2.04.08
28	P0441028	FILTER L-BRACE (RH)
28-1	P0441028-1	BRACE GASKET 240 X 32MM
29	P0441029	FILTER L-BRACE (LH)
30	P0441030	HEX BOLT 5/16-18 X 3/4
31	P0441031	FLAT WASHER 5/16
32V3	P0441032V3	CANISTER ASSEMBLY (BEIGE) V3.07.12
32V3-1	P0441032V3-1	CANISTER CAGE ASSY (BEIGE) V3.07.12
32V2-2	P0441032V2-2	FOAM TAPE 3 X 25 X 1400MM V2.11.09
32V2-3	P0441032V2-3	FOAM TAPE 3 X 35 X 1460MM V2.11.09
32V2-4	P0441032V2-4	CANISTER FILTER 486MM V2.11.09
32V2-5	P0441032V2-5	BAG CLAMP 545MM V2.11.09
34V2	P0441034V2	PLASTIC BAG 570 X 600MM V2.11.09
35	P0441035	FOAM TAPE 3 X 6 X 1600MM
36	P0441036	INTAKE CYLINDER 10"
37	P0441037	HEX BOLT 5/16-18 X 3/4
38	P0441038	FLAT WASHER 5/16
39	P0441039	BARREL GASKET 584MM DIA.
40	P0441040	INTAKE BARREL 20"
41	P0441041	HEX BOLT 5/16-18 X 3/4
42	P0441042	FLAT WASHER 5/16

REF	PART #	DESCRIPTION
43	P0441043	BARREL GASKET 584MM DIA.
44V2	P0441044V2	CYCLONE FUNNEL 20" V2.08.10
45	P0441045	HEX BOLT 5/16-18 X 1
46	P0441046	FLAT WASHER 5/16
47	P0441047	HEX NUT 5/16-18
48	P0441048	HOSE CLAMP 9"
49	P0441049	CLEAR FLEX PIPE 9" X 340MM
50	P0441050	COLLECTION DRUM LID V2.08.06
51V3	P0441051V3	DRUM SEAL TYPE-R 2M V3.01.12
52	P0441052	UPPER DRUM 25GAL
53V2A	P0441053V2A	COLLECTION DRUM ASSY 55GAL V2.11.09
53V2	P0441053V2	COLLECTION DRUM 35GAL V2.08.10
54	P0441054	DRUM CLAMP
55	P0441055	HEX BOLT 5/16-18 X 3
56	P0441056	HEX NUT 5/16-18
57	P0441057	DRUM LID LATCH ASSEMBLY
58	P0441058	PHLP HD SCR 10-24 X 3/8
59	P0441059	HEX NUT 10-24
60	P0441060	PHLP HD SCR 10-24 X 3/8
61	P0441061	HEX NUT 10-24
62	P0441062	CASTER 2"
63	P0441063	HEX NUT 3/8-16
64	P0441064	LOCK WASHER 3/8
65	P0441065	FLAT WASHER 3/8
66	P0441066	HEX BOLT 5/16-18 X 1
67	P0441067	FLAT WASHER 5/16
68V2	P0441068V2	SWITCH MOUNTING BRACKET V2.01.12
69	P0441069	HEX NUT 5/16-18
70	P0441070	WALL MOUNT BRACKET
71	P0441071	MOTOR SPEC LABEL
72	P0441072	MOTOR WARNING LABEL
73	P0441073	GLASSES/RESPIRATOR LABEL
74	P0441074	READ MANUAL LABEL
75	P0441075	HANDS/INLET LABEL
76	P0441076	RETURN RED HANDLE LABEL
77	P0441077	ELECTRICITY LABEL
78V2	P0441078V2	MACHINE ID LABEL CSA V2.01.12
79	P0441079	MODEL NO/HP/GRIZZLY LABEL (LARGE)
80	P0441080	MODEL NO/HP/GRIZZLY LABEL (SMALL)
83	P0441083	MUFFLER 8"
84	P0441084	EXT TOOTH WASHER 3/8
85	P0441085	FOAM TAPE 3 X 15 X 700MM
86	P0441086	MOTOR MOUNT GASKET
94	P0441094	JUNCTION BOX
95	P0441095	JUNCTION BOX CORD 12G 3C 12"
96	P0441096	GROUNDING WIRE 12G 6" (GREEN)
100	P0441100	COLLECTION DRUM EXT KIT
101	P0441101	CYCLONE VACUUM TUBE
102	P0441102	FLAT WASHER 5/16
103	P0441103	HEX BOLT 5/16-18 X 3/4
104	P0441104	TUBE PLUG 1-1/4"
105	P0441105	FOAM TAPE 3 X 6 X 300MM
106	P0441106	VACUUM HOSE 1-1/4" X 98"
107	P0441107	COLLECTION DRUM VACUUM TUBE
108	P0441108	FLAT WASHER 5/16
109	P0441109	HEX BOLT 5/16-18 X 3/4
110	P0441110	HOSE CLAMP 1-1/4"
111	P0441111	TUBE PLUG 1-1/4"
112	P0441112	FOAM TAPE 3 X 6 X 300MM
113	P0441113	COLLECTION DRUM VACUUM RING
114	P0441114	DRUM COLLECTION BAG 640 X 1200MM

