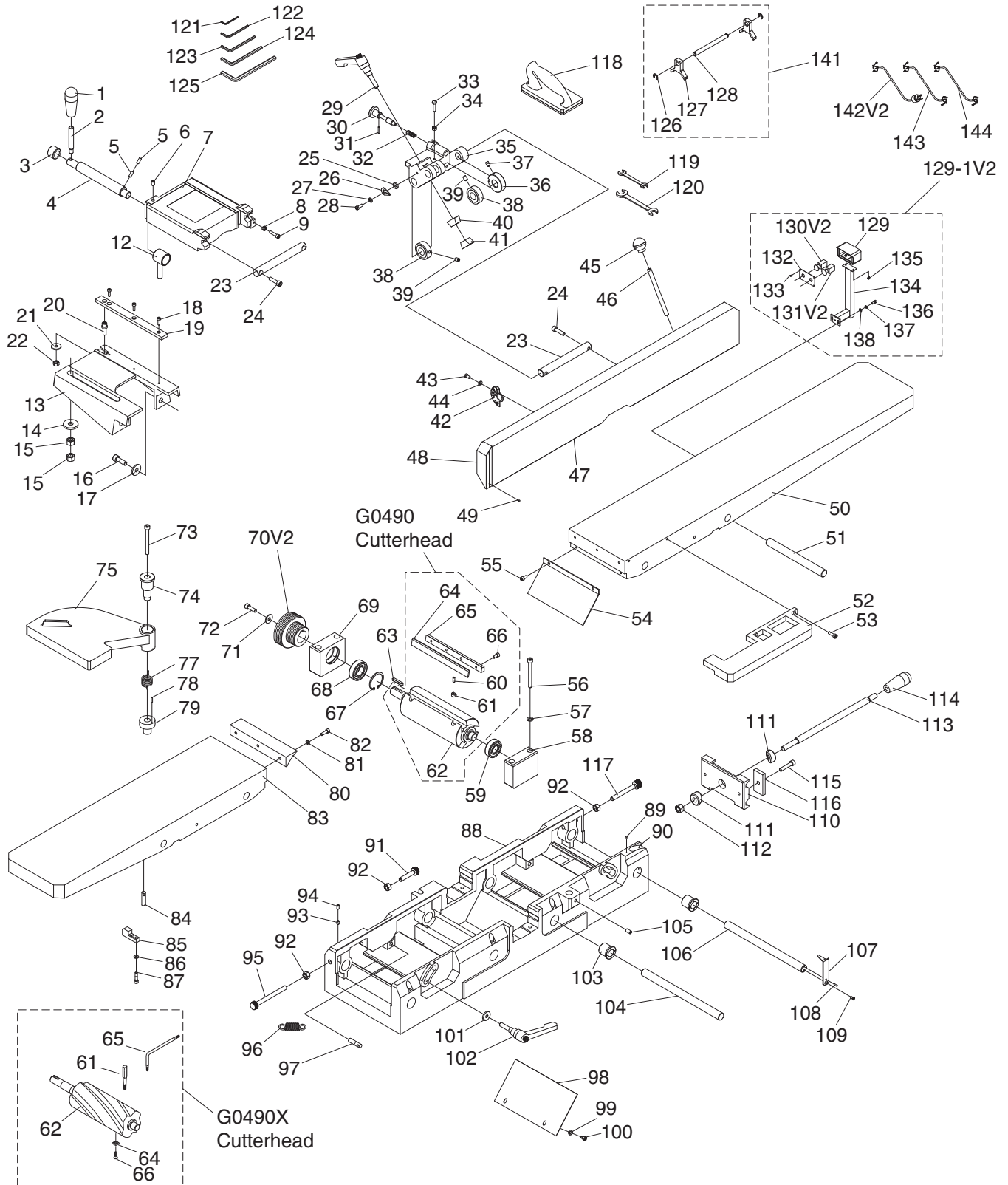


SECTION 9: PARTS

Jointer Breakdown



Jointer Parts List

REF	PART #	DESCRIPTION
1	P0490001	KNOB M12-1.75, OBLONG
2	P0490002	STUD-UDE M12-1.75 X 20, M10-1.5 X 15, 80L
3	P0490003	BUSHING
4	P0490004	ECCENTRIC SHAFT
5	P0490005	SET SCREW M6-1 X 16
6	P0490006	SET SCREW M8-1.25 X 12
7	P0490007	FENCE CARRIAGE
8	P0490008	HEX NUT M6-1
9	P0490009	HEX BOLT M6-1 X 25
12	P0490012	COLLAR
13	P0490013	FENCE SUPPORT
14	P0490014	FLAT WASHER 12MM
15	P0490015	HEX NUT M12-1.75
16	P0490016	CAP SCREW M10-1.5 X 30
17	P0490017	FLAT WASHER 10MM
18	P0490018	CAP SCREW M5-.8 X 16
19	P0490019	FENCE GIB
20	P0490020	ECCENTRIC SHAFT
21	P0490021	FLAT WASHER 8MM
22	P0490022	HEX NUT M8-1.25
23	P0490023	SHAFT W/2 HOLES
24	P0490024	CAP SCREW M8-1.25 X 30
25	P0490025	FLAT WASHER 6MM
26	P0490026	POINTER
27	P0490027	FLAT WASHER 6MM
28	P0490028	PHLP HD SCR M6-1 X 16
29	P0490029	ADJUSTABLE HANDLE M10-1.5 X 25
30	P0490030	INDEX PIN ASSEMBLY
31	P0490031	ROLL PIN 3 X 20
32	P0490032	COMPRESSION SPRING
33	P0490033	HEX BOLT M6-1 X 25
34	P0490034	HEX NUT M6-1
35	P0490035	SWIVEL
36	P0490036	LOCK COLLAR
37	P0490037	HEX BOLT M8-1.25 X 12
38	P0490038	LOCK COLLAR
39	P0490039	HEX BOLT M8-1.25 X 12
40	P0490040	CLAMP
41	P0490041	THREADED CLAMP
42	P0490042	TILT SCALE
43	P0490043	PHLP HD SCR M6-1 X 10
44	P0490044	FLAT WASHER 6MM
45	P0490045	KNOB M10-1.5, ROUND
46	P0490046	STUD-DE M10-1.5 X 130, 10
47	P0490047	FENCE
48	P0490048	SCALE
49	P0490049	RIVET 2 X 4MM NAMEPLATE, STEEL
50	P0490050	INFEED TABLE
51	P0490051	TABLE SHAFT 202MM
52	P0490052	EXTENSION TABLE
53	P0490053	CAP SCREW M6-1 X 20
54	P0490054	CHIP DEFLECTOR
55	P0490055	CAP SCREW M6-1 X 12

REF	PART #	DESCRIPTION
56	P0490056	CAP SCREW M8-1.25 X 80
57	P0490057	LOCK WASHER 8MM
58	P0490058	FRONT BEARING PILLOW BLOCK
59	P0490059	BALL BEARING 6004-2RS
63	P0490063	KEY 6 X 6 X 35
67	P0490067	INT RETAINING RING 47MM
68	P0490068	BALL BEARING 6005-2RS
69	P0490069	REAR BEARING PILLOW BLOCK
70V2	P0490070V2	CUTTERHEAD PULLEY ALUM V2.03.09
71	P0490071	CUTTERHEAD PULLEY WASHER
72	P0490072	CAP SCREW M8-1.25 X 25
73	P0490073	CAP SCREW M8-1.25 X 80
74	P0490074	GUARD CLAMP
75	P0490075	CUTTERHEAD GUARD
77	P0490077	TORSION SPRING
78	P0490078	ROLL PIN 3 X 16
79	P0490079	SPRING RETAINER
80	P0490080	OUTFEED TABLE LIP
81	P0490081	FLAT WASHER 6MM
82	P0490082	CAP SCREW M6-1 X 20
83	P0490083	OUTFEED TABLE
84	P0490084	SLOTTED PIN W/HOLE
85	P0490085	BUMPER
86	P0490086	LOCK WASHER 6MM
87	P0490087	CAP SCREW M6-1 X 25
88	P0490088	TABLE BASE
89	P0490089	RIVET 2 X 4MM NAMEPLATE, STEEL
90	P0490090	HEIGHT SCALE
91	P0490091	ADJUSTING SCREW M10-1.5 X 50
92	P0490092	HEX NUT M10-1.5
93	P0490093	SET SCREW M6-1 X 10
94	P0490094	SET SCREW M6-1 X 10 CONE-PT
95	P0490095	ADJUSTING SCREW M10-1.5 X 110
96	P0490096	EXTENSION SPRING
97	P0490097	SLOTTED PIN W/HOLE
98	P0490098	CHIP BREAKER
99	P0490099	FLAT WASHER 6MM
100	P0490100	HEX BOLT M6-1 X 12
101	P0490101	FLAT WASHER 8MM
102	P0490102	ADJUSTABLE HANDLE M8-1.25 X 30
103	P0490103	ECCENTRIC BUSHING
104	P0490104	TABLE SHAFT 281MM
105	P0490105	SET SCREW M8-1.25 X 16
106	P0490106	TABLE SHAFT 281MM
107	P0490107	POINTER
108	P0490108	ROLL PIN 3 X 10
109	P0490109	FLAT HD SCR M4-.7 X 10
110	P0490110	PIVOT BRACKET
111	P0490111	ADJUSTING BLOCK
112	P0490112	HEX NUT M12-1.75
113	P0490113	LEVER
114	P0490114	KNOB M12-1.75, OBLONG
115	P0490115	CAP SCREW M8-1.25 X 40



Jointer Parts List

REF	PART #	DESCRIPTION
116	P0490116	CLAMP PLATE
117	P0490117	MEDIUM ADJUSTING SCREW
118	P0490118	PUSH BLOCK
119	P0490119	WRENCH 8 X 10MM OPEN-ENDS
120	P0490120	WRENCH 12 X 14MM OPEN-ENDS
121	P0490121	HEX WRENCH 2.5MM
122	P0490122	HEX WRENCH 4MM
123	P0490123	HEX WRENCH 5MM
124	P0490124	HEX WRENCH 6MM
125	P0490125	HEX WRENCH 8MM
126	P0490126	EXT RETAINING RING 8MM
127	P0490127	KNIFE JIG FOOT 1-PC
128	P0490128	KNIFE JIG ROD
129	P0490129	CONTROL PANEL BOX

REF	PART #	DESCRIPTION
129-1V2	P0490129-1V2	CONTROL PANEL PEDESTAL ASSY V2.01.11
130V2	P0490130V2	E-STOP BUTTON NHD NLB22-R 22MM V2.01.11
131V2	P0490131V2	START BUTTON NHD NLB22-E 22MM V2.01.11
132	P0490132	CONTROL PANEL
133	P0490133	TAP SCREW M4 X 8
134	P0490134	CONTROL PEDESTAL
135	P0490135	FLANGE SCREW M6-1 X 12
136	P0490136	CAP SCREW M10-1.5 X 25
137	P0490137	LOCK WASHER 10MM
138	P0490138	FLAT WASHER 10MM
141	P0490141	KNIFE SETTING JIG ASSEMBLY
142V2	P0490142V2	POWER CORD 12G 3W 72" 6-20P V2.08.12
143	P0490143	MOTOR CORD
144	P0490144	CONTROL PANEL CORD

G0490 Cutterhead Parts List

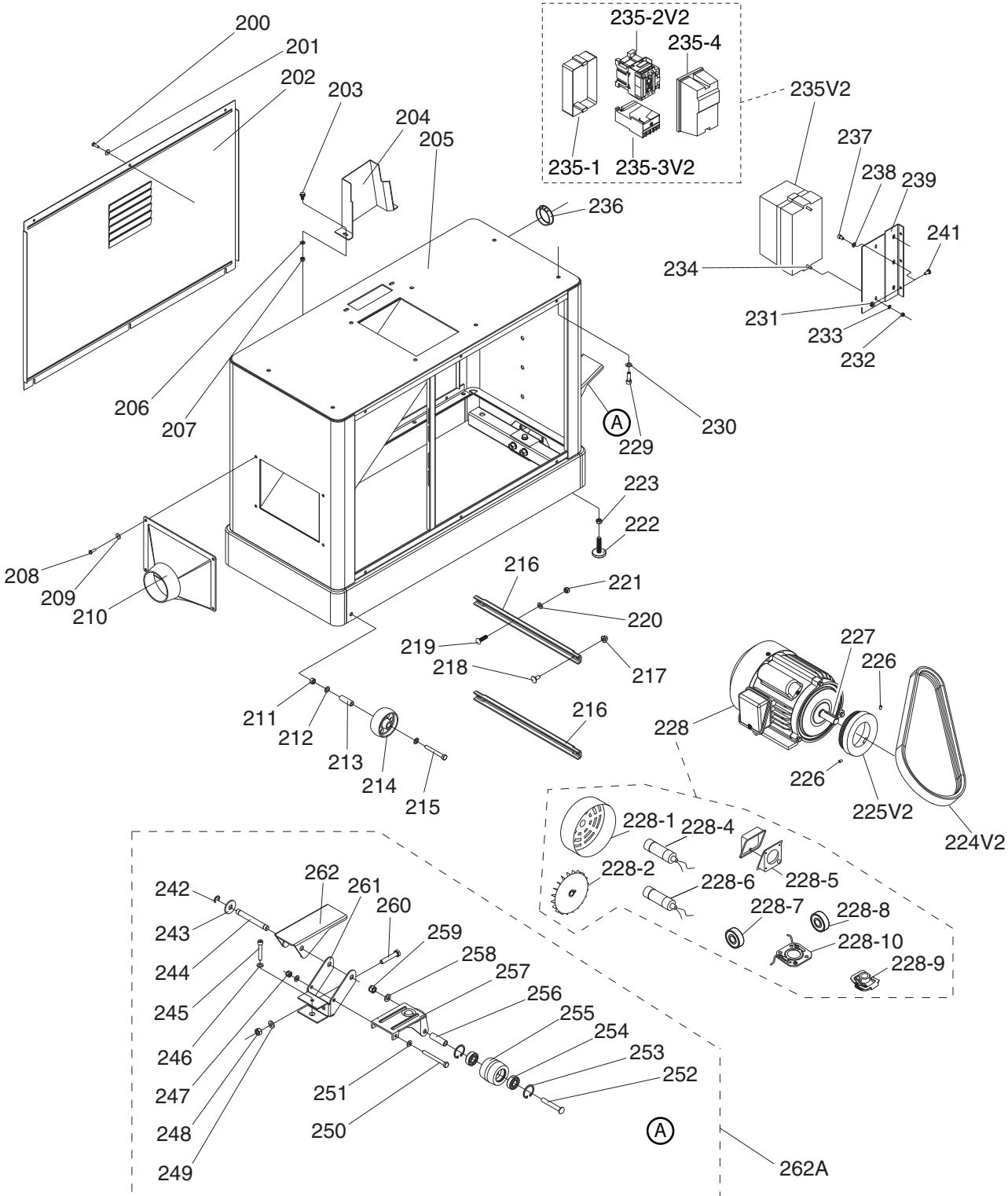
REF	PART #	DESCRIPTION
60	P0490060	SET SCREW M5-.8 X 16
61	P0490061	KNIFE LIFTER
62	P0490062	CUTTERHEAD 8" 4-KNIFE
64	P0490064	KNIVES 8" X 3/4" X 1/8" 4-PC SET
65	P0490065	KNIFE GIB
66	P0490066	KNIFE GIB SCREW

G0490X Cutterhead Parts List

REF	PART #	DESCRIPTION
61	P0490X061	DRIVER BIT TORX T20
62	P0490X062	SPIRAL CUTTERHEAD 8"
64	P0490X064	INDEXABLE INSERT 14 X 14 X 2 10-PK
65	P0490X065	L-WRENCH TORX T20
66	P0490X066	FLAT HD TORX T20 M6-1 X 15



Stand Breakdown



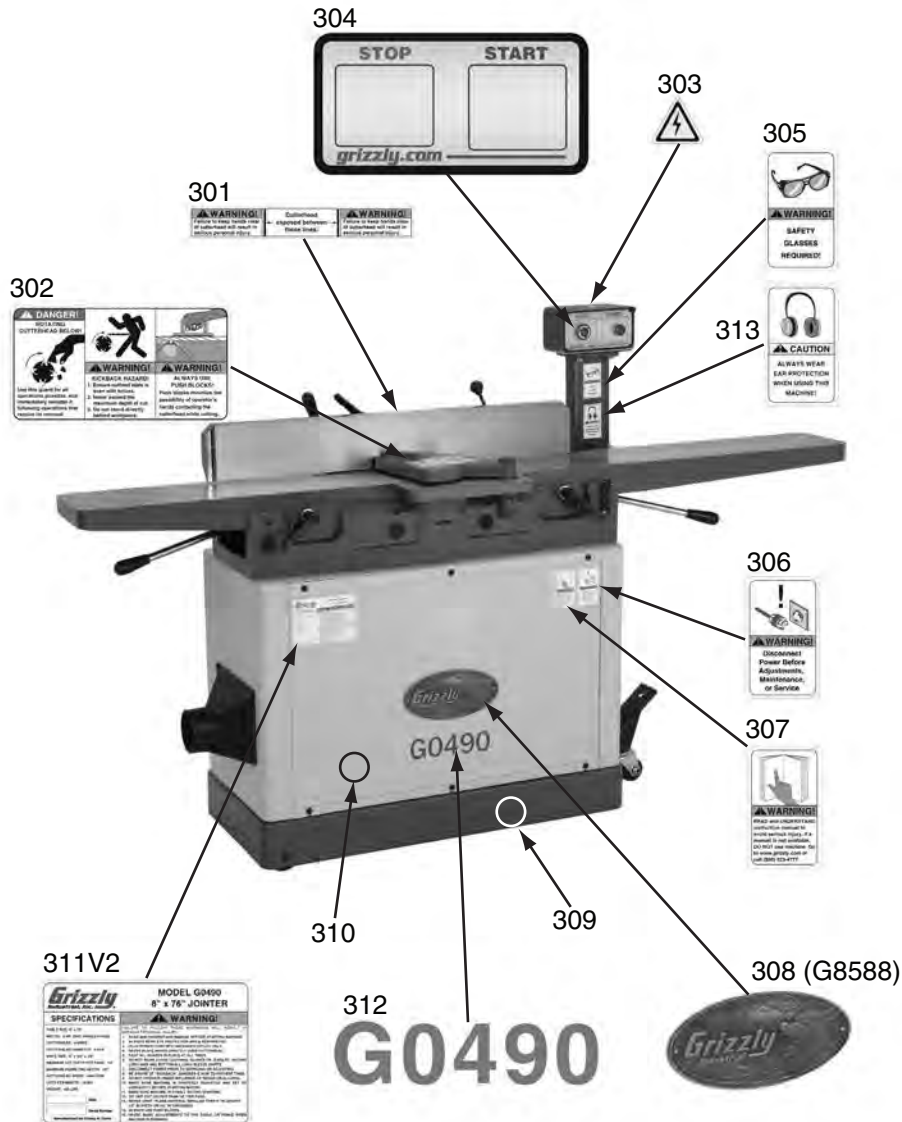
Stand Parts List

REF	PART #	DESCRIPTION
200	P0490200	PHLP HD SCR M5-.8 X 16
201	P0490201	FLAT WASHER 5MM
202	P0490202	REAR PANEL
203	P0490203	FLANGE SCREW M6-1 X 12
204	P0490204	BELT GUARD
205	P0490205	STAND
206	P0490206	FLAT WASHER 6MM
207	P0490207	HEX NUT M6-1
208	P0490208	PHLP HD SCR M5-.8 X 16
209	P0490209	FLAT WASHER 5MM
210	P0490210	DUST CHUTE
211	P0490211	HEX NUT M8-1.25
212	P0490212	FLAT WASHER 8MM
213	P0490213	SLEEVE
214	P0490214	UNIVERSAL WHEEL 78MM DIA
215	P0490215	HEX BOLT M8-1.25 X 65
216	P0490216	MOTOR BRACKET
217	P0490217	FLANGE NUT 5/16-18
218	P0490218	CARRIAGE BOLT 5/16-18 X 3/4
219	P0490219	CARRIAGE BOLT 5/16-18 X 1-1/4
220	P0490220	FLAT WASHER 5/16
221	P0490221	HEX NUT 5/16-18
222	P0490222	ADJUSTABLE FOOT 3/8-16 X 1-3/4
223	P0490223	HEX NUT 3/8-16
224V2	P0490224V2	POLY V-BELT 8PK-1172 V2.03.09
225V2	P0490225V2	ALUMINIUM MOTOR PULLEY V2.03.09
226	P0490226	SET SCREW M6-1 X 6
227	P0490227	KEY 5 X 5 X 30
228	P0490228	MOTOR 3HP 240V 1-PH
228-1	P0490228-1	MOTOR FAN COVER
228-2	P0490228-2	MOTOR FAN
228-4	P0490228-4	S CAPACITOR 200M 250V 1-3/4 X 3-1/4
228-5	P0490228-5	JUNCTION BOX
228-6	P0490228-6	R CAPACITOR 30M 450V
228-7	P0490228-7	BALL BEARING 6204ZZ
228-8	P0490228-8	BALL BEARING 6203ZZ
228-9	P0490228-9	CENT SWITCH 5/8-3450
228-10	P0490228-10	CONTACT PLATE

REF	PART #	DESCRIPTION
229	P0490229	CAP SCREW M8-1.25 X 25
230	P0490230	LOCK WASHER 8MM
231	P0490231	HEX NUT M6-1
232	P0490232	HEX NUT M5-.8
233	P0490233	FLAT WASHER 5MM
234	P0490234	PHLP HD SCR M5-.8 X 20
235V2	P0490235V2	MAG SWITCH NHD 3HP 230V V2.01.11
235-1	P0490235-1	REAR MAG SWITCH COVER
235-2V2	P0490235-2V2	CONTACTOR NHD C-09D 230V V2.07.12
235-3V2	P0490235-3V2	OL RELAY NHD NTH-17 14-17A V2.07.12
235-4	P0490235-4	FRONT MAG SWITCH COVER
236	P0490236	CORD GROMMET
237	P0490237	CAP SCREW M6-1 X 10
238	P0490238	FLAT WASHER 6MM
239	P0490239	SWITCH MOUNTING PLATE
241	P0490241	PHLP HD SCR M6-1 X 12
242	P0490242	EXT RETAINING RING 9MM
243	P0490243	FLAT WASHER 12MM
244	P0490244	CAPTIVE PIN
245	P0490245	HEX BOLT M8-1.25 X 50
246	P0490246	FLAT WASHER 8MM
247	P0490247	HEX NUT M8-1.25
248	P0490248	HEX NUT M10-1.5
249	P0490249	FLAT WASHER 10MM
250	P0490250	HEX BOLT M8-1.25 X 100
251	P0490251	FLAT WASHER 8MM
252	P0490252	TROLLEY WHEEL AXLE
253	P0490253	INT RETAINING RING 35MM
254	P0490254	BALL BEARING 6202-2RS
255	P0490255	TROLLEY WHEEL
256	P0490256	TROLLEY WHEEL SLEEVE
257	P0490257	TROLLEY UNIVERSAL KIT
258	P0490258	FLAT WASHER 10MM
259	P0490259	LOCK NUT M12-1.75
260	P0490260	HEX BOLT M10-1.5 X 55
261	P0490261	PEDAL BRACKET
262	P0490262	PEDAL
262A	P0490262A	PEDAL ASSEMBLY



Labels



REF	PART #	DESCRIPTION
301	P0490301	FENCE/CUTTERHEAD LABEL
302	P0490302	CUTTERHEAD GUARD LABEL
303	P0490303	ELECTRICITY LABEL
304	P0490304	CONTROL PANEL FACE
305	P0490305	SAFETY GLASSES LABEL
306	P0490306	DISCONNECT POWER LABEL
307	P0490307	READ MANUAL LABEL
308	P0490308	GRIZZLY NAMEPLATE

REF	PART #	DESCRIPTION
309	P0490309	GRIZZLY GREEN TOUCH-UP PAINT
310	P0490310	GRIZZLY PUTTY TOUCH-UP PAINT
311V2	P0490311V2	MACHINE ID LABEL CSA V2.08.12 (G0490)
311V2	P0490X311V2	MACHINE ID LABEL CSA V2.08.12 (G0490X)
312	P0490312	MODEL NUMBER LABEL (G0490)
312	P0490X312	MODEL NUMBER LABEL (G0490X)
313	P0490313	HEARING PROTECTION LABEL

WARNING

Safety labels warn about machine hazards and ways to prevent injury. The owner of this machine **MUST** maintain the original location and readability of the labels on the machine. If any label is removed or becomes unreadable, **REPLACE** that label before using the machine again. Contact Grizzly at (800) 523-4777 or www.grizzly.com to order new labels.

