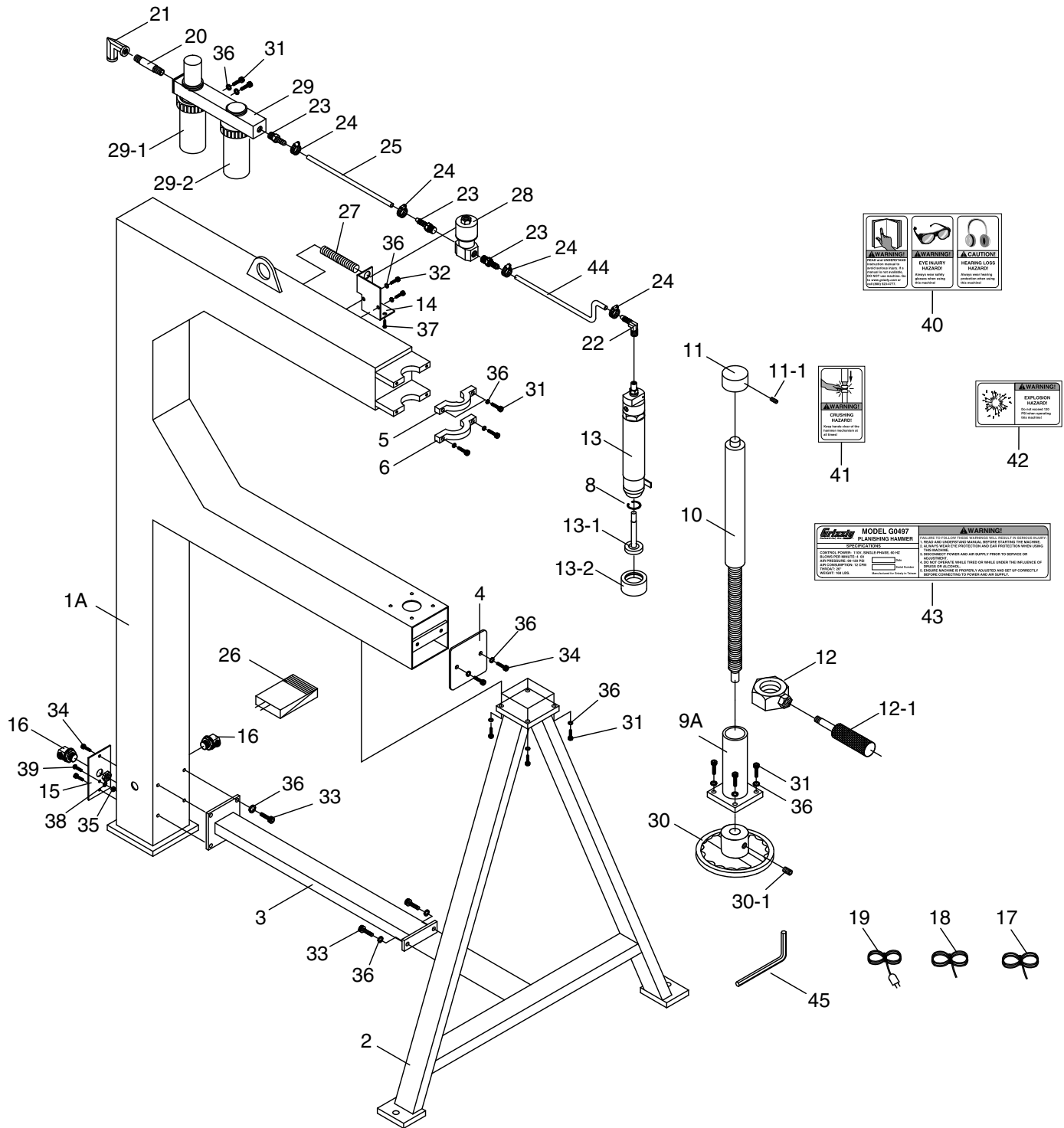


G0497 Parts Breakdown



G0497 Parts List

| REF | PART # | DESCRIPTION |
|------|------------|-----------------------------|
| 1A | P0497001A | MAIN HAMMER FRAME-N/S 1/07 |
| 2 | P0497002 | SUPPORT BRACKET |
| 3 | P0497003 | BRACE |
| 4 | P0497004 | END COVER |
| 5 | P0497005 | UPPER HAMMER CLAMP |
| 6 | P0497006 | LOWER HAMMER CLAMP |
| 8 | PR21M | INT RETAINING RING 35MM |
| 9A | P0497009A | ANVIL BASE-N/S 1/07 |
| 10 | P0497010 | ANVIL HEIGHT SCREW 1-8 x 11 |
| 11 | P0497011 | LOWER ANVIL |
| 11-1 | PSS07 | SET SCREW 1/4-20 x 1/2 |
| 12 | P0497012 | COMBO JAM NUT 1-8 / 1/2-12 |
| 12-1 | P0497012-1 | LOCK HANDLE 1/2-12 X 5/16 |
| 13 | P0497013 | PNEUMATIC HAMMER |
| 13-1 | P0497013-1 | HAMMER HEAD |
| 13-2 | P0497013-2 | HAMMER HEAD FACING |
| 14 | P0497014 | SOLENOID VALVE MOUNT PLATE |
| 15 | P0497015 | SWITCH PLATE |
| 16 | P0497016 | STRAIN RELIEF 1/2" |
| 17 | P0497017 | SOLENOID VALVE CORD |
| 18 | P0497018 | FOOT SWITCH CORD |
| 19 | P0497019 | POWER CORD W/5-15 PLUG |
| 20 | P0497020 | CONNECTOR TUBE |
| 21 | P0497021 | ELBOW 1/4" NPT |
| 22 | P0497022 | 90° MALE CONNECTOR |
| 23 | P0497023 | MALE CONNECTOR |

| REF | PART # | DESCRIPTION |
|------|------------|--------------------------------|
| 24 | P0497024 | HOSE CLAMP |
| 25 | P0497025 | FLEXIBLE HOSE 5/16" x 9-1/16" |
| 26 | P0497026 | FOOT SWITCH |
| 27 | P0497027 | CORRUGATED PLASTIC TUBE |
| 28 | P0497028 | SOLENOID VALVE |
| 29 | P0497029 | AIR CONTROL ASSEMBLY |
| 29-1 | P0497029-1 | FILTER/REGULATOR UNIT |
| 29-2 | P0497029-2 | LUBRICATOR UNIT |
| 30 | P0497030 | HANDWHEEL |
| 30-1 | PSS02 | SET SCREW 5/16-18 X 3/8 |
| 31 | PSB06 | CAP SCREW 1/4-20 X 1 |
| 32 | PSB04 | CAP SCREW 1/4-20 X 1/2 |
| 33 | PSB05 | CAP SCREW 1/4-20 X 3/4 |
| 34 | PSBS20 | BUTTON HD CAP SCR 1/4-20 X 1/2 |
| 35 | PN07 | HEX NUT 10-24 |
| 36 | PLW02 | LOCK WASHER 1/4 |
| 37 | PFS03M | FLANGE SCREW M5-.8 X 6 |
| 38 | PTLW02M | EXT TOOTH WASHER 5MM |
| 39 | PS06 | PHLP HD SCR 10-24 X 3/8 |
| 40 | P0497040 | COMBO LABEL |
| 41 | P0497041 | CRUSHING HAZARD LABEL |
| 42 | P0497042 | EXPLOSION HAZARD LABEL |
| 43 | P0497043 | MACHINE ID LABEL |
| 44 | P0497044 | FLEXIBLE HOSE 5/16" x 13" |
| 45 | PAW05M | HEX WRENCH 5MM |

WARNING

Safety labels warn about machine hazards and ways to prevent injury. The owner of this machine **MUST** maintain the original location and readability of the labels on the machine. If any label is removed or becomes unreadable, **REPLACE** that label before using the machine again. Contact Grizzly at (800) 523-4777 or www.grizzly.com to order new labels.