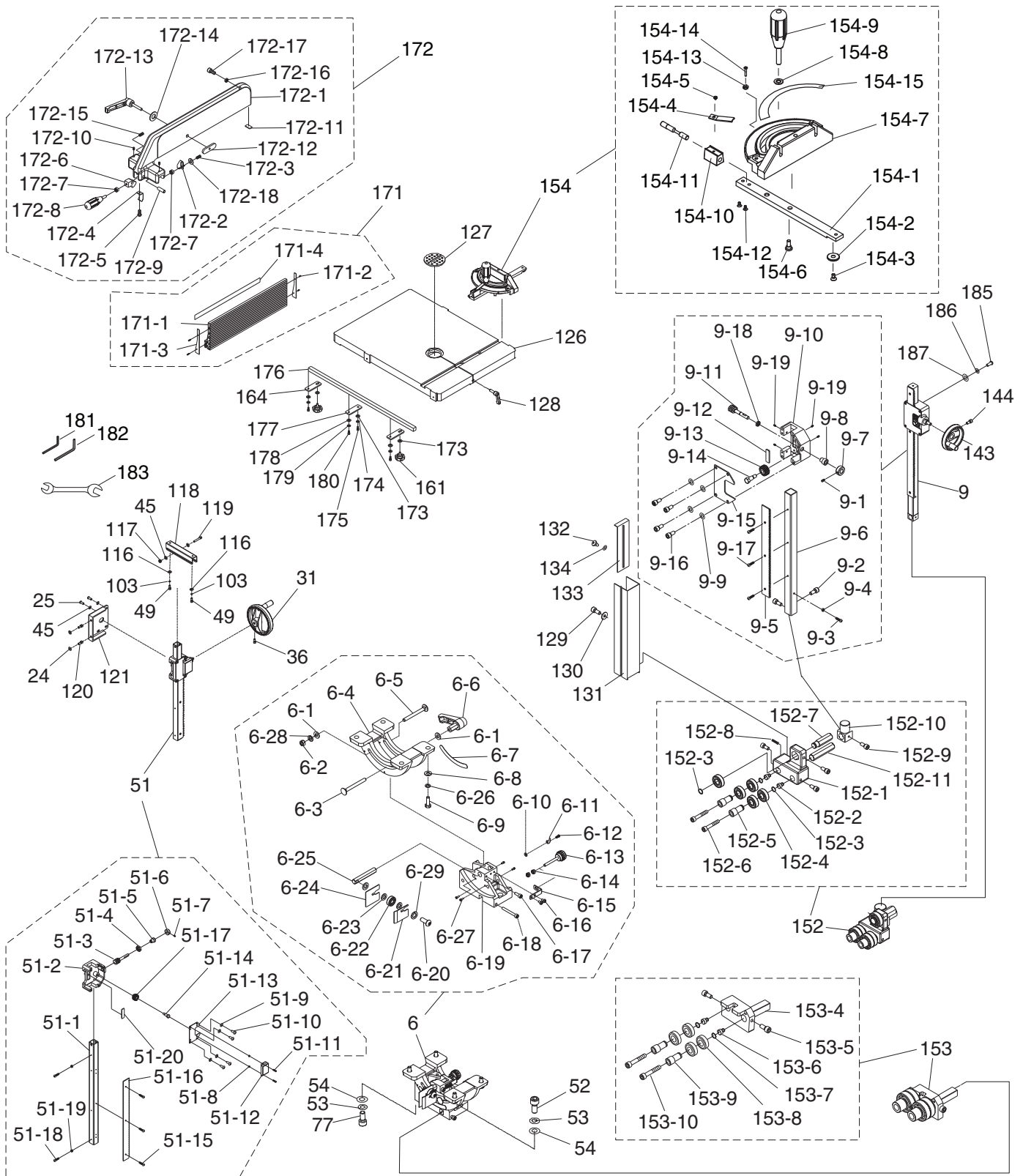


G0514X2B Fence & Guides



G0514X2B Fence & Guides Parts List

REF	PART #	DESCRIPTION
6	P0514X2B006	TRUNNION ASSEMBLY
6-1	P0514X2B006-1	FENDER WASHER 8MM
6-2	P0514X2B006-2	LOCK NUT M8-1.25
6-3	P0514X2B006-3	CARRIAGE BOLT M8-1.25 X 85
6-4	P0514X2B006-4	TRUNNION
6-5	P0514X2B006-5	CARRIAGE BOLT M8-1.25 X 80
6-6	P0514X2B006-6	LOCK HANDLE
6-7	P0514X2B006-7	ANGLE SCALE
6-8	P0514X2B006-8	FLAT WASHER 8MM
6-9	P0514X2B006-9	HEX BOLT M8-1.25 X 25
6-10	P0514X2B006-10	FLAT WASHER 4MM
6-11	P0514X2B006-11	TILT POINTER
6-12	P0514X2B006-12	PHLP HD SCR M4-.7 X 6
6-13	P0514X2B006-13	ADJUSTMENT KNOB BOLT M6-1
6-14	P0514X2B006-14	HEX NUT M6-1
6-15	P0514X2B006-15	L-BRACKET
6-16	P0514X2B006-16	FLAT HD SCR M5-.8 X 15
6-17	P0514X2B006-17	CAP SCREW M6-1 X 16
6-18	P0514X2B006-18	CAP SCREW M6-1 X 50
6-19	P0514X2B006-19	TRUNNION SUPPORT BRACKET
6-20	P0514X2B006-20	BUTTON HD CAP SCR M10-1.5 X 30
6-21	P0514X2B006-21	RIGHT CLAMP PLATE
6-22	P0514X2B006-22	BALL BEARING 6000ZZ
6-23	P0514X2B006-23	FLAT WASHER 10MM
6-24	P0514X2B006-24	LEFT CLAMP PLATE
6-25	P0514X2B006-25	ADJUSTMENT BLOCK
6-26	P0514X2B006-26	LOCK WASHER 8MM
6-27	P0514X2B006-27	CAP SCREW M5-.8 X 6
6-28	P0514X2B006-28	LOCK WASHER 8MM
6-29	P0514X2B006-29	LOCK WASHER 10MM
9	P0514X2B009	UPPER GUIDE POST ASSEMBLY
9-1	P0514X2B009-1	SET SCREW M5-.8 X 5
9-2	P0514X2B009-2	CAP SCREW M6-1 X 16
9-3	P0514X2B009-3	PHLP HD SCR M4-.7 X 10
9-4	P0514X2B009-4	HEX NUT M4-.7
9-5	P0514X2B009-5	RACK
9-6	P0514X2B009-6	GUIDE POST
9-7	P0514X2B009-7	LOCK COLLAR
9-8	P0514X2B009-8	BUSHING
9-9	P0514X2B009-9	LOCK WASHER 8MM
9-10	P0514X2B009-10	GUIDE POST BRACKET
9-11	P0514X2B009-11	WORM SHAFT
9-12	P0514X2B009-12	FIXED PLATE
9-13	P0514X2B009-13	GEAR 15T
9-14	P0514X2B009-14	GEAR STEP BOLT
9-15	P0514X2B009-15	BRACKET COVER
9-16	P0514X2B009-16	CAP SCREW M8-1.25 X 16
9-17	P0514X2B009-17	FLAT HD SCR M4-.7 X 8
9-18	P0514X2B009-18	BUSHING
9-19	P0514X2B009-19	BRACKET SET SCREW PLASTIC
24	P0514X2B024	LOCK WASHER 8MM
25	P0514X2B025	CAP SCREW M8-1.25 X 20
31	P0514X2B031	TABLE TILT HANDWHEEL

REF	PART #	DESCRIPTION
36	P0514X2B036	CAP SCREW M6-1 X 25
45	P0514X2B045	FENDER WASHER 8MM
49	P0514X2B049	CAP SCREW M6-1 X 10
51	P0514X2B051	TABLE TILT BRACKET ASSEMBLY
51-1	P0514X2B051-1	SQUARE TUBE
51-2	P0514X2B051-2	GUIDE BRACKET
51-3	P0514X2B051-3	WORM SHAFT
51-4	P0514X2B051-4	HEX NUT M16-1.5
51-5	P0514X2B051-5	BUSHING
51-6	P0514X2B051-6	LOCK COLLAR 22 X 10 X 10MM
51-7	P0514X2B051-7	SET SCREW M5-.8 X 5
51-8	P0514X2B051-8	HEX NUT M5-.8
51-9	P0514X2B051-9	LOCK WASHER 8MM
51-10	P0514X2B051-10	CAP SCREW M8-1.25 X 16
51-11	P0514X2B051-11	FLANGE SCREW M5-.8 X 10
51-12	P0514X2B051-12	PINION GEAR COVER
51-13	P0514X2B051-13	BRACKET COVER
51-14	P0514X2B051-14	PINION GEAR STEP BOLT
51-15	P0514X2B051-15	FLAT HD SCR M4-.7 X 10
51-16	P0514X2B051-16	RACK
51-17	P0514X2B051-17	PINION GEAR 15T
51-18	P0514X2B051-18	PHLP HD SCR M4-.7 X 10
51-19	P0514X2B051-19	HEX NUT M4-.7
51-20	P0514X2B051-20	FIXED PLATE
52	P0514X2B052	CAP SCREW M10-1.5 X 35
53	P0514X2B053	LOCK WASHER 10MM
54	P0514X2B054	FLAT WASHER 10MM
77	P0514X2B077	CAP SCREW M10-1.5 X 35
103	P0514X2B103	LOCK WASHER 6MM
116	P0514X2B116	FLAT WASHER 6MM
117	P0514X2B117	LOCK NUT M8-1.25
118	P0514X2B118	SLIDING PLATE
119	P0514X2B119	HEX BOLT M8-1.25 X 55
120	P0514X2B120	CAP SCREW M8-1.25 X 20
121	P0514X2B121	TRUNNION PLATE
126	P0514X2B126	TABLE
127	P0514X2B127	TABLE INSERT
128	P0514X2B128	TABLE PIN
129	P0514X2B129	CAP SCREW M5-.8 X 10
130	P0514X2B130	FLAT WASHER 5MM
131	P0514X2B131	GUIDE POST COVER
132	P0514X2B132	STEP SCREW
133	P0514X2B133	POST COVER SLIDING PLATE
134	P0514X2B134	FIBER FLAT WASHER
143	P0514X2B143	ELEVATION HANDWHEEL
144	P0514X2B144	CAP SCREW M6-1 X 20
152	P0514X2B152	UPPER BLADE GUIDE ASSEMBLY
152-1	P0514X2B152-1	UPPER GUIDE BRACKET
152-2	P0514X2B152-2	BIAS SHAFT
152-3	P0514X2B152-3	EXT RETAINING RING 15MM
152-4	P0514X2B152-4	BALL BEARING 6202ZZ
152-5	P0514X2B152-5	BEARING BUSING
152-6	P0514X2B152-6	CAP SCREW M6-1 X 35



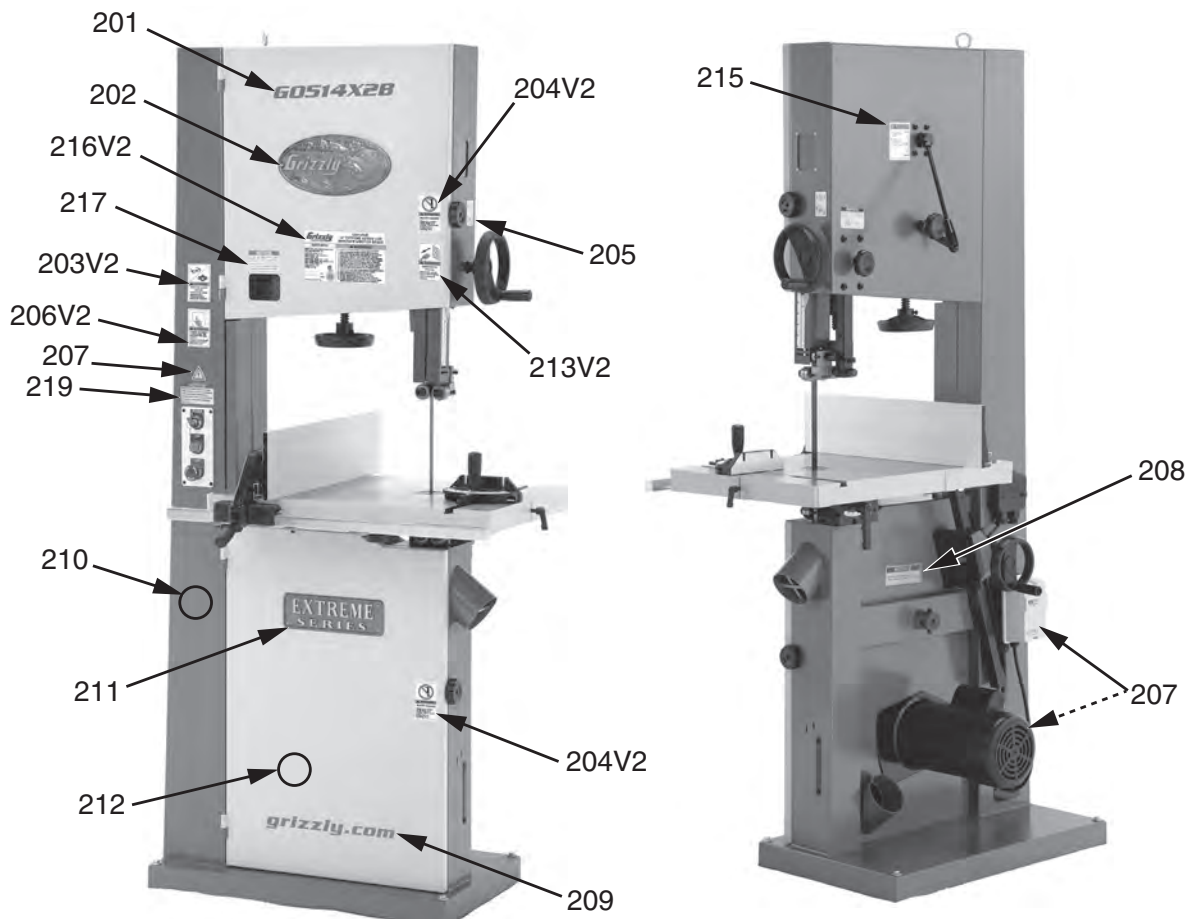
G0514X2B Fence & Guides Parts List

REF	PART #	DESCRIPTION
152-7	P0514X2B152-7	ADJUSTMENT SHAFT
152-8	P0514X2B152-8	SET SCREW M6-1 X 10
152-9	P0514X2B152-9	CAP SCREW M6-1 X 16
152-10	P0514X2B152-10	GUIDE POST CONNECTOR
152-11	P0514X2B152-11	BRACKET ROD
153	P0514X2B153	LOWER BLADE GUIDE ASSEMBLY
153-4	P0514X2B153-4	LOWER GUIDE BRACKET
153-5	P0514X2B153-5	CAP SCREW M6-1 X 16
153-6	P0514X2B153-6	BIAS SHAFT
153-7	P0514X2B153-7	EXT RETAINING RING 15MM
153-8	P0514X2B153-8	BALL BEARING 6202ZZ
153-9	P0514X2B153-9	BEARING BUSHING
153-10	P0514X2B153-10	CAP SCREW M6-1 X 35
154	P0514X2B154	MITER GAUGE ASSEMBLY
154-1	P0514X2B154-1	T-SLOT BAR
154-2	P0514X2B154-2	GUIDE PIECE
154-3	P0514X2B154-3	FLAT HD SCR M6-1 X 8
154-4	P0514X2B154-4	ALIGNMENT PLATE
154-5	P0514X2B154-5	PHLP HD SCR 10-24 X 3/16
154-6	P0514X2B154-6	SHOULDER SCREW
154-7	P0514X2B154-7	MITER GAUGE BODY
154-8	P0514X2B154-8	FLAT WASHER 8MM
154-9	P0514X2B154-9	MITER GAUGE HANDLE
154-10	P0514X2B154-10	ALIGNMENT BLOCK
154-11	P0514X2B154-11	ALIGNMENT PIN
154-12	P0514X2B154-12	PHLP HD SCR 10-24 X 3/16
154-13	P0514X2B154-13	HEX NUT M4-.7
154-14	P0514X2B154-14	PHLP HD SCR M4-.7 X 16
154-15	P0514X2B154-15	MITER GAUGE SCALE
161	P0514X2B161	KNOB SCREW M8-1.25 X 20
164	P0514X2B164	OUTER RAIL PLATE
171	P0514X2B171	RESAW FENCE ASSEMBLY
171-1	P0514X2B171-1	RESAW FENCE 590MM ALUMINUM
171-2	P0514X2B171-2	TAP SCREW M3.5 X 8
171-3	P0514X2B171-3	RESAW FENCE END PLATE

REF	PART #	DESCRIPTION
171-4	P0514X2B171-4	SCALE
172	P0514X2B172	FENCE ASSEMBLY
172-1	P0514X2B172-1	FENCE
172-2	P0514X2B172-2	POINTER
172-3	P0514X2B172-3	FLANGE SCREW M5-.8 X 25
172-4	P0514X2B172-4	LOCK PLATE
172-5	P0514X2B172-5	FLANGE SCREW M4-.7 X 8
172-6	P0514X2B172-6	PIVOT BLOCK
172-7	P0514X2B172-7	HEX NUT M8-1.25
172-8	P0514X2B172-8	HANDLE
172-9	P0514X2B172-9	LOCK ROD
172-10	P0514X2B172-10	STANDOFF SET SCREW PLASTIC
172-11	P0514X2B172-11	NYLON PAD
172-12	P0514X2B172-12	GUIDE KEY
172-13	P0514X2B172-13	LOCK HANDLE M8-1.25 X 45
172-14	P0514X2B172-14	FLAT WASHER 8MM
172-15	P0514X2B172-15	SET SCREW M8-1.25 X 12
172-16	P0514X2B172-16	HEX NUT M8-1.25
172-17	P0514X2B172-17	CAP SCREW M8-1.25 X 20
172-18	P0514X2B172-18	FLAT WASHER 8MM
173	P0514X2B173	FLAT WASHER 8MM
174	P0514X2B174	LOCK WASHER 8MM
175	P0514X2B175	CAP SCREW M8-1.25 X 20
176	P0514X2B176	FENCE RAIL
177	P0514X2B177	INNER RAIL PLATE
178	P0514X2B178	FLAT WASHER 6MM
179	P0514X2B179	LOCK WASHER 6MM
180	P0514X2B180	CAP SCREW M6-1 X 20
181	P0514X2B181	WRENCH HEX 5MM
182	P0514X2B182	WRENCH HEX 8MM
183	P0514X2B183	WRENCH 10 X 13
185	P0514X2B185	BUTTON HD CAP SCR M8-1.25 X 30
186	P0514X2B186	LOCK WASHER 8MM
187	P0514X2B187	FENDER WASHER 8MM



G0514X2B Labels



REF	PART #	DESCRIPTION
201	P0514X2B201	MODEL NUMBER LABEL
202	P0514X2B202	GRIZZLY LOGO PLATE
203V2	P0514X2B203V2	GLASSES/RESPIRATOR LABEL V2.08.13
204V2	P0514X2B204V2	OPEN DOOR LABEL V2.08.13
205	P0514X2B205	GUARD ADJ LABEL
206V2	P0514X2B206V2	READ MANUAL LABEL V2.08.13
207	P0514X2B207	ELECTRICITY LABEL
208	P0514X2B208	TABLE LOCK LEVER LABEL

REF	PART #	DESCRIPTION
210	P0514X2B210	TOUCH-UP PAINT, GRIZZLY GREEN
211	P0514X2B211	EXTREME SERIES NAMEPLATE
212	P0514X2B212	TOUCH-UP PAINT, PUTTY
213V2	P0514X2B213V2	DISCONNECT POWER LABEL V2.08.13
215	P0514X2B215	TENSION ADJ LABEL
216V2	P0514X2B216V2	MACHINE ID LABEL V2.02.12
217	P0514X2B217	BLADE TENSION LABEL
219	P0514X2B219	MAGNETIC BRAKE NOTICE

WARNING

Safety labels warn about machine hazards and ways to prevent injury. The owner of this machine **MUST** maintain the original location and readability of the labels on the machine. If any label is removed or becomes unreadable, **REPLACE** that label before using the machine again. Contact Grizzly at (800) 523-4777 or www.grizzly.com to order new labels.

