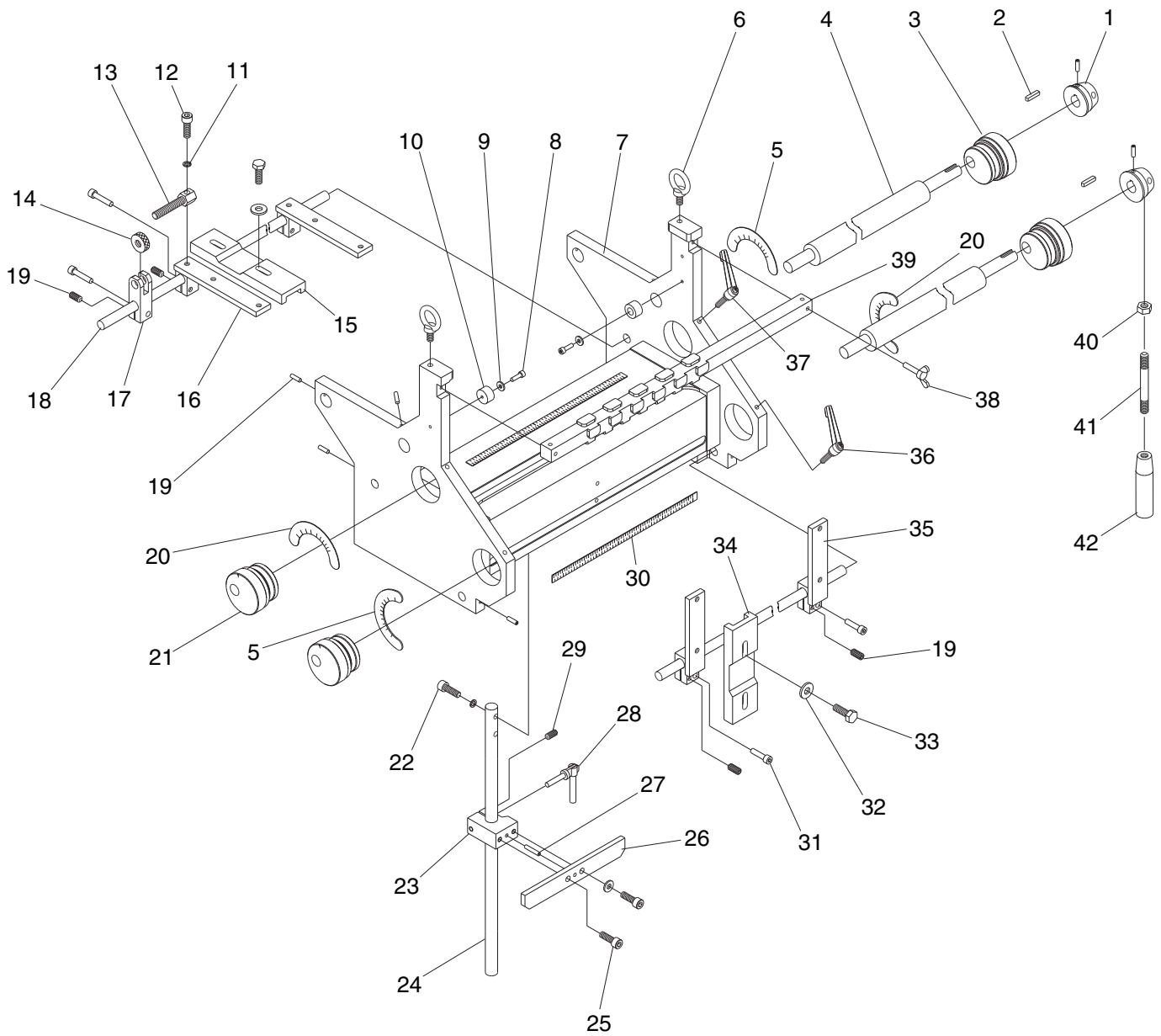


Table Parts Breakdown



| | |
|---|---|
| <p>PARTS STORE</p>  <p>grizzly.com</p> | <p>BUY PARTS ONLINE! Scan QR code with your digital device or visit www.grizzly.com/parts to purchase replacement parts or check pricing and availability.</p> |
|---|---|



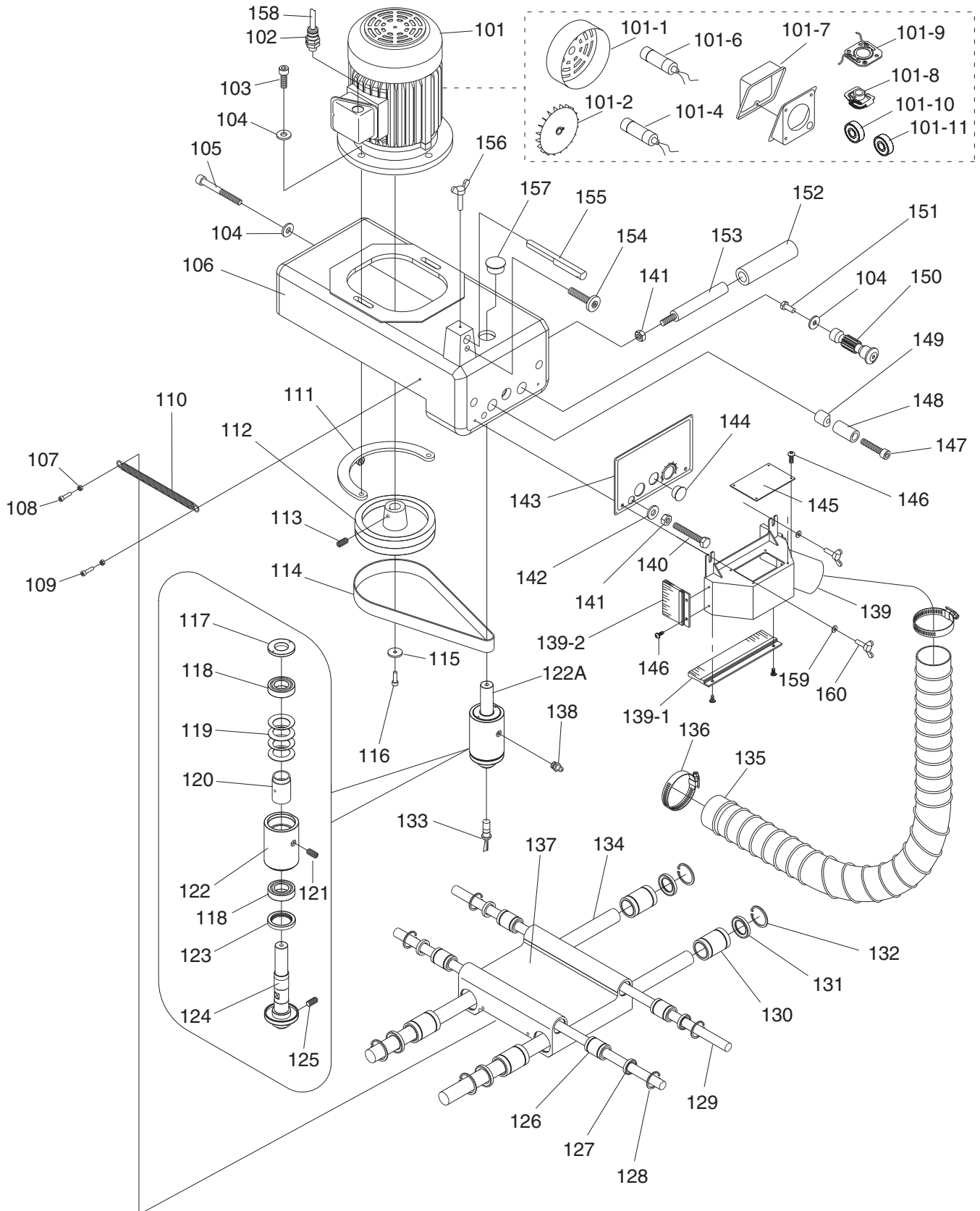
Table Parts List

| REF | PART # | DESCRIPTION |
|-----|----------|------------------------|
| 1 | P0610001 | LEVER HUB |
| 2 | PK42M | KEY 6 X 6 X 30 |
| 3 | P0610003 | ECCENTRIC WHEEL |
| 4 | P0610004 | SLIDING ROD |
| 5 | P0610005 | CLAMP SCALE RL |
| 6 | P0610006 | EYE BOLT M10-1.5 X 15 |
| 7 | P0610007 | WORK TABLE |
| 8 | PCAP02M | CAP SCREW M6-1 X 20 |
| 9 | PW03M | FLAT WASHER 6MM |
| 10 | P0610010 | BUFFER PAD |
| 11 | PLW04M | LOCK WASHER 8MM |
| 12 | PCAP13M | CAP SCREW M8-1.25 X 30 |
| 13 | P0610013 | ADJUSTMENT SCREW |
| 14 | P0610014 | ADJUSTMENT NUT |
| 15 | P0610015 | BUFFER PAD |
| 16 | P0610016 | FENCE BASE |
| 17 | P0610017 | MICRO-ADJUSTMENT SEAT |
| 18 | P0610018 | SLIDING ROD |
| 19 | PSS04M | SET SCREW M6-1 X 12 |
| 20 | P0610020 | CLAMP SCALE LR |
| 21 | P0610021 | ECCENTRIC WHEEL |

| REF | PART # | DESCRIPTION |
|-----|----------|---------------------------|
| 22 | PCAP40M | CAP SCREW M8-1.25 X 35 |
| 23 | P0610023 | CLAMPING SEAT |
| 24 | P0610024 | GUIDE ROD |
| 25 | PCAP14M | CAP SCREW M8-1.25 X 20 |
| 26 | P0610026 | ADJUSTMENT PLATE |
| 27 | P0610027 | SPRING KEY |
| 28 | P0610028 | LOCK HANDLE M8-1.25 X 35 |
| 29 | PSS06M | SET SCREW M8-1.25 X 16 |
| 30 | P0610030 | SCALE |
| 31 | PCAP31M | CAP SCREW M8-1.25 X 25 |
| 32 | PW01M | FLAT WASHER 8MM |
| 33 | PB09M | HEX BOLT M8-1.25 X 20 |
| 34 | P0610034 | BUFFER PAD |
| 35 | P0610035 | FENCE BASE |
| 36 | P0610036 | LOCK HANDLE M8-1.25 X 25 |
| 37 | P0610037 | LOCK HANDLE M8-1.25 X 45 |
| 38 | P0610038 | WING SCREW M6-1 X 35 |
| 39 | P0610039 | COPYING TEMPLATE |
| 40 | PN09M | HEX NUT M12-1.75 |
| 41 | P0610041 | LEVER |
| 42 | P0610042 | HANDLE KNOB M12-1.75 X 82 |



Headstock Parts Breakdown



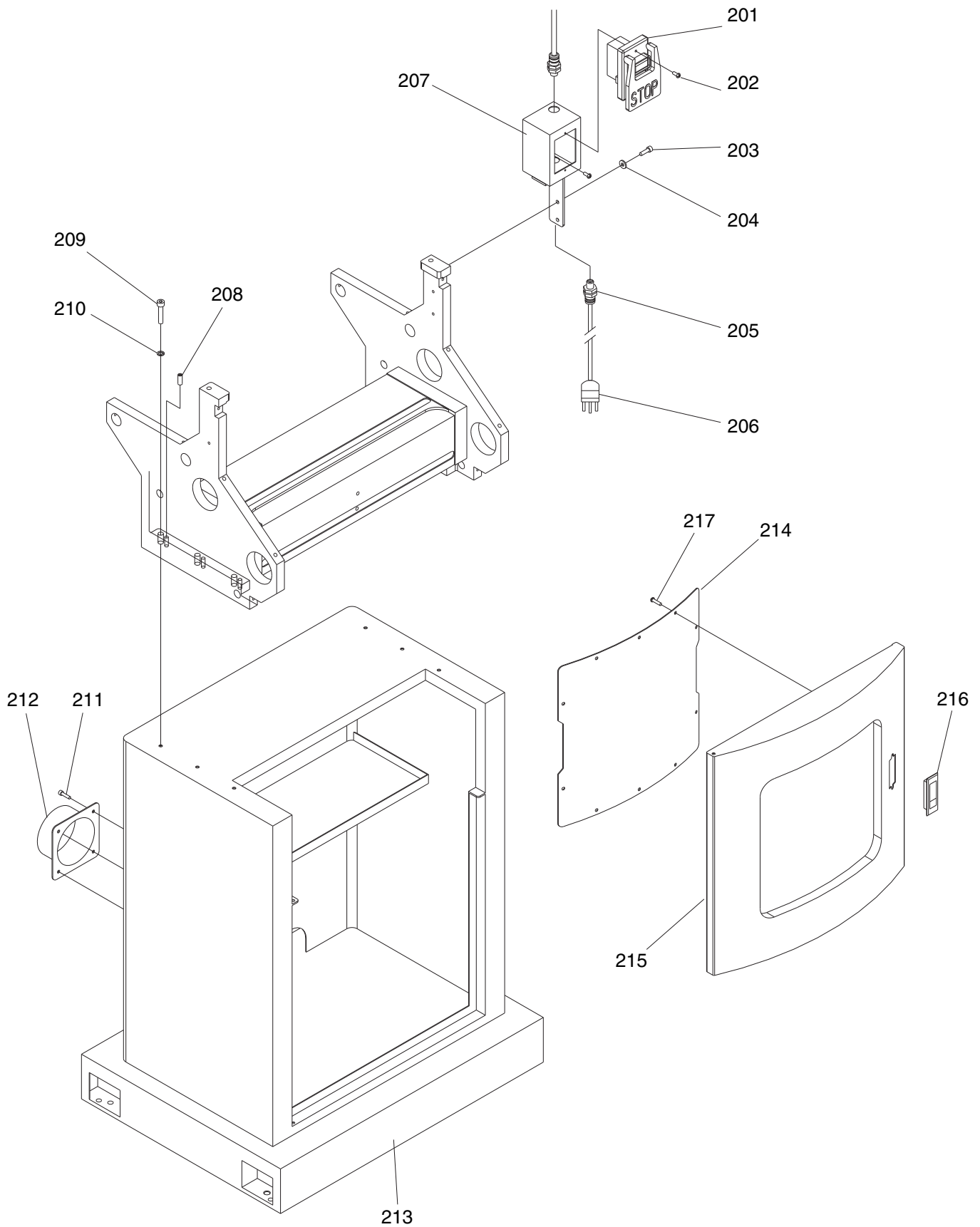
Headstock Parts List

| REF | PART # | DESCRIPTION |
|--------|------------|-----------------------------|
| 101 | P0610101 | MOTOR 1HP 110V/220V 1-PH |
| 101-1 | P0610101-1 | MOTOR FAN COVER |
| 101-2 | P0610101-2 | MOTOR FAN |
| 101-4 | P0610101-4 | S CAPACITOR 300M 250V |
| 101-6 | P0610101-6 | R CAPACITOR 30M 250V |
| 101-7 | P0610101-7 | MOTOR JUNCTION BOX |
| 101-8 | P0610101-8 | CENTRIFUGAL SWITCH 19-3500 |
| 101-9 | P0610101-9 | CONTACT PLATE 23 X 61MM EXT |
| 101-10 | P6203RSZ | BALL BEARING 6203RSZ |
| 101-11 | P6204RSZ | BALL BEARING 6204RSZ |
| 102 | P0610102 | STRAIN RELIEF 11-10B |
| 103 | PCAP40M | CAP SCREW M8-1.25 X 35 |
| 104 | PW01M | FLAT WASHER 8MM |
| 105 | PCAP157M | CAP SCREW M8-1.25 X 100 |
| 106 | P0610106 | SPINDLE SLIDE SEAT |
| 107 | PN06M | HEX NUT M5-.8 |
| 108 | PCAP79M | CAP SCREW M5-.8 X 35 |
| 109 | PCAP15M | CAP SCREW M5-.8 X 20 |
| 110 | P0610110 | EXTENSION SPRING |
| 111 | P0610111 | MOTOR BRACKET |
| 112 | P0610112 | MOTOR PULLEY |
| 113 | PSS53M | SET SCREW M5-.8 X 12 |
| 114 | P0610114 | FLAT BELT 670 X 25 |
| 115 | PW03M | FLAT WASHER 6MM |
| 116 | PCAP02M | CAP SCREW M6-1 X 20 |
| 117 | P0610117 | FIXING NUT |
| 118 | P0610118 | BALL BEARING 6005TB.P63 |
| 119 | P0610119 | COMPRESSION SPRING AK-6005 |
| 120 | P0610120 | SPACER |
| 121 | PSS07M | SET SCREW M5-.8 X 5 |
| 122 | P0610122 | SPINDLE BEARING HOUSING |
| 122A | P0610122A | SPINDLE ASSEMBLY |
| 123 | P0610123 | LOCK RING |
| 124 | P0610124 | ECCENTRIC SPINDLE |
| 125 | PSS16M | SET SCREW M8-1.25 X 10 |
| 126 | P0610126 | LINEAR BUSHING 16UU |

| REF | PART # | DESCRIPTION |
|-------|------------|--------------------------|
| 127 | P0610127 | SEAL 16 X 28 X 7 X 3 |
| 128 | PR20M | INT RETAINING RING 28MM |
| 129 | P0610129 | GUIDE ROD 16 X 459MML |
| 130 | P0610130 | LINEAR BUSHING 25UU |
| 131 | P0610131 | SEAL 25 X 40 X 7 X 2 |
| 132 | PR23M | INT RETAINING RING 40MM |
| 133 | H9388 | CUTTER |
| 134 | P0610134 | GUIDE ROD 25 X 599MML |
| 135 | P0610135 | FLEXIBLE HOSE 2.5" X 53" |
| 136 | P0610136 | HOSE CLAMP 2-3/4" |
| 137 | P0610137 | CARRIAGE |
| 138 | PZERK2 | GREASE FITTING M6-1 X 5 |
| 139 | P0610139 | GUARD |
| 139-1 | P0610139-1 | BOTTOM GUARD BRUSH |
| 139-2 | P0610139-2 | SIDE GUARD BRUSH |
| 140 | P0610140 | HEX BOLT M10-1.5 X 185 |
| 141 | PN02M | HEX NUT M10-1.5 |
| 142 | PW04M | FLAT WASHER 10MM |
| 143 | P0610143 | CONTROL PANEL PLATE |
| 144 | P0610144 | PLASTIC PLUG 22MM |
| 145 | P0610145 | WINDOW |
| 146 | PS17M | PHLP HD SCR M4-.7 X 6 |
| 147 | PCAP66M | CAP SCREW M8-1.25 X 65 |
| 148 | P0610148 | CUTTER LOCK SLEEVE |
| 149 | P0610149 | CUTTER LOCK CLAMP SLEEVE |
| 150 | P0610150 | GEAR SHAFT |
| 151 | PB03M | HEX BOLT M8-1.25 X 16 |
| 152 | P0610152 | SPONGE COATING |
| 153 | P0610153 | HANDLE |
| 154 | P0610154 | ADJUSTMENT SCREW |
| 155 | P0610155 | TRACER PIN |
| 156 | P0610156 | WING SCREW M6-1 X 20 |
| 157 | P0610157 | PLUG 30MM |
| 158 | P0610158 | MOTOR CORD |
| 159 | PW02M | FLAT WASHER 5MM |
| 160 | P0610160 | WING SCREW M5-.8 X 15 |



Stand Parts Breakdown

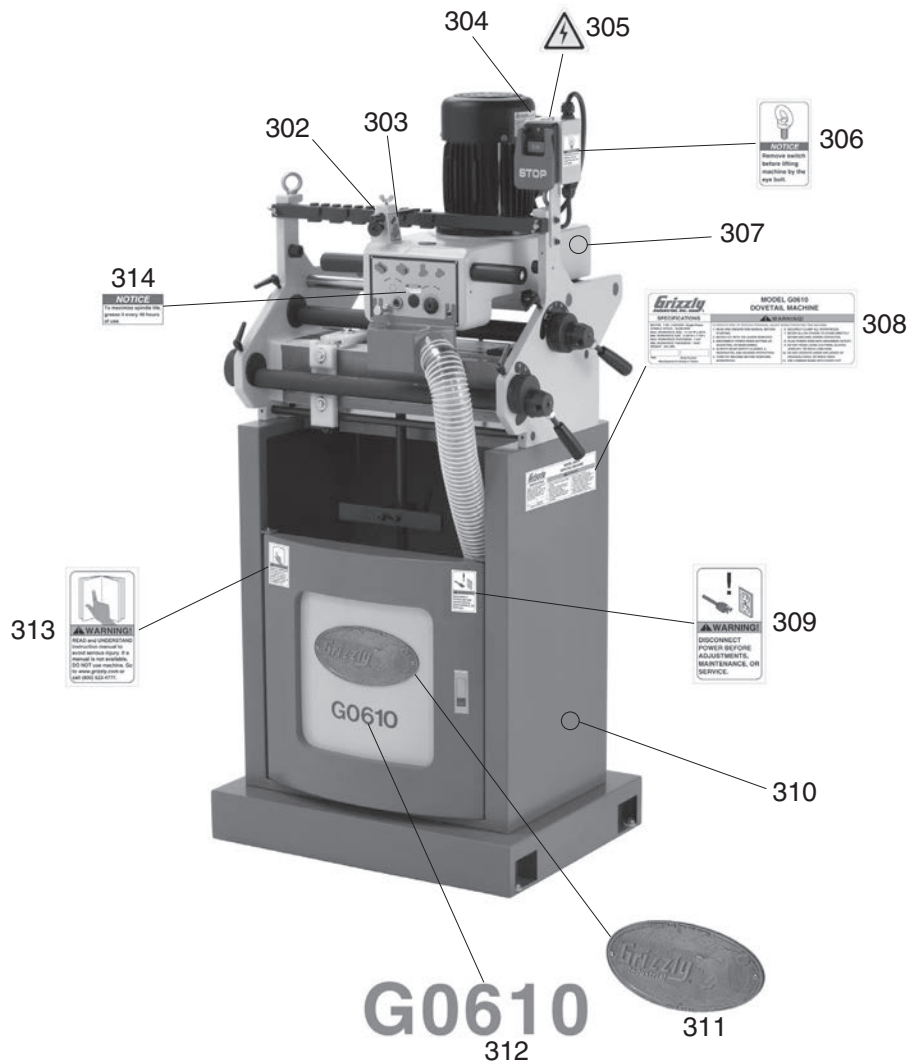


Stand Parts List

| REF | PART # | DESCRIPTION |
|-----|----------|-----------------------------|
| 201 | H8243 | ON/OFF PUSH BUTTON SWITCH |
| 202 | PS52M | PHLP HD SCR M4-.7 X 20 |
| 203 | PCAP01M | CAP SCREW M6-1 X 16 |
| 204 | PW03M | FLAT WASHER 6MM |
| 205 | P0610205 | CABLE TIE CLAMP |
| 206 | P0610206 | POWER CORD 14G 3W 5-15 PLUG |
| 207 | P0610207 | SWITCH BOX |
| 208 | PCAP58M | CAP SCREW M8-1.25 X 12 |
| 209 | PCAP40M | CAP SCREW M8-1.25 X 35 |
| 210 | PLW04M | LOCK WASHER 8MM |
| 211 | PCAP50M | CAP SCREW M5-.8 X 10 |
| 212 | P0610212 | DUST PORT 4" |
| 213 | P0610213 | CABINET |
| 214 | P0610214 | DOOR PANEL |
| 215 | P0610215 | DOOR |
| 216 | P0610216 | DOOR LATCH |
| 217 | PS09M | PHLP HD SCR M5-.8 X 10 |



Labels Parts Breakdown



| REF | PART # | DESCRIPTION |
|-----|-----------|----------------------|
| 302 | P0610302 | TAIL SHORTER LABEL |
| 303 | P0610303 | TAIL LONGER LABEL |
| 304 | P0610304 | MOTOR LABEL |
| 305 | PLABEL-14 | ELECTRICITY LABEL |
| 306 | P0610306 | EYEBOLT NOTICE LABEL |
| 307 | PPAINT-11 | GREY PUTTY PAINT |
| 308 | P0610308 | MACHINE ID LABEL |

| REF | PART # | DESCRIPTION |
|-----|------------|--------------------------|
| 309 | PLABEL-62 | DISCONNECT POWER LABEL |
| 310 | PPAINT-1 | "GRIZZLY GREEN" PAINT |
| 311 | G8588 | GRIZZLY LOGO PLATE |
| 312 | P0610312 | MODEL NUMBER LABEL G0610 |
| 313 | PLABEL-12A | READ MANUAL LABEL |
| 314 | P0610314 | GREASE SPINDLE LABEL |

WARNING

Safety labels warn about machine hazards and ways to prevent injury. The owner of this machine **MUST** maintain the original location and readability of the labels on the machine. If any label is removed or becomes unreadable, **REPLACE** that label before using the machine again. Contact Grizzly at (800) 523-4777 or www.grizzly.com to order new labels.

