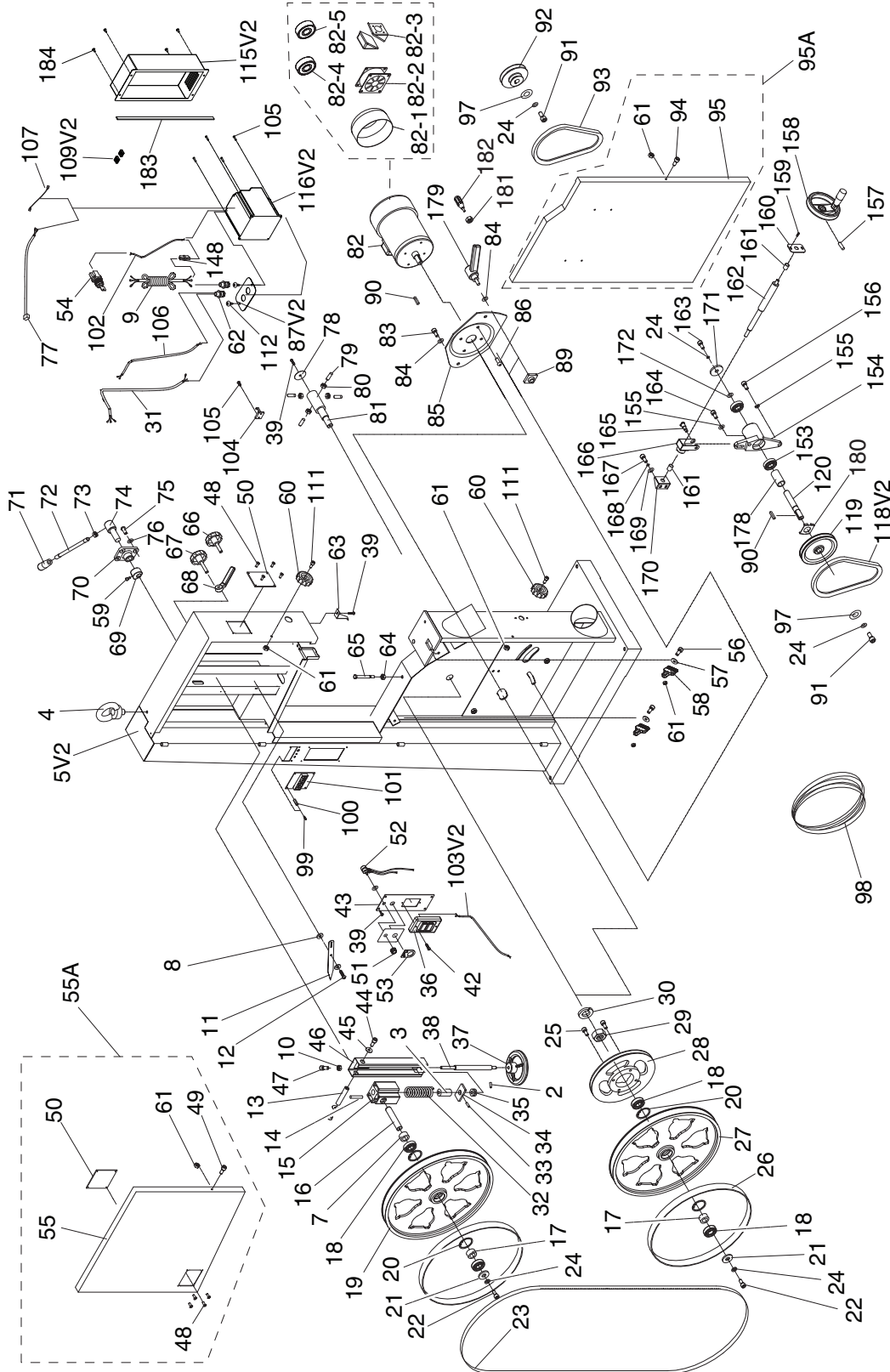


# SECTION 11: PARTS

## Main



# Main Parts List

| REF PART # | DESCRIPTION                                     |
|------------|---|
| 2          | P0640X002 SET SCREW M6-1 X 10                   |
| 3          | P0640X003 SPRING BUSHING                        |
| 4          | P0640X004 LIFTING EYE BOLT M10-1.5              |
| 5V2        | P0640X005V2 MACHINE BODY V2.12.20               |
| 7          | P0640X007 WHEEL SHAFT BUSHING                   |
| 8          | P0640X008 FLAT WASHER 4MM                       |
| 9          | P0640X009 POWER CORD 14G 3W                     |
| 10         | P0640X010 HEX NUT M6-1                          |
| 11         | P0640X011 TENSION POINTER                       |
| 12         | P0640X012 STEP SCREW M4-.7 X 6                  |
| 13         | P0640X013 HINGE SHAFT                           |
| 14         | P0640X014 ROLL PIN 5 X 35                       |
| 15         | P0640X015 UPPER WHEEL SHAFT HINGE               |
| 16         | P0640X016 UPPER WHEEL SHAFT                     |
| 17         | P0640X017 WHEEL BUSHING                         |
| 18         | P0640X018 BALL BEARING 6204-2RS                 |
| 19         | P0640X019 UPPER WHEEL 17"                       |
| 20         | P0640X020 INT RETAINING RING 47MM               |
| 21         | P0640X021 FLAT WASHER 8MM                       |
| 22         | P0640X022 CAP SCREW M8-1.25 X 16                |
| 23         | P0640X023 WOOD SAW BLADE 131-1/2" X 1/2"        |
| 24         | P0640X024 LOCK WASHER 8MM                       |
| 25         | P0640X025 CAP SCREW M8-1.25 X 20                |
| 26         | P0640X026 URETHANE TIRE 17" 1-PAIR              |
| 27         | P0640X027 LOWER WHEEL 17"                       |
| 28         | P0640X028 WHEEL PULLEY                          |
| 29         | P0640X029 HEX NUT 1-14                          |
| 30         | P0640X030 LOCK WASHER 1"                        |
| 31         | P0640X031 MOTOR CORD 16G 4W                     |
| 32         | P0640X032 COMPRESSION SPRING 8 X 7-1/2 X 36     |
| 33         | P0640X033 ROLL PIN 3 X 16                       |
| 34         | P0640X034 SPRING BASE PLATE                     |
| 35         | P0640X035 THRUST BEARING 51201                  |
| 36         | P0640X036 START/STOP SWITCH CHENG SHANG 220V    |
| 37         | P0640X037 TENSION HANDWHEEL                     |
| 38         | P0640X038 TENSION ADJUSTING BOLT                |
| 39         | P0640X039 FLANGE SCREW M5-.8 X 10               |
| 40         | P0640X040 EXT TOOTH WASHER 5MM                  |
| 42         | P0640X042 FLANGE SCREW M5-.8 X 16               |
| 43         | P0640X043 CONTROL PANEL PLATE                   |
| 44         | P0640X044 CAP SCREW M8-1.25 X 16                |
| 45         | P0640X045 FLAT WASHER 8MM                       |
| 46         | P0640X046 UPPER WHEEL SLIDING BRACKET           |
| 47         | P0640X047 CAP SCREW M6-1 X 25                   |
| 48         | P0640X048 STEEL BLIND RIVET 3 X 10MM            |
| 49         | P0640X049 CAP SCREW M6-1 X 10                   |
| 50         | P0640X050 PLASTIC WINDOW                        |
| 51         | P0640X051 VS DIAL                               |
| 52         | P0640X052 POTENTIOMETER JIA XIN CF-X2-M-SA6M46E |
| 53         | P0640X053 ON/OFF KEY SWITCH PLATE               |
| 54         | P0640X054 KEY SWITCH JUN YANG 22                |
| 55         | P0640X055 UPPER WHEEL COVER                     |

| REF PART # | DESCRIPTION                               |
|------------|---|
| 55A        | P0640X055A UPPER WHEEL COVER ASSEMBLY     |
| 56         | P0640X056 HEX BOLT M6-1 X 25              |
| 57         | P0640X057 FLAT WASHER 6MM                 |
| 58         | P0640X058 WHEEL BRUSH                     |
| 59         | P0640X059 CAP SCREW M6-1 X 25             |
| 60         | P0640X060 DOOR KNOB                       |
| 61         | P0640X061 LOCK NUT M6-1                   |
| 62         | P0640X062 STRAIN RELIEF 16MM              |
| 63         | P0640X063 HEIGHT POINTER                  |
| 64         | P0640X064 HEX NUT M8-1.25                 |
| 65         | P0640X065 HEX BOLT M8-1.25 X 90           |
| 66         | P0640X066 KNOB BOLT M10-1.5 X 20          |
| 67         | P0640X067 KNOB BOLT M10-1.5 X 55          |
| 68         | P0640X068 LOCK HANDLE M10-1.5             |
| 69         | P0640X069 CAM                             |
| 70         | P0640X070 SHAFT BRACKET                   |
| 71         | P0640X071 LEVER KNOB                      |
| 72         | P0640X072 LEVER ROD                       |
| 73         | P0640X073 HEX NUT M12-1.75                |
| 74         | P0640X074 QUICK-TENSION SHAFT             |
| 75         | P0640X075 BUTTON HD CAP SCR M8-1.25 X 20  |
| 76         | P0640X076 LOCK WASHER 8MM                 |
| 77         | P0640X077 PC BOARD POWER CORD             |
| 78         | P0640X078 SHAFT COVER                     |
| 79         | P0640X079 SET SCREW M8-1.25 X 20          |
| 80         | P0640X080 HEX NUT M8-1.25                 |
| 81         | P0640X081 LOWER WHEEL SHAFT               |
| 82         | P0640X082 MOTOR 2HP 220V 3-PH             |
| 82-1       | P0640X082-1 MOTOR FAN COVER               |
| 82-2       | P0640X082-2 MOTOR FAN                     |
| 82-3       | P0640X082-3 MOTOR JUNCTIONBOX             |
| 82-4       | P0640X082-4 BALL BEARING 6203ZZ           |
| 82-5       | P0640X082-5 BALL BEARING 6205ZZ           |
| 83         | P0640X083 HEX BOLT M10-1.5 X 25           |
| 84         | P0640X084 LOCK WASHER 10MM                |
| 85         | P0640X085 MOTOR MOUNT                     |
| 86         | P0640X086 BUTTON HD CAP SCR M8-1.25 X 20  |
| 87V2       | P0640X087V2 STRAIN RELIEF PLATE V2.12.20  |
| 89         | P0640X089 LOCK HANDLE BRACKET             |
| 90         | P0640X090 KEY 5 X 5 X 35                  |
| 91         | P0640X091 HEX BOLT M8-1.25 X 20 LH        |
| 92         | P0640X092 MOTOR PULLEY                    |
| 93         | P0640X093 V-BELT A44                      |
| 94         | P0640X094 CAP SCREW M6-1 X 10             |
| 95         | P0640X095 LOWER WHEEL COVER               |
| 95A        | P0640X095A LOWER WHEEL COVER ASSEMBLY     |
| 97         | P0640X097 FLAT WASHER 8MM                 |
| 98         | P0640X098 METAL SAW BLADE 131-1/2" X 1/2" |
| 99         | P0640X099 PHLP HD SCR M3-.5 X 6           |
| 100        | P0640X100 HEX NUT M3-.5                   |
| 101        | P0640X101 DIGITAL DISPLAY                 |
| 102        | P0640X102 KEY SWITCH CONNECTOR CORD 14G   |



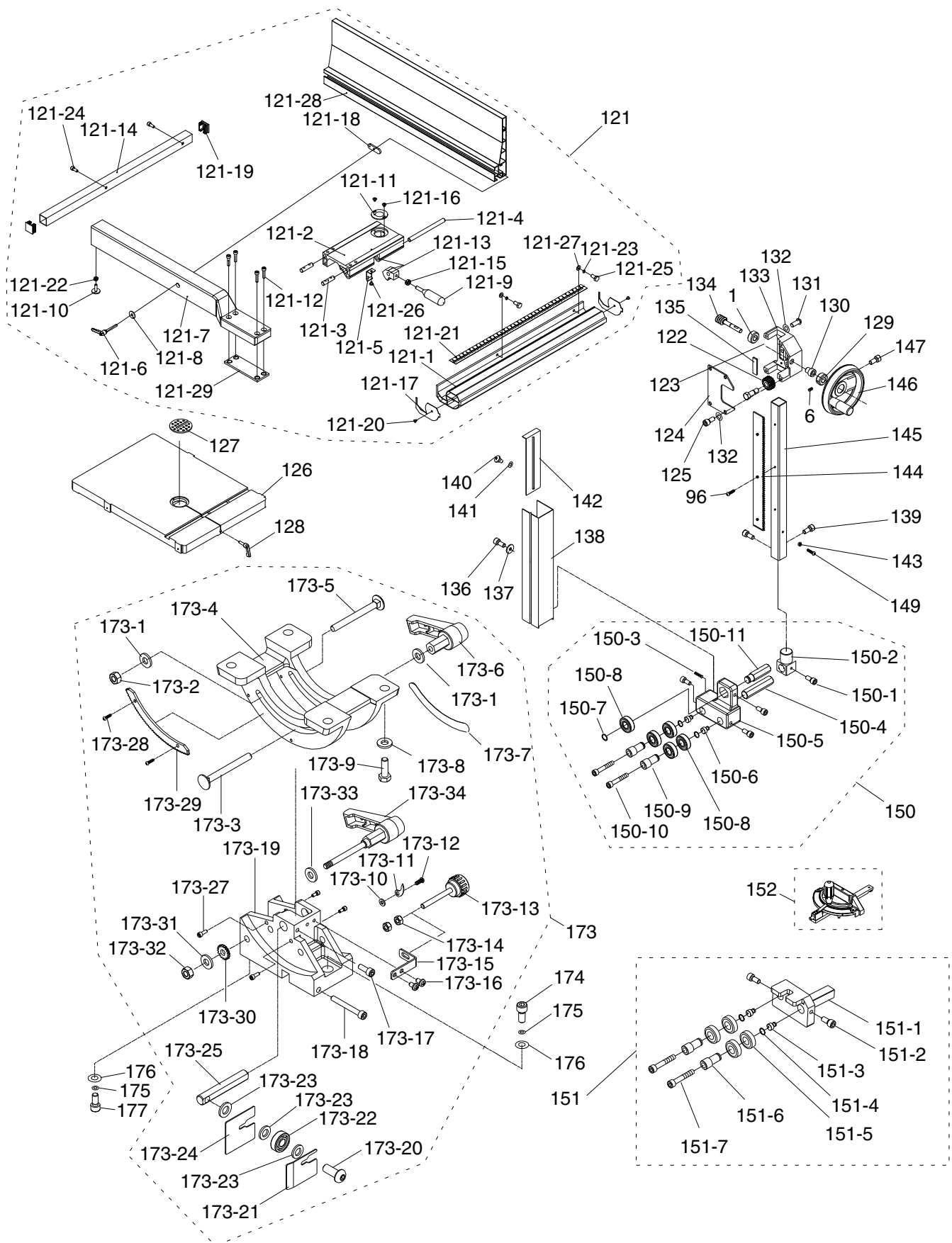
# Main Parts List

| REF   | PART #      | DESCRIPTION                            |
|-------|-------------|--|
| 103V2 | P0640X103V2 | SWITCH CONNECTOR CORD 20G 47" V2.12.20 |
| 104   | P0640X104   | BLADE HOOK                             |
| 105   | P0640X105   | PHLP HD SCR M4-.7 X 10                 |
| 106   | P0640X106   | MOTOR FAN CONNECTOR CORD 18G           |
| 107   | P0640X107   | CONNECTOR WIRE 14G                     |
| 109V2 | P0640X109V2 | TERMINAL BLOCK 221-413 3P V2.12.20     |
| 111   | P0640X111   | CAP SCREW M6-1 X 20                    |
| 112   | P0640X112   | TAP SCREW M4 X 8                       |
| 115V2 | P0640X115V2 | INVERTER COVER V2.12.20                |
| 116V2 | P0640X116V2 | INVERTER TECO L510-202-SH1-N V2.12.20  |
| 118V2 | P0640X118V2 | V-BELT A28                             |
| 119   | P0640X119   | IDLER PULLEY                           |
| 120   | P0640X120   | PULLEY SHAFT                           |
| 148   | P0640X148   | CORD CONNECTOR 224-201                 |
| 153   | P0640X153   | BALL BEARING 6204-2RS                  |
| 154   | P0640X154   | BEARING STAND                          |
| 155   | P0640X155   | LOCK WASHER 10MM                       |
| 156   | P0640X156   | HEX BOLT M10-1.5 X 25                  |
| 157   | P0640X157   | SET SCREW M6-1 X 6                     |
| 158   | P0640X158   | BELT TENSION HANDWHEEL                 |
| 159   | P0640X159   | FLANGE SCREW M6-1 X 10                 |

| REF | PART #    | DESCRIPTION                    |
|-----|-----------|--------------------------------|
| 160 | P0640X160 | ADJUSTING BOLT BRACKET         |
| 161 | P0640X161 | SELF-LUBRICATING BUSHING       |
| 162 | P0640X162 | ADJUSTING BOLT M10-1.5 X 227   |
| 163 | P0640X163 | BUTTON HD CAP SCR M8-1.25 X 20 |
| 164 | P0640X164 | CAP SCREW M10-1.5 X 35         |
| 165 | P0640X165 | SHAFT BOLT 18 X 14 X 37MM      |
| 166 | P0640X166 | ADJUSTING STAND                |
| 167 | P0640X167 | CAP SCREW M6-1 X 16            |
| 168 | P0640X168 | LOCK WASHER 6MM                |
| 169 | P0640X169 | FLAT WASHER 6MM                |
| 170 | P0640X170 | ADJUSTING BOLT END BRACKET     |
| 171 | P0640X171 | SPACER 60 X 5 X 8.5MM          |
| 172 | P0640X172 | FLAT WASHER 8MM                |
| 178 | P0640X178 | PULLEY SHAFT BUSHING           |
| 179 | P0640X179 | LOCK HANDLE                    |
| 180 | P0640X180 | PULLEY SHAFT BRACKET           |
| 181 | P0640X181 | HEX NUT M8-1.25                |
| 182 | P0640X182 | HANDLE                         |
| 183 | P0640X183 | FOAM TAPE 2 X 7 X 100MM        |
| 184 | P0640X184 | BUTTON HD CAP SCR M5-.8 X 8    |



# Fence & Blade Guides



# Fence & Blade Guides Parts List

| REF    | PART #       | DESCRIPTION                     |
|--------|--------------|---------------------------------|
| 1      | P0640X001    | BUSHING                         |
| 6      | P0640X006    | SET SCREW M5-.8 X 6             |
| 96     | P0640X096    | FLAT HD SCR M4-.7 X 8           |
| 121    | P0640X121    | FENCE ASSEMBLY 590MM            |
| 121-1  | P0640X121-1  | FRONT RAIL 640MM                |
| 121-2  | P0640X121-2  | FENCE BASE                      |
| 121-3  | P0640X121-3  | FIXED SHAFT                     |
| 121-4  | P0640X121-4  | LOCK SHAFT                      |
| 121-5  | P0640X121-5  | SPRING PIECE 5 X 34 X 15 X 19MM |
| 121-6  | P0640X121-6  | LOCK HANDLE M8-1.25 X 44        |
| 121-7  | P0640X121-7  | FENCE 590MM                     |
| 121-8  | P0640X121-8  | FLAT WASHER 8MM                 |
| 121-9  | P0640X121-9  | FENCE HANDLE M8-1.25 X 22       |
| 121-10 | P0640X121-10 | RAIL PAD                        |
| 121-11 | P0640X121-11 | CONVEX WINDOW                   |
| 121-12 | P0640X121-12 | CAP SCREW M6-1 X 25             |
| 121-13 | P0640X121-13 | LOCK BLOCK                      |
| 121-14 | P0640X121-14 | REAR RAIL 640MM                 |
| 121-15 | P0640X121-15 | HEX NUT M8-1.25                 |
| 121-16 | P0640X121-16 | FLANGE SCREW M4-.7 X 6          |
| 121-17 | P0640X121-17 | FRONT RAIL END PLATE            |
| 121-18 | P0640X121-18 | T-SLOT NUT R10 SLOT M8 X 1.25   |
| 121-19 | P0640X121-19 | REAR RAIL END PLUG              |
| 121-20 | P0640X121-20 | TAP SCREW M3.5 X 8              |
| 121-21 | P0640X121-21 | FENCE SCALE                     |
| 121-22 | P0640X121-22 | HEX NUT M6-1                    |
| 121-23 | P0640X121-23 | LOCK WASHER 6MM                 |
| 121-24 | P0640X121-24 | CAP SCREW M6-1 X 16             |
| 121-25 | P0640X121-25 | HEX BOLT M6-1 X 20              |
| 121-26 | P0640X121-26 | FLANGE BOLT M4-.7 X 8           |
| 121-27 | P0640X121-27 | FLAT WASHER 6MM                 |
| 121-28 | P0640X121-28 | RESAW FENCE 590MM               |
| 121-29 | P0640X121-29 | SPACER PLATE                    |
| 122    | P0640X122    | GEAR 12T/20T                    |
| 123    | P0640X123    | GEAR BOLT                       |
| 124    | P0640X124    | GUIDE BRACKET COVER             |
| 125    | P0640X125    | CAP SCREW M8-1.25 X 16          |
| 126    | P0640X126    | TABLE 17" X 24"                 |
| 127    | P0640X127    | TABLE INSERT                    |
| 128    | P0640X128    | TABLE PIN 8 X 29 X R4.5         |
| 129    | P0640X129    | HANDWHEEL BUSHING               |

| REF    | PART #       | DESCRIPTION                    |
|--------|--------------|--------------------------------|
| 130    | P0640X130    | BUSHING                        |
| 131    | P0640X131    | BUTTON HD CAP SCR M8-1.25 X 20 |
| 132    | P0640X132    | LOCK WASHER 8MM                |
| 133    | P0640X133    | GUIDE BRACKET                  |
| 134    | P0640X134    | WORM SHAFT                     |
| 135    | P0640X135    | FIXED PLATE                    |
| 136    | P0640X136    | CAP SCREW M5-.8 X 10           |
| 137    | P0640X137    | FLAT WASHER 5MM                |
| 138    | P0640X138    | PROTECT COVER                  |
| 139    | P0640X139    | CAP SCREW M6-1 X 16            |
| 140    | P0640X140    | STEP SCREW M4-.7 X 5           |
| 141    | P0640X141    | FIBER WASHER 6 X 13MM          |
| 142    | P0640X142    | SLIDING PLATE                  |
| 143    | P0640X143    | HEX NUT M4-.7                  |
| 144    | P0640X144    | GUIDE POST RACK                |
| 145    | P0640X145    | GUIDE POST                     |
| 146    | P0640X146    | GUIDE POST HANDWHEEL           |
| 147    | P0640X147    | CAP SCREW M6-1 X 20            |
| 149    | P0640X149    | PHLP HD SCR M4-.7 X 10         |
| 150    | P0640X150    | UPPER BLADE GUIDE ASSEMBLY     |
| 150-1  | P0640X150-1  | CAP SCREW M6-1 X 16            |
| 150-2  | P0640X150-2  | UPPER GUIDE SUPPORT BLOCK      |
| 150-3  | P0640X150-3  | SET SCREW M6-1 X 10            |
| 150-4  | P0640X150-4  | BLADE GUIDE ADJUSTMENT SHAFT   |
| 150-5  | P0640X150-5  | UPPER BLADE GUIDE SUPPORT      |
| 150-6  | P0640X150-6  | ECCENTRIC SHAFT                |
| 150-7  | P0640X150-7  | EXT RETAINING RING 15MM        |
| 150-8  | P0640X150-8  | BALL BEARING 6202ZZ            |
| 150-9  | P0640X150-9  | KNURLED KNOB BUSHING           |
| 150-10 | P0640X150-10 | CAP SCREW M6-1 X 35            |
| 150-11 | P0640X150-11 | SUPPORT BEARING SHAFT          |
| 151    | P0640X151    | LOWER BLADE GUIDE ASSEMBLY     |
| 151-1  | P0640X151-1  | LOWER BLADE GUIDE SUPPORT      |
| 151-2  | P0640X151-2  | CAP SCREW M6-1 X 16            |
| 151-3  | P0640X151-3  | ECCENTRIC SHAFT                |
| 151-4  | P0640X151-4  | EXT RETAINING RING 15MM        |
| 151-5  | P0640X151-5  | BALL BEARING 6202ZZ            |
| 151-6  | P0640X151-6  | KNURLED KNOB BUSHING           |
| 151-7  | P0640X151-7  | CAP SCREW M6-1 X 35            |
| 152    | P0640X152    | MITER GAUGE ASSEMBLY           |



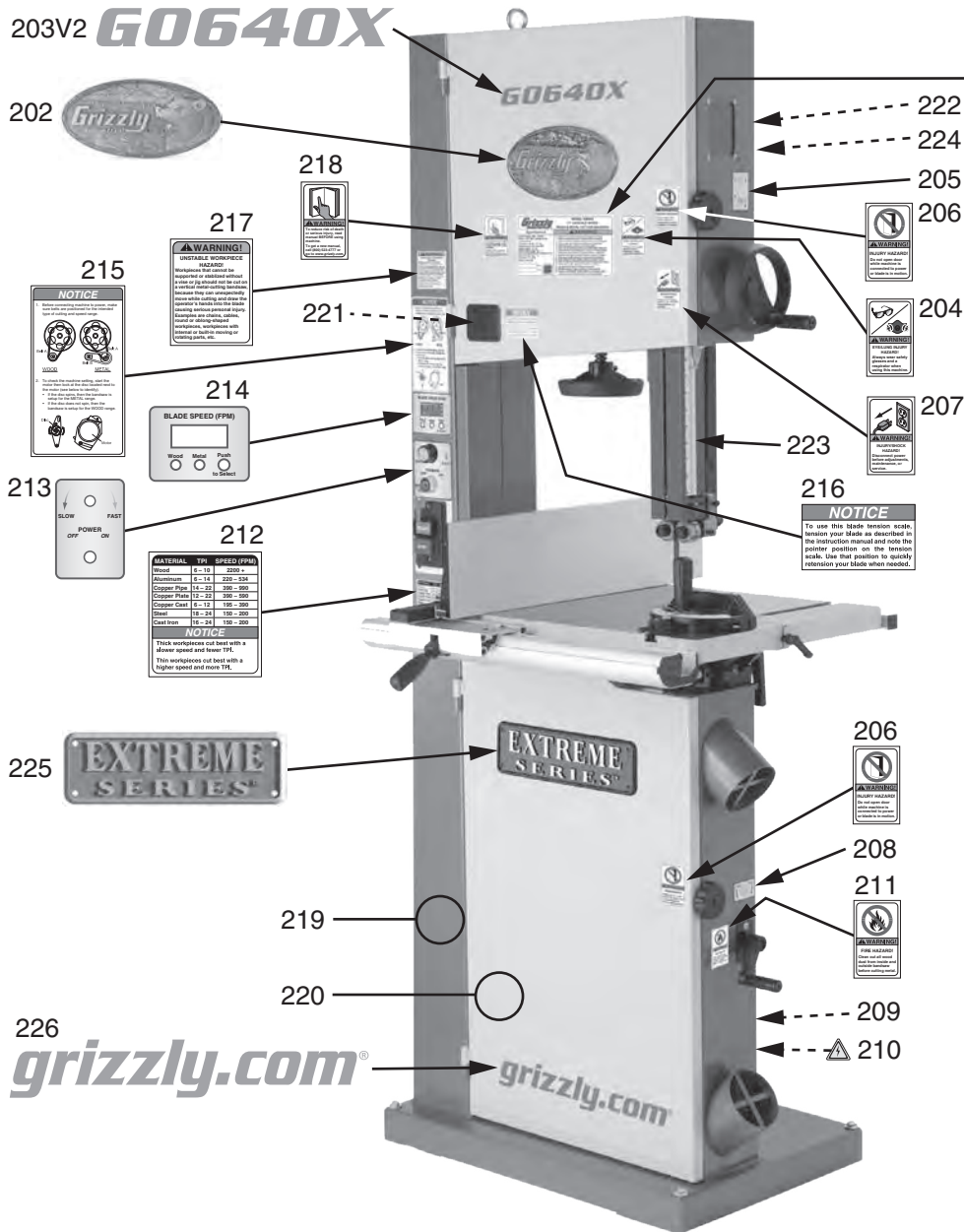
# Fence & Blade Guides Parts List

| REF    | PART #       | DESCRIPTION                 |
|--------|--------------|-----------------------------|
| 173    | P0640X173    | CAST-IRON TRUNNION ASSEMBLY |
| 173-1  | P0640X173-1  | FLAT WASHER 8MM             |
| 173-2  | P0640X173-2  | LOCK NUT M8-1.25            |
| 173-3  | P0640X173-3  | CARRIAGE BOLT M8-1.25 X 85  |
| 173-4  | P0640X173-4  | UPPER TRUNNION              |
| 173-5  | P0640X173-5  | CARRIAGE BOLT M8-1.25 X 80  |
| 173-6  | P0640X173-6  | LOCK HANDLE M8-1.25         |
| 173-7  | P0640X173-7  | ANGLE LABEL                 |
| 173-8  | P0640X173-8  | FLAT WASHER 8MM             |
| 173-9  | P0640X173-9  | HEX BOLT M8-1.25 X 25       |
| 173-10 | P0640X173-10 | FLAT WASHER 4MM             |
| 173-11 | P0640X173-11 | TABLE TILT POINTER          |
| 173-12 | P0640X173-12 | PHLP HD SCR M4-.7 X 6       |
| 173-13 | P0640X173-13 | ADJUSTMENT KNOB BOLT M6-1   |
| 173-14 | P0640X173-14 | HEX NUT M6-1                |
| 173-15 | P0640X173-15 | L-BRACKET                   |
| 173-16 | P0640X173-16 | FLAT HD SCR M5-.8 X 15      |
| 173-17 | P0640X173-17 | CAP SCREW M6-1 X 16         |
| 173-18 | P0640X173-18 | CAP SCREW M6-1 X 50         |

| REF    | PART #       | DESCRIPTION                    |
|--------|--------------|--------------------------------|
| 173-19 | P0640X173-19 | TRUNNION SUPPORT BRACKET       |
| 173-20 | P0640X173-20 | BUTTON HD CAP SCR M10-1.5 X 30 |
| 173-21 | P0640X173-21 | RIGHT BLADE GUARD              |
| 173-22 | P0640X173-22 | BALL BEARING 6000ZZ            |
| 173-23 | P0640X173-23 | FLAT WASHER 10MM               |
| 173-24 | P0640X173-24 | LEFT BLADE GUARD               |
| 173-25 | P0640X173-25 | SUPPORT BEARING SHAFT          |
| 173-27 | P0640X173-27 | CAP SCREW M5-.8 X 6            |
| 173-28 | P0640X173-28 | PHLP HD SCR M4-.7 X 6          |
| 173-29 | P0640X173-29 | TRUNNION RACK                  |
| 173-30 | P0640X173-30 | TRUNNION PINION                |
| 173-31 | P0640X173-31 | FLAT WASHER 8MM                |
| 173-32 | P0640X173-32 | LOCK NUT M8-1.25               |
| 173-33 | P0640X173-33 | FLAT WASHER 12MM               |
| 173-34 | P0640X173-34 | TABLE TILT HANDLE              |
| 174    | P0640X174    | CAP SCREW M10-1.5 X 30         |
| 175    | P0640X175    | LOCK WASHER 10MM               |
| 176    | P0640X176    | FLAT WASHER 10MM               |
| 177    | P0640X177    | CAP SCREW M10-1.5 X 35         |



# Labels & Cosmetics



| Grizzly  |                                   | MODEL G0640X            | 201V2             |
|--|-----------------------------------|-------------------------|-------------------|
| WOOD & METAL CUTTING BANDSAW   |                                   | 17" VARIABLE SPEED      |                   |
| <b>Specifications</b>  |                                   |                         |                   |
| Blade Type: 10" - 18" Bands, 1/8"  | Blade Size: 10" - 18" Bands, 1/8" | Blade Length: 10" - 18" | Blade Width: 1/8" |
| Blade Type: 10" - 18" Bands, 1/8"  | Blade Size: 10" - 18" Bands, 1/8" | Blade Length: 10" - 18" | Blade Width: 1/8" |
| <b>WARNING!</b>  |                                   |                         |                   |
| 1. Read and understand all safety instructions before operating.                                 |                                   |                         |                   |
| 2. Never use damaged or worn equipment.  |                                   |                         |                   |
| 3. Always wear appropriate eye protection and hearing protection.                                |                                   |                         |                   |
| 4. Only qualified personnel should be permitted to operate.                                      |                                   |                         |                   |
| 5. Only use the correct blade for the material being cut.  |                                   |                         |                   |
| 6. Use proper work techniques to avoid kickback or other accidents.                              |                                   |                         |                   |
| 7. Never use the machine if you are tired, under the influence of alcohol, drugs, or medication. |                                   |                         |                   |
| 8. Keep your work area clean and free of clutter.  |                                   |                         |                   |
| 9. Never use the machine if you are not properly trained.  |                                   |                         |                   |
| 10. Never use the machine if you are not properly trained.                                       |                                   |                         |                   |
| 11. Do not use the machine if you are not properly trained.                                      |                                   |                         |                   |
| 12. Do not use the machine if you are not properly trained.                                      |                                   |                         |                   |
| 13. Do not use the machine if you are not properly trained.                                      |                                   |                         |                   |
| 14. Do not use the machine if you are not properly trained.                                      |                                   |                         |                   |
| 15. Do not use the machine if you are not properly trained.                                      |                                   |                         |                   |
| 16. Do not use the machine if you are not properly trained.                                      |                                   |                         |                   |
| 17. Do not use the machine if you are not properly trained.                                      |                                   |                         |                   |
| 18. Do not use the machine if you are not properly trained.                                      |                                   |                         |                   |
| 19. Do not use the machine if you are not properly trained.                                      |                                   |                         |                   |
| 20. Do not use the machine if you are not properly trained.                                      |                                   |                         |                   |

**! WARNING**

Safety labels warn about machine hazards and ways to prevent injury. The owner of this machine **MUST** maintain the original location and readability of the labels on the machine. If any label is removed or becomes unreadable, **REPLACE** that label before using the machine again. Contact Grizzly at (800) 523-4777 or [www.grizzly.com](http://www.grizzly.com) to order new labels.

| REF   | PART #      | DESCRIPTION                  |
|-------|-------------|------------------------------|
| 201V2 | P0640X201V2 | MACHINE ID LABEL V2.01.14    |
| 202   | P0640X202   | GRIZZLY NAMEPLATE            |
| 203V2 | P0640X203V2 | MODEL NUMBER LABEL V2.01.14  |
| 204   | P0640X204   | GLASSES RESPIRATOR LABEL     |
| 205   | P0640X205   | GUIDE POST ADJUSTMENT LABEL  |
| 206   | P0640X206   | DOOR CLOSED LABEL            |
| 207   | P0640X207   | DISCONNECT POWER LABEL       |
| 208   | P0640X208   | HANDLE CRANK DIRECTION LABEL |
| 209   | P0640X209   | SPIRAL INDICATOR LABEL       |
| 210   | P0640X210   | ELECTRICITY LABEL            |
| 211   | P0640X211   | FIRE HAZARD WARNING LABEL    |
| 212   | P0640X212   | CUTTING SPEED LABEL          |
| 213   | P0640X213   | CONTROLS LABEL               |

| REF | PART #    | DESCRIPTION                   |
|-----|-----------|-------------------------------|
| 214 | P0640X214 | SPEED DISPLAY LABEL           |
| 215 | P0640X215 | BELT CHANGE LABEL             |
| 216 | P0640X216 | BLADE TENSION LABEL           |
| 217 | P0640X217 | UNSTABLE WORKPIECE LABEL      |
| 218 | P0640X218 | READ MANUAL LABEL             |
| 219 | P0640X219 | TOUCH-UP PAINT, GRIZZLY GREEN |
| 220 | P0640X220 | TOUCH-UP PAINT, GRIZZLY PUTTY |
| 221 | P0640X221 | BLADE TENSION SCALE LABEL     |
| 222 | P0640X222 | BLADE TENSIONING LEVER LABEL  |
| 223 | P0640X223 | GUIDE POST SCALE              |
| 224 | P0640X224 | TENSION ADJUSTMENT LABEL      |
| 225 | P0640X225 | EXTREME SERIES NAMEPLATE      |
| 226 | P0640X226 | GRIZZLY.COM LABEL             |

