

READ THIS FIRST



Model G0656/P/PX/X

IMPORTANT UPDATE

For Machines Mfg. Since April, 2014
& Owner's Manual Printed September, 2009

The following changes were recently made to these machines since the owner's manual was printed:

- Now CSA certified to meet CSA 22.2 #71.2-08 and UL 987-7th standards.
- Changed the motor nominal voltage from 220V to 240V.
- Added a power cord with an included plug.

This document provides relevant updates to portions of the owner's manual that no longer apply and additional information required by CSA—aside from this information, all other content in the owner's manual applies and **MUST** be read and understood for your own safety. **IMPORTANT: Keep this update with the owner's manual for future reference.** For questions or help, contact our Tech Support at (570) 546-9663 or techsupport@grizzly.com.

Changed Specifications

Electrical

Power Requirement.....240V, Single-Phase, 60 Hz
 Minimum Circuit Size20A
 Power Cord Gauge12 AWG
 Included Plug Type6-20

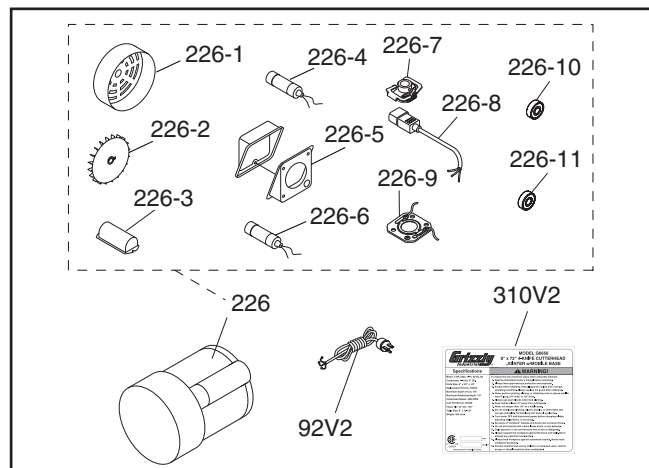
Motor

Voltage240V
 Amps15A

Operation Info

Cutterhead Speed.....4800 RPM

New/Revised G0656/P/PX/X Parts



REF	PART #	DESCRIPTION
92V2	P0656092V2	PWR CORD 12G 3W 72" 6-20P V2.04.14
226	P0656226	MOTOR 3PH 240V 1-PH
226-1	P0656226-1	MOTOR FAN COVER
226-2	P0656226-2	MOTOR FAN
226-3	P0656226-3	CAPACITOR COVER
226-4	P0656226-4	R CAPACITOR 30M 450V 1-1/2 x 2-3/4
226-5	P0656226-5	MOTOR JUNCTION BOX
226-6	P0656226-6	S CAPACITOR 200M 250V 1-1/2 X 3-1/2
226-7	P0656226-7	CENTRIFUGAL SWITCH 16MM 3450
226-8	P0656226-8	MOTOR CORD 14AWG X 3C
226-9	P0656226-9	CONTACT PLATE 16MM
226-10	P6204ZZ	BALL BEARING 6204ZZ
226-11	P6203ZZ	BALL BEARING 6203ZZ
310V2	P0656310V2	ID LABEL CSA V2.08.12 (G0656)
* 310V2	P0656P310V2	ID LABEL CSA V2.08.12 (G0656P)
* 310V2	P0656PX310V2	ID LABEL CSA V2.08.12 (G0656PX)
* 310V2	P0656X310V2	ID LABEL CSA V2.08.12 (G0656X)

* Not Shown on Diagram



COPYRIGHT © AUGUST, 2012 BY GRIZZLY INDUSTRIAL, INC., REVISED APRIL, 2014 (ST)

WARNING: NO PORTION OF THIS MANUAL MAY BE REPRODUCED IN ANY SHAPE OR FORM WITHOUT THE WRITTEN APPROVAL OF GRIZZLY INDUSTRIAL, INC.

#BLTS15233 PRINTED IN CHINA

Table Parts Breakdown

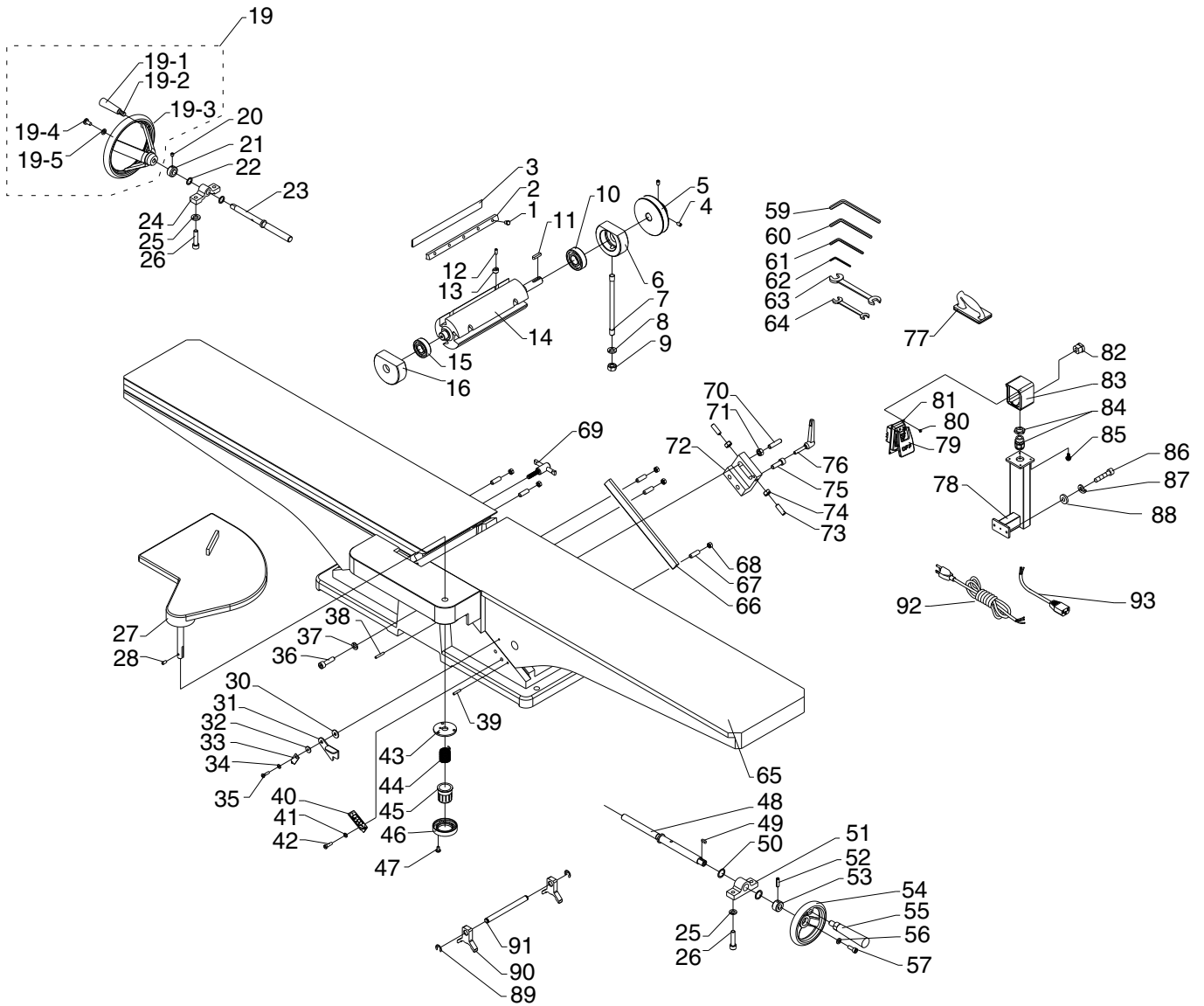


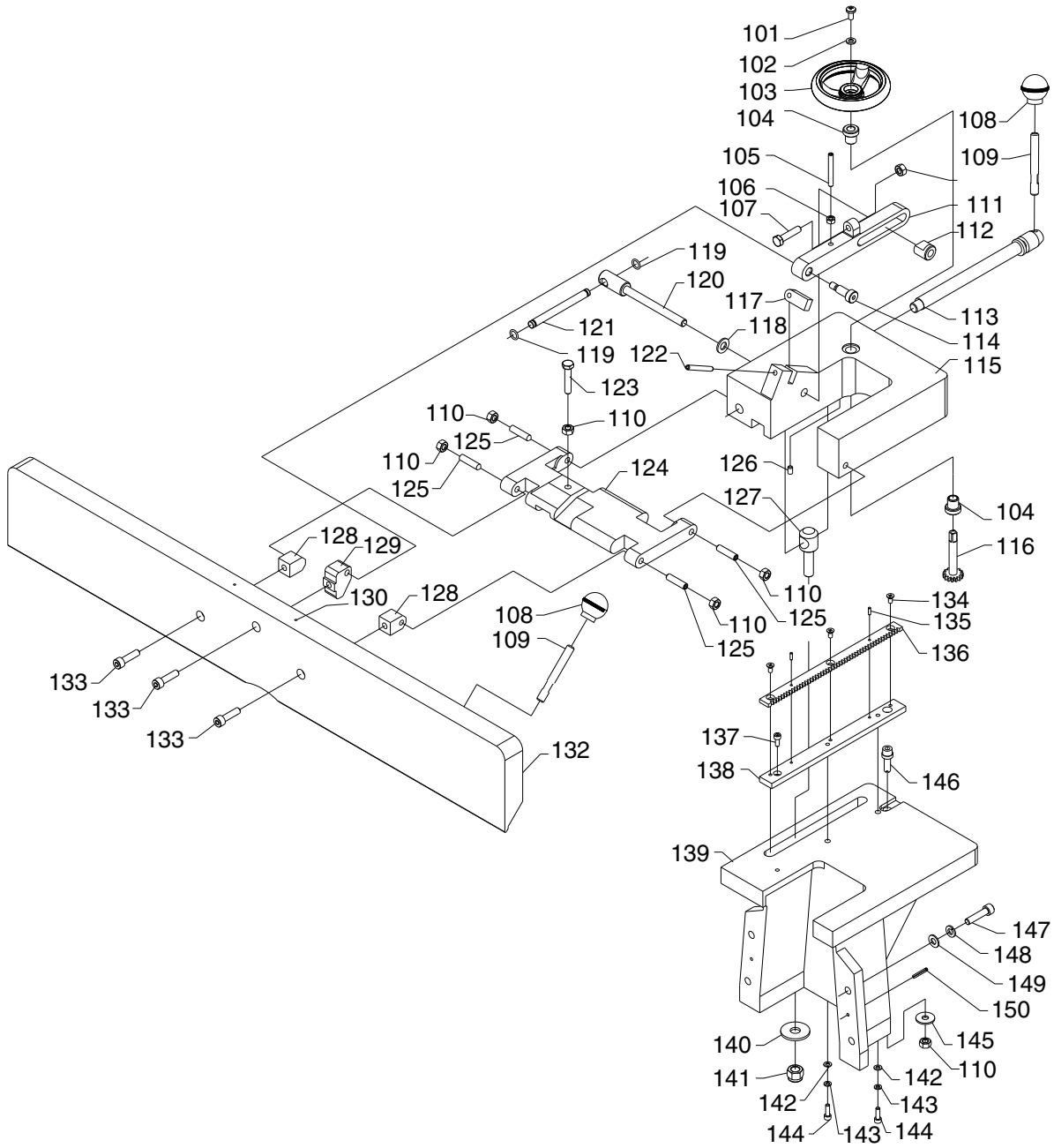
Table Parts List

REF	PART #	DESCRIPTION
1	P0656001	GIB BOLT
2	P0656002	GIB
3	P0656003	KNIFE
4	PSS01M	SET SCREW M6-1 X 10
5	P0656005	PULLEY
6	P0656006	RIGHT BEARING SUPPORT BLOCK
7	P0656007	STUD
8	PLW06M	LOCK WASHER 10MM
9	PN02M	HEX NUT M10-1.5
10	P6204	BALL BEARING 6204ZZ
11	PK12M	KEY 5 X 5 X 30
12	PSS53M	SET SCREW M5-.8 X 12
13	P0656013	SPECIAL NUT
14	P0656014	CUTTERHEAD
15	P6203	BALL BEARING 6203ZZ
16	P0656016	LEFT BEARING SUPPORT BLOCK
19	P0656019	HANDWHEEL ASSY
19-1	P0656019-1	HANDLE
19-2	P0656019-2	SHOULDER SCREW
19-3	P0656019-3	HANDWHEEL
19-4	PSB26M	CAP SCREW M6-1 X 12
19-5	PW03M	FLAT WASHER 6MM
20	PSS02M	SET SCREW M6-1 X 6
21	P0656021	COLLAR
22	P0656022	SPECIAL FLAT WASHER
23	P0656023	SCREW SHAFT
24	P0656024	BLOCK
25	PLW04M	LOCK WASHER 8MM
26	PSB40M	CAP SCREW M8-1.25 X 35
27	P0656027	CUTTERHEAD GUARD
28	PSS53M	SET SCREW M5-.8 X 12
30	P0656030	SPACER
31	P0656031	STOP LEVER
32	PW05M	FLAT WASHER 4MM
33	P0656033	POINTER
34	PW05M	FLAT WASHER 4MM
35	PS21M	PHLP HD SCR M4-.7 X 15
36	PSB40M	CAP SCREW M8-1.25 X 35
37	PLW04M	LOCK WASHER 8MM
38	PRP56M	ROLL PIN 4 X 25
39	P0656039	ALIGNMENT PIN 4 X 20
40	P0656040	DEPTH SCALE
41	PLW01M	LOCK WASHER 5MM
42	PSB24M	CAP SCREW M5-.8 X 16
43	P0656043	PLATE
44	P0656044	TORSION SPRING
45	P0656045	CUP

REF	PART #	DESCRIPTION
46	P0656046	RETAINER
47	PSB53M	CAP SCREW M5-.8 X 18
48	P0656048	SCREW SHAFT
49	PK69M	KEY 4 X 4 X 12
50	P0656050	SPACER
51	P0656051	BLOCK
52	PRP49M	ROLL PIN 5 X 25
53	P0656053	COLLAR
54	P0656054	HANDWHEEL
55	P0656055	HANDLE
56	P0656056	SPECIAL FLAT WASHER
57	PSB26M	CAP SCREW M6-1 X 12
59	PAW06M	HEX WRENCH 6MM
60	PAW04M	HEX WRENCH 4MM
61	PAW03M	HEX WRENCH 3MM
62	PAW02.5M	HEX WRENCH 2.5MM
63	PWR1214	WRENCH 12 X 14
64	PWR810	WRENCH 8 X 10
65	P0656065	TABLE ASSY
66	P0656066	GIB
67	PSS12M	SET SCREW M6-1 X 25
68	PN01M	HEX NUT M6-1
69	P0656069	OUTFEED TABLE LOCK M6-1 X 25
70	P0656070	SPECIAL SCREW
71	PN01M	HEX NUT M6-1
72	P0656072	STOP BLOCK
73	PSS21M	SET SCREW M8-1.25 X 25
74	PN03M	HEX NUT M8-1.25
75	PSB31M	CAP SCREW M8-1.25 X 25
76	P0656076	INFEED LOCK LEVER M6-1 X 30
77	P0656077	JOINTER PUSH BLOCK
78	P0656078	SWITCH PEDESTAL
79	P0656079	SWITCH PADDLE
80	PSB18M	CAP SCREW M4-.7 X 8
81	P0656081	SWITCH BRACKET
82	P0656082	STRAIN RELIEF
83	P0656083	SWITCH BOX
84	P0656084	STRAIN RELIEF
85	PFB17M	FLANGE BOLT M6-1 X 16
86	PSB31M	CAP SCREW M8-1.25 X 25
87	PLW04M	LOCK WASHER 8MM
88	PW01M	FLAT WASHER 8MM
89	PR39M	EXT RETAINING RING 8MM
90	P0656090	KNIFE GAUGE BLOCK
91	P0656091	KNIFE GAUGE ROD
92	P0656092	POWER CORD 14AWG X 3C
93	P0656093	SWITCH CORD 14AWG X 3C



Fence Parts Breakdown



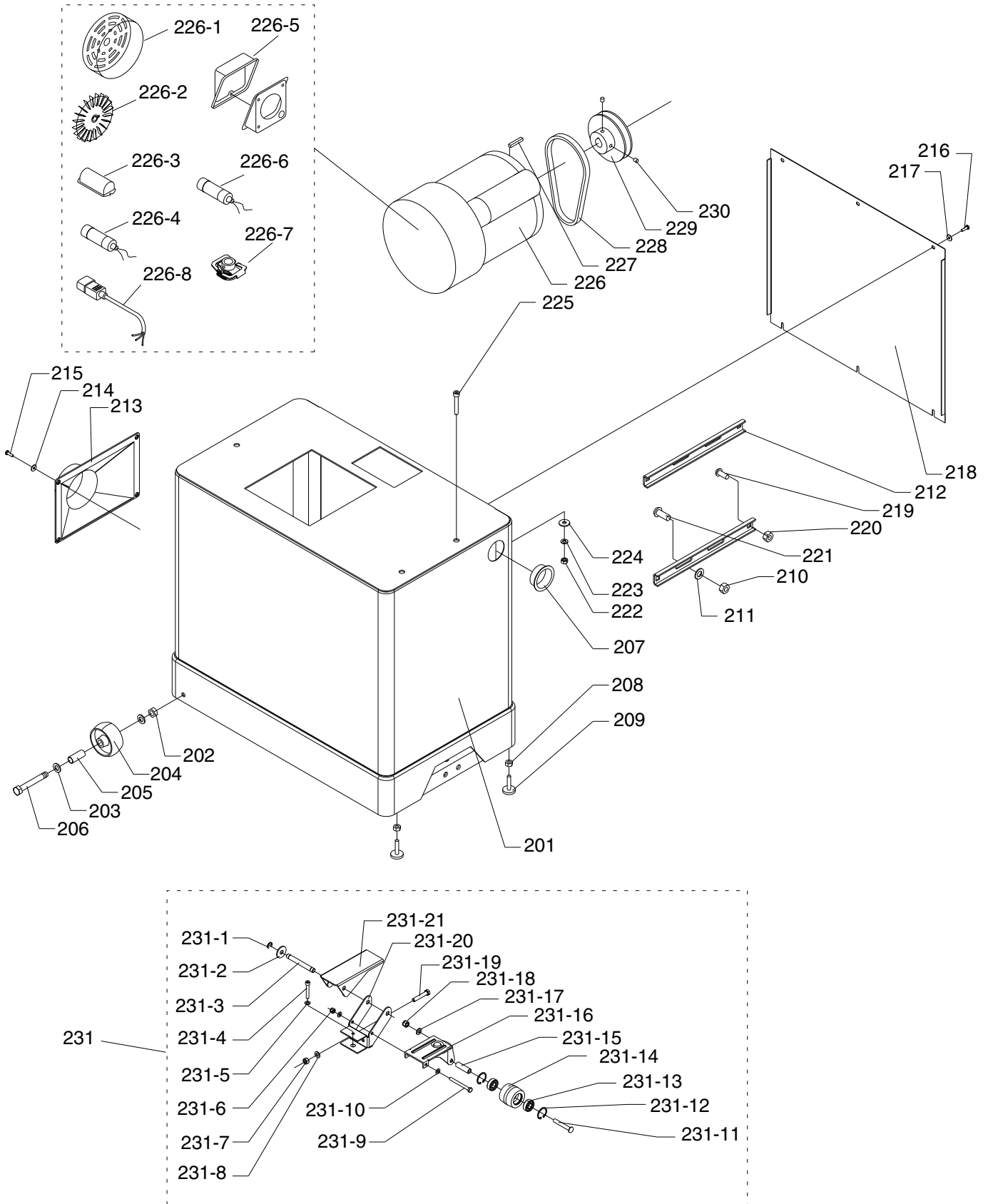
Fence Parts List

REF	PART #	DESCRIPTION
101	PS14M	PHLP HD SCR M6-1 X 12
102	PW03M	FLAT WASHER 6MM
103	P0656103	HANDWHEEL
104	P0656104	BUSHING
105	PSS85M	SET SCREW M6-1 X 45
106	PN01M	HEX NUT M6-1
107	PB20M	HEX BOLT M8-1.25 X 35
108	P0656108	KNOB M10-1.5
109	P0656109	STUD M10-1.5
110	PN03M	HEX NUT M8-1.25
111	P0656111	CLAMP ARM
112	P0656112	LOCK NUT
113	P0656113	ECCENTRIC LOCK LEVER
114	P0656114	SPECIAL SCREW M10-1.5 X 20
115	P0656115	FENCE CARRIAGE
116	P0656116	GEAR
117	P0656117	90 DEG STOP BLOCK
118	PW04M	FLAT WASHER 10MM
119	POR0010	O-RING 10 X 2
120	P0656120	TILT LOCK SHAFT
121	P0656121	TILT LOCK HANDLE
122	P0656122	ALIGNMENT PIN 6 X 50
123	PB15M	HEX BOLT M8-1.25 X 40
124	P0656124	BRACKET
125	PSS74M	SET SCREW M8-1.25 X 35

REF	PART #	DESCRIPTION
126	PSS01M	SET SCREW M6-1 X 10
127	P0656127	ADJUST LEVER
128	P0656128	SMALL BRACKET BLOCK
129	P0656129	BRACKET BLOCK
130	P0656130	RIVET 2 X 4
132	P0656132	FENCE
133	PSB13M	CAP SCREW M8-1.25 X 30
134	PFH07M	FLAT HD SCR M5-.8 X 10
135	PRP44M	ROLL PIN 3 X 10
136	P0656136	RACK
137	PSB20M	CAP SCREW M5-.8 X 14
138	P0656138	GIB
139	P0656139	FENCE SUPPORT
140	PW06M	FLAT WASHER 12MM
141	P0656141	SPECIAL HEX NUT M12-1.75
142	PW02M	FLAT WASHER 5MM
143	PLW01M	LOCK WASHER 5MM
144	PSB53M	CAP SCREW M5-.8 X 18
145	P0656145	SPECIAL FLAT WASHER
146	P0656146	ECCENTRIC STUD
147	PSB40M	CAP SCREW M8-1.25 X 35
148	PLW04M	LOCK WASHER 8MM
149	PW01M	FLAT WASHER 8MM
150	PRP49M	ROLL PIN 5 X 25



Stand Parts Breakdown



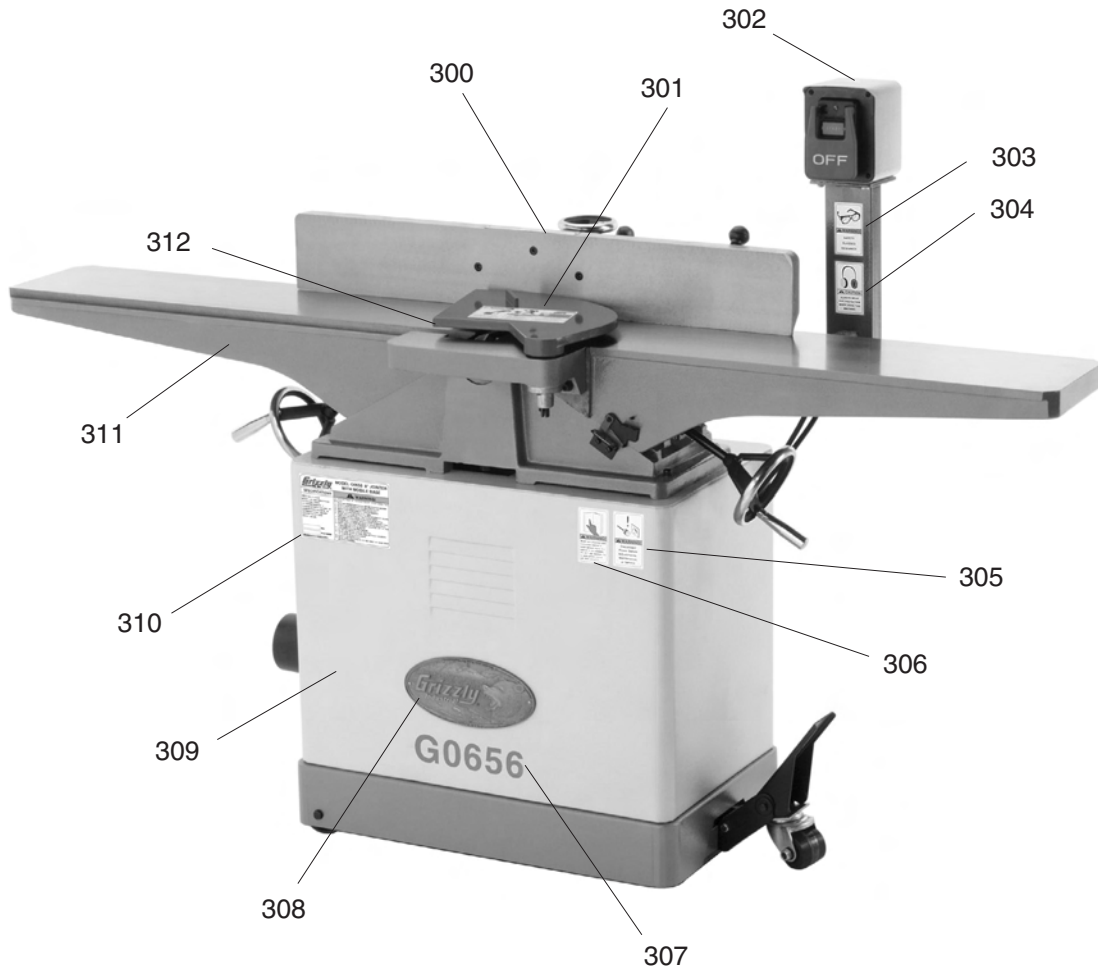
Stand Parts List

REF	PART #	DESCRIPTION
201	P0656201	CABINET
202	PLN04M	LOCK NUT M8-1.25
203	PW01M	FLAT WASHER 8MM
204	P0656204	WHEEL
205	P0656205	SLEEVE
206	PB86M	HEX BOLT M8-1.25 X 65
207	P0656207	PLASTIC GROMMET
208	PN08	HEX NUT 3/8-16
209	P0656209	ADJUSTING SCREW
210	PN02	HEX NUT 5/16-18
211	PW07	FLAT WASHER 5/16
212	P0656212	MOTOR BRACKET
213	P0656213	DUST PORT
214	PW02M	FLAT WASHER 5MM
215	PS40M	PHLP HD SCR M5-.8 X 16
216	PS40M	PHLP HD SCR M5-.8 X 16
217	PW02M	FLAT WASHER 5MM
218	P0656218	CABINET REAR COVER
219	PCB05	CARRIAGE BOLT 5/16-18 X 3/4
220	PN02	HEX NUT 5/16-18
221	PCB11	CARRIAGE BOLT 5/16-18 X 1
222	PN03M	HEX NUT M8-1.25
223	PLW04M	LOCK WASHER 8MM
224	PW01M	FLAT WASHER 8MM
225	PSB05M	CAP SCREW M8-1.25 X 50
226	P0656226	MOTOR 3PH 220V
226-1	P0656226-1	FAN COVER
226-2	P0656226-2	FAN
226-3	P0656226-3	R CAPACITOR COVER
226-4	P0656226-4	R CAP 30M 450V 2-3/4 X 1-1/2

REF	PART #	DESCRIPTION
226-5	P0656226-5	JUNCTION BOX
226-6	P0656226-6	S CAPACITOR 200M 250V 3-1/2 X 1-1/2
226-7	P0656226-7	CENTRIFUGAL SWITCH
226-8	P0656226-8	MOTOR CORD 14AWG X 3C
227	PK12M	KEY 5 X 5 X 30
228	PVA48	V-BELT A-48
229	P0656229	MOTOR PULLEY
230	PSS01M	SET SCREW M6-1 X 10
231	P0656231	PEDAL ASSEMBLY
231-1	PR16M	EXT RETAINING RING 9MM
231-2	P0656231-2	SPECIAL FLAT WASHER
231-3	P0656231-3	SHAFT
231-4	PB22M	HEX BOLT M8-1.25 X 50
231-5	PW01M	FLAT WASHER 8MM
231-6	P0656231-6	SPECIAL HEX NUT M8-1.25
231-7	PN02M	HEX NUT M10-1.5
231-8	PW04M	FLAT WASHER 10MM
231-9	PB45M	HEX BOLT M8-1.25 X 100
231-10	PW01M	FLAT WASHER 8MM
231-11	P0656231-11	SPECIAL BOLT
231-12	PR21M	INT RETAINING RING 35MM
231-13	P6202	BALL BEARING 6202ZZ
231-14	P0656231-14	TROLLEY WHEEL
231-15	P0656231-15	SLEEVE
231-16	P0656231-16	UNIVERSAL KIT TROLLEY
231-17	PW04M	FLAT WASHER 10MM
231-18	P0656231-18	SPECIAL HEX NUT M10
231-19	PB144M	HEX BOLT M10-1.5 X 55
231-20	P0656231-20	BRACKET
231-21	P0656231-21	PEDAL



Label Placement



REF	PART #	DESCRIPTION
300	P0656300	FENCE/CUTTERHEAD LABEL
301	P0656301	CUTTERHEAD GUARD LABEL
302	PLABEL-14	ELECTRICITY LABEL
303	PLABEL-11	SAFETY GLASSES 2" X 3 5/16"
304	PLABEL-15	EAR PROTECTION 2" X 3-5/16"H
305	P0656305	UNPLUG 220V POWER LABEL
306	PLABEL-12A	READ MANUAL-VERTICAL NS 7/05

REF	PART #	DESCRIPTION
307	P0656307	MODEL NUMBER LABEL
308	G8588	SMALL GRIZZLY NAMEPLATE
309	PPAINT-11	PUTTY TOUCH-UP PAINT
310	P0656310	MACHINE ID LABEL
311	P-PAINT1	GRIZZLY GREEN TOUCH-UP PAINT
312	P0656312	RED TOUCH-UP PAINT

WARNING

Safety labels warn about machine hazards and ways to prevent injury. The owner of this machine **MUST** maintain the original location and readability of the labels on the machine. If any label is removed or becomes unreadable, **REPLACE** that label before using the machine again. Contact Grizzly at (800) 523-4777 or www.grizzly.com to order new labels.

