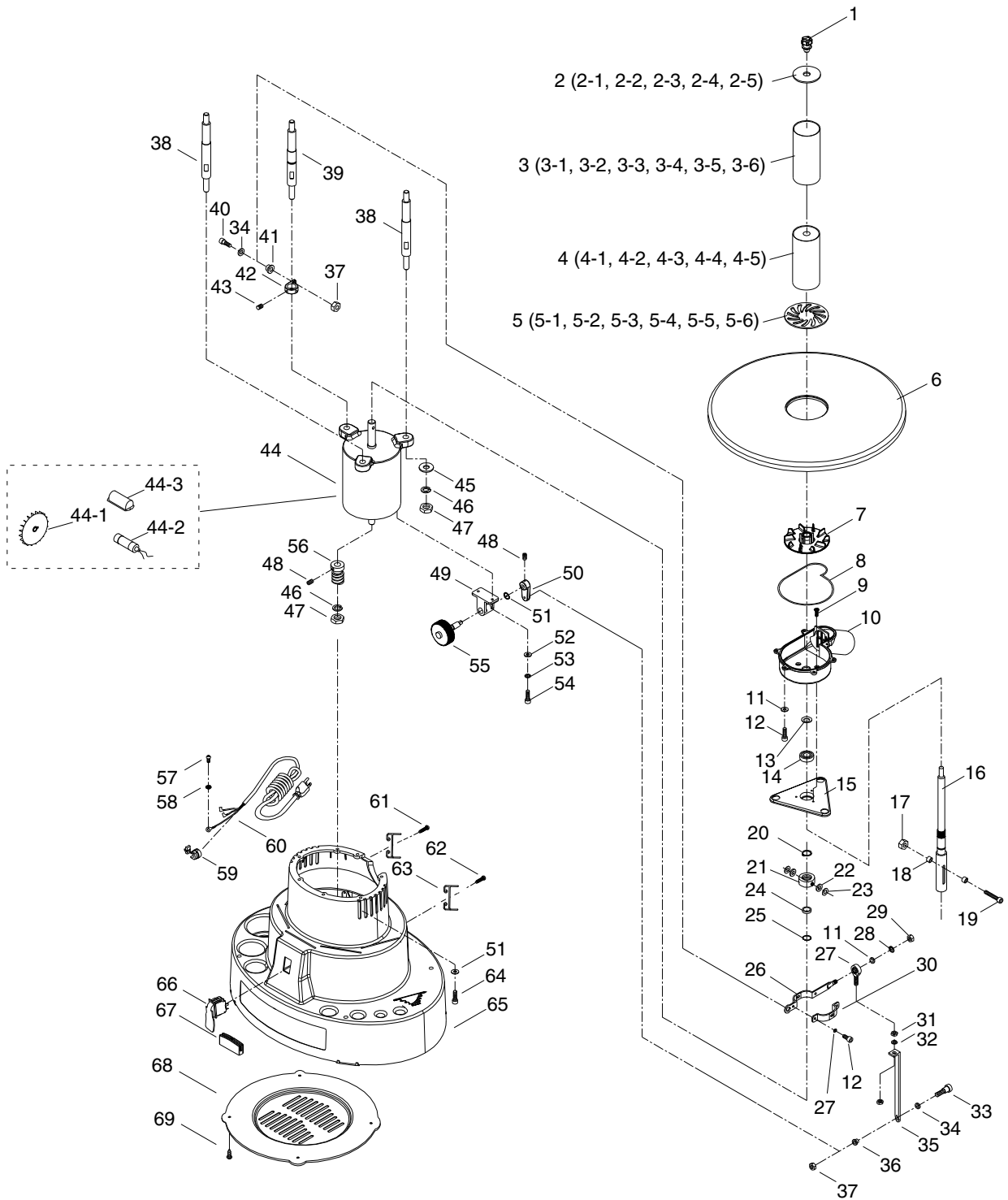


SECTION 9: PARTS

Main Breakdown



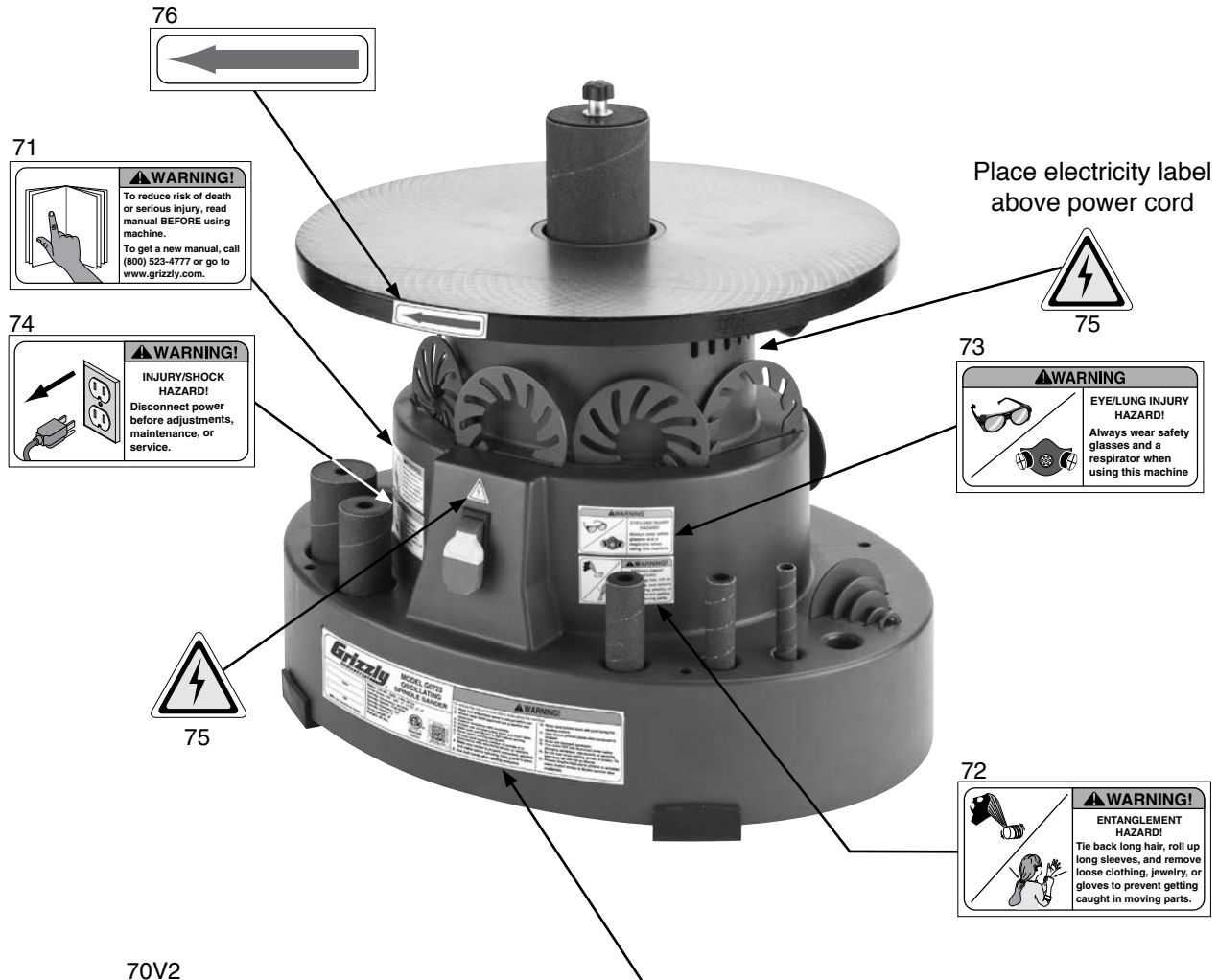
Main Parts List

REF	PART #	DESCRIPTION
1	P0723001	KNOB M8-1.25 LH
2	P0723002	DRUM WASHER SET OF 5
2-1	P0723002-1	DRUM WASHER 3/4"
2-2	P0723002-2	DRUM WASHER 1"
2-3	P0723002-3	DRUM WASHER 1-1/2"
2-4	P0723002-4	DRUM WASHER 2"
2-5	P0723002-5	DRUM WASHER 3"
3	P0723003	ABRASIVE SLEEVE SET OF 6
3-1	P0723003-1	ABRASIVE SLEEVE 1/2"
3-2	P0723003-2	ABRASIVE SLEEVE 3/4"
3-3	P0723003-3	ABRASIVE SLEEVE 1"
3-4	P0723003-4	ABRASIVE SLEEVE 1-1/2"
3-5	P0723003-5	ABRASIVE SLEEVE 2"
3-6	P0723003-6	ABRASIVE SLEEVE 3"
4	P0723004	RUBBER DRUM SET OF 5
4-1	P0723004-1	RUBBER DRUM 3/4"
4-2	P0723004-2	RUBBER DRUM 1"
4-3	P0723004-3	RUBBER DRUM 1-1/2"
4-4	P0723004-4	RUBBER DRUM 2"
4-5	P0723004-5	RUBBER DRUM 3"
5	P0723005	TABLE INSERT SET OF 6
5-1	P0723005-1	TABLE INSERT 1/2"
5-2	P0723005-2	TABLE INSERT 3/4"
5-3	P0723005-3	TABLE INSERT 1"
5-4	P0723005-4	TABLE INSERT 1-1/2"
5-5	P0723005-5	TABLE INSERT 2"
5-6	P0723005-6	TABLE INSERT 3"
6	P0723006	TABLE
7	P0723007	FAN
8	P0723008	GASKET 10 X 10 X 500
9	PFH83M	FLAT HD CAP SCR M5-.8 X 10
10	P0723010	FAN HOUSING
11	PW02M	FLAT WASHER 5MM
12	PCAP33M	CAP SCREW M5-.8 X 12
13	P0723013	SEAL 16 X 30 X 2.5
14	P6003ZZ	BALL BEARING 6003ZZ
15	P0723015	MOTOR PLATE
16	P0723016	SPINDLE
17	PN06M	HEX NUT M5-.8
18	P0723018	BUSHING
19	PCAP78M	CAP SCREW M5-.8 X 40
20	PR18M	EXT RETAINING RING 17MM
21	P0723021	COLLAR
22	P0723022	RING 7 X 16 X 2
23	P0723023	WAVY WASHER 8 X 14 X 0.4
24	P6903ZZ	BALL BEARING 6903ZZ
25	PR35M	INT RETAINING RING 30MM

REF	PART #	DESCRIPTION
26	P0723026	BRACKET
27	P0723027	ROD END BEARING M8-1.25-6G
28	PLW01M	LOCK WASHER 5MM
29	PN06M	HEX NUT M5-.8
30	P0723030	BRACKET
31	PN03M	HEX NUT M8-1.25
32	PLW04M	LOCK WASHER 8MM
33	P0723033	SHOULDER SCREW M8 X 10, M6-1 X 16
34	PW01M	FLAT WASHER 8MM
35	P0723035	LINK
36	P0723036	BUSHING
37	PN01M	HEX NUT M6-1
38	P0723038	MOTOR STANDOFF
39	P0723039	MOTOR STANDOFF W/GROOVE
40	P0723040	SHOULDER SCREW
41	P0723041	BUSHING 8MM
42	P0723042	PIVOT
43	PSS03M	SET SCREW M6-1 X 8
44	P0723044	MOTOR 1/4HP 120V
44-1	P0723044-1	MOTOR FAN
44-2	P0723044-2	R CAPACITOR 20M 250V 1-3/8 X 2-3/4
44-3	P0723044-3	CAPACITOR COVER
45	PW04M	FLAT WASHER 10MM
46	PLW06M	LOCK WASHER 10MM
47	PN02M	HEX NUT M10-1.5
48	PSS26M	SET SCREW M5-.8 X 6
49	P0723049	BLOCK
50	P0723050	CAM
51	PR05M	EXT RETAINING RING 15MM
52	PW03M	FLAT WASHER 6MM
53	PLW03M	LOCK WASHER 6MM
54	PCAP01M	CAP SCREW M6-1 X 16
55	P0723055	WORM GEAR W/SPINDLE
56	P0723056	WORM
57	PS09M	PHLP HD SCR M5-.8 X 10
58	PTLW02M	EXT TOOTH WASHER 5MM
59	P0723059	STRAIN RELIEF STRT SNAP-IN 6P-4
60	P0723060	POWER CORD 18G 3W 72" 5-15
61	P0723061	TAP SCREW M4.8 X 25
62	P0723062	TAP SCREW M4.8 X 32
63	P0723063	CORD WRAP BRACKET
64	PCAP26M	CAP SCREW M6-1 X 12
65	P0723065	BASE
66	G8988	PADDLE SWITCH 12A 125/250V
67	P0723067	FOOT
68	P0723068	BASE COVER
69	PHTEK43M	TAP SCREW M5 X 10



Labels Breakdown



70V2

	MODEL G0723 OSCILLATING SPINDLE SANDER	WARNING! To reduce the risk of serious injury while using this machine:	
		Motor: 1/4 HP, 120V, 1-PH, 60 Hz Drum Sizes: 1/2", 3/4", 1", 1-1/2", 2", 3" Spindle Oscillation: 30 SPM Spindle Speed: 1725 RPM Spindle Diameter: 1/2" Spindle Stroke: 1" Drum Length: 4" Weight: 46 lbs.	1. Read and understand owner's manual before use. 2. Always wear ANSI-approved eye protection and respirator. 3. Support workpiece with worktable. 4. Always use corresponding drum and insert sizes. 5. Make sure spindle nut is tight before starting. 6. Never touch moving sandpaper. 7. Always sand against rotation of spindle or in accordance with directional arrows on machine. 8. Make sure sander is properly assembled, adjusted, and stable before operating. Keep guards in place. 9. Use both hands when sanding workpiece.
Date _____ SN _____ Mfd. for Grizzly in China			

REF	PART #	DESCRIPTION
70V2	P0723070V2	MACHINE ID LABEL ETL V2.04.17
71	PLABEL-12D	READ MANUAL 2.8W X 1.5H
72	PLABEL-55C	ENTANGLEMENT HAZARD 2.8W X 1.5H
73	PLABEL-57C	GLASSES/RESPIRATOR 2.8W X 1.5H

REF	PART #	DESCRIPTION
74	PLABEL-62C	DISCONNECT 110V 2.8W X 1.5H
75	PLABEL-14A	ELECTRICITY 0.7W X 0.6H
76	P0723076	DIRECTION LABEL

! WARNING

Safety labels help reduce the risk of serious injury caused by machine hazards. If any label comes off or becomes unreadable, the owner of this machine **MUST** replace it in the original location before resuming operations. For replacements, contact (800) 523-4777 or www.grizzly.com.

