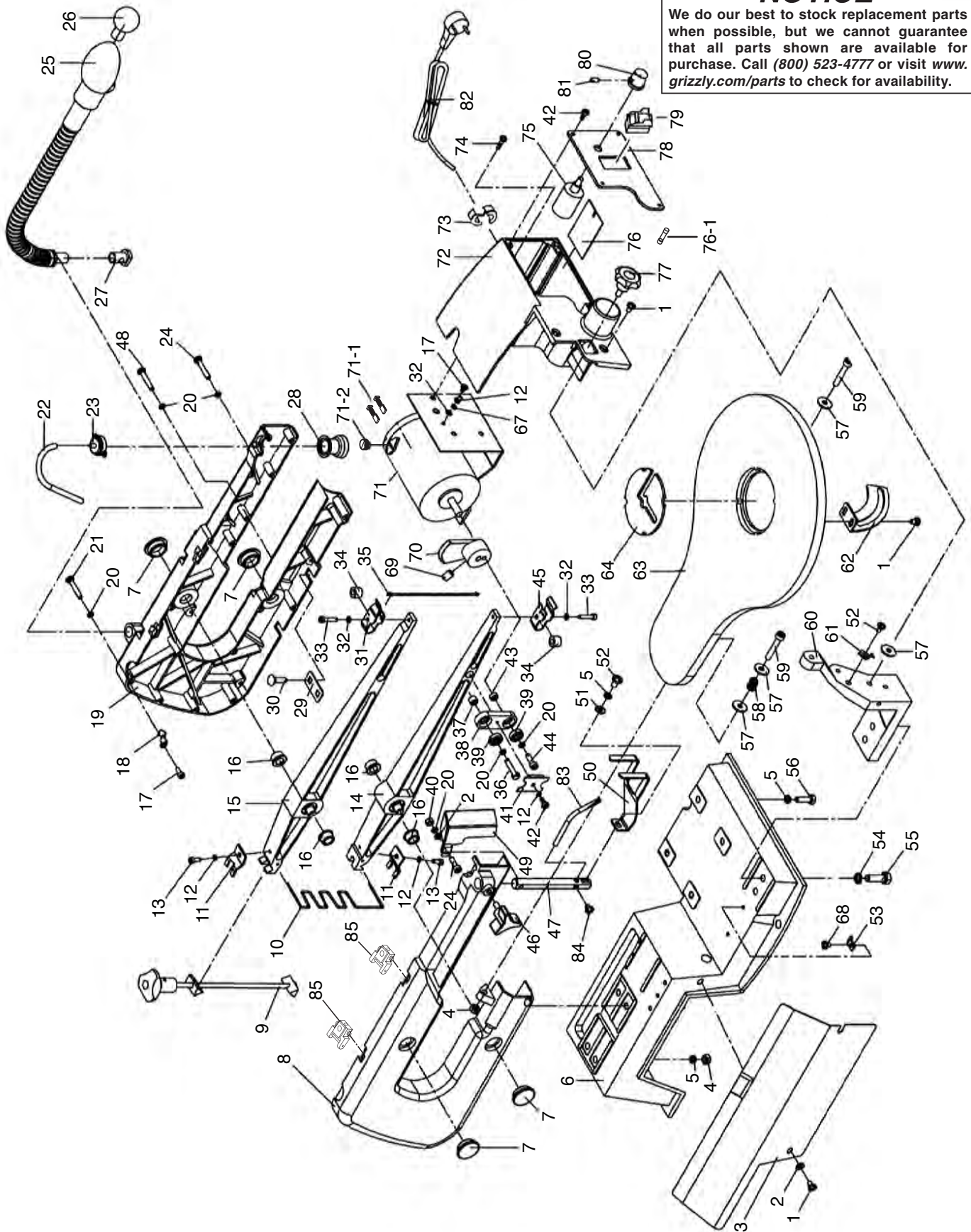


G0734 Main Breakdown

NOTICE

We do our best to stock replacement parts when possible, but we cannot guarantee that all parts shown are available for purchase. Call (800) 523-4777 or visit www.grizzly.com/parts to check for availability.



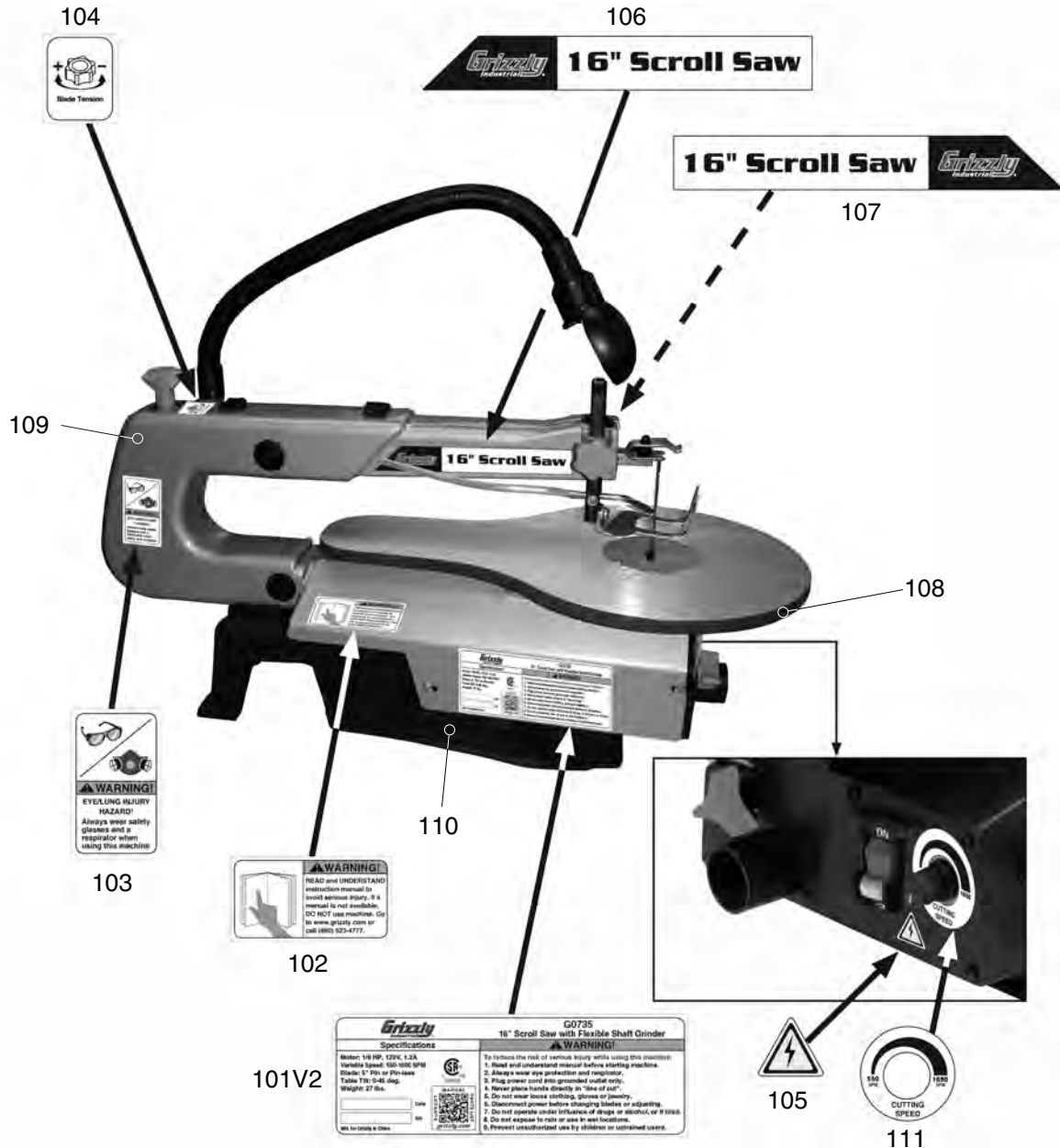
G0734 Main Parts List

| REF | PART # | DESCRIPTION |
|-----|----------|---------------------------|
| 1 | P0734001 | PHLP HD SCR M5-.8 X 8 |
| 2 | P0734002 | FLAT WASHER 5MM |
| 3 | P0734003 | SIDE COVER |
| 4 | P0734004 | HEX NUT M6-1 |
| 5 | P0734005 | LOCK WASHER 6MM |
| 6 | P0734006 | BASE |
| 7 | P0734007 | DUST CAP |
| 8 | P0734008 | LEFT ARM HOUSING |
| 9 | P0734009 | TENSION BOLT ASSY |
| 10 | P0734010 | ARM SPRING |
| 11 | P0734011 | PRESSURE PLATE |
| 12 | P0734012 | LOCK WASHER 4MM |
| 13 | P0734013 | PHLP HD SCR M4-.7 X 10 |
| 14 | P0734014 | LOWER ARM |
| 15 | P0734015 | UPPER ARM |
| 16 | P0734016 | OIL SLEEVE BEARING |
| 17 | P0734017 | PHLP HD SCR M4-.7 X 6 |
| 18 | P0734018 | WIRE CLIP |
| 19 | P0734019 | RIGHT ARM HOUSING |
| 20 | P0734020 | LOCK WASHER 5MM |
| 21 | P0734021 | PHLP HD SCR M5-.8 X 35 |
| 22 | P0734022 | AIR HOSE 6 X 165MM CLEAR |
| 23 | P0734023 | BELLOWS CAP |
| 24 | P0734024 | PHLP HD SCR M5-.8 X 25 |
| 25 | P0734025 | LAMP 120V 10W |
| 26 | P0734026 | BULB 120V 10W BA15S INC |
| 27 | P0734027 | LAMP MOUNTING POST |
| 28 | P0734028 | BELLOWS |
| 29 | P0734029 | MOUNTING PLATE |
| 30 | P0734030 | CARRIAGE BOLT M6-1 X 20 |
| 31 | P0734031 | UPPER BLADE SUPPORT |
| 32 | P0734032 | EXT TOOTH WASHER 4MM |
| 33 | P0734033 | CAP SCREW M4-.7 X 20 |
| 34 | P0734034 | SUPPORT SPACER |
| 35 | P0734035 | BLADE |
| 36 | P0734036 | CAP SCREW M5-.8 X 25 |
| 37 | P0734037 | BIG SPACER |
| 38 | P0734038 | ECCENTRIC CONNECTOR |
| 39 | P0734039 | BALL BEARING 625ZZ |
| 40 | P0734040 | HEX NUT M5-.8 |
| 41 | P0734041 | ECCENTRIC CONNECTOR PLATE |
| 42 | P0734042 | TAP SCREW M4 X 10 |
| 43 | P0734043 | SMALL SPACER |

| REF | PART # | DESCRIPTION |
|------|------------|-------------------------------|
| 44 | P0734044 | CAP SCREW M5-.8 X 16 |
| 45 | P0734045 | LOWER BLADE SUPPORT |
| 46 | P0734046 | STAR KNOB M6-1 X 12 6PT |
| 47 | P0734047 | DROP FOOT GUIDE POST |
| 48 | P0734048 | PHLP HD SCR M5-.8 X 30 |
| 49 | P0734049 | BLADE GUARD |
| 50 | P0734050 | DROP FOOT |
| 51 | P0734051 | FLAT WASHER 6MM |
| 52 | P0734052 | PHLP HD SCR M6-1 X 10 |
| 53 | P0734053 | CORD CLAMP PLATE |
| 54 | P0734054 | LOCK WASHER 8MM |
| 55 | P0734055 | CAP SCREW M8-1.25 X 25 |
| 56 | P0734056 | HEX BOLT M6-1 X 20 |
| 57 | P0734057 | D-SHAPED FLAT WASHER 6MM |
| 58 | P0734058 | COMPRESSION SPRING |
| 59 | P0734059 | CAP SCREW M6-1 X 35 |
| 60 | P0734060 | TABLE MOUNTING BRACKET |
| 61 | P0734061 | POINTER |
| 62 | P0734062 | SCALE |
| 63 | P0734063 | TABLE |
| 64 | P0734064 | TABLE INSERT |
| 67 | P0734067 | FLAT WASHER 4MM |
| 68 | P0734068 | PHLP HD SCR M4-.7 X 8 |
| 69 | P0734069 | SET SCREW M8-1.25 X 12 |
| 70 | P0734070 | ECCENTRIC COUNTERWEIGHT |
| 71 | P0734071 | MOTOR DC 90W |
| 71-1 | P0734071-1 | MOTOR CARBON BRUSHES 2-PC |
| 71-2 | P0734071-2 | MOTOR BRUSH CAP |
| 72 | P0734072 | FRONT HOUSING |
| 73 | P0734073 | STRAIN RELIEF 8MM SNAP-IN |
| 74 | P0734074 | PHLP HD SCR M4-.7 X 10 |
| 75 | P0734075 | POTENTIOMETER C104 |
| 76 | P0734076 | CIRCUIT BOARD |
| 76-1 | P0734076-1 | FUSE F5A250V GLASS |
| 77 | P0734077 | STAR KNOB M6-1 X 14 3PT |
| 78 | P0734078 | SWITCH COVER |
| 79 | P0734079 | TOGGLE SAFETY SWITCH |
| 80 | P0734080 | VARIABLE SPEED KNOB |
| 81 | P0734081 | CAP SCREW M5-.8 X 6 |
| 82 | P0734082 | POWER CORD 18/3-AWG SJT 5-15 |
| 83 | P0734083 | AIR NOZZLE |
| 84 | P0734084 | PHLP HD SCR M5-.8 X 6 |
| 85 | P0734085 | PLAIN-END BLADE ADAPTER 2 PC. |



Label Placement



| REF | PART # | DESCRIPTION |
|-------|------------|-----------------------------------|
| 101V2 | P0734101V2 | MACHINE ID LABEL V2.03.16 (G0734) |
| 101V2 | P0734101V2 | MACHINE ID LABEL V2.03.16 (G0735) |
| 102 | P0734102 | READ MANUAL LABEL |
| 103 | P0734103 | GLASSES RESPIRATOR LABEL |
| 104 | P0734104 | TENSION KNOB ADJ LABEL |
| 105 | P0734105 | ELECTRICITY LABEL |

| REF | PART # | DESCRIPTION |
|-----|----------|------------------------------|
| 106 | P0734106 | LEFT DECORATIVE LABEL |
| 107 | P0734107 | RIGHT DECORATIVE LABEL |
| 108 | P0734108 | GRIZZLY GREEN TOUCH-UP PAINT |
| 109 | P0734109 | GRAY TOUCH-UP PAINT |
| 110 | P0734110 | BLACK TOUCH-UP PAINT |
| 111 | P0734111 | VARIABLE SPEED LABEL |

WARNING

Safety labels help reduce the risk of serious injury caused by machine hazards. If any label comes off or becomes unreadable, the owner of this machine **MUST** replace it in the original location before resuming operations. For replacements, contact (800) 523-4777 or www.grizzly.com.

