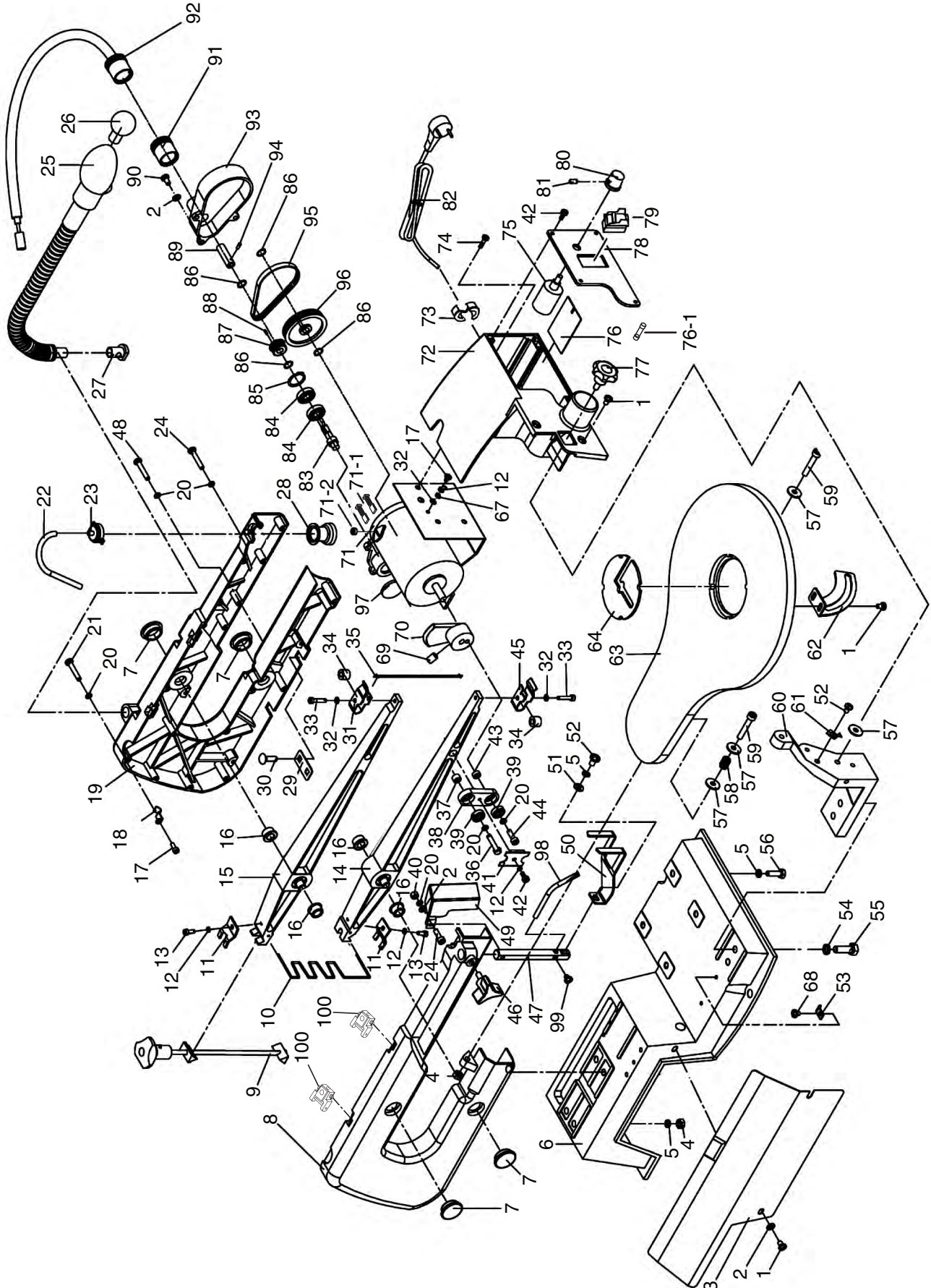


# G0735 Main Breakdown



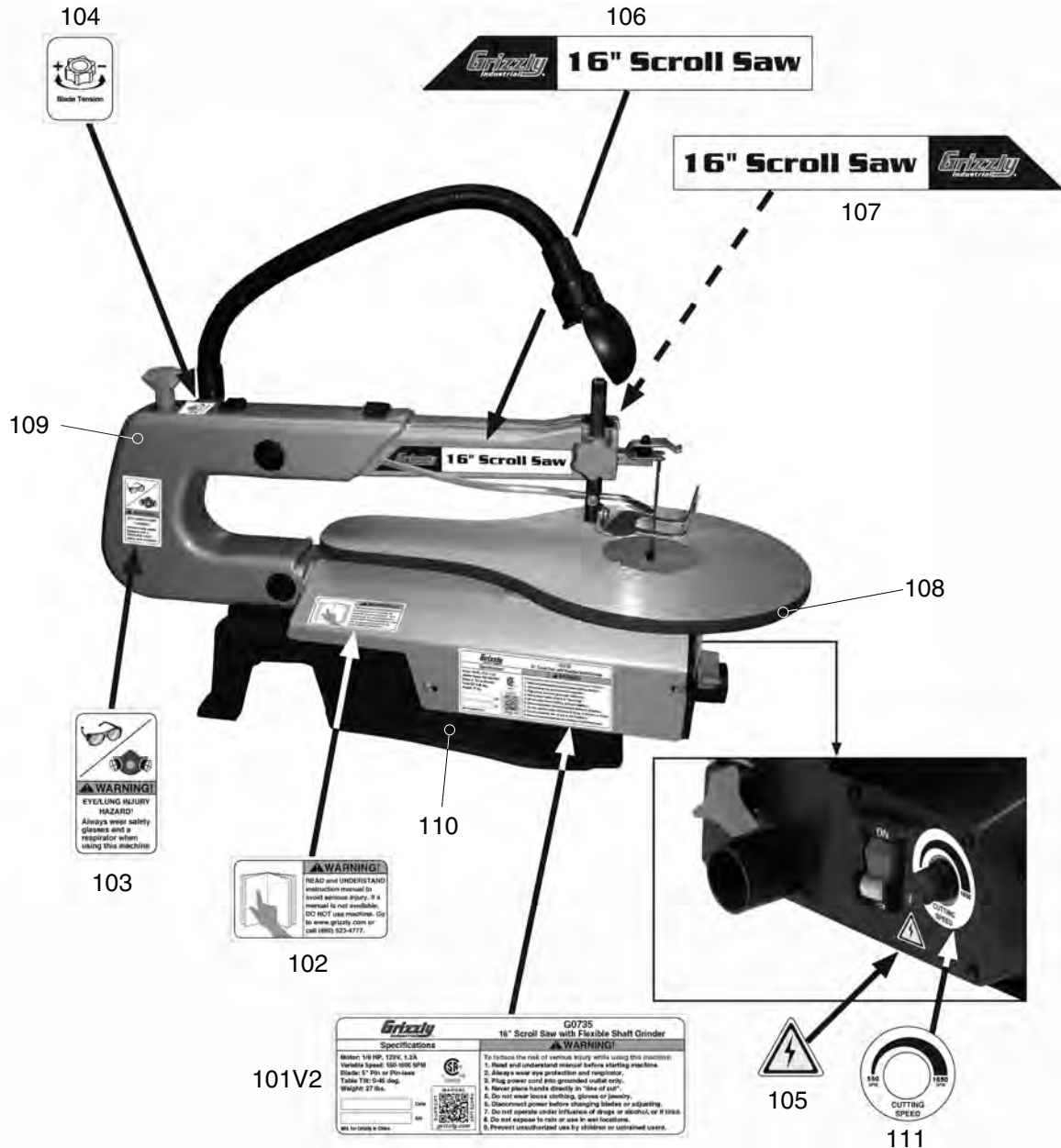
# G0735 Main Parts List

REF	PART #	DESCRIPTION
1	P0735001	PHLP HD SCR M5-.8 X 8
2	P0735002	FLAT WASHER 5MM
3	P0735003	SIDE COVER
4	P0735004	HEX NUT M6-1
5	P0735005	LOCK WASHER 6MM
6	P0735006	BASE
7	P0735007	DUST CAP
8	P0735008	LEFT ARM HOUSING
9	P0735009	TENSION BOLT ASSY
10	P0735010	ARM SPRING
11	P0735011	PRESSURE PLATE
12	P0735012	LOCK WASHER 4MM
13	P0735013	PHLP HD SCR M4-.7 X 10
14	P0735014	LOWER ARM
15	P0735015	UPPER ARM
16	P0735016	OIL SLEEVE BEARING
17	P0735017	PHLP HD SCR M4-.7 X 6
18	P0735018	WIRE CLIP
19	P0735019	RIGHT ARM HOUSING
20	P0735020	LOCK WASHER 5MM
21	P0735021	PHLP HD SCR M5-.8 X 35
22	P0735022	AIR HOSE 6 X 165MM CLEAR
23	P0735023	BELLOWS CAP
24	P0735024	PHLP HD SCR M5-.8 X 25
25	P0735025	LAMP 120V 10W
26	P0735026	BULB 120V 10W BA15S INC
27	P0735027	LAMP MOUNTING POST
28	P0735028	BELLOWS
29	P0735029	MOUNTING PLATE
30	P0735030	CARRIAGE BOLT M6-1 X 20
31	P0735031	UPPER BLADE SUPPORT
32	P0735032	EXT TOOTH WASHER 4MM
33	P0735033	CAP SCREW M4-.7 X 20
34	P0735034	SUPPORT SPACER
35	P0735035	BLADE
36	P0735036	CAP SCREW M5-.8 X 25
37	P0735037	BIG SPACER
38	P0735038	ECCENTRIC CONNECTOR
39	P0735039	BALL BEARING 625ZZ
40	P0735040	HEX NUT M5-.8
41	P0735041	ECCENTRIC CONNECTOR PLATE
42	P0735042	TAP SCREW M4 X 10
43	P0735043	SMALL SPACER
44	P0735044	CAP SCREW M5-.8 X 16
45	P0735045	LOWER BLADE SUPPORT
46	P0735046	STAR KNOB M6-1 X 12 6PT
47	P0735047	DROP FOOT GUIDE POST
48	P0735048	PHLP HD SCR M5-.8 X 30
49	P0735049	BLADE GUARD
50	P0735050	DROP FOOT
51	P0735051	FLAT WASHER 6MM

REF	PART #	DESCRIPTION
52	P0735052	PHLP HD SCR M6-1 X 10
53	P0735053	CORD CLAMP PLATE
54	P0735054	LOCK WASHER 8MM
55	P0735055	CAP SCREW M8-1.25 X 25
56	P0735056	HEX BOLT M6-1 X 20
57	P0735057	D-SHAPED FLAT WASHER 6MM
58	P0735058	COMPRESSION SPRING
59	P0735059	CAP SCREW M6-1 X 35
60	P0735060	TABLE MOUNTING BRACKET
61	P0735061	POINTER
62	P0735062	SCALE
63	P0735063	TABLE
64	P0735064	TABLE INSERT
67	P0735067	FLAT WASHER 4MM
68	P0735068	PHLP HD SCR M4-.7 X 8
69	P0735069	SET SCREW M8-1.25 X 12
70	P0735070	ECCENTRIC COUNTERWEIGHT
71	P0735071	MOTOR DC W/ROTARY DRIVE
71-1	P0735071-1	MOTOR CARBON BRUSHES 2-PC
71-2	P0735071-2	MOTOR BRUSH CAP
72	P0735072	FRONT HOUSING
73	P0735073	STRAIN RELIEF 8MM SNAP-IN
74	P0735074	PHLP HD SCR M4-.7 X 10
75	P0735075	POTENTIOMETER C104
76	P0735076	CIRCUIT BOARD
76-1	P0735076-1	FUSE F5A250V GLASS
77	P0735077	STAR KNOB M6-1 X 14 3PT
78	P0735078	SWITCH COVER
79	P0735079	TOGGLE SAFETY SWITCH
80	P0735080	VARIABLE SPEED KNOB
81	P0735081	CAP SCREW M5-.8 X 6
82	P0735082	POWER CORD 18/3-AWG SJT 5-15
83	P0735083	SHAFT
84	P0735084	BALL BEARING 608Z
85	P0735085	EXT RETAINING RING 22MM
86	P0735086	E-CLIP 8MM
87	P0735087	SMALL PULLEY
88	P0735088	SOLID PIN 3 X 8
89	P0735089	COUPLING
90	P0735090	PHLP HD SCR M5-.8 X 12
91	P0735091	SHAFT GUARD
92	P0735092	FLEXIBLE SHAFT
93	P0735093	PULLEY COVER
94	P0735094	ROLL PIN 3 X 8
95	P0735095	TIMING BELT 74XXL 4.3MM
96	P0735096	LARGE PULLEY
97	P0735097	DUST COVER
98	P0735098	AIR NOZZLE
99	P0735099	PHLP HD SCR M5-.8 X 6
100	P0735100	PLAIN-END BLADE ADAPTER 2PC



# Label Placement



REF	PART #	DESCRIPTION
101V2	P0734101V2	MACHINE ID LABEL V2.03.16 (G0734)
101V2	P0734101V2	MACHINE ID LABEL V2.03.16 (G0735)
102	P0734102	READ MANUAL LABEL
103	P0734103	GLASSES RESPIRATOR LABEL
104	P0734104	TENSION KNOB ADJ LABEL
105	P0734105	ELECTRICITY LABEL

REF	PART #	DESCRIPTION
106	P0734106	LEFT DECORATIVE LABEL
107	P0734107	RIGHT DECORATIVE LABEL
108	P0734108	GRIZZLY GREEN TOUCH-UP PAINT
109	P0734109	GRAY TOUCH-UP PAINT
110	P0734110	BLACK TOUCH-UP PAINT
111	P0734111	VARIABLE SPEED LABEL

## WARNING

Safety labels help reduce the risk of serious injury caused by machine hazards. If any label comes off or becomes unreadable, the owner of this machine **MUST** replace it in the original location before resuming operations. For replacements, contact (800) 523-4777 or [www.grizzly.com](http://www.grizzly.com).

