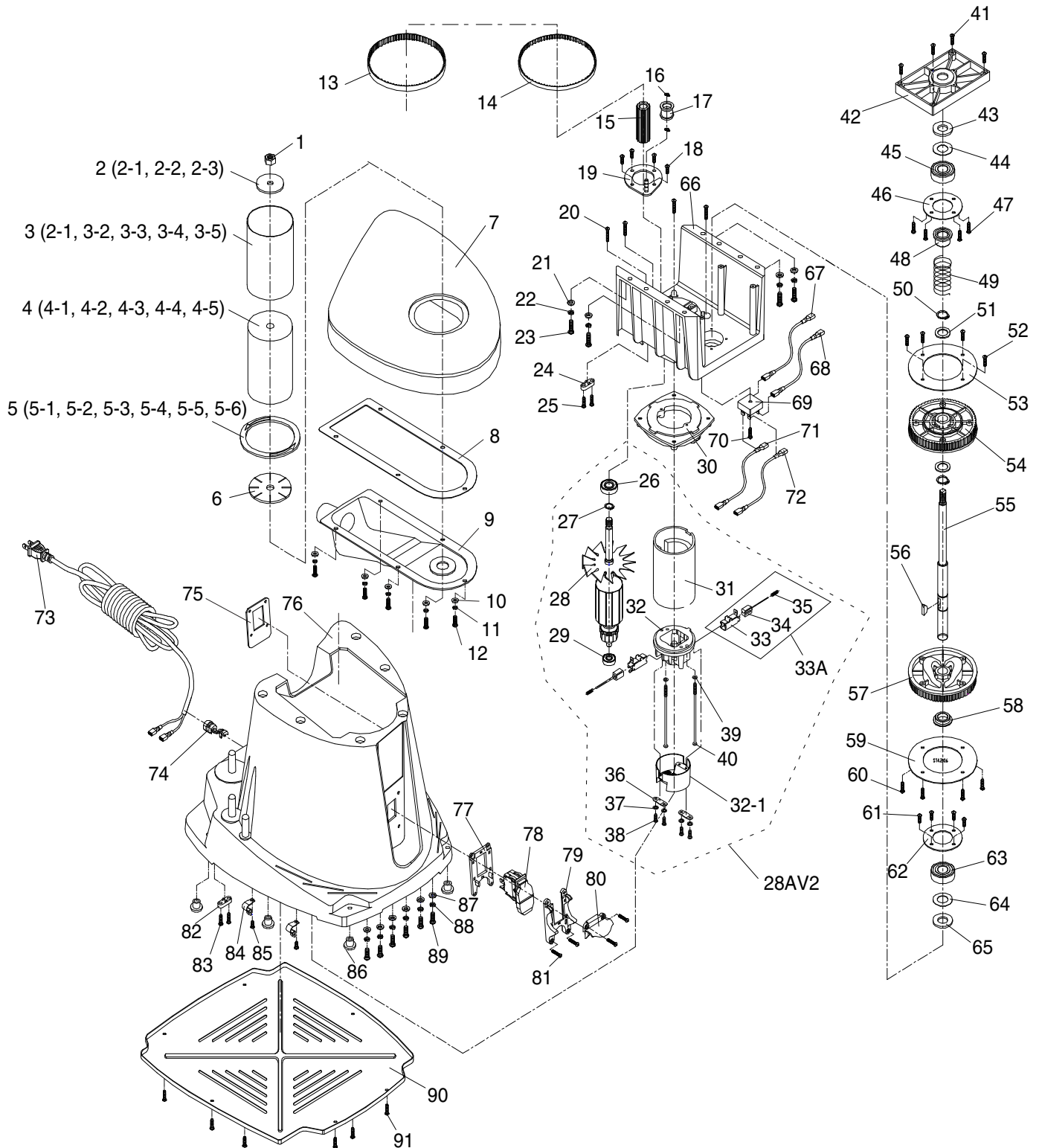


SECTION 9: PARTS

We do our best to stock replacement parts when possible, but we cannot guarantee that all parts shown are available for purchase. Call (800) 523-4777 or visit www.grizzly.com/parts to check for availability.

Main Breakdown



Main Parts List

REF	PART #	DESCRIPTION	REF	PART #	DESCRIPTION
1	P0739001	SPINDLE HEX NUT M10-1.5	35	P0739035	BRUSH SPRING
2	P0739002	SPINDLE WASHER SET OF 3	36	P0739036	CORD CLAMP
2-1	P0739002-1	SPINDLE WASHER 5/8" OD	37	P0739037	INT TOOTH WASHER 4MM
2-2	P0739002-2	SPINDLE WASHER 7/8" OD	38	P0739038	TAP SCREW M4 X 14
2-3	P0739002-3	SPINDLE WASHER 1-3/4" OD	39	P0739039	FLAT WASHER 4MM
3	P0739003	SANDING SLEEVE SET OF 6	40	P0739040	TAP SCREW M4 X110
3-1	P0739003-1	SANDING SLEEVE 1/2"	41	P0739041	TAP SCREW M4 X 20
3-2	P0739003-2	SANDING SLEEVE 3/4"	42	P0739042	BEARING COVER
3-3	P0739003-3	SANDING SLEEVE 1"	43	P0739043	FELT WASHER
3-4	P0739003-4	SANDING SLEEVE 1-1/2"	44	P0739044	RUBBER WASHER
3-5	P0739003-5	SANDING SLEEVE 2"	45	P0739045	BALL BEARING 6203ZZ
3-6	P0739003-6	SANDING SLEEVE 3"	46	P0739046	UPPER BEARING SUPPORT
4	P0739004	SANDING DRUM SET OF 5	47	P0739047	TAP SCREW M4 X 16
4-1	P0739004-1	SANDING DRUM 3/4"	48	P0739048	BEARING SLEEVE
4-2	P0739004-2	SANDING DRUM 1"	49	P0739049	COMPRESSION SPRING
4-3	P0739004-3	SANDING DRUM 1-1/2"	50	P0739050	EXT RETAINING RING 17MM
4-4	P0739004-4	SANDING DRUM 2"	51	P0739051	SPINDLE WASHER
4-5	P0739004-5	SANDING DRUM 3"	52	P0739052	TAP SCREW M4 X 14
5	P0739005	TABLE INSERT SET OF 6	53	P0739053	DRIVE GEAR PLATE
5-1	P0739005-1	TABLE INSERT 1/2" ID	54	P0739054	DRIVE GEAR
5-2	P0739005-2	TABLE INSERT 3/4" ID	55	P0739055	SPINDLE
5-3	P0739005-3	TABLE INSERT 1" ID	56	P0739056	WOODRUFF KEY
5-4	P0739005-4	TABLE INSERT 1-1/2" ID	57	P0739057	DIFFERENTIAL GEAR
5-5	P0739005-5	TABLE INSERT 2" ID	58	P0739058	BEARING SLEEVE
5-6	P0739005-6	TABLE INSERT 3" ID	59	P0739059	DIFFERENTIAL GEAR PLATE
6	P0739006	BASE WASHER 2-3/4" OD	60	P0739060	TAP SCREW M4 X 14
7	P0739007	CAST IRON TABLE	61	P0739061	TAP SCREW M4 X 14
8	P0739008	GASKET	62	P0739062	LOWER BEARING SUPPORT
9	P0739009	DUST COVER	63	P0739063	BALL BEARING 6203ZZ
10	P0739010	FLAT WASHER 5MM	64	P0739064	RUBBER WASHER
11	P0739011	LOCK WASHER 5MM	65	P0739065	FELT WASHER
12	P0739012	PHLP HD SCR M5-.8 X 12	66	P0739066	GEAR SUPPORT
13	P0739013	TIMING BELT 3/8" X 160XL	67	P0739067	WIRE ASSEMBLY 18G 1W 9"
14	P0739014	TIMING BELT 1/4" X 160XL	68	P0739068	WIRE ASSEMBLY 18G 1W 9"
15	P0739015	DRIVE PULLEY	69	P0739069	RECTIFIER
16	P0739016	TENSION ROLLER WASHER	70	P0739070	TAP SCREW M4 X 20
17	P0739017	TENSION ROLLER ASSEMBLY	71	P0739071	WIRE ASSEMBLY 18G 1W 6"
18	P0739018	TAP SCREW M4 X 14	72	P0739072	WIRE ASSEMBLY 18G 1W 6"
19	P0739019	ORIENTATION PLATE ASSEMBLY	73	P0739073	POWER CORD 18G 2W 6" 1-15
20	P0739020	TAP SCREW M4 X 20	74	P0739074	STRAIN RELIEF 6N-4
21	P0739021	FLAT WASHER 6MM	75	P0739075	REAR SWITCH PLATE
22	P0739022	LOCK WASHER 6MM	76	P0739076	HOUSING BASE
23	P0739023	PHLP HD SCR M6-1 X 16	77	P0739077	FRONT SWITCH PLATE
24	P0739024	CORD CLAMP	78	P0739078	SAFETY PADDLE SWITCH
25	P0739025	TAP SCREW M4 X 16	79	P0739079	SWITCH BRACKET
26	P0739026	BALL BEARING 6001ZZ	80	P0739080	SWITCH BRACKET COVER
27	P0739027	EXT RETAINING RING 13MM	81	P0739081	PHLP HD SCR M4-.7 X 16
28AV2	P0739028AV2	MOTOR ASSEMBLY V2.06.15	82	P0739082	POWER CORD HOLDER
28	P0739028	ARMATURE ASSEMBLY	83	P0739083	TAP SCREW M4 X 16
29	P0739029	BALL BEARING 608ZZ	84	P0739084	CABLE HOLDER 18G
30	P0739030	CONNECTION PLATE	85	P0739085	TAP SCREW M4 X 10
31	P0739031	FIELD ASSEMBLY	86	P0739086	RUBBER FOOT
32	P0739032	REAR COVER	87	P0739087	FLAT WASHER 6MM
32-1	P0739032-1	VENTED MOTOR COVER	88	P0739088	LOCK WASHER 6MM
33A	P0739033A	MOTOR BRUSH ASSEMBLY 1 PAIR	89	P0739089	PHLP HD SCR M6-1 X 16
33	P0739033	BRUSH HOLDER	90	P0739090	BOTTOM PLATE
34	P0739034	CARBON BRUSH	91	P0739091	TAP SCREW M4 X 14



Labels Breakdown



REF	PART #	DESCRIPTION
92	P0739092	WARNING LABEL
93	P0739093	ID LABEL

REF	PART #	DESCRIPTION
94	P0739094	MACHINE HAZARDS LABEL
99	P0739099	ELECTRICITY LABEL

!WARNING

Safety labels help reduce the risk of serious injury caused by machine hazards. If any label comes off or becomes unreadable, the owner of this machine **MUST** replace it in the original location before resuming operations. For replacements, contact (800) 523-4777 or www.grizzly.com.

