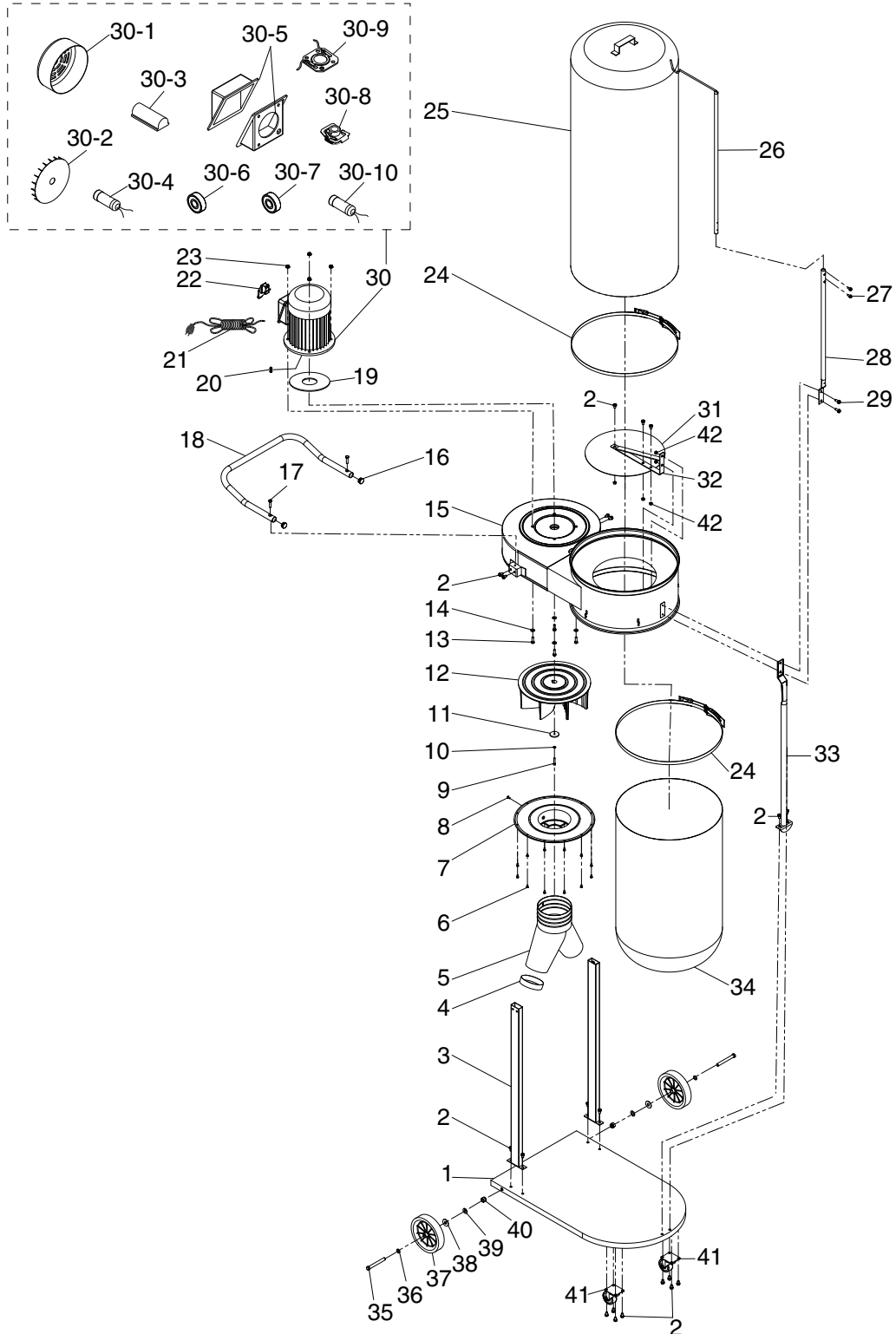


# SECTION 9: PARTS

## Main



**Please Note:** We do our best to stock replacement parts whenever possible, but we cannot guarantee that all parts shown here are available for purchase. Call (800) 523-4777 or visit our online parts store at [www.grizzly.com](http://www.grizzly.com) to check for availability.



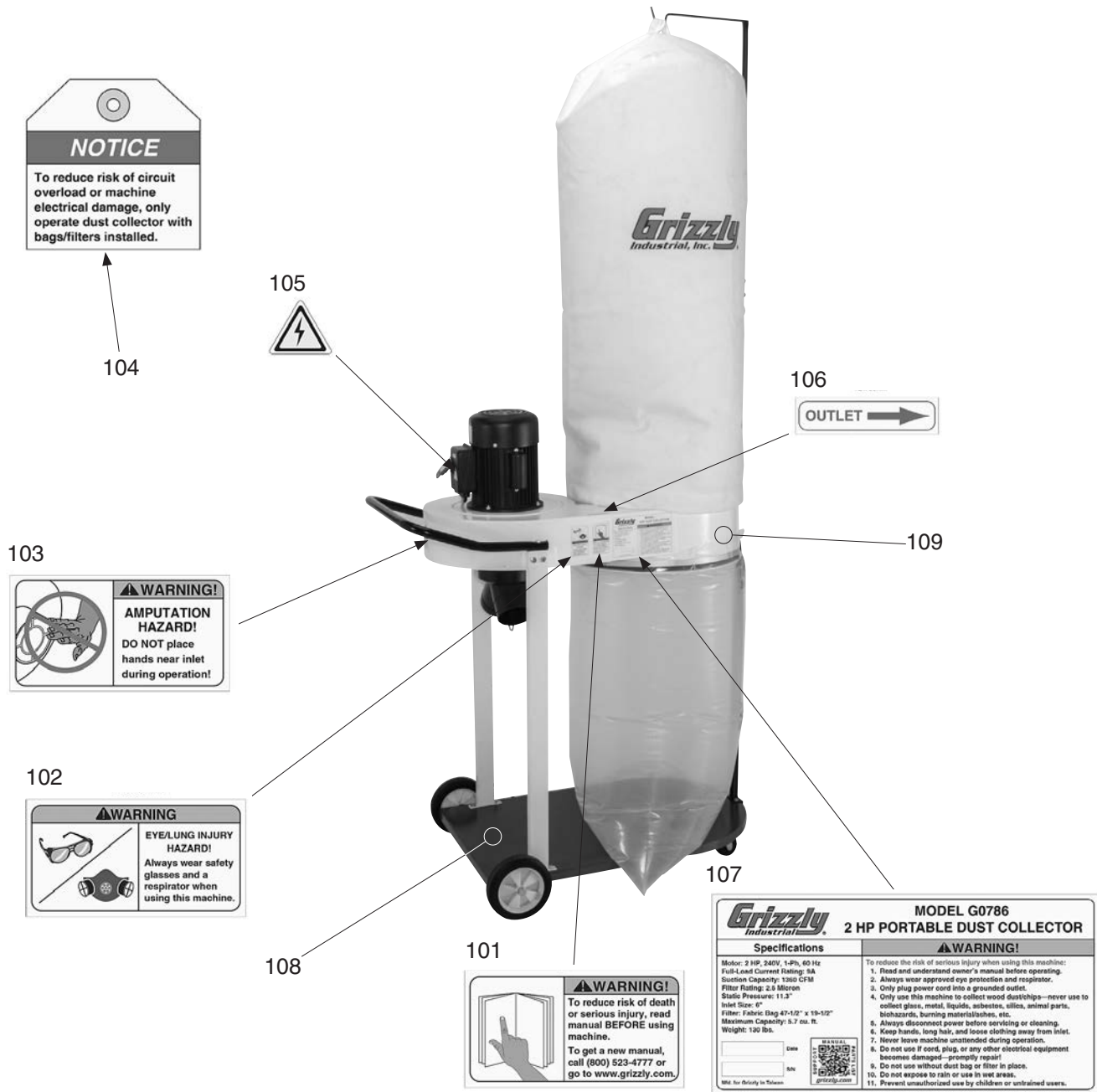
# Main Parts List

REF	PART #	DESCRIPTION
1	P0786001	BASE
2	P0786002	FLANGE BOLT 5/16-18 X 1/2
3	P0786003	SUPPORT LEG
4	P0786004	INLET CAP 4"
5	P0786005	Y-INLET 6" X 4" X 4"
6	P0786006	PHLP HD SCR 10-24 X 3/8
7	P0786007	INLET COVER 6"
8	P0786008	FLANGE BOLT 10-24 X 3/8
9	P0786009	CAP SCR M6-1 X 30 LH
10	P0786010	LOCK WASHER 6MM
11	P0786011	IMPELLER WASHER 6MM
12	P0786012	IMPELLER 12-3/4" ALUMINUM
13	P0786013	HEX BOLT 5/16-18 X 1
14	P0786014	FLAT WASHER 5/16
15	P0786015	IMPELLER HOUSING
16	P0786016	TUBE CAP 1"
17	P0786017	FLAT HD SCR 5/16-18 X 1-1/4
18	P0786018	HANDLE
19	P0786019	MOTOR GASKET
20	P0786020	KEY 7 X 7 X 29
21	P0786021	POWER CORD 14G 3W 72" 6-15P
22	P0786022	SAFETY PADDLE SWITCH
23	P0786023	FLANGE NUT 5/16-18
24	P0786024	BAG CLAMP
25	P0786025	UPPER FILTER BAG
26	P0786026	UPPER FILTER BAG SUPPORT
27	P0786027	FLANGE BOLT 1/4-20 X 1/2
28	P0786028	LOWER FILTER BAG SUPPORT
29	P0786029	FLANGE BOLT 5/16-18 X 3/4
30	P0786030	MOTOR 2HP 240V 1-PH
30-1	P0786030-1	MOTOR FAN COVER

REF	PART #	DESCRIPTION
30-2	P0786030-2	MOTOR FAN
30-3	P0786030-3	CAPACITOR COVER
30-4	P0786030-4	S CAPACITOR 300M 125V 1-3/8 X 2-3/4
30-5	P0786030-5	MOTOR WIRING JUNCTION BOX
30-6	P0786030-6	BALL BEARING 6205ZZ
30-7	P0786030-7	BALL BEARING 6203ZZ
30-8	P0786030-8	CENTRIFUGAL SWITCH 3450
30-9	P0786030-9	CONTACT PLATE
30-10	P0786030-10	R CAPACITOR 30M 250V 1-3/8 X 2-1/2
31	P0786031	SEPARATOR
32	P0786032	SEPARATOR HANGER
33	P0786033	COLLECTOR SUPPORT
34	P0786034	LOWER COLLECTION BAG, PLASTIC
35	P0786035	HEX BOLT 1/2-12 X 4
36	P0786036	FLAT WASHER 1/2
37	P0786037	WHEEL 7"
38	P0786038	FENDER WASHER 1/2
39	P0786039	FENDER WASHER 1/2, PLASTIC
40	P0786040	LOCK NUT 1/2-12
41	P0786041	CASTER 2-1/2"
42	P0786042	HEX NUT 5/16-18
101	P0786101	READ MANUAL LABEL
102	P0786102	GLASSES/RESPIRATOR LABEL
103	P0786103	HANDS/DUST COLLECTOR OUTLET LABEL
104	P0786104	FILTER NOTICE LABEL
105	P0786105	ELECTRICITY LABEL
106	P0786106	OUTLET LABEL
107	P0786107	MACHINE ID LABEL
108	P0786108	GRIZZLY GREEN TOUCH-UP PAINT
109	P0786109	GRIZZLY PUTTY TOUCH-UP PAINT



# Labels & Cosmetics



**NOTICE**  
To reduce risk of circuit overload or machine electrical damage, only operate dust collector with bags/filters installed.



**106**  
OUTLET →

**103**  
**WARNING!**  
**AMPUTATION HAZARD!**  
DO NOT place hands near inlet during operation!

**102**  
**WARNING**  
**EYE/LUNG INJURY HAZARD!**  
Always wear safety glasses and a respirator when using this machine.

**Grizzly Industrial, Inc.** **MODEL G0786**  
**2 HP PORTABLE DUST COLLECTOR**

Specifications	WARNING!
Motor: 2 HP, 240V, 1-Ph, 60 Hz Full-Load Current Rating: 9A Suction Capacity: 1200 CFM Filter Rating: 2.5 Micron Static Pressure: 11.3" Inlet Size: 4" Filter: Fabric Bag 47-1/2" x 18-1/2" Maximum Capacity: 3.7 cu. ft. Weight: 190 lbs.	To reduce the risk of serious injury when using this machine: 1. Read and understand owner's manual before operating. 2. Always wear approved eye protection and respirator. 3. Only plug power cord into a grounded outlet. 4. Only use this machine to collect wood dustchips—never use to collect glass, metal, liquids, solvents, oil, animal parts, biohazards, burning material/ashes, etc. 5. Always disconnect power before servicing or cleaning. 6. Keep hands, long hair, and loose clothing away from inlet. 7. Never leave machine unattended during operation. 8. Do not use if cord, plug, or any other electrical equipment becomes damaged—promptly repair! 9. Do not use without dust bag or filter in place. 10. Do not expose to rain or use in wet areas. 11. Prevent unauthorized use by children or untrained users.

**101**  
**WARNING!**  
To reduce risk of death or serious injury, read manual BEFORE using machine.  
To get a new manual, call (800) 523-4777 or go to [www.grizzly.com](http://www.grizzly.com).

REF	PART #	DESCRIPTION
101	P0786101	READ MANUAL LABEL
102	P0786102	GLASSES/RESPIRATOR LABEL
103	P0786103	HANDS/DUST COLLECTOR OUTLET LABEL
104	P0786104	FILTER NOTICE LABEL
105	P0786105	ELECTRICITY LABEL

REF	PART #	DESCRIPTION
106	P0786106	OUTLET LABEL
107	P0786107	MACHINE ID LABEL
108	P0786108	GRIZZLY GREEN TOUCH-UP PAINT
109	P0786109	GRIZZLY PUTTY TOUCH-UP PAINT

## **WARNING**

Safety labels help reduce the risk of serious injury caused by machine hazards. If any label comes off or becomes unreadable, the owner of this machine **MUST** replace it in the original location before resuming operations. For replacements, contact (800) 523-4777 or [www.grizzly.com](http://www.grizzly.com).

