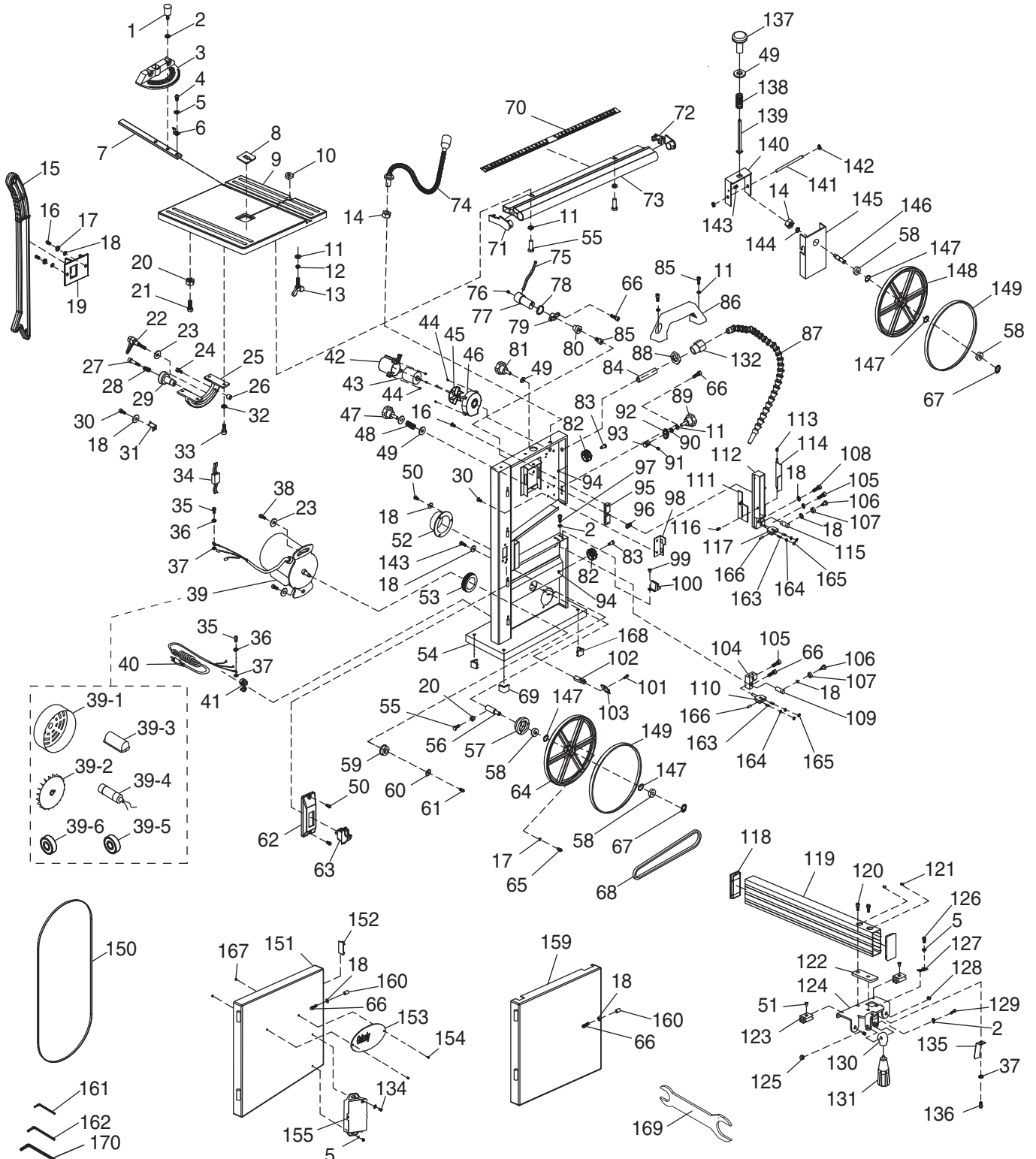


SECTION 9: PARTS

We do our best to stock replacement parts when possible, but we cannot guarantee that all parts shown are available for purchase. Call (800) 523-4777 or visit www.grizzly.com/parts to check for availability.

Main



Main Parts List

REF	PART #	DESCRIPTION
1	P0803Z001	KNOB BOLT M6-1 X 20, D21, TAPERED KN
2	P0803Z002	FLAT WASHER 6MM
3	P0803Z003	MITER GAUGE BODY W/SCALE
4	P0803Z004	PHLP HD SCR M4-.7 X 6
5	P0803Z005	FLAT WASHER 4MM
6	P0803Z006	MITER GAUGE SCALE POINTER
7	P0803Z007	MITER BAR
8	P0803Z008	TABLE INSERT
9	P0803Z009	TABLE
10	P0803Z010	"D" NUT M6-1
11	P0803Z011	FLAT WASHER 6MM
12	P0803Z012	LOCK WASHER 6MM
13	P0803Z013	WING BOLT M6-1 X 16
14	P0803Z014	HEX NUT M10-1.5
15	P0803Z015	PUSH STICK
16	P0803Z016	PHLP HD SCR M5-.8 X 12
17	P0803Z017	LOCK WASHER 5MM
18	P0803Z018	FLAT WASHER 5MM
19	P0803Z019	PUSH STICK HOLDER
20	P0803Z020	HEX NUT M6-1
21	P0803Z021	CAP SCREW M6-1 X 24
22	P0803Z022	ADJUSTABLE HANDLE 60L, M8-1.25 X 25
23	P0803Z023	FENDER WASHER 8MM
24	P0803Z024	CAP SCREW M6-1 X 14
25	P0803Z025	TRUNNION W/SCALE
26	P0803Z026	STANDOFF-ROUND FF M6-1 X 14
27	P0803Z027	SHOULDER SCREW M5-.8 X 10, 8 X 35
28	P0803Z028	COMPRESSION SPRING 0.8 X 10 X 25
29	P0803Z029	GEARED KNOB 8 X 39, D46, 12T
30	P0803Z030	PHLP HD SCR M5-.8 X 8
31	P0803Z031	TABLE TILT SCALE POINTER
32	P0803Z032	FLAT WASHER 8MM
33	P0803Z033	CAP SCREW M8-1.25 X 14
34	P0803Z034	LED TRANSFORMER
35	P0803Z035	PHLP HD SCR M5-.8 X 8
36	P0803Z036	LOCK WASHER 5MM
37	P0803Z037	EXT TOOTH WASHER 5MM
38	P0803Z038	CAP SCREW M8-1.25 X 20
39	P0803Z039	MOTOR 1/3HP 120V 1-PH
39-1	P0803Z039-1	MOTOR FAN COVER
39-2	P0803Z039-2	MOTOR FAN
39-3	P0803Z039-3	CAPACITOR COVER
39-4	P0803Z039-4	R CAPACITOR 20M 250-350V 1-3/8 X 2-3/8
39-5	P0803Z039-5	BALL BEARING 6201ZZ (REAR)
39-6	P0803Z039-6	BALL BEARING 6202ZZ (FRONT)
40	P0803Z040	POWER CORD 18G 3W 72" 5-15P
41	P0803Z041	STRAIN RELIEF TYPE-1 1/2
42	P0803Z042	CHIP BLOWER MOTOR COVER
43	P0803Z043	CHIP BLOWER MOTOR 3.5W 12V
44	P0803Z044	TAP SCREW M3 X 6
45	P0803Z045	CHIP BLOWER FAN
46	P0803Z046	CHIP BLOWER FAN COVER
47	P0803Z047	KNOB BOLT M8-1.25 X 14, D32, 6-LOBE
48	P0803Z048	COMPRESSION SPRING 1 X 13 X 18
49	P0803Z049	FLAT WASHER 8MM

REF	PART #	DESCRIPTION
50	P0803Z050	PHLP HD SCR M5-.8 X 10
51	P0803Z051	FLAT HD SCR M3-.5 X 4
52	P0803Z052	DUST PORT 2"
53	P0803Z053	FOAM GASKET 8 X 5 X 120
54	P0803Z054	FRAME
55	P0803Z055	HEX BOLT M6-1 X 16
56	P0803Z056	WHEEL SHAFT (LOWER)
57	P0803Z057	TIMING BELT PULLEY (WHEEL)
58	P0803Z058	BALL BEARING 6000-2RS
59	P0803Z059	TIMING BELT PULLEY (MOTOR)
60	P0803Z060	FENDER WASHER 5MM
61	P0803Z061	CAP SCREW M5-.8 X 10
62	P0803Z062	SWITCH MOUNTING PLATE
63	P0803Z063	GRIZZLY PADDLE SWITCH
64	P0803Z064	WHEEL (LOWER)
65	P0803Z065	PHLP HD SCR M5-.8 X 16
66	P0803Z066	CAP SCREW M5-.8 X 10
67	P0803Z067	EXT RETAINING RING 10MM
68	P0803Z068	TIMING BELT 130XL 10
69	P0803Z069	RUBBER FOOT-LEFT
70	P0803Z070	SCALE
71	P0803Z071	FENCE RAIL CAP (LEFT)
72	P0803Z072	FENCE RAIL CAP (RIGHT)
73	P0803Z073	FENCE RAIL
74	P0803Z074	WORKLAMP W/SWITCH, LED BULB 12V, 1W
75	P0803Z075	QUICK-RELEASE LEVER 8 X 95
76	P0803Z076	SET SCREW M5-.8 X 6
77	P0803Z077	QUICK-RELEASE ECCENTRIC SHAFT
78	P0803Z078	WAVY WASHER 16 X 21 X 0.3MM
79	P0803Z079	QUICK-RELEASE MOUNT BRACKET
80	P0803Z080	QUICK-RELEASE ECCENTRIC BUSHING
81	P0803Z081	KNOB BOLT M8-1.25 X 35, D32, 6-LOBE
82	P0803Z082	DOOR LOCK CAM KNOB 40D
83	P0803Z083	SHOULDER SCREW M5-.8 X 6, 8 X 12
84	P0803Z084	RUBBER TUBE 8 X 40
85	P0803Z085	CAP SCREW M6-1 X 20
86	P0803Z086	CARRYING HANDLE
87	P0803Z087	LOC-LINE 1/2 NPT, 15"
88	P0803Z088	HEX NUT M12-1.25 THIN BRASS
89	P0803Z089	KNOB W/SHAFT 6 X 22, D32, 6-LOBE
90	P0803Z090	WAVY WASHER 6MM
91	P0803Z091	SET SCREW M4-.7 X 4
92	P0803Z092	ADJUSTMENT KNOB SEAT
93	P0803Z093	GEAR 10T
94	P0803Z094	LOCK NUT M5-.8
95	P0803Z095	UPPER BLADE GUIDE BLOCK
96	P0803Z096	SQUARE NUT M8-1.25
97	P0803Z097	CAP SCREW M6-1 X 8
98	P0803Z098	BLADE GUIDE LIMIT PLATE
99	P0803Z099	FLAT HD SCR M4-.7 X 8
100	P0803Z100	BLADE COVER (LOWER)
101	P0803Z101	CAP SCREW M5-.8 X 6
102	P0803Z102	WHEEL BRUSH SEAT
103	P0803Z103	WHEEL BRUSH
104	P0803Z104	BLADE GUIDE BLOCK (LOWER)



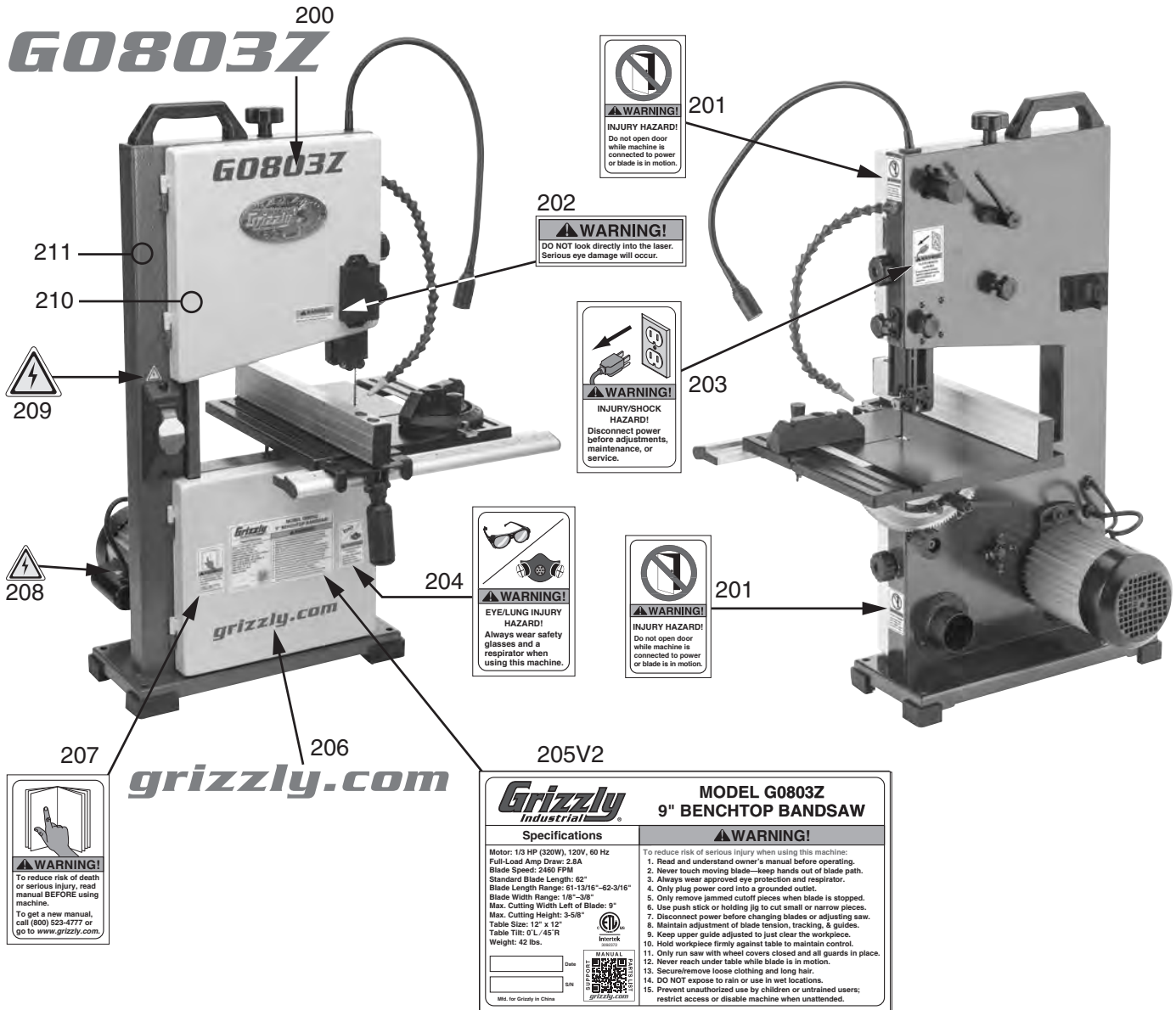
Main Parts List (Cont.)

REF	PART #	DESCRIPTION
105	P0803Z105	CAP SCREW M5-.8 X 12
106	P0803Z106	SHOULDER SCREW M5-.8 X 10, 6 X 6
107	P0803Z107	BALL BEARING 606-2RS
108	P0803Z108	CAP SCREW M5-.8 X 16
109	P0803Z109	BLADE GUIDE ROD (LOWER)
110	P0803Z110	BLADE GUIDE (LOWER)
111	P0803Z111	BLADE GUIDE SLIDING COVER (UPPER)
112	P0803Z112	BLADE GUIDE COVER (UPPER)
113	P0803Z113	DOWEL PIN 3 X 15 W/COMP SPRING
114	P0803Z114	BLADE GUIDE DOOR (UPPER)
115	P0803Z115	BLADE GUIDE ROD (UPPER)
116	P0803Z116	PHLP HD SCR M4-.7 X 10
117	P0803Z117	BLADE GUIDE (UPPER)
118	P0803Z118	FENCE END CAP
119	P0803Z119	FENCE
120	P0803Z120	CAP SCREW M6-1 X 8
121	P0803Z121	FENCE HOLE PLUG
122	P0803Z122	FENCE SPACER PLATE
123	P0803Z123	FENCE BASE CLIP
124	P0803Z124	FENCE BASE
125	P0803Z125	LOCK NUT M6-1
126	P0803Z126	PHLP HD SCR M4-.7 X 6
127	P0803Z127	FENCE POINTER
128	P0803Z128	SET SCREW M6-1 X 8
129	P0803Z129	CAP SCREW M6-1 X 30
130	P0803Z130	FENCE HANDLE LOCKING CAM
131	P0803Z131	FIXED HANDLE 32 X 76, M6-1 X 12
135	P0803Z135	SPRING PLATE
136	P0803Z136	PHLP HD SCR M5-.8 X 6
137	P0803Z137	KNOB M8-1.25, D50, 5-LOBE
138	P0803Z138	COMPRESSION SPRING 2.5 X 14 X 64

REF	PART #	DESCRIPTION
139	P0803Z139	CARRIAGE BOLT M8-1.25 X 80
140	P0803Z140	WHEEL ADJUSTMENT BRACKET
141	P0803Z141	QUICK-RELEASE PIVOT SHAFT 8 X 90
142	P0803Z142	EXT RETAINING RING 8MM PUSH-ON
143	P0803Z143	CAP SCREW M5-.8 X 8
144	P0803Z144	LOCK WASHER 10MM
145	P0803Z145	WHEEL MOUNT PLATE
146	P0803Z146	WHEEL SHAFT (UPPER)
147	P0803Z147	INT RETAINING RING 26MM
148	P0803Z148	WHEEL (UPPER)
149	P0803Z149	BANDSAW TIRE 9-5/16"
150	P0803Z150	BLADE 62" X 3/8" X 0.025" 10-TPI RAKER
151	P0803Z151	WHEEL COVER (UPPER)
152	P0803Z152	BLADE VIEW WINDOW, PLASTIC
153	P0803Z153	GRIZZLY NAMEPLATE-MINI
154	P0803Z154	PHLP HD SCR M3-.5 X 6
155	P0803Z155	LASER SIGHT UNIT
156	P0803Z156	LASER SIGHT SWITCH
157	P0803Z157	LASER SIGHT
158	P0803Z158	LASER SIGHT BOX COVER
159	P0803Z159	WHEEL COVER (LOWER)
160	P0803Z160	STANDOFF-SE-ROUND F M5-.8, 17
161	P0803Z161	HEX WRENCH 2.5MM
162	P0803Z162	HEX WRENCH 4MM
163	P0803Z163	BEARING SHAFT
164	P0803Z164	BALL BEARING 696-2RS
165	P0803Z165	EXT RETAINING RING 5MM
166	P0803Z166	SET SCREW M5-.8 X 5
167	P0803Z167	HEX NUT M3-.5



Labels & Cosmetics



REF	PART #	DESCRIPTION
200	P0803Z200	MODEL NUMBER LABEL
201	P0803Z201	DO NOT OPEN DOOR LABEL
202	P0803Z202	DO NOT LOOK INTO LASER LABEL
203	P0803Z203	DISCONNECT 110V POWER LABEL
204	P0803Z204	RESPIRATORY/GLASSES LABEL
205V2	P0803Z205V2	MACHINE ID LABEL V2.07.19

REF	PART #	DESCRIPTION
206	P0803Z206	GRIZZLY.COM LABEL
207	P0803Z207	READ MANUAL LABEL
208	P0803Z208	ELECTRICITY LABEL-SMALL
209	P0803Z209	ELECTRICITY LABEL-MEDIUM
210	P0803Z210	TOUCH-UP PAINT GREY PUTTY
211	P0803Z211	TOUCH-UP PAINT GRIZZLY GREEN

! WARNING

Safety labels help reduce the risk of serious injury caused by machine hazards. If any label comes off or becomes unreadable, the owner of this machine **MUST** replace it in the original location before resuming operations. For replacements, contact (800) 523-4777 or www.grizzly.com.

