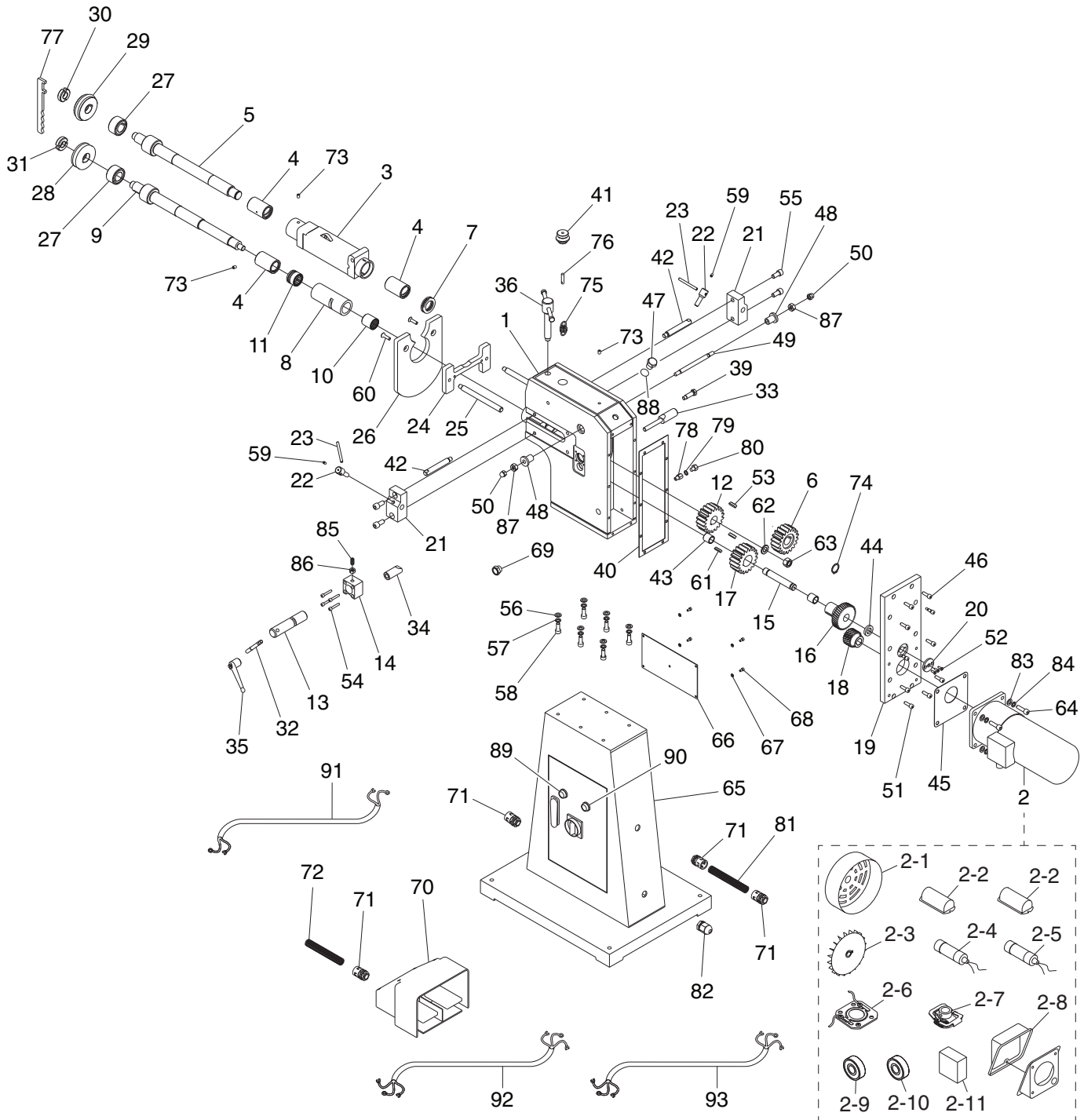


SECTION 9: PARTS

We do our best to stock replacement parts when possible, but we cannot guarantee that all parts shown are available for purchase. Call (800) 523-4777 or visit www.grizzly.com/parts to check for availability.

Main



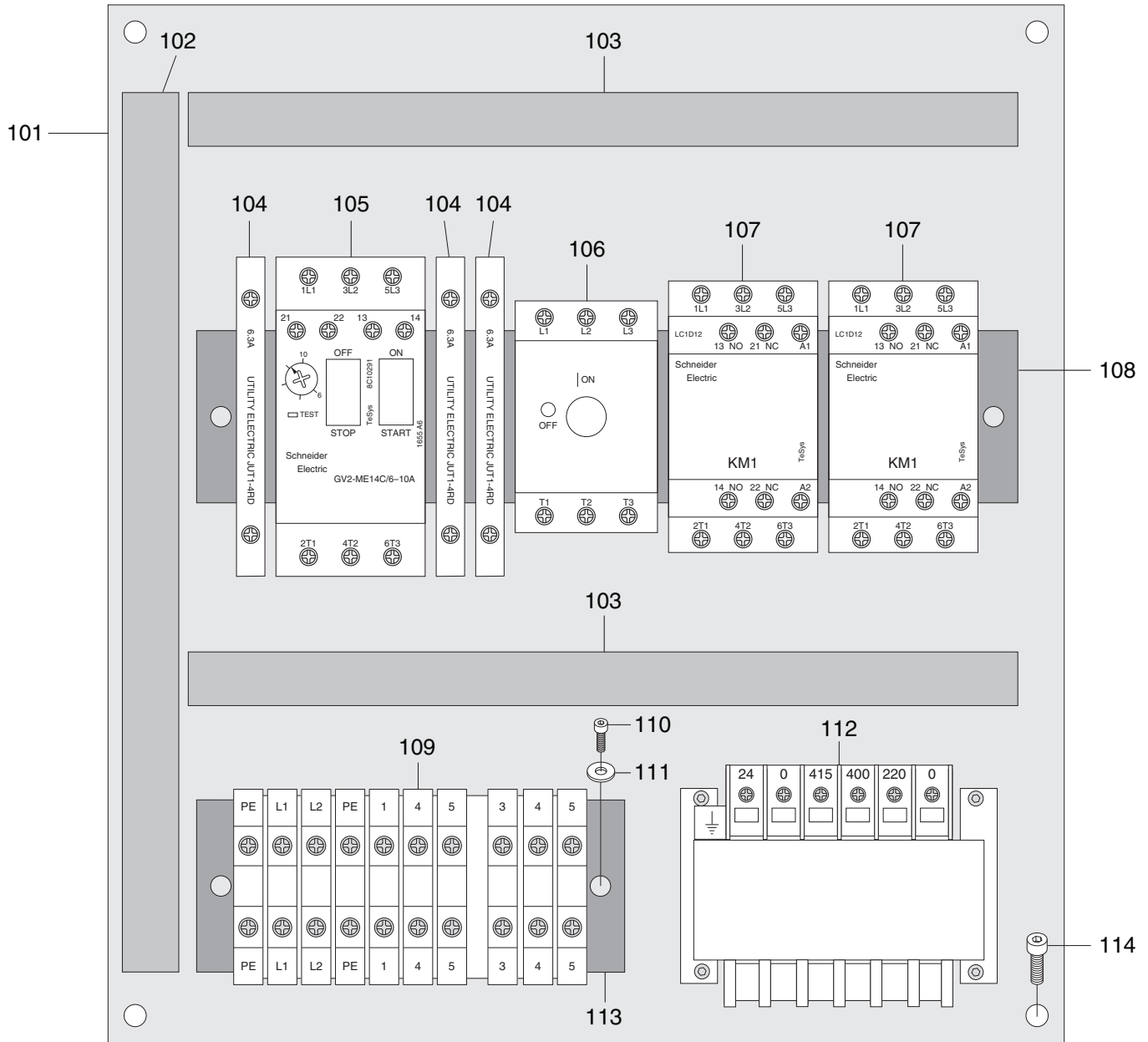
Main Parts List

REF PART #	DESCRIPTION
1	P0816001 HEADSTOCK
2	P0816002 MOTOR 1HP 220V 1-PH
2-1	P0816002-1 MOTOR FAN COVER
2-2	P0816002-2 CAPACITOR COVER
2-3	P0816002-3 MOTOR FAN
2-4	P0816002-4 R CAPACITOR 30M 450V 1-5/8 X 2-7/8
2-5	P0816002-5 S CAPACITOR 300M 275V 2 X 3-5/8
2-6	P0816002-6 CONTACT PLATE
2-7	P0816002-7 CENTRIFUGAL SWITCH
2-8	P0816002-8 MOTOR JUNCTION BOX
2-9	P0816002-9 BALL BEARING 6203ZZ (FRONT)
2-10	P0816002-10 BALL BEARING 6303ZZ (REAR)
2-11	P0816002-11 STARTING SWITCH ESS1-40
3	P0816003 UPPER SHAFT HOUSING
4	P0816004 BUSHING 35 X 45 X 67 (BRONZE)
5	P0816005 UPPER SHAFT
6	P0816006 GEAR 18T
7	P0816007 THRUST BEARING 51107
8	P0816008 LOWER SHAFT BUSHING
9	P0816009 LOWER SHAFT
10	P0816010 NEEDLE BEARING HK3038
11	P0816011 COMBINATION BEARING NKX30Z
12	P0816012 GEAR 18T
13	P0816013 LOWER MANDREL ADJUSTMENT SHAFT
14	P0816014 ADJUSTMENT SHAFT BLOCK
15	P0816015 GEAR SHAFT
16	P0816016 GEAR 40T
17	P0816017 GEAR 18T
18	P0816018 GEAR 24T
19	P0816019 GEAR COVER PLATE
20	P0816020 CLAMPING PLATE
21	P0816021 FENCE CLAMP BLOCK
22	P0816022 FENCE CLAMP BOLT M12-1.75 X 32
23	P0816023 FENCE CLAMP HANDLE 8 X 71
24	P0816024 FENCE MOUNTING PLATE
25	P0816025 FENCE SHAFT M12-1.75 X 16, 16 X 170
26	P0816026 FENCE FACE PLATE
27	P0816027 COLLAR 30 X 54 X 30
28	P0816028 MANDREL CONVEX 1/2" BEAD, 3-1/2 X 1"
29	P0816029 MANDREL CONCAVE 1/2" COVE, 3 X 1"
30	P0816030 MANDREL RETAINER NUT M22-2.5 LH
31	P0816031 MANDREL RETAINER NUT M22-2.5
32	P0816032 ADJUSTMENT SHAFT LEVER 3/8 X 3-1/2"
33	P0816033 CLAMP BLOCK SHAFT
34	P0816034 CLAMP BLOCK SLEEVE
35	P0816035 ADJUSTABLE HANDLE M12-1.75, 95L
36	P0816036 UPPER MANDREL CRANK M20-2.5 X 110
39	P0816039 HEX BOLT M12-1.75 X 42 DOG-PT
40	P0816040 GASKET
41	P0816041 SPRING TENSION KNOB M8-1.25, 42 X 33
42	P0816042 LIFTING ARM 12 X 14, 16 X 100

REF PART #	DESCRIPTION
43	P0816043 GEAR SHAFT BUSHING
44	P0816044 SPACER
45	P0816045 MOTOR GASKET
46	P0816046 CAP SCREW M8-1.25 X 25
47	P0816047 OIL FILL PLUG M20-1.5 X 18
48	P0816048 BUSHING
49	P0816049 SHOULDER STUD-DE M10-1.5 X 14, 12 X 127
50	P0816050 ACORN NUT M10-1.5
51	P0816051 HEX BOLT M8-1.25 X 25
52	P0816052 FLAT HD CAP SCR M5-.8 X 16
53	P0816053 KEY 8 X 8 X 28
54	P0816054 CAP SCREW M6-1 X 35
55	P0816055 CAP SCREW M12-1.75 X 25
56	P0816056 FLAT WASHER 10MM
57	P0816057 LOCK WASHER 10MM
58	P0816058 CAP SCREW M10-1.5 X 25
59	P0816059 SET SCREW M4-.7 X 8
60	P0816060 FLAT HD CAP SCR M8-1.25 X 25
61	P0816061 KEY 6 X 6 X 28
62	P0816062 FLAT WASHER 16MM
63	P0816063 HEX NUT M16-2
64	P0816064 CAP SCREW M10-1.5 X 35
65	P0816065 STAND
66	P0816066 COVER PLATE
67	P0816067 FLAT WASHER 5MM
68	P0816068 CAP SCREW M5-.8 X 10
69	P0816069 OIL SIGHT GLASS M20-1.5
70	P0816070 FOOT PEDAL ASSY YEUQING ENCHI ECFS-H5(LTH)
71	P0816071 STRAIN RELIEF M20-1.5 TYPE-5
72	P0816072 CONDUIT 7/8 X 51"
73	P0816073 BALL OILER 8MM PRESS-IN
74	P0816074 EXT RETAINING RING 28MM
75	P0816075 EXTENSION SPRING 3 X 22 X 54
76	P0816076 PULL ROD M8-1.25 X 36
77	P0816077 RETAINER NUT SPANNER WRENCH
78	P0816078 STANDOFF-HEX MF M10-1 X 8, M10-1
79	P0816079 FLAT WASHER 10MM CP
80	P0816080 DRAIN PLUG M10-1 X 10
81	P0816081 CONDUIT 7/8 X 16"
82	P0816082 STRAIN RELIEF M20-1.5 TYPE-3
83	P0816083 FLAT WASHER 10MM
84	P0816084 LOCK WASHER 10MM
85	P0816085 SET SCREW M12-1.75 X 30 DOG-PT
86	P0816086 HEX NUT M12-1.75
87	P0816087 HEX NUT M10-1.5
88	P0816088 O-RING 19.8 X 2.4 P20
89	P0816089 POWER LAMP YIJIA AD16-22DS 24V 22MM WHT
90	P0816090 POWER LAMP YIJIA AD16-22DS 24V 22MM RED
91	P0816091 SWITCH CORD 14G 2W 72"
92	P0816092 MOTOR CORD 14G 3W 24"
93	P0816093 POWER CORD 14G 3W 72"



Electrical Panel

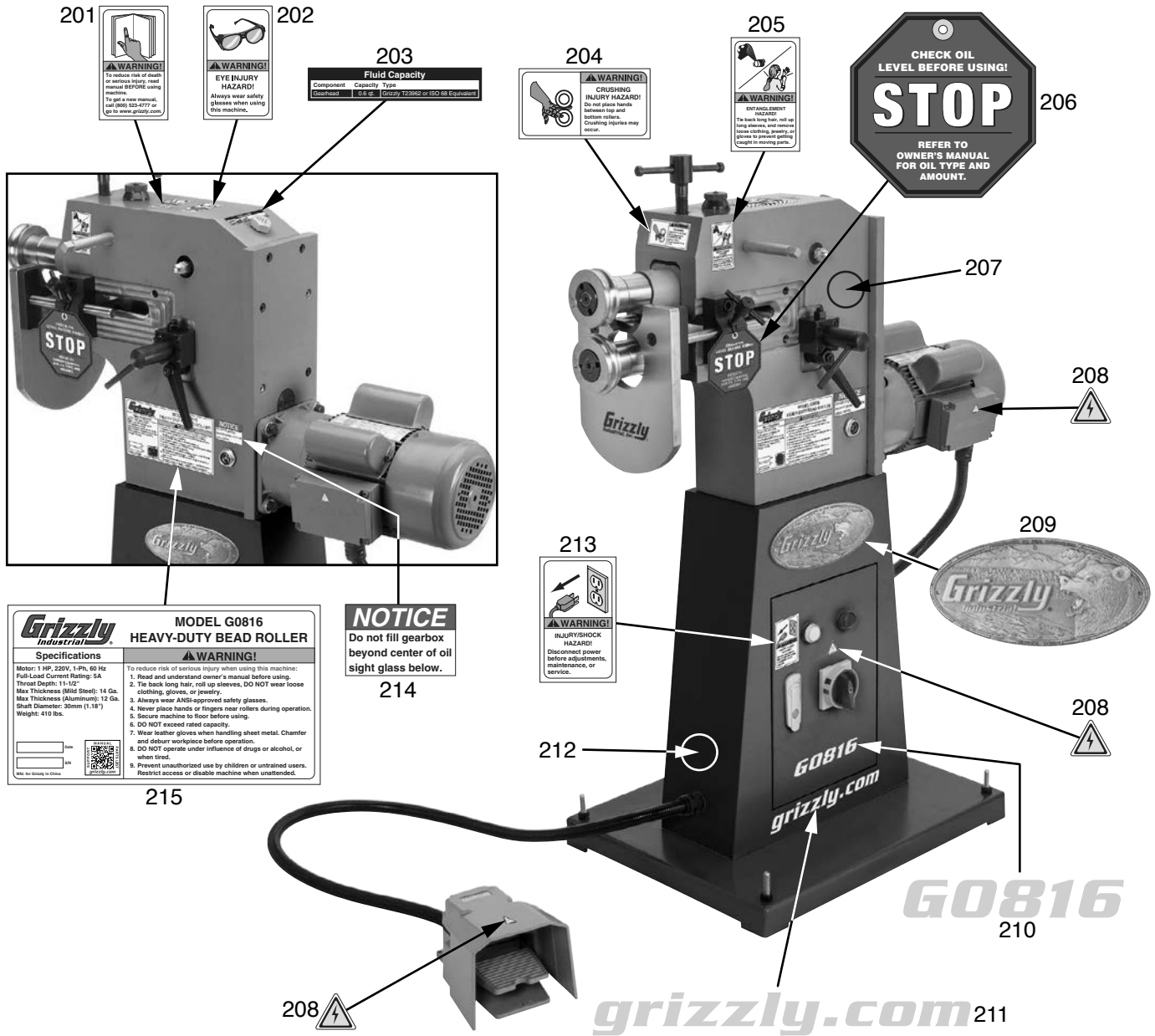


REF PART #	DESCRIPTION
101	P0816101 ELECTRICAL PANEL MOUNTING PLATE
102	P0816102 WIRE RACE 210MM
103	P0816103 WIRE RACE 176MM
104	P0816104 TERMINAL BLOCK UTILITY ELEC. JUT1-4RD 6.3A
105	P0816105 OL RELAY SCHN GV2ME14C/6-10A
106	P0816106 MASTER POWER SWITCH ASSEMBLY
107	P0816107 CONTACTOR SCHN LC1D12

REF PART #	DESCRIPTION
108	P0816108 DIN RAIL (UPPER)
109	P0816109 TERMINAL BAR 10P
110	P0816110 CAP SCREW M4-.7 X 8
111	P0816111 FLAT WASHER 4MM
112	P0816112 TRANSFORMER BEIJING AOHENGDA JBK5-63VA
113	P0816113 DIN RAIL (LOWER)
114	P0816114 CAP SCREW M6-1 X 12



Labels



REF	PART #	DESCRIPTION
201	P0816201	READ MANUAL LABEL
202	P0816202	EYE INJURY HAZARD LABEL
203	P0816203	FLUID CAPACITY LABEL
204	P0816204	CRUSHING INJURY HAZARD LABEL
205	P0816205	ENTANGLEMENT INJURY HAZARD LABEL
206	P0816206	STOP OIL FILL TAG
207	P0816207	TOUCH-UP PAINT, GRIZZLY GREEN
208	P0816208	ELECTRICITY LABEL

REF	PART #	DESCRIPTION
209	P0816209	GRIZZLY NAMEPLATE
210	P0816210	MODEL NUMBER LABEL
211	P0816211	GRIZZLY.COM LABEL
212	P0816212	TOUCH-UP PAINT, GLOSSY BLACK
213	P0816213	DISCONNECT POWER LABEL
214	P0816214	GEARBOX FILL LEVEL NOTICE
215	P0816215	MACHINE ID LABEL

⚠ WARNING

Safety labels help reduce the risk of serious injury caused by machine hazards. If any label comes off or becomes unreadable, the owner of this machine **MUST** replace it in the original location before resuming operations. For replacements, contact (800) 523-4777 or www.grizzly.com.

