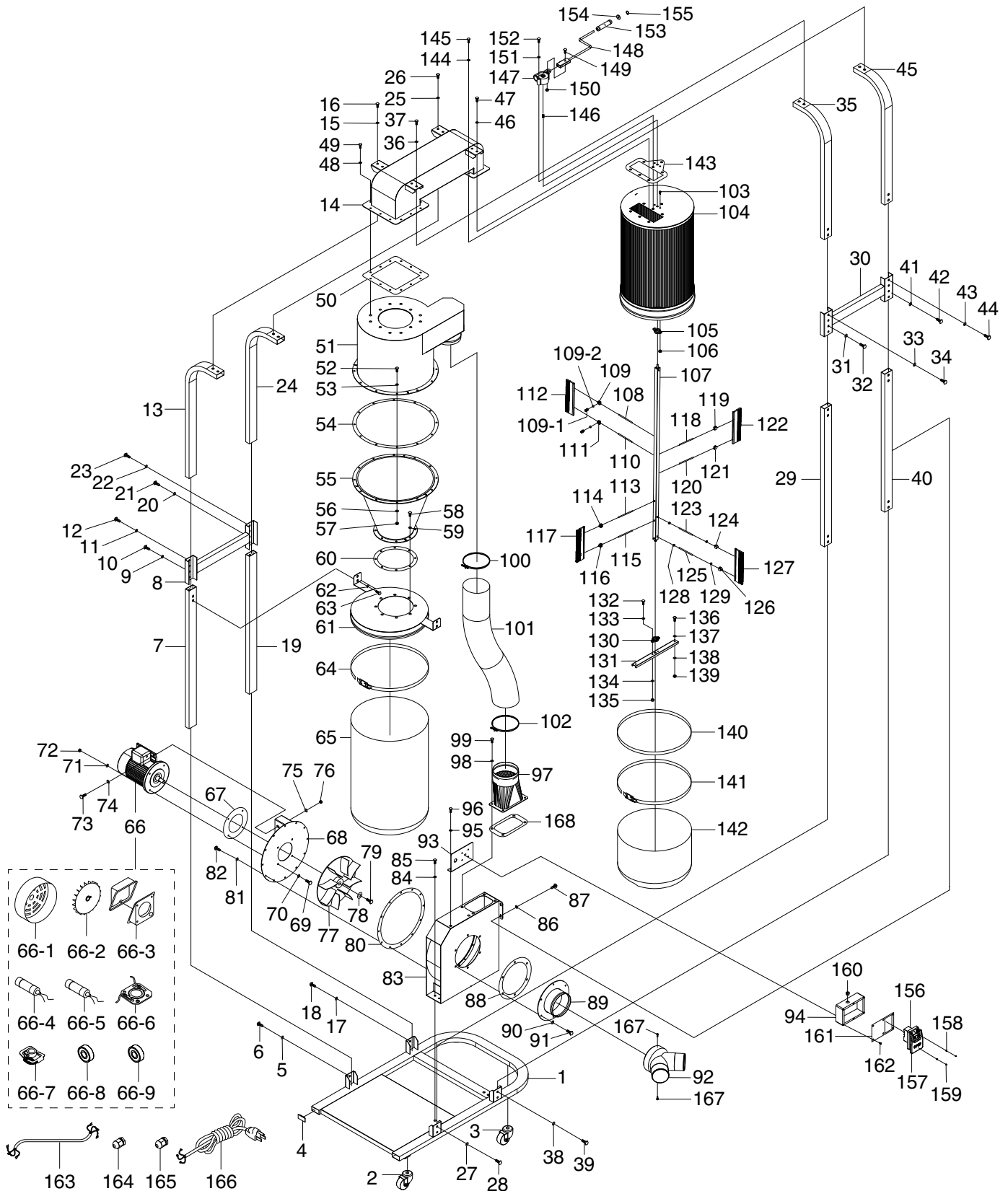


# SECTION 10: PARTS

## Main



Model G0852 (Mfd. Since 12/18)



**BUY PARTS ONLINE AT GRIZZLY.COM!**  
Scan QR code to visit our Parts Store.



# Main Parts List

REF	PART #	DESCRIPTION
1	P0852001	STAND BASE
2	P0852002	SWIVEL CASTER 3"
3	P0852003	SWIVEL CASTER 3" LOCKING
4	P0852004	TUBE END PLUG
5	P0852005	FENDER WASHER 5/16
6	P0852006	HEX BOLT 5/16-18 X 3/4
7	P0852007	FRONT LOWER LEG
8	P0852008	LEG BRACE
9	P0852009	FENDER WASHER 5/16
10	P0852010	HEX BOLT 5/16-18 X 3/4
11	P0852011	FENDER WASHER 5/16
12	P0852012	HEX BOLT 5/16-18 X 3/4
13	P0852013	UPPER LEG
14	P0852014	UPPER COVER
15	P0852015	FENDER WASHER 5/16
16	P0852016	HEX BOLT 5/16-18 X 3/4
17	P0852017	FENDER WASHER 5/16
18	P0852018	HEX BOLT 5/16-18 X 3/4
19	P0852019	LEFT REAR LOWER LEG
20	P0852020	FENDER WASHER 5/16
21	P0852021	HEX BOLT 5/16-18 X 3/4
22	P0852022	FENDER WASHER 5/16
23	P0852023	HEX BOLT 5/16-18 X 3/4
24	P0852024	UPPER LEG
25	P0852025	FENDER WASHER 5/16
26	P0852026	HEX BOLT 5/16-18 X 3/4
27	P0852027	FENDER WASHER 5/16
28	P0852028	HEX BOLT 5/16-18 X 3/4
29	P0852029	FRONT LOWER LEG
30	P0852030	LEG BRACE
31	P0852031	FENDER WASHER 5/16
32	P0852032	HEX BOLT 5/16-18 X 3/4
33	P0852033	FENDER WASHER 5/16
34	P0852034	HEX BOLT 5/16-18 X 3/4
35	P0852035	UPPER LEG
36	P0852036	FENDER WASHER 5/16
37	P0852037	HEX BOLT 5/16-18 X 3/4
38	P0852038	FENDER WASHER 5/16
39	P0852039	HEX BOLT 5/16-18 X 3/4
40	P0852040	RIGHT REAR LOWER LEG
41	P0852041	FENDER WASHER 5/16
42	P0852042	HEX BOLT 5/16-18 X 3/4
43	P0852043	FENDER WASHER 5/16
44	P0852044	HEX BOLT 5/16-18 X 3/4
45	P0852045	UPPER LEG
46	P0852046	FENDER WASHER 5/16
47	P0852047	HEX BOLT 5/16-18 X 3/4
48	P0852048	FENDER WASHER 5/16
49	P0852049	HEX BOLT 5/16-18 X 3/4
50	P0852050	UPPER COVER GASKET 11" X 11"
51	P0852051	INTAKE BARREL
52	P0852052	HEX BOLT 5/16-18 X 1
53	P0852053	FENDER WASHER 5/16

REF	PART #	DESCRIPTION
54	P0852054	CYCLONE FUNNEL GASKET
55	P0852055	CYCLONE FUNNEL
56	P0852056	FENDER WASHER 5/16
57	P0852057	HEX NUT 5/16-18
58	P0852058	HEX BOLT 5/16-18 X 3/4
59	P0852059	FLAT WASHER 5/16
60	P0852060	COLLECTION LID GASKET
61	P0852061	COLLECTION BAG LID
62	P0852062	FENDER WASHER 5/16
63	P0852063	HEX BOLT 5/16-18 X 3/4
64	P0852064	COLLECTION BAG CLAMP 17-3/4"
65	P0852065	COLLECTION BAG 17-3/4" X 35-1/2"
66	P0852066	MOTOR 1.5 HP 120V/240V 1-PH
66-1	P0852066-1	MOTOR FAN COVER
66-2	P0852066-2	MOTOR FAN
66-3	P0852066-3	MOTOR JUNCTION BOX
66-4	P0852066-4	S CAPACITOR 300M 125V 1-3/8 X 3-1/2
66-5	P0852066-5	R CAPACITOR 50M 250V 1-3/8 X 2-3/4
66-6	P0852066-6	CONTACT PLATE
66-7	P0852066-7	CENTRIFUGAL SWITCH
66-8	P0852066-8	BALL BEARING 6205ZZ
66-9	P0852066-9	BALL BEARING 6203ZZ
67	P0852067	MOTOR MOUNT GASKET
68	P0852068	IMPELLER COVER
69	P0852069	HEX BOLT 5/16-18 X 1
70	P0852070	FLAT WASHER 5/16
71	P0852071	FLAT WASHER 5/16
72	P0852072	LOCK NUT 5/16-18
73	P0852073	HEX BOLT 5/16-18 X 1
74	P0852074	FENDER WASHER 5/16
75	P0852075	FENDER WASHER 5/16
76	P0852076	LOCK NUT 5/16-18
77	P0852077	IMPELLER 12-1/2"
78	P0852078	IMPELLER WASHER 5/16 X 1-1/4 X 3/32
79	P0852079	HEX BOLT 5/16-18 X 1
80	P0852080	IMPELLER GASKET
81	P0852081	FENDER WASHER 5/16
82	P0852082	HEX BOLT 5/16-18 X 3/4
83	P0852083	IMPELLER HOUSING
84	P0852084	FENDER WASHER 5/16
85	P0852085	HEX BOLT 5/16-18 X 3/4
86	P0852086	FENDER WASHER 5/16
87	P0852087	HEX BOLT 5/16-18 X 3/4
88	P0852088	INLET PORT GASKET
89	P0852089	INLET PORT 6"
90	P0852090	FENDER WASHER 1/4
91	P0852091	HEX BOLT 1/4-20 X 3/4
92	P0852092	INLET ADAPTER 6" X 4" X 4"
93	P0852093	SWITCH BOX BRACKET
94	P0852094	SWITCH BOX
95	P0852095	FENDER WASHER 5/16
96	P0852096	HEX BOLT 5/16-18 X 3/4
97	P0852097	EXHAUST PORT



# Main Parts List (Cont.)

REF	PART #	DESCRIPTION
98	P0852098	FENDER WASHER 5/16
99	P0852099	HEX BOLT 5/16-18 X 3/4
100	P0852100	HOSE CLAMP 6-1/2"
101	P0852101	FLEX HOSE 6" X 32-5/8"
102	P0852102	HOSE CLAMP 6-1/2"
103	P0852103	PHLP HD SCR 1/4-20 X 1-1/4
104	P0852104	CANISTER FILTER 17" X 26"
105	P0852105	PILLOW BLOCK BEARING
106	P0852106	LOCK NUT 1/4-20
107	P0852107	BRUSH SPINDLE
108	P0852108	STUD-FT 1/4-20 X 7
109	P0852109	BRUSH BRACKET
109-1	P0852109-1	SET SCREW M8-1.25 X 8 HOLLOW TIP
109-2	P0852109-2	PLASTIC TIP 6MM
110	P0852110	STUD-FT 1/4-20 X 7
111	P0852111	BRUSH BRACKET
112	P0852112	FILTER BRUSH (PVC)
113	P0852113	STUD-FT 1/4-20 X 7
114	P0852114	BRUSH BRACKET
115	P0852115	STUD-FT 1/4-20 X 7
116	P0852116	BRUSH BRACKET
117	P0852117	FILTER BRUSH (PVC)
118	P0852118	STUD-FT 1/4-20 X 7
119	P0852119	BRUSH BRACKET
120	P0852120	STUD-FT 1/4-20 X 7
121	P0852121	BRUSH BRACKET
122	P0852122	FILTER BRUSH (PVC)
123	P0852123	STUD-FT 1/4-20 X 7
124	P0852124	BRUSH BRACKET
125	P0852125	STUD-FT 1/4-20 X 7
126	P0852126	BRUSH BRACKET
127	P0852127	FILTER BRUSH (PVC)
128	P0852128	HEX NUT 1/4-20
129	P0852129	HEX NUT 1/4-20
130	P0852130	PILLOW BLOCK BEARING
131	P0852131	FILTER BRUSH BASE
132	P0852132	HEX BOLT 1/4-20 X 1

REF	PART #	DESCRIPTION
133	P0852133	FLAT WASHER 1/4
134	P0852134	FLAT WASHER 1/4
135	P0852135	LOCK NUT 1/4-20
136	P0852136	HEX BOLT 5/16-18 X 3/4
137	P0852137	FLAT WASHER 5/16
138	P0852138	FLAT WASHER 5/16
139	P0852139	LOCK NUT 5/16-18
140	P0852140	FOAM SEALING BAND
141	P0852141	FILTER BAG CLAMP 19"
142	P0852142	FILTER BAG 18" X 23-5/8"
143	P0852143	CANISTER FILTER GASKET
144	P0852144	FENDER WASHER 5/16
145	P0852145	HEX BOLT 1/4-20 X 3/4
146	P0852146	BRUSH SPINDLE BLOCK
147	P0852147	FILTER BRUSH GEAR
148	P0852148	FILTER BRUSH HANDLE
149	P0852149	HEX BOLT 5/16-18 X 1
150	P0852150	LOCK NUT 5/16-18
151	P0852151	FLAT WASHER 5/16
152	P0852152	HEX BOLT 5/16-18 X 2-1/2
153	P0852153	FILTER BRUSH ROTATING HANDLE
154	P0852154	FLAT WASHER 3/8
155	P0852155	EXT RETAINING RING 10MM
156	P0852156	ON/OFF SWITCH KEDU HY56
157	P0852157	STOP PADDLE KEDU HY56-P3
158	P0852158	STANDOFF HEX FF M3-.5 X 7
159	P0852159	PHLP HD SCR M3-.5 X 6
160	P0852160	STRAIN RELIEF TYPE-1 3/8"
161	P0852161	SWITCH BOX COVER
162	P0852162	TAP SCREW M5 X 12
163	P0852163	MOTOR CORD 12G 3W 18"
164	P0852164	STRAIN RELIEF TYPE-3 PG13.5
165	P0852165	STRAIN RELIEF TYPE-3 PG11
166	P0852166	POWER CORD 12G 3W 72" 5-15P
167	P0852167	PHLP HD SCR 10-24 X 1/2
168	P0852168	EXHAUST PORT GASKET

We do our best to stock replacement parts when possible, but we cannot guarantee that all parts shown are available for purchase. Call **(800) 523-4777** or visit **[www.grizzly.com/parts](http://www.grizzly.com/parts)** to check for availability.



# Labels & Cosmetics

201

# G0852

202

Grizzly Industrial		MODEL G0852 1.5HP QUIET CYCLONE DUST COLLECTOR	
<b>Specifications</b>		<b>WARNING!</b>	
Motor: 1.5 HP, 115V, 1.8PH, 60 Hz Full-Load Current Rating: 15A Suction Capacity: 780 CFM @ 2.0" SP Max. Static Pressure: 10.8" Inlet Size: 6" Cyclone Filter: 17" x 26" Filter Performance: 99.9% at 0.2 - 2 Microns Replacement Filter: T30821 Replacement Filter Bag: T30289 Replacement Collection Bag: T30328 Weight: 247 lbs.		To reduce the risk of serious injury when using this machine: 1. Read and understand owner's manual before operating. 2. Always wear approved eye protection and respirator. 3. Only plug power cord into a grounded outlet. 4. Only use this machine to collect wood dust/chips—never use to collect glass, metal, liquids, asbestos, silica, animal parts, biohazards, burning materials/ashes, etc. 5. Always disconnect power before servicing or cleaning. 6. Do not expose to rain or use in wet areas. 7. Keep hands, long hair, and loose clothing away from inlet. 8. Never leave machine unattended during operation. 9. Do not use if cord, plug, or any other electrical equipment becomes damaged—promptly repair! 10. Do not use without dust bags or filter in place. 11. Do not connect cord to power supply with wet hands. 12. Grasp and pull the plug, not the cord, when unplugging. 13. Always wear a respirator when emptying bags. 14. Do not modify machine in any way. 15. Prevent unauthorized use by children or untrained users; disable machine when unattended.	

203



204



205



206



207



208



209



210



**WARNING**  
Safety labels help reduce the risk of serious injury caused by machine hazards. If any label comes off or becomes unreadable, the owner of this machine **MUST** replace it in the original location before resuming operations. For replacements, contact (800) 523-4777 or go to [www.grizzly.com](http://www.grizzly.com).

**grizzly.com**

REF	PART #	DESCRIPTION
201	P0852201	MODEL NUMBER LABEL
202	P0852202	MACHINE ID LABEL
203	P0852203	READ MANUAL LABEL
204	P0852204	DISCONNECT POWER LABEL
205	P0852205	EYES-LUNGS WARNING LABEL

REF	PART #	DESCRIPTION
206	P0852206	ELECTRICITY LABEL
207	P0852207	AMPUTATION WARNING LABEL
208	P0852208	TOUCH-UP PAINT, GRIZZLY BEIGE
209	P0852209	TOUCH-UP PAINT, GRIZZLY GREEN
210	P0852210	GRIZZLY.COM LABEL

