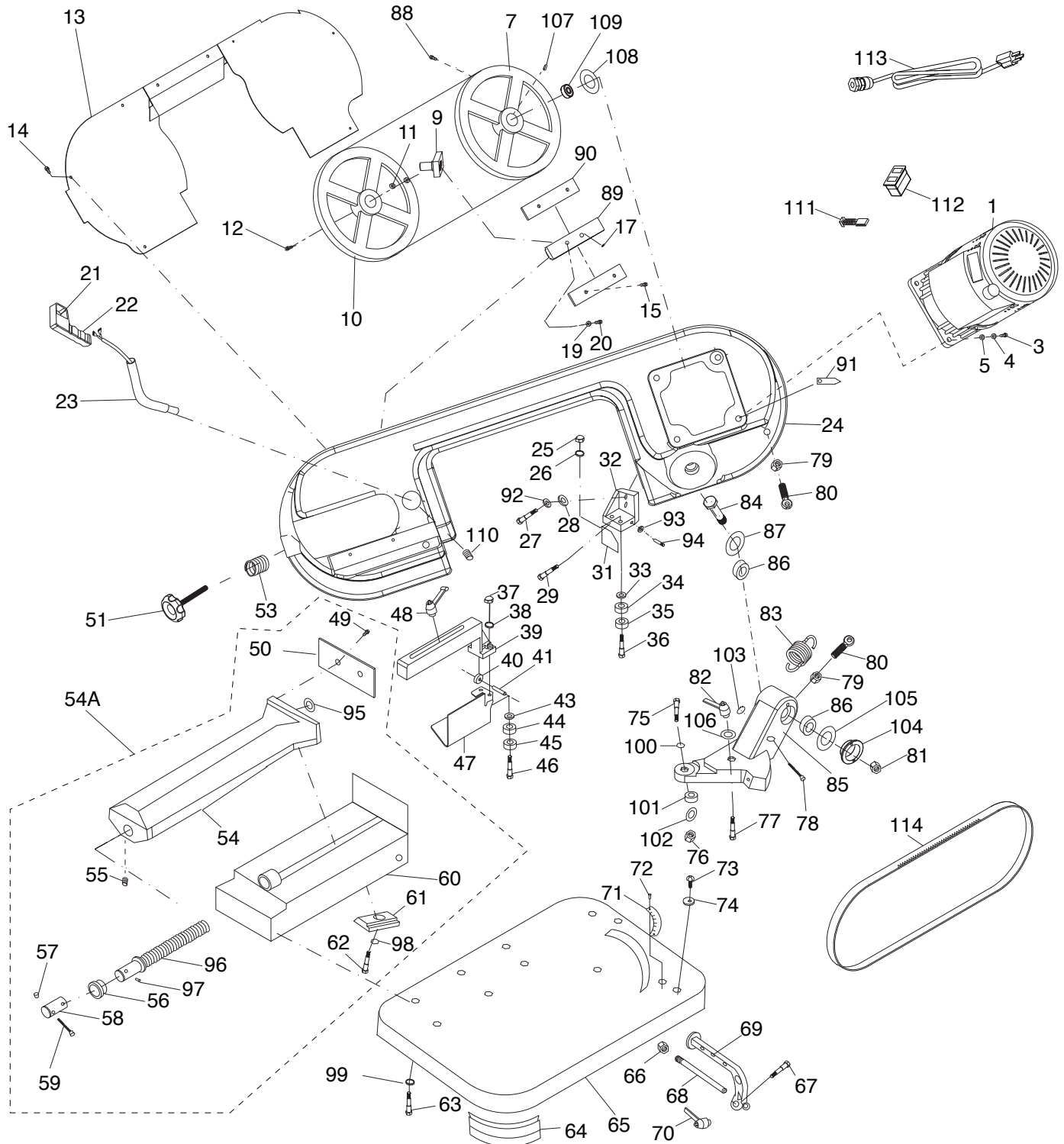


SECTION 9: PARTS

We do our best to stock replacement parts when possible, but we cannot guarantee that all parts shown are available for purchase. Call (800) 523-4777 or visit www.grizzly.com/parts to check for availability.

Main



Main Parts List

REF	PART #	DESCRIPTION
1	P0885001	MOTOR ASSEMBLY 1/2HP 120V 1-PH
3	P0885003	CAP SCREW M8-1.25 X 25
4	P0885004	LOCK WASHER 8MM
5	P0885005	FLAT WASHER 8MM
7	P0885007	DRIVE WHEEL
9	P0885009	IDLER SHAFT BLOCK
10	P0885010	IDLER WHEEL
11	P0885011	BALL BEARING 6202ZZ
12	P0885012	FLAT HD CAP SCR M8-1.25 X 16
13	P0885013	BLADE COVER
14	P0885014	PHLP HD SCR M4-.7 X 8
15	P0885015	CAP SCREW M5-.8 X 25
17	P0885017	SET SCREW M8-1.25 X 16
19	P0885019	LOCK WASHER 8MM
20	P0885020	CAP SCREW M8-1.25 X 25
21	P0885021	TRIGGER SWITCH TWCHT CMV100D 220V
22	P0885022	TRIGGER HOUSING
23	P0885023	TRIGGER HANDLE BAR
24	P0885024	BODY FRAME
25	P0885025	ACORN NUT M6-1
26	P0885026	LOCK WASHER 6MM
27	P0885027	CAP SCREW M6-1 X 25
28	P0885028	FENDER WASHER 6MM
29	P0885029	PHLP HD SCR M5-.8 X 8
31	P0885031	CHIP FENCE
32	P0885032	FIXED BLADE GUIDE BLOCK
33	P0885033	FLAT WASHER 6MM
34	P0885034	BALL BEARING 607-2RS
35	P0885035	BALL BEARING 607-2RS
36	P0885036	ECCENTRIC HEX BOLT M6-1 X 40
37	P0885037	ACORN NUT M6-1
38	P0885038	FLAT WASHER 6MM
39	P0885039	ADJUSTABLE BLADE GUIDE BLOCK
40	P0885040	BALL BEARING 625-2RS
41	P0885041	DOWEL PIN 5 X 23.5
43	P0885043	FLAT WASHER 6MM
44	P0885044	BALL BEARING 607RS
45	P0885045	BALL BEARING 607RS
46	P0885046	ECCENTRIC HEX BOLT M6-1 X 40
47	P0885047	BLADE GUARD
48	P0885048	ADJUSTABLE HANDLE M6-1, 42L
49	P0885049	FLAT HD CAP SCR M6-1 X 8
50	P0885050	WISE PLATE
51	P0885051	KNOB BOLT M10-1.5 X 80, 6-LOBE, D60
53	P0885053	COMPRESSION SPRING 1 X 10 X 20
54	P0885054	WISE JAW
54A	P0885054A	WISE ASSEMBLY
55	P0885055	SET SCREW M4-.7 X 6
56	P0885056	BUSHING
57	P0885057	HANDLE ROD END M8-1, D13, TAPERED
58	P0885058	HANDLE HUB 25OD X 42L
59	P0885059	HANDLE ROD M8-1, 132L
60	P0885060	WISE BASE
61	P0885061	LEADSCREW GUIDE

REF	PART #	DESCRIPTION
62	P0885062	HEX BOLT M6-1 X 25
63	P0885063	CAP SCREW M8-1.25 X 16
64	P0885064	PLASTIC FOOT
65	P0885065	BASE
66	P0885066	HEX NUT M12-1.75
67	P0885067	HEX BOLT M6-1 X 25
68	P0885068	STUD-SE M12-1.75 X 500, 21
69	P0885069	WORK STOP
70	P0885070	ADJUSTABLE HANDLE M6-1, 42L
71	P0885071	MITER SCALE
72	P0885072	PHLP HD SCR M4-.7 X 8
73	P0885073	CAP SCREW M6-1 X 12
74	P0885074	CAM 6 X 21.5 X 3MM
75	P0885075	CAP SCREW M6-1 X 40
76	P0885076	HEX NUT M6-1
77	P0885077	CARRIAGE BOLT M10-1.5 X 35
78	P0885078	LOCKING PIN 8.5 X 77MM
79	P0885079	HEX NUT M10-1.5
80	P0885080	EYE BOLT 7MM, M10-1.5 X 25
81	P0885081	LOCK NUT M12-1.75
82	P0885082	ADJUSTABLE HANDLE M10-1.5, 84L
83	P0885083	EXTENSION SPRING 3 X 20 X 40
84	P0885084	HEX BOLT M12-1.75 X 75
85	P0885085	MITER PLATE BRACKET
86	P0885086	BALL BEARING 30202
87	P0885087	LOCK WASHER 10MM
88	P0885088	FLAT HD CAP SCR M6-1 X 16
89	P0885089	BLADE TENSION SLIDE BLOCK
90	P0885090	BLADE TENSION SLIDE
91	P0885091	POINTER
92	P0885092	FLAT WASHER 6MM
93	P0885093	BALL BEARING 625RS
94	P0885094	DOWEL PIN 5 X 31
95	P0885095	SNAP RING 9MM
96	P0885096	WISE LEADSCREW
97	P0885097	ROLL PIN 5 X 25
98	P0885098	LOCK WASHER 6MM
99	P0885099	LOCK WASHER 8MM
100	P0885100	FENDER WASHER 6MM
101	P0885101	BUSHING
102	P0885102	FENDER WASHER 8MM
103	P0885103	E-CLIP 7MM
104	P0885104	BUSHING 12 X 28 X 2MM
105	P0885105	BEARING COVER
106	P0885106	FENDER WASHER 10MM
107	P0885107	KEY 4 X 4 X 18
108	P0885108	FENDER WASHER 6MM
109	P0885109	BALL BEARING 6202-2RS
110	P0885110	SET SCREW M6-1 X 8
111	P0885111	MOTOR CARBON BRUSH 2-PC SET
112	P0885112	ON/OFF SWITCH KEDU KJD20-2 120V
113	P0885113	POWER CORD 18G 3W 72" 5-15P
114	P0885114	BLADE 1440 X 13 X .65MM 12-TPI RAKER



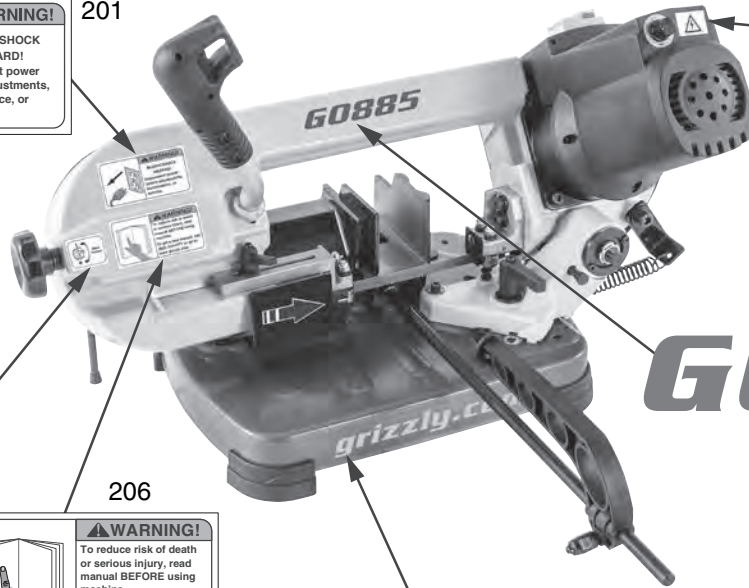
Labels & Cosmetics



201



202

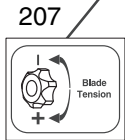


203

G0885

204

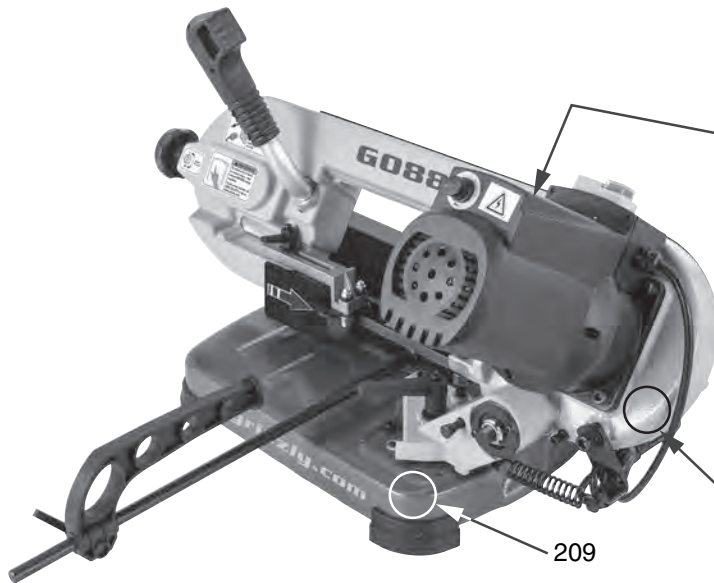
grizzly.com



207



206



205

Grizzly Industrial		MODEL G0885
Specifications		PORTABLE METAL-CUTTING BANDSAW
⚠ WARNING!		
Main Motor: 1/2 HP, 120V, 1-Ph, 60 Hz Full-Load Current Rating: 5A Blade Speeds: 100 – 260 FPM Blade Length: 56-1/2" Blade Size Range: 1/2" Max Round at 90°: 4-3/4" Max Rect. at 90°: 4-3/4" H x 5" W Angle Cuts: 0° – 60° Weight: 44 lbs.		To reduce risk of serious injury when using this machine: 1. Read and understand owner's manual before operating. 2. Never touch moving blade—keep hands out of blade path. 3. Always wear approved eye protection and respirator. 4. Only plug power cord into a grounded outlet. 5. Only remove jammed cutoff pieces when blade is stopped. 6. Disconnect power before changing blades or adjusting. 7. Maintain adjustment of blade tension, tracking, & guides. 8. Always ensure workpiece is securely clamped in vise during cutting operation. 9. Only run saw with wheel covers closed & all guards in place. 10. DO NOT wear loose clothing, gloves, jewelry, or other articles that can get entangled. Tie back long hair and roll up sleeves. 11. DO NOT expose to rain or use in wet locations. 12. Prevent unauthorized use by children or untrained users; restrict access or disable machine when unattended.
Date	MANUAL	
S/N	QR CODE	
Mfd. for Grizzly in Taiwan		grizzly.com

209

208

REF	PART #	DESCRIPTION
201	P0885201	DISCONNECT POWER LABEL
202	P0885202	ELECTRICITY LABEL
203	P0885203	MODEL NUMBER LABEL
204	P0885204	GRIZZLY.COM LABEL
205	P0885205	MACHINE ID LABEL

REF	PART #	DESCRIPTION
206	P0885206	READ MANUAL LABEL
207	P0885207	BLADE TENSION LABEL
208	P0885208	TOUCH-UP PAINT, GRIZZLY BEIGE
209	P0885209	TOUCH-UP PAINT, GRIZZLY GREEN

⚠ WARNING

Safety labels help reduce the risk of serious injury caused by machine hazards. If any label comes off or becomes unreadable, the owner of this machine **MUST** replace it in the original location before resuming operations. For replacements, contact (800) 523-4777 or www.grizzly.com.

