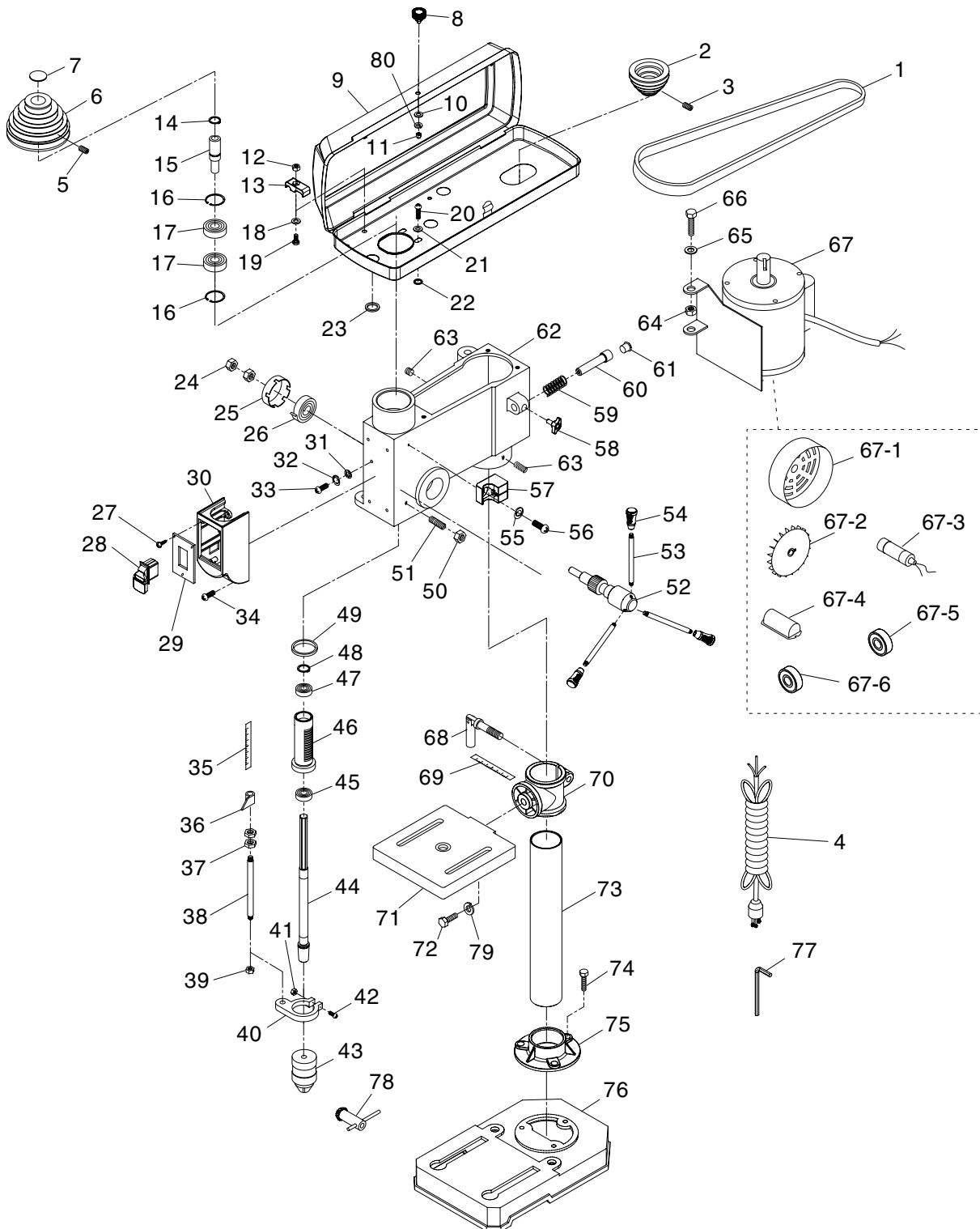


SECTION 9: PARTS

We do our best to stock replacement parts when possible, but we cannot guarantee that all parts shown are available for purchase. Call (800) 523-4777 or visit www.grizzly.com/parts to check for availability.

Main



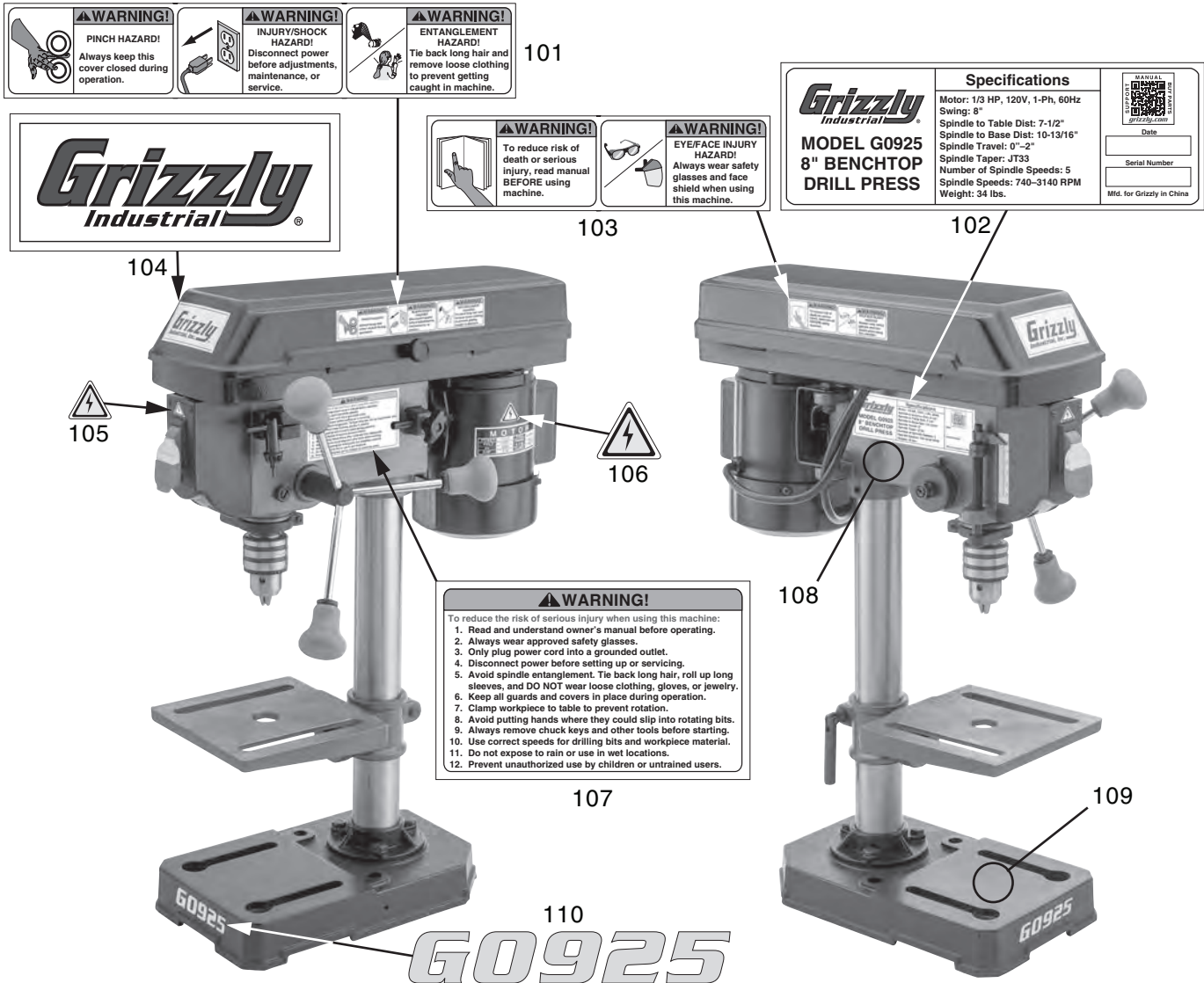
Main Parts List

REF	PART #	DESCRIPTION
1	P0925001	V-BELT M26 3L260
2	P0925002	MOTOR PULLEY
3	P0925003	SET SCREW M6-1 X 8
4	P0925004	POWER CORD 18G 3W 72" 5-15P
5	P0925005	SET SCREW M6-1 X 8
6	P0925006	SPINDLE PULLEY
7	P0925007	PULLEY CAP
8	P0925008	KNOB BOLT M5-.8 X 9, D20, ROUND KD
9	P0925009	BELT COVER
10	P0925010	FLAT WASHER 5MM
11	P0925011	ACORN NUT M5-.8
12	P0925012	HEX NUT M5-.8
13	P0925013	CORD CLAMP
14	P0925014	EXT RETAINING RING 21MM
15	P0925015	SPINDLE PULLEY SHAFT
16	P0925016	INT RETAINING RING 42MM
17	P0925017	BALL BEARING 6203ZZ
18	P0925018	FLAT WASHER 5MM
19	P0925019	PHLP HD SCR M5-.8 X 12
20	P0925020	PHLP HD SCR M6-1 X 8
21	P0925021	FLAT WASHER 6MM
22	P0925022	FLAT WASHER 9MM RUBBER
23	P0925023	GASKET 15 X 26 X 10MM
24	P0925024	HEX NUT M10-1.5
25	P0925025	RETURN SPRING COVER
26	P0925026	FLAT COIL SPRING
27	P0925027	TAP SCREW M3 X 10
28	P0925028	PADDLE SWITCH W/KEY DKLD AN17 20A 125V
29	P0925029	SWITCH PLATE
30	P0925030	SWITCH BOX
31	P0925031	BELLEVILLE LOCK WASHER 8MM
32	P0925032	LOCK WASHER 8MM
33	P0925033	PHLP HD SCR M5-.8 X 8
34	P0925034	PHLP HD SCR M5-.8 X 10
35	P0925035	DEPTH SCALE
36	P0925036	POINTER
37	P0925037	HEX NUT M10-1.5
38	P0925038	THREADED DEPTH ROD
39	P0925039	HEX NUT M6-1
40	P0925040	*DISCD*DEPTH STOP BRACKET
41	P0925041	HEX NUT M5-.8
42	P0925042	PHLP HD SCR M5-.8 X 25
43	P0925043	DRILL CHUCK JT33 X 1.5-13MM

REF	PART #	DESCRIPTION
44	P0925044	SPINDLE
45	P0925045	BALL BEARING 6201ZZ
46	P0925046	QUILL
47	P0925047	BALL BEARING 6201ZZ
48	P0925048	EXT RETAINING RING 12MM
49	P0925049	RUBBER SPACER 39 X 50 X 2
50	P0925050	HEX NUT M8-1.5
51	P0925051	SET SCREW M8-1.5 X 16 DOG-PT
52	P0925052	PINION GEAR
53	P0925053	LEVER SHAFT M8 X 1.25
54	P0925054	KNOB M8-1.25, D41
55	P0925055	FLAT WASHER 6MM
56	P0925056	PHLP HD SCR M6-1 X 6
57	P0925057	CHUCK KEY SEAT
58	P0925058	KNOB BOLT M8-1.25 X 12, D33, WING
59	P0925059	COMPRESSION SPRING 0.8 X 11 X 24
60	P0925060	BELT TENSION SHAFT
61	P0925061	BELT TENSION SHAFT CAP
62	P0925062	HEADSTOCK
63	P0925063	SET SCREW M8-1.25 X 8
64	P0925064	LOCK NUT M8-1
65	P0925065	FLAT WASHER 8MM
66	P0925066	HEX BOLT M8-1 X 25
67	P0925067	MOTOR 1/3HP 120V 1-PH
67-1	P0925067-1	MOTOR FAN COVER
67-2	P0925067-2	MOTOR FAN
67-3	P0925067-3	R CAPACITOR 22M 250V 5/16 X 2-1/2
67-4	P0925067-4	CAPACITOR COVER
67-5	P0925067-5	BALL BEARING 6202Z FRONT
67-6	P0925067-6	BALL BEARING 6201Z REAR
68	P0925068	FOLDING HANDLE 115L, M10-1.5 X 25
69	P0925069	TABLE TILT SCALE
70	P0925070	TABLE CLAMPING BRACKET
71	P0925071	TABLE
72	P0925072	HEX BOLT M12-1.75 X 30
73	P0925073	COLUMN
74	P0925074	HEX BOLT M8-1.25 X 20
75	P0925075	COLUMN SEAT
76	P0925076	BASE
77	P0925077	HEX WRENCH 4MM
78	P0925078	DRILL CHUCK KEY 3MM STD-SE 12T SD 13MM
79	P0925079	LOCK WASHER 12MM
80	P0925080	LOCK WASHER 5MM



Labels & Cosmetics



REF	PART #	DESCRIPTION
101	P0925101	PINCH/SHOCK/ENTANGLEMENT LABEL
102	P0925102	MACHINE ID LABEL
103	P0925103	READ MANUAL/PPE LABEL
104	P0925104	GRIZZLY LOGO LABEL
105	P0925105	ELECTRICITY LABEL - SMALL

REF	PART #	DESCRIPTION
106	P0925106	ELECTRICITY LABEL - LARGE
107	P0925107	MACHINE WARNING LABEL
108	P0925108	TOUCH-UP PAINT, GRIZZLY GREEN
109	P0925109	TOUCH-UP PAINT, GRIZZLY BLACK
110	P0925110	MODEL NUMBER LABEL

! WARNING

Safety labels help reduce the risk of serious injury caused by machine hazards. If any label comes off or becomes unreadable, the owner of this machine **MUST** replace it in the original location before resuming operations. For replacements, contact (800) 523-4777 or www.grizzly.com.

