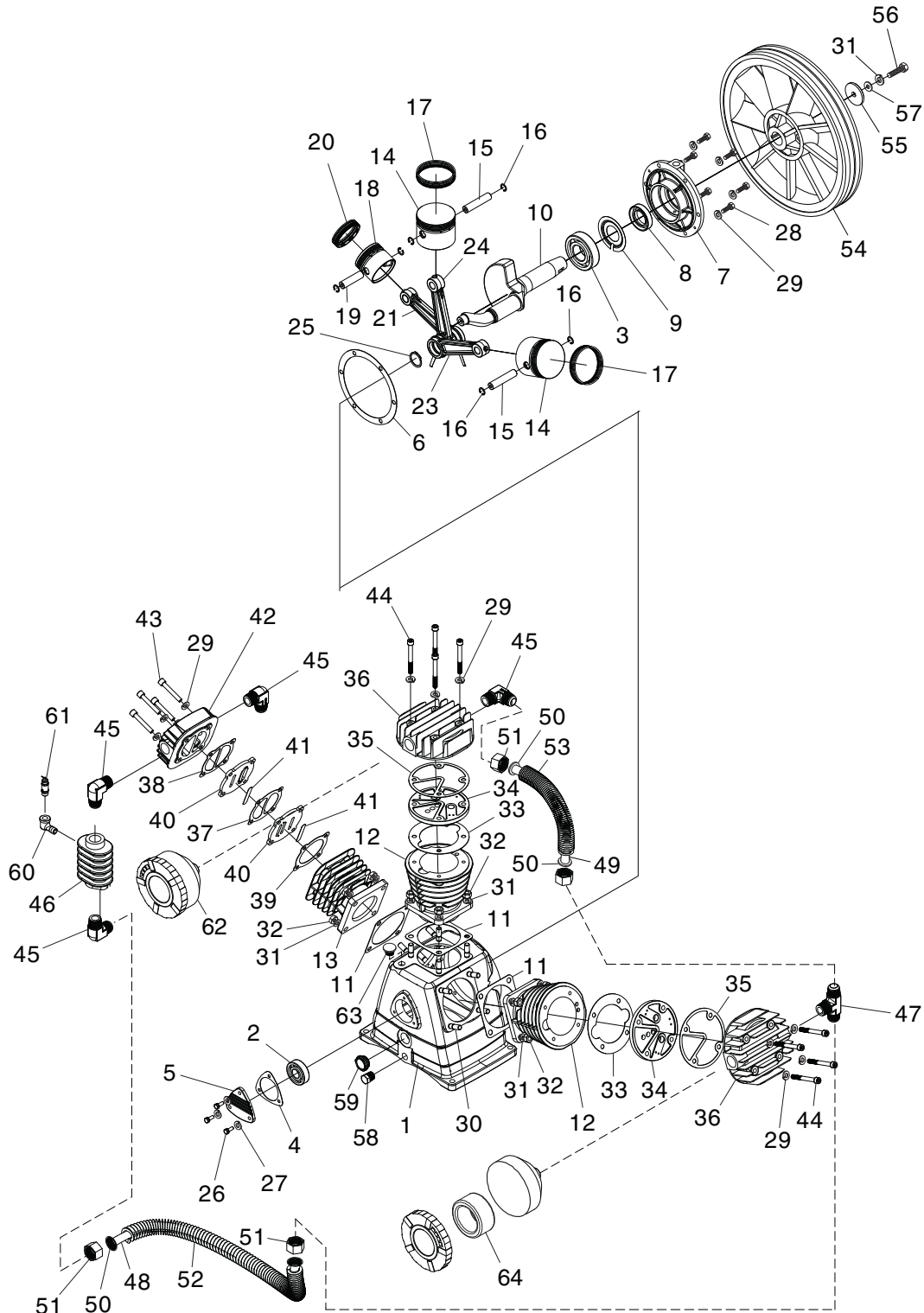


SECTION 9: PARTS

To order parts, contact MEGA by phone at (832) 415-6995 or email at CS@megacompressor.com.

G0942 Pump

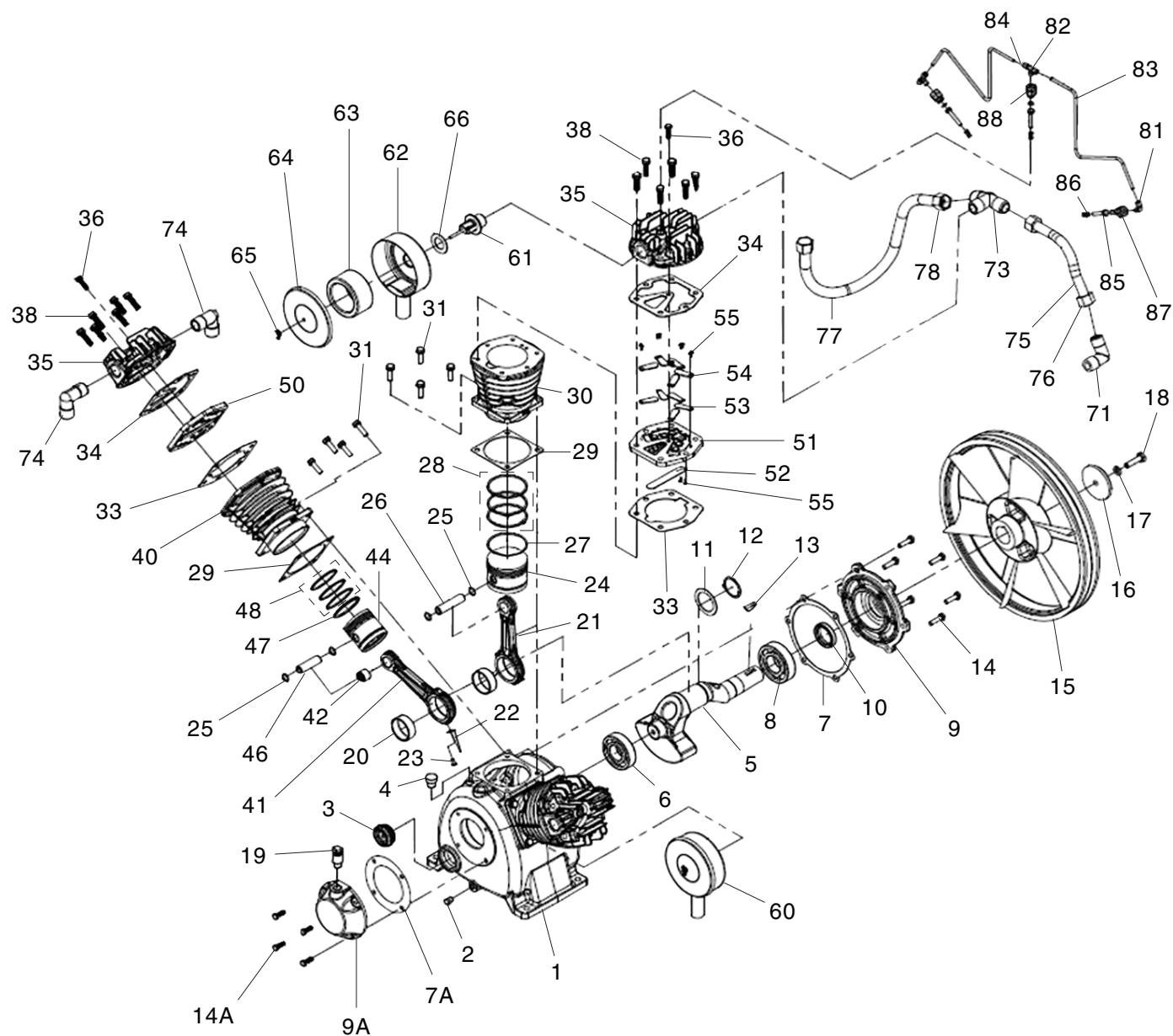


G0942 Pump Parts List

REF	DESCRIPTION	QTY	REF	DESCRIPTION	QTY
1	CRANKCASE	1	34	VALVE PLATE ASSEMBLY (STAGE 1)	2
2	BALL BEARING 6304-OPEN	1	35	CYLINDER HEAD GASKET (STAGE 1)	2
3	BALL BEARING 6307-OPEN	1	36	CYLINDER HEAD (STAGE 1)	2
4	BEARING COVER GASKET	1	37	VALVE PLATE GASKET (UPPER)	1
5	CRANKSHAFT BEARING COVER 4MM	1	38	CYLINDER HEAD GASKET (STAGE 1)	1
6	BEARING SEAT GASKET	1	39	VALVE PLATE GASKET (LOWER)	1
7	CRANKSHAFT BEARING SEAT	1	40	VALVE PLATE	2
8	OIL SEAL 35 X 56 X 12	1	41	REED VALVE	2
9	PLATE 79.5 X 36	1	42	CYLINDER HEAD (STAGE 2)	1
10	CRANKSHAFT	1	43	HEX BOLT M8-1.25 X 55	4
11	CYLINDER GASKET (LOWER)	3	44	HEX BOLT M8-1.25 X 75	8
12	CYLINDER (STAGE 1)	2	45	ELBOW FITTING 90-DEG R 3/4" G 3/4"	4
13	CYLINDER (STAGE 2)	1	46	INTERCOOLER	1
14	PISTON (STAGE 1)	2	47	TEE FITTING 180-DEG R 3/4" 2 X G 3/4"	1
15	PISTON PIN (STAGE 1)	2	48	EXHAUST COPPER PIPE (LONG)	1
16	INT RETAINING RING 15MM	6	49	EXHAUST COPPER PIPE (SHORT)	1
17	PISTON RING SET (STAGE 1) 3 PC	2	50	COPPER PIPE LINING	4
18	PISTON (STAGE 2)	1	51	EXHAUST NUT M27	4
19	PISTON PIN)STAGE 2)	1	52	COPPER PIPE FIN (LONG)	1
20	PISTON RING SET (STAGE 2) 3 PC	1	53	COPPER PIPE FIN (SHORT)	1
21	CONNECTING ROD (LEFT)	1	54	PUMP FLYWHEEL	1
23	CONNECTING ROD (RIGHT)	1	55	FLAT WASHER 10 X 52 X 5MM	1
24	CONNECTING ROD (CENTER)	1	56	HEX BOLT M10-1.5 X 40 LH	1
25	EXT RETAINING RING 30MM	1	57	FLAT WASHER 10MM	1
26	HEX BOLT M6-1 X 16	3	58	OIL DRAIN PLUG Z 3/8"	1
27	LOCK WASHER 6MM	3	59	OIL SIGHT GLASS G 3/4" ALUMINUM	1
28	HEX BOLT M8-1.25 X 25	6	60	ELBOW FITTING 90-DEG R 1/4"	1
29	LOCK WASHER 8MM	18	61	SAFETY RELIEF VALVE R 1/4"	1
30	STUD-SE M10-1.5 X 20, 15	12	62	AIR FILTER ASSEMBLY	2
31	LOCK WASHER 10MM	13	63	OIL FILL PLUG	1
32	HEX NUT M10-1.5	12	64	FILTER ELEMENT	1
33	CYLINDER GASKET (UPPER) (STAGE 1)	2			



G0943 Pump

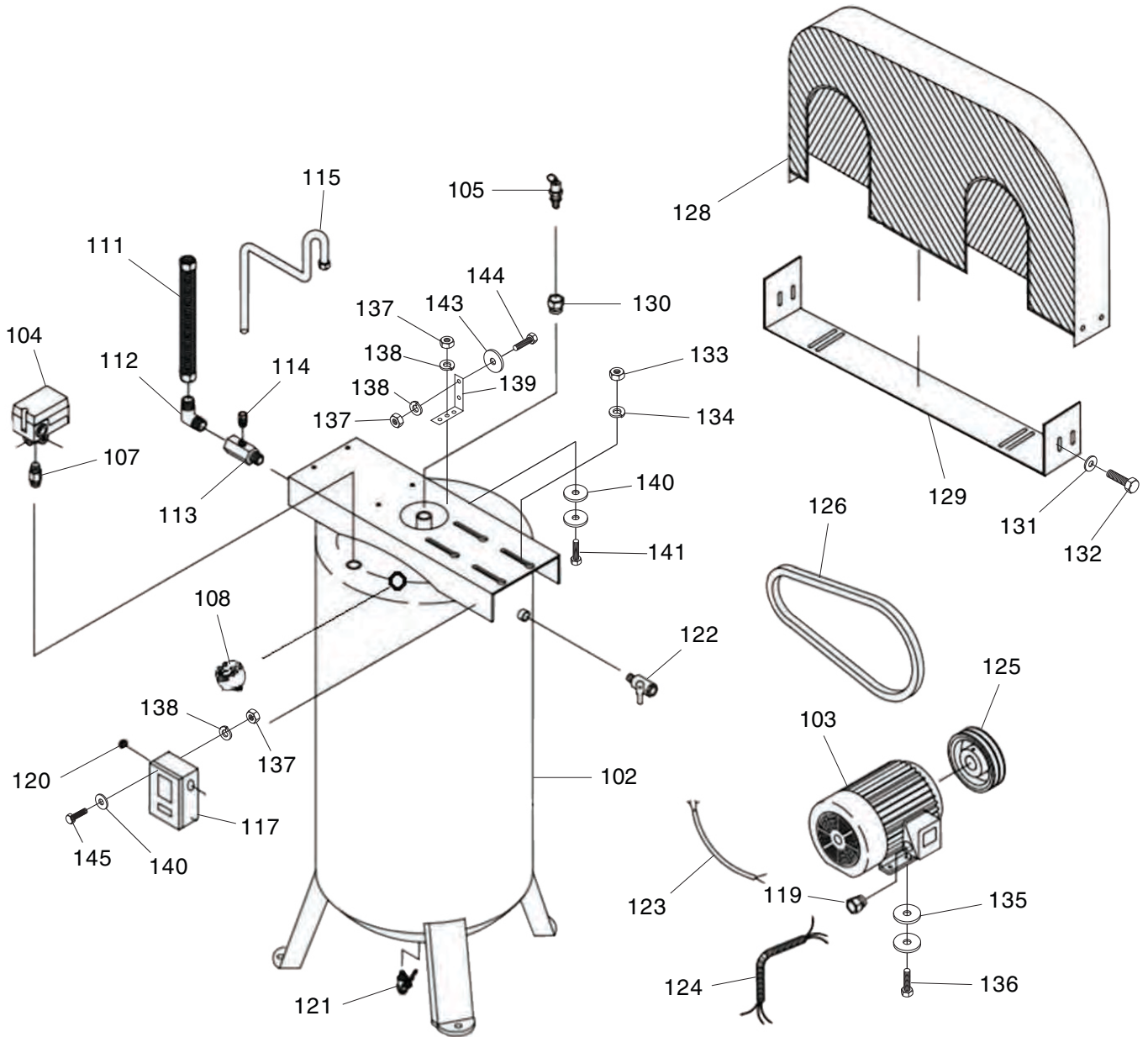


G0943 Pump Parts List

REF	DESCRIPTION	QTY	REF	DESCRIPTION	QTY
1	CRANKCASE	1	36	HEX BOLT M8-1.25 X 30	3
2	OIL DRAIN PLUG	1	38	HEX BOLT M10-1.5 X 45	18
3	OIL SIGHT GLASS	1	40	CYLINDER (STAGE 2)	1
4	OIL FILL PLUG	1	41	CONNECTING ROD (STAGE 2)	1
5	CRANKSHAFT	1	42	NEEDLE ROLLER BEARING NK 20/20	1
6	BALL BEARING 6308-OPEN	1	44	PISTON (STAGE 2)	1
7	BEARING SEAT GASKET	1	46	PISTON PIN (STAGE 2)	1
7A	BEARING COVER GASKET	1	47	COMPRESSOR OIL RING (STAGE 2)	1
8	BALL BEARING 6309-OPEN	1	48	PISTON RING SET (STAGE 2) 3 PC	3
9	CRANKSHAFT BEARING SEAT	1	50	VALVE SEAT ASSEMBLY (STAGE 2)	3
9A	CRANKSHAFT BEARING COVER	1	51	VALVE SEAT ASSEMBLY (STAGE 1)	3
10	OIL SEAL	1	52	INLET VALVE PLATE	3
11	FLAT WASHER 51 X 70 X 1.5MM	1	53	OUTLET VALVE PLATE (LOWER)	15
12	EXT RETAINING RING 50MM	1	54	OUTLET VALVE PLATE (UPPER)	15
13	WOODRUFF KEY 8 X 32MM	1	55	HEX BOLT M3-.5 X 13	36
14	HEX BOLT M10-1.5 X 25	6	60	AIR FILTER ASSEMBLY	2
14A	HEX BOLT M8-1.25 X 25	4	61	FILTER MOUNT	2
15	COMPRESSOR PULLEY	1	62	FILTER BASE	2
16	FLAT WASHER 12.5 X 75 X 7MM	1	63	FILTER	2
17	LOCK WASHER 12M	1	64	FILTER COVER	2
18	HEX BOLT M12-1.75 X 45	1	65	WING NUT M6-1	2
19	BREATHER CAP	1	66	FILTER GASKET	2
20	ROD INNER RING	3	71	ELBOW FITTING 90-DEG	1
21	CONNECTING ROD (STAGE 1)	2	73	TEE FITTING	1
22	OIL SPLASH PLATE	2	74	ELBOW FITTING 90-DEG	2
23	HEX BOLT M6-1 X 12	2	75	FIN PIPE ASSEMBLY (STAGE 1)	1
24	PISTON (FIRST STAGE)	2	76	STRAIGHT PIPE CONNECTOR PT 7/8"-14	2
25	INT RETAINING RING 20MM	6	77	FIN PIPE ASSEMBLY (STAGE 2)	1
26	PISTON PIN (FIRST STAGE)	2	78	STRAIGHT PIPE CONNECTOR PT 1"-11	2
27	COMPRESSOR OIL RING (STAGE 1)	2	81	ELBOW FITTING 90-DEG	1
28	PISTON RING SET (STAGE 1) 3 PC	6	82	TEE FITTING	2
29	CYLINDER GASKET (LOWER)	3	83	DISCHARGE PIPE	2
30	CYLINDER (STAGE 1)	2	84	STRAIGHT PIPE CONNECTOR PT 1/4"-19	5
31	HEX BOLT M10-1.5 X 30	12	85	UNLOADER VALVE	3
33	CYLINDER GASKET (UPPER)	3	86	UNLOADER VALVE SPRING	3
34	CYLINDER HEAD GASKET	3	87	OIL RING	3
35	CYLINDER HEAD	3	88	STRAIGHT FITTING	3



G0942 Tank & Motor



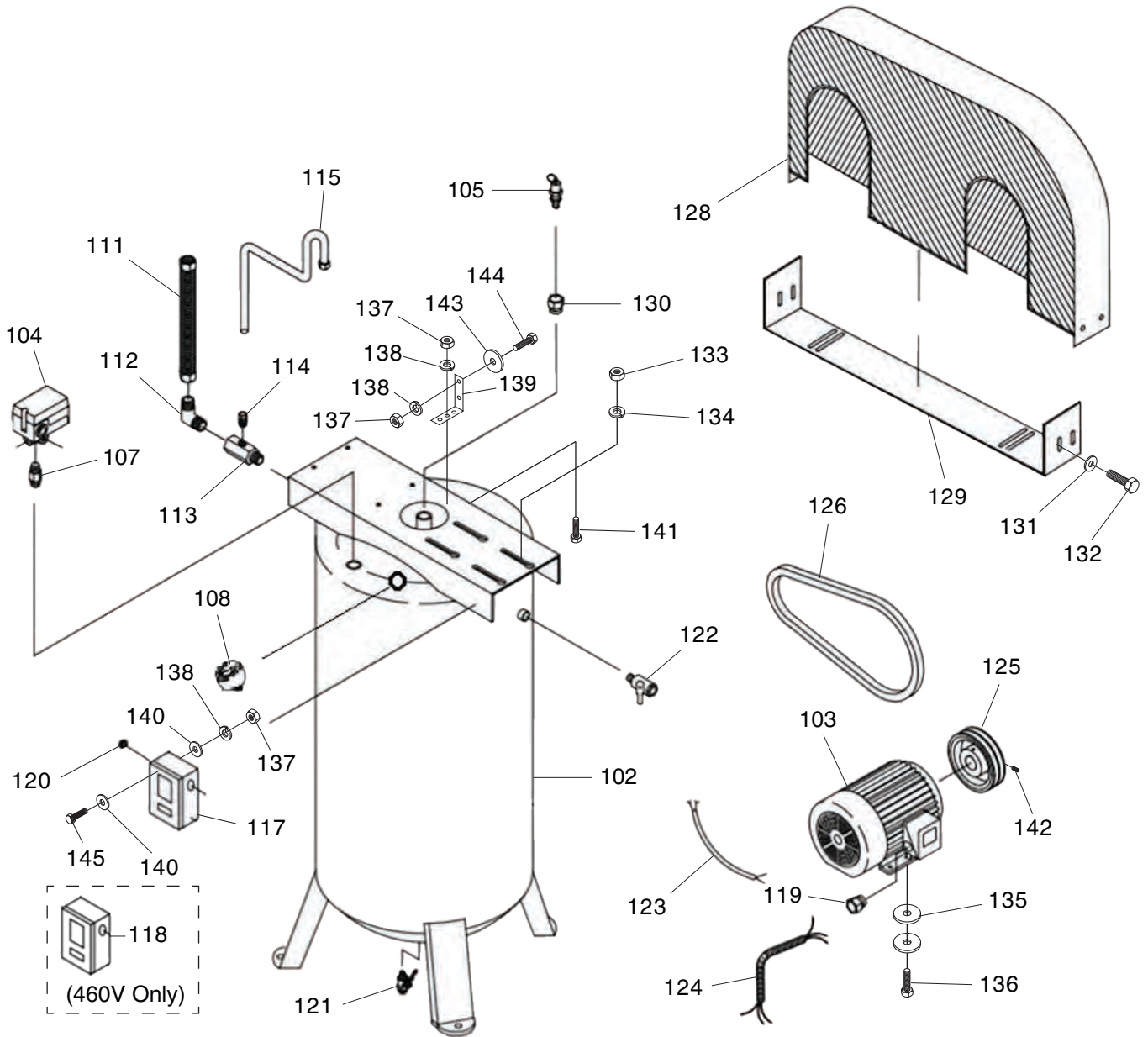
G0942 Tank & Motor Parts List

REF	DESCRIPTION	QTY
102	TANK	1
103	MOTOR 7.5HP 230V 1-PH	1
104	PRESSURE SWITCH SUNNY SP-204	1
105	SAFETY RELIEF VALVE	1
107	PIPE NIPPLE	1
108	PRESSURE GAUGE	1
111	PUMP DISCHARGE LINE	1
112	ELBOW FITTING 90-DEG	1
113	THREADED CHECK VALVE	1
114	DISCHARGE FITTING	1
115	DISCHARGE PIPE	1
117	MAG SWITCH EATON	1
119	STRAIN RELIEF TYPE-1 3/4"	1
120	CHECK VALVE 3/4"	1
121	BALL DRAIN VALVE	1
122	OUTLET VALVE	1
123	MAG SWITCH CORD 12G 3W 10"	1
124	MOTOR CORD 8G 3W 10"	1
125	MOTOR PULLEY ASSEMBLY	1

REF	DESCRIPTION	QTY
126	V-BELT B74	1
128	BELT GUARD	1
129	BELT GUARD MOUNTING BRACKET	1
130	REDUCING ADAPTER 3/4" X 1/4"	1
131	FLAT WASHER 8MM	4
132	HEX BOLT M8-1.25 X 16	4
133	HEX NUT M10-1.5	4
134	LOCK WASHER 10MM	4
135	FLAT WASHER 10.5 X 38.3 X 1.2MM	8
136	HEX BOLT M10-1.5 X 38	4
137	HEX NUT M8-1.25	4
138	LOCK WASHER 8MM	4
139	BELT GUARD MOUNTING BRACKET	1
140	FENDER WASHER 8MM	4
141	HEX BOLT M8-1.25 X 12	1
143	FLAT WASHER 8.2 X 38 X 1MM	1
144	HEX BOLT M8-1.25 X 8	1
145	HEX BOLT M8-1.25 X 30	2



G0943 Tank & Motor



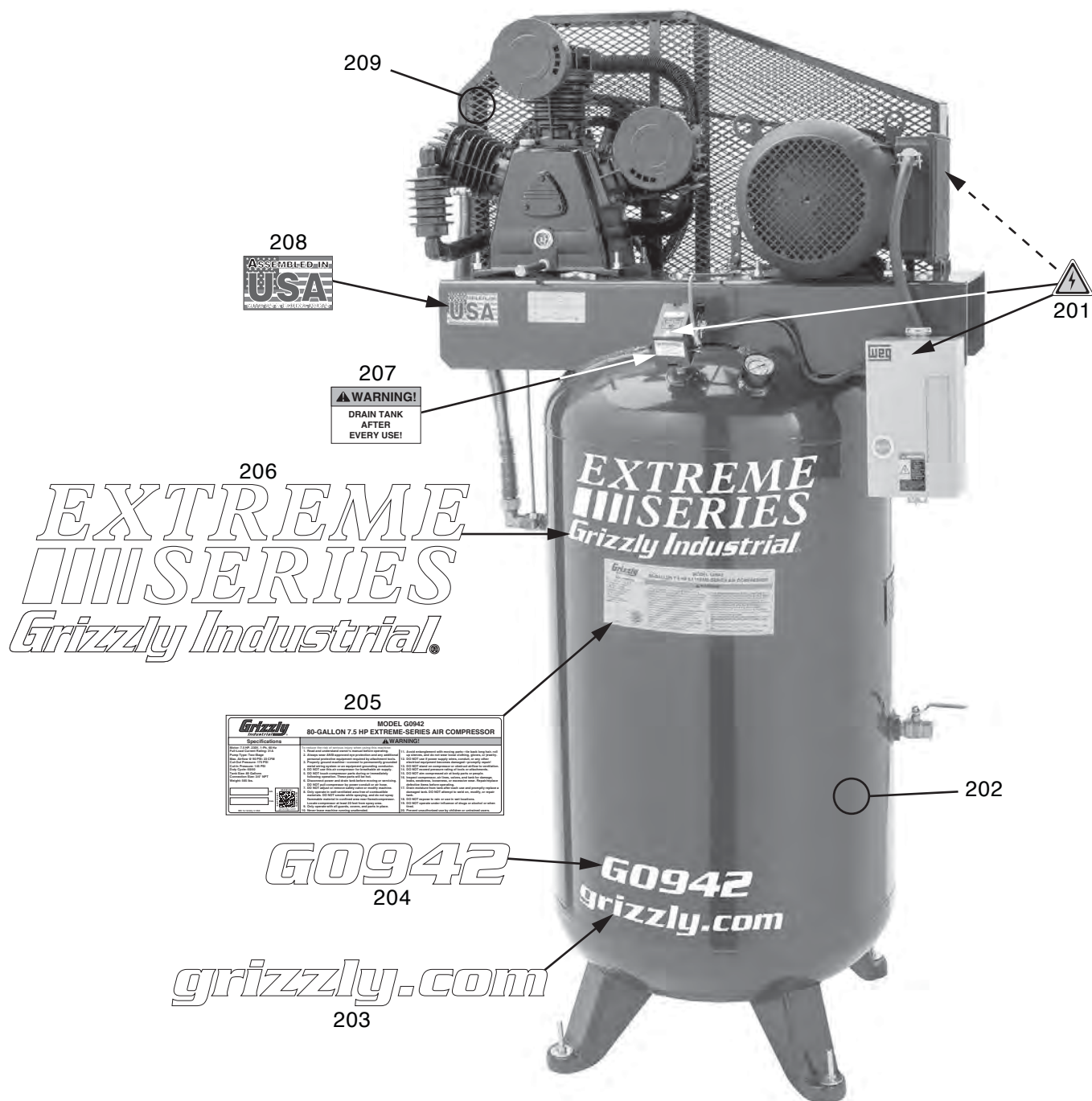
G0943 Tank & Motor Parts List

REF	DESCRIPTION	QTY
102	TANK	1
103	MOTOR 10HP 230V/460V 3-PH	1
104	PRESSURE SWITCH SQUARE D4 PORT	1
105	SAFETY RELIEF VALVE	1
107	PIPE NIPPLE	1
108	PRESSURE GAUGE	1
111	PUMP DISCHARGE LINE	1
112	ELBOW FITTING 90-DEG	1
113	THREADED CHECK VALVE	1
114	DISCHARGE FITTING	1
115	DISCHARGE PIPE	1
117	MAG SWITCH EATON 230V	1
118	MAG SWITCH EATON 460V	1
119	CONNECTOR 3/4"	1
120	CONNECTOR 3/8"	1
121	BALL DRAIN VALVE	1
122	OUTLET VALVE	1
123	MAG SWITCH CORD 12G 3W 12"	1
124	MOTOR CORD 8G 4W 12"	1
125	MOTOR PULLEY ASSEMBLY	1

REF	DESCRIPTION	QTY
126	V-BELT B90	1
128	BELT GUARD	1
129	BELT GUARD MOUNTING BRACKET	1
130	REDUCING ADAPTER 3/4" X 1/4"	1
131	FLAT WASHER 8MM	4
132	HEX BOLT M8-1.25 X 16	4
133	HEX NUT M10-1.5	4
134	LOCK WASHER 10MM	4
135	FLAT WASHER 10.5 X 38.3 X 1.2MM	8
136	HEX BOLT M10-1.5 X 38	4
137	HEX NUT M8-1.25	4
138	LOCK WASHER 8MM	4
139	BELT GUARD MOUNTING BRACKET	1
140	FENDER WASHER 8MM	4
141	HEX BOLT M8-1.25 X 12	1
142	SET SCREW 5/16-18 X 6	2
143	FLAT WASHER 8.2 X 38 X 1MM	1
144	HEX BOLT M8-1.25 X 8	1
145	HEX BOLT M8-1.25 X 30	2



G0942 Labels & Cosmetics

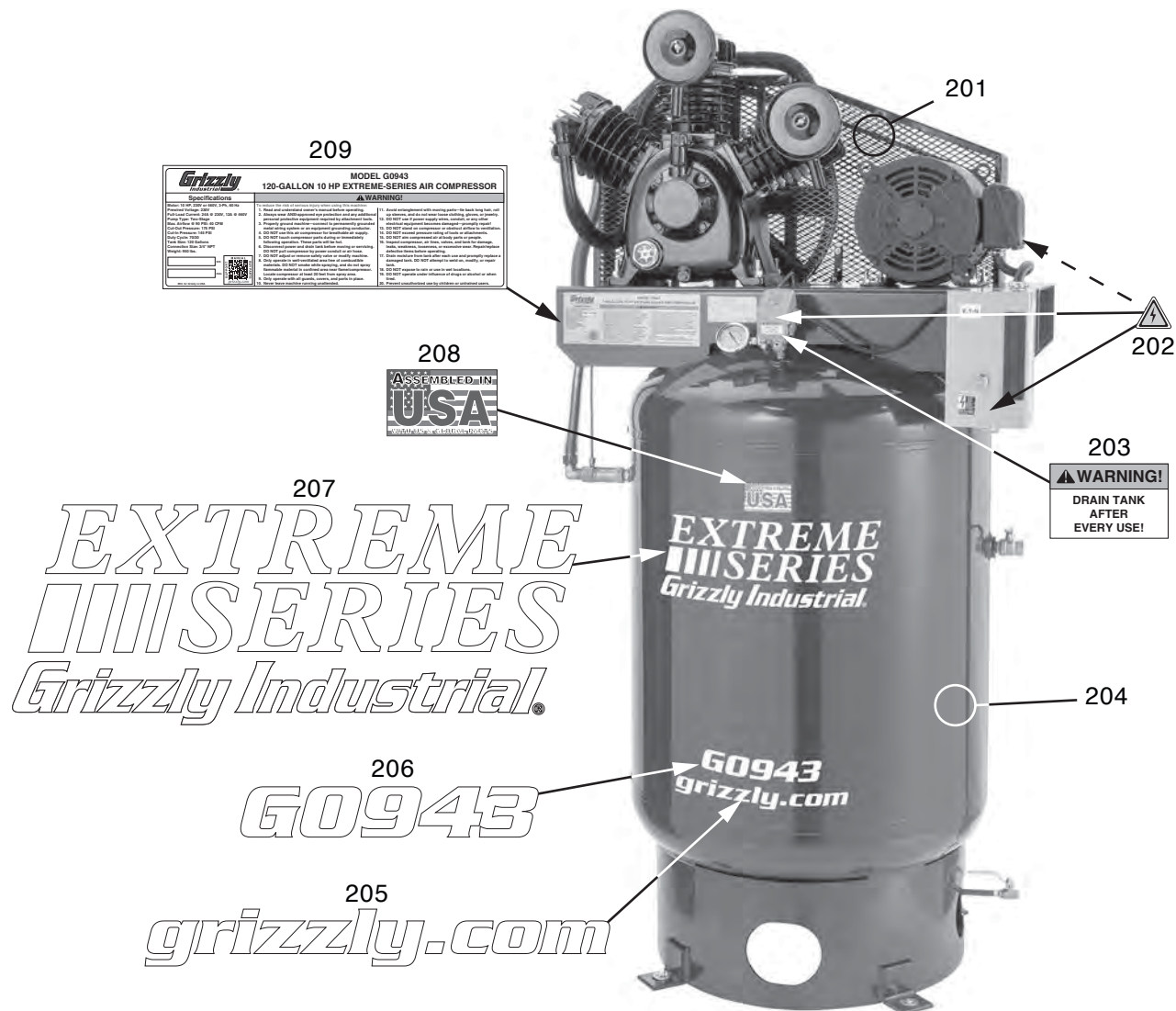


REF	PART #	DESCRIPTION
201	P0942201	ELECTRICITY LABEL
202	P0942202	TOUCH-UP PAINT, GRIZZLY GREEN
203	P0942203	GRIZZLY.COM LABEL
204	P0942204	MODEL NUMBER LABEL
205	P0942205	MACHINE ID LABEL

REF	PART #	DESCRIPTION
206	P0942206	EXTREME SERIES LABEL
207	P0942207	DRAIN TANK LABEL
208	P0942208	ASSEMBLED IN USA LABEL
209	P0942209	TOUCH-UP PAINT, GRIZZLY BLACK



G0943 Labels & Cosmetics



REF	PART #	DESCRIPTION
201	P0943201	TOUCH-UP PAINT, GRIZZLY BLACK
202	P0943202	ELECTRICITY LABEL
203	P0943203	DRAIN TANK LABEL
204	P0943204	TOUCH-UP PAINT, GRIZZLY GREEN
205	P0943205	GRIZZLY.COM LABEL

REF	PART #	DESCRIPTION
206	P0943206	MODEL NUMBER LABEL
207	P0943207	EXTREME SERIES LABEL
208	P0943208	ASSEMBLED IN USA LABEL
209	P0943209	MACHINE ID LABEL

! WARNING

Safety labels help reduce the risk of serious injury caused by machine hazards. If any label comes off or becomes unreadable, the owner of this machine **MUST replace it in the original location before resuming operations. For replacements, contact (800) 523-4777 or www.grizzly.com.**

