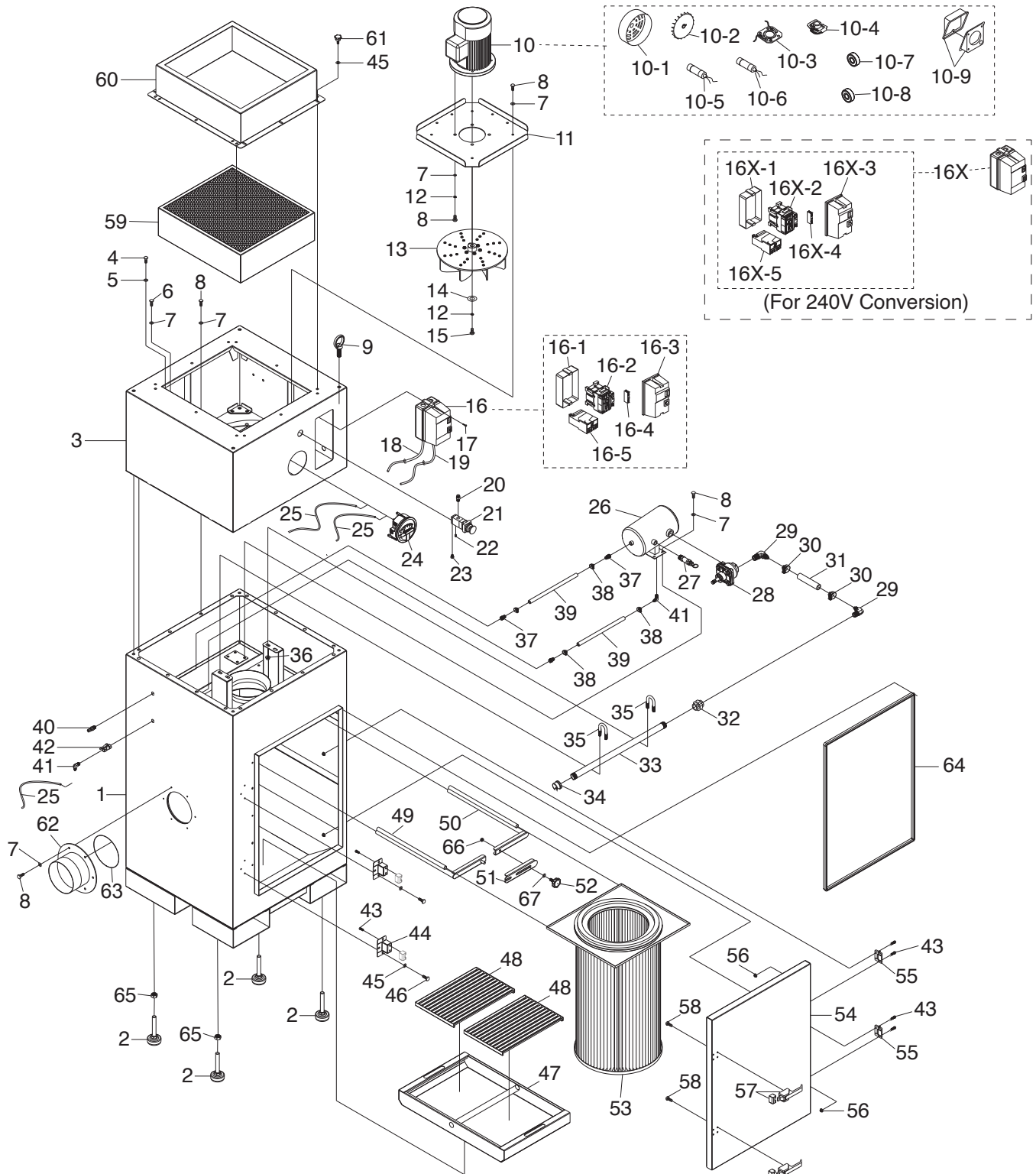


SECTION 10: PARTS

We do our best to stock replacement parts when possible, but we cannot guarantee that all parts shown are available for purchase. Call **(800) 523-4777** or visit **www.grizzly.com/parts** to check for availability.

Main



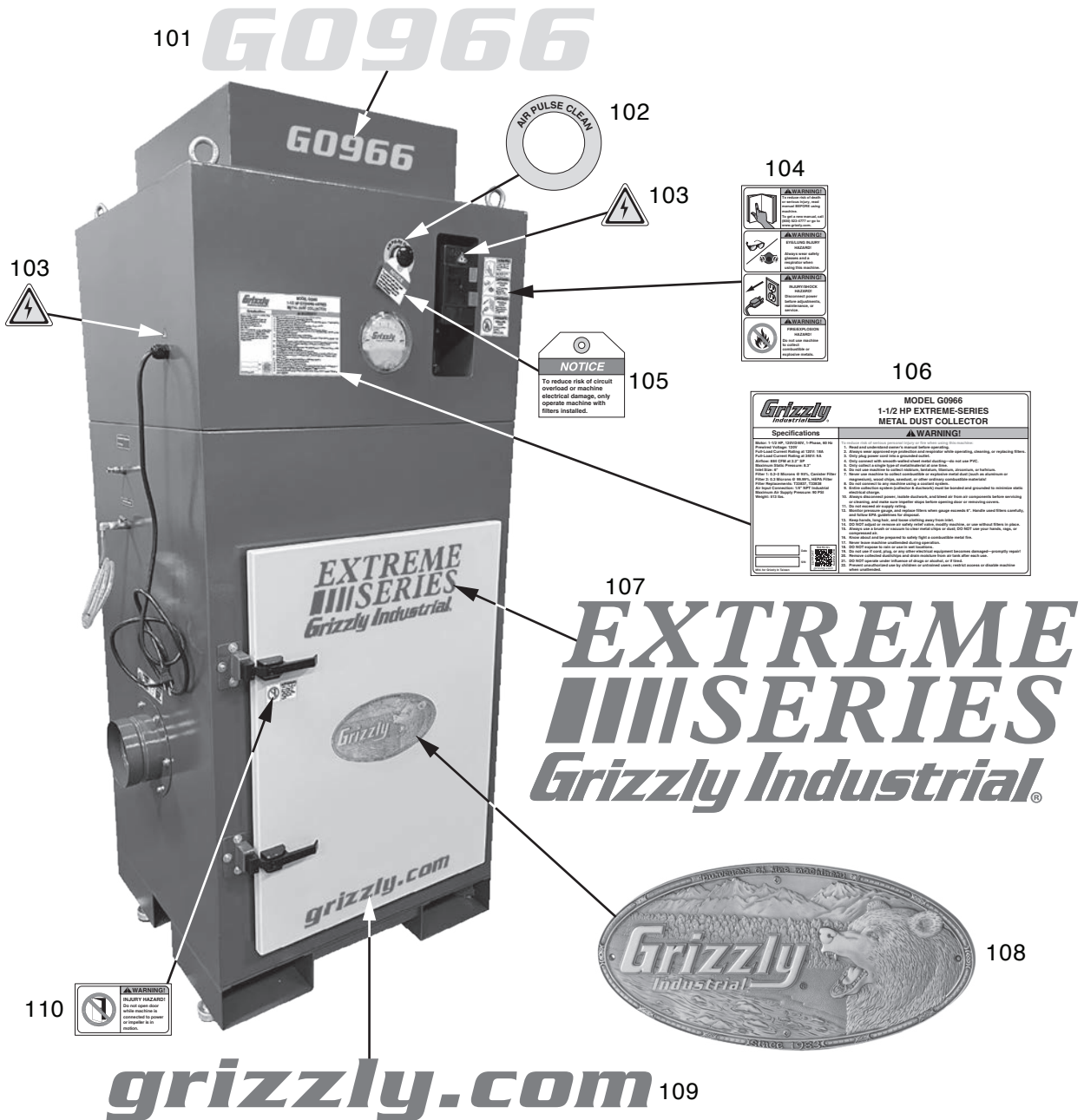
Main Parts List

REF	PART #	DESCRIPTION
1	P0966001	MACHINE BODY
2	P0966002	ADJUSTABLE FOOT M16-2 X 100
3	P0966003	MOTOR CHAMBER
4	P0966004	HEX BOLT 3/8-16 X 1-1/2
5	P0966005	FLAT WASHER 3/8
6	P0966006	HEX BOLT 5/16-18 X 1-1/2
7	P0966007	FLAT WASHER 5/16
8	P0966008	HEX BOLT 5/16-18 X 3/4
9	P0966009	EYE BOLT 30, M12-1.75 X 25
10	P0966010	MOTOR 1.5HP 120/240V 1-PH
10-1	P0966010-1	MOTOR FAN COVER
10-2	P0966010-2	MOTOR FAN
10-3	P0966010-3	CONTACT PLATE 19 X 70 INT
10-4	P0966010-4	CENTRIFUGAL SWITCH 9/16 3450
10-5	P0966010-5	S CAPACITOR 300M 125V 1-3/8 X 2-3/4
10-6	P0966010-6	R CAPACITOR 40M 250V 1-9/16 X 2-7/16
10-7	P0966010-7	BALL BEARING 6205ZZ (FRONT)
10-8	P0966010-8	BALL BEARING 6202ZZ (REAR)
10-9	P0966010-9	JUNCTION BOX
11	P0966011	IMPELLER COVER
12	P0966012	LOCK WASHER 5/16
13	P0966013	IMPELLER 12-1/2"
14	P0966014	FENDER WASHER 5/16
15	P0966015	HEX BOLT 5/16-18 X 1
16	P0966016	MAGNETIC SWITCH NHD MS1-18D2E7N212PBVO
16-1	P0966016-1	MAGNETIC SWITCH BOX
16-2	P0966016-2	CONTACTOR NHD C18D10E7 120V
16-3	P0966016-3	MAGNETIC SWITCH COVER
16-4	P0966016-4	AUX CONTACTOR NHD 1PS 1A 600V
16-5	P0966016-5	OL RELAY NHD NTH-21 2PE 17-21A
16X	P0966016X	MAGNETIC SWITCH NHD MS1-09D21N112PBVO
16X-1	P0966016X-1	MAGNETIC SWITCH BOX
16X-2	P0966016X-2	CONTACTOR NHD C-09D10I7 240V
16X-3	P0966016X-3	MAGNETIC SWITCH COVER
16X-4	P0966016X-4	AUX CONTACTOR NHD 1PS 1A 600V
16X-5	P0966016X-5	OL RELAY NHD NTH-11 2PE 8-11A
17	P0966017	PHLP HD SCR #10 X 5/8
18	P0966018	POWER CORD 3W 14G 118" 5-20P
19	P0966019	MOTOR CORD 3W 14G 59"
20	P0966020	COMPRESSION FITTING 1/4 NPT BRASS
21	P0966021	CONTROL VALVE SHAKO MSV9832-02NPBB
22	P0966022	SET SCREW 1/4-20 X 5/16
23	P0966023	SILENCER BREATHER VENT EP-02N
24	P0966024	PRESSURE GAUGE 0-10"

REF	PART #	DESCRIPTION
25	P0966025	PICKUP HOSE 3/16" X 5/16" X 59"
26	P0966026	AIR TANK
27	P0966027	SAFETY RELIEF VALVE 1/4 NPT 100PSI
28	P0966028	HIGH FLOW JET VALVE MG MGV-25
29	P0966029	HOSE FITTING 90 DEG BARBED 1PT
30	P0966030	HOSE CLAMP 1-1/4
31	P0966031	AIR HOSE 1" X 4"
32	P0966032	UNION 1PT
33	P0966033	PIPE 11-1/2 X 15.4 X 1
34	P0966034	CAP 11-1/2
35	P0966035	U-CLAMP 3/8-16 X 1-1/4, 1-3/8
36	P0966036	FLANGE NUT 3/8-16
37	P0966037	HOSE FITTING 1/4 PT BARBED STRAIGHT
38	P0966038	HOSE CLAMP 1/2
39	P0966039	HOSE 1/4" X 39"
40	P0966040	HOST FITTING 1/4 NPT (MALE)
41	P0966041	HOSE FITTING 1/4 PT 90 DEG BARBED
42	P0966042	DRAIN VALVE 1/4 PT BALL
43	P0966043	BUTTON HD CAP SCR M5-.8 X 12
44	P0966044	LATCH BRACKET
45	P0966045	FLAT WASHER 1/4
46	P0966046	HEX BOLT 1/4-20 X 3/4
47	P0966047	DUST TRAY
48	P0966048	SLOTTED TRAY INSERT
49	P0966049	FILTER SUPPORT (LEFT)
50	P0966050	FILTER SUPPORT (RIGHT)
51	P0966051	FILTER SUPPORT FIXING PLATE
52	P0966052	KNOB BOLT 5/16-18 X 1
53	P0966053	CANISTER FILTER 380 X 660 0.2-2 MICRONS
54	P0966054	MAINTENANCE DOOR
55	P0966055	HINGE
56	P0966056	FLANGE NUT M5-.8
57	P0966057	COMPRESSION LATCH ASSEMBLY
58	P0966058	FLAT HD SCR M5-.8 X 14
59	P0966059	FILTER HEPA 457 X 508 X 150 0.3 MICRONS
60	P0966060	HEPA FILTER CAGE
61	P0966061	KNOB BOLT 1/4-20 X 3/4
62	P0966062	DUST PORT 6"
63	P0966063	DUST PORT GASKET
64	P0966064	MAINTENANCE DOOR GASKET
65	P0966065	HEX NUT M16-2
66	P0966066	ACORN NUT 5/16-18
67	P0966067	FLAT WASHER 5/16



Labels & Cosmetics



REF	PART #	DESCRIPTION
101	P0966101	MODEL NUMBER LABEL
102	P0966102	AIR PULSE CLEAN LABEL
103	P0966103	ELECTRICITY LABEL
104	P0966104	COMBO WARNING LABEL
105	P0966105	HANG NOTICE LABEL

REF	PART #	DESCRIPTION
106	P0966106	MACHINE ID LABEL
107	P0966107	EXTREME SERIES LABEL
108	P0966108	GRIZZLY NAMEPLATE - LARGE
109	P0966109	GRIZZLY.COM LABEL
110	P0966110	KEEP DOOR CLOSED LABEL

⚠ WARNING

Safety labels help reduce the risk of serious injury caused by machine hazards. If any label comes off or becomes unreadable, the owner of this machine **MUST** replace it in the original location before resuming operations. For replacements, contact (800) 523-4777 or www.grizzly.com.

