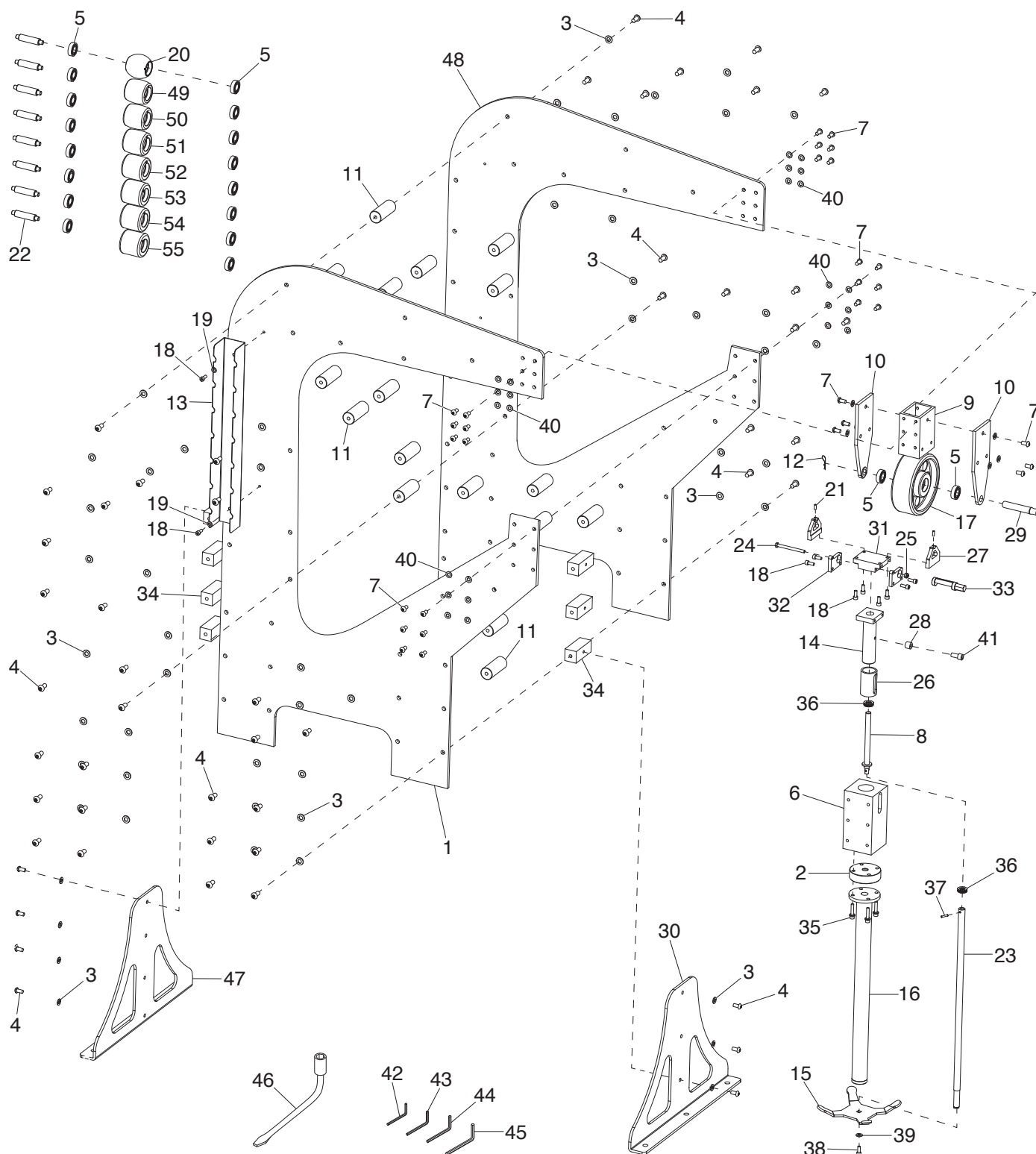


SECTION 7: PARTS

We do our best to stock replacement parts when possible, but we cannot guarantee that all parts shown are available for purchase. Call **(800) 523-4777** or visit **www.grizzly.com/parts** to check for availability.

Main



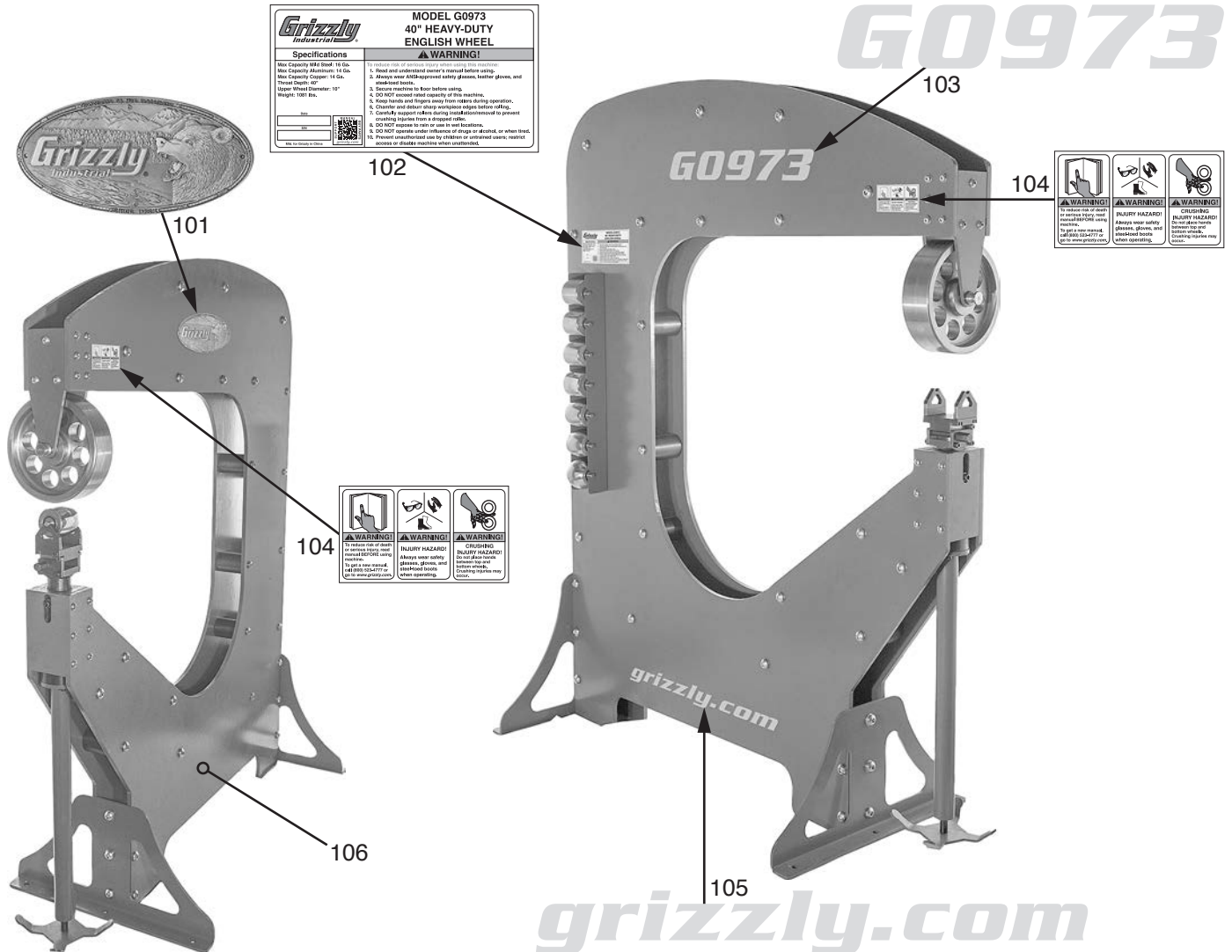
Main Parts List

| REF PART # | DESCRIPTION |
|------------|---|
| 1 | P0973001 LEFT FRAME |
| 2 | P0973002 ADJUSTMENT SHAFT PLATE |
| 3 | P0973003 FLAT WASHER 16MM |
| 4 | P0973004 BUTTON HD CAP SCR M16-2 X 30 |
| 5 | P0973005 BALL BEARING 6004ZZ |
| 6 | P0973006 SLIDE BLOCK |
| 7 | P0973007 BUTTON HD CAP SCR M10-1.5 X 25 |
| 8 | P0973008 LEADSCREW |
| 9 | P0973009 UPPER WHEEL BRACKET |
| 10 | P0973010 UPPER WHEEL PLATE |
| 11 | P0973011 FRAME SPACER |
| 12 | P0973012 COTTER PIN M3 X 64 HAIRPIN |
| 13 | P0973013 LOWER WHEEL STORAGE BRACKET |
| 14 | P0973014 GUIDE SHAFT |
| 15 | P0973015 FOOT WHEEL |
| 16 | P0973016 TUBE |
| 17 | P0973017 UPPER WHEEL, 10" FLAT |
| 18 | P0973018 CAP SCREW M8-1.25 X 20 |
| 19 | P0973019 FLAT WASHER 8MM |
| 20 | P0973020 LOWER WHEEL, DOMED 2" RADIUS |
| 21 | P0973021 SET SCREW M6-1 X 20 |
| 22 | P0973022 LOWER WHEEL AXLE |
| 23 | P0973023 ADJUSTMENT SHAFT |
| 24 | P0973024 SHOULDER SCREW M6-1 X 10, 8 X 80 |
| 25 | P0973025 LOCK NUT M6-1 |
| 26 | P0973026 BUSHING, COPPER |
| 27 | P0973027 WHEEL AXLE YOKE |
| 28 | P0973028 SPACER |

| REF PART # | DESCRIPTION |
|------------|---|
| 29 | P0973029 UPPER WHEEL AXLE |
| 30 | P0973030 FRONT SUPPORT LEG |
| 31 | P0973031 LOWER WHEEL BRACKET |
| 32 | P0973032 LOWER SIDE PLATE |
| 33 | P0973033 CAMBER ADJUSTMENT BOLT |
| 34 | P0973034 MOUNTING BLOCK |
| 35 | P0973035 CAP SCREW M8-1.25 X 50 |
| 36 | P0973036 THRUST BEARING 51103 |
| 37 | P0973037 DOWEL PIN 6 X 20 |
| 38 | P0973038 CAP SCREW M6-1 X 10 |
| 39 | P0973039 FLAT WASHER 6MM |
| 40 | P0973040 FLAT WASHER 10MM |
| 41 | P0973041 CAP SCREW M10-1.5 X 20 |
| 42 | P0973042 HEX WRENCH 3MM |
| 43 | P0973043 HEX WRENCH 5MM |
| 44 | P0973044 HEX WRENCH 6MM |
| 45 | P0973045 HEX WRENCH 8MM |
| 46 | P0973046 LUG NUT WRENCH, SLOTTED W/SOCKET |
| 47 | P0973047 REAR SUPPORT LEG |
| 48 | P0973048 RIGHT FRAME |
| 49 | P0973049 LOWER WHEEL, DOMED 4" RADIUS |
| 50 | P0973050 LOWER WHEEL, DOMED 6" RADIUS |
| 51 | P0973051 LOWER WHEEL, DOMED 8" RADIUS |
| 52 | P0973052 LOWER WHEEL, DOMED 12" RADIUS |
| 53 | P0973053 LOWER WHEEL, DOMED 24" RADIUS |
| 54 | P0973054 LOWER WHEEL, DOMED 36" RADIUS |
| 55 | P0973055 LOWER WHEEL, 3" FLAT |



Labels & Cosmetics



| REF | PART # | DESCRIPTION |
|-----|----------|---------------------------|
| 101 | P0973101 | GRIZZLY NAMEPLATE - LARGE |
| 102 | P0973102 | MACHINE ID LABEL |
| 103 | P0973103 | MODEL NUMBER LABEL |

| REF | PART # | DESCRIPTION |
|-----|----------|-------------------------------|
| 104 | P0973104 | COMBO WARNING LABEL |
| 105 | P0973105 | GRIZZLY.COM LABEL |
| 106 | P0973106 | TOUCH-UP PAINT, GRIZZLY GREEN |

WARNING

Safety labels help reduce the risk of serious injury caused by machine hazards. If any label comes off or becomes unreadable, the owner of this machine **MUST** replace it in the original location before resuming operations. For replacements, contact (800) 523-4777 or www.grizzly.com.

