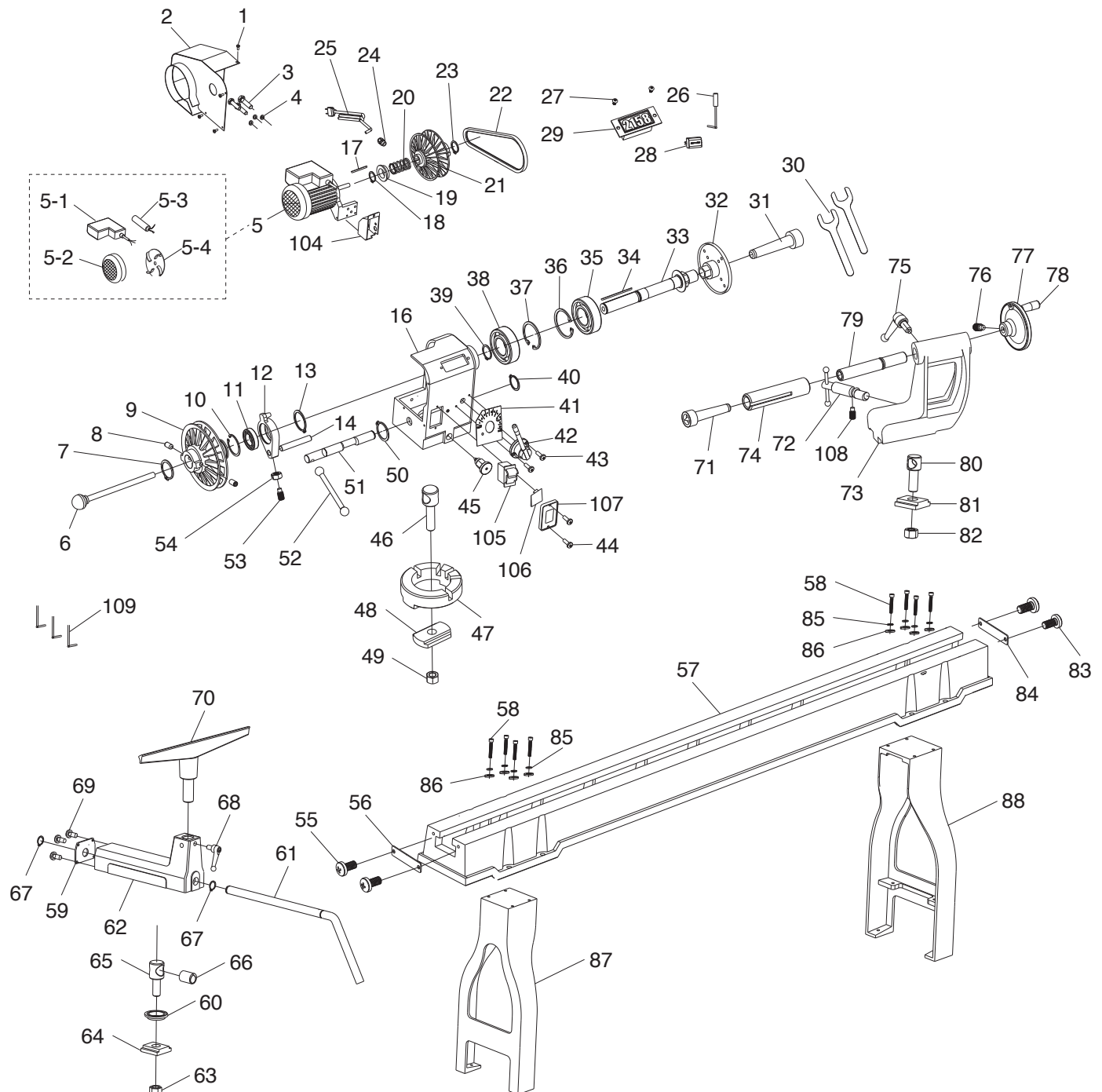


SECTION 9: PARTS

We do our best to stock replacement parts when possible, but we cannot guarantee that all parts shown are available for purchase. Call **(800) 523-4777** or visit **www.grizzly.com/parts** to check for availability.

Main



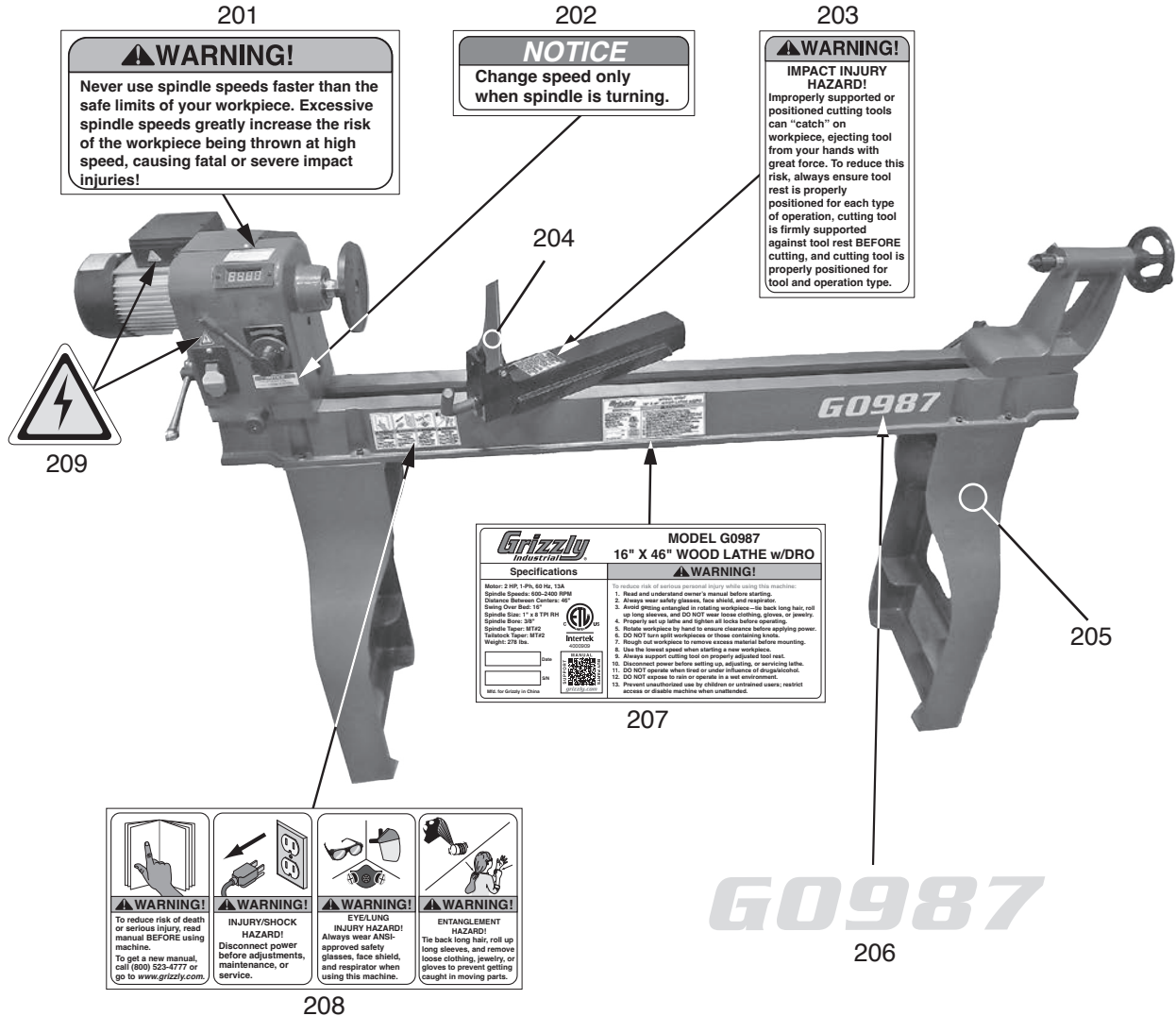
Main Parts List

REF	PART #	DESCRIPTION
1	P0987001	PHLP HD SCR M5-.8 X 8
2	P0987002	MOTOR COVER
3	P0987003	HEX BOLT M8-1.25 X 30
4	P0987004	LOCK WASHER 8MM
5	P0987005	MOTOR 2HP 120V 1-PH
5-1	P0987005-1	JUNCTION BOX
5-2	P0987005-2	MOTOR FAN COVER
5-3	P0987005-3	S CAPACITOR 100M 250V 2 X 3-3/4
5-4	P0987005-4	MOTOR FAN
6	P0987006	KNOCKOUT TOOL
7	P0987007	EXT RETAINING RING 24MM
8	P0987008	SET SCREW M6-1 X 10
9	P0987009	MOTOR PULLEY SET (2pcs)
10	P0987010	INT RETAINING RING 62MM
11	P0987011	BALL BEARING 6007-2RZ/Z3
12	P0987012	SHIFTING LEVER BRACKET
13	P0987013	EXT RETAINING RING 35MM
14	P0987014	RACK
16	P0987016	HEADSTOCK CASTING
17	P0987017	KEY 4 X 4 X 80 RE
18	P0987018	EXT RETAINING RING 16MM
19	P0987019	SPRING SEAT
20	P0987020	COMPRESSION SPRING 2.8 X 25.6 X 58
21	P0987021	SPINDLE PULLEY SET (2pcs)
22	P0987022	V-BELT M24.5 3L245, COGGED
23	P0987023	EXT RETAINING RING 16MM
24	P0987024	STRAIN RELIEF M20-1.5
25	P0987025	POWER CORD 16G 3W 108" 5-15P
26	P0987026	SENSOR
27	P0987027	PHLP HD SCR M4-.7 X 8
28	P0987028	LED DRIVER MEAN WELL APV-8-12
29	P0987029	DIGITAL READOUT
30	P0987030	FLAT WRENCH 32MM
31	P0987031	SPUR CENTER MT#2
32	P0987032	FACEPLATE
33	P0987033	SPINDLE 1" X 8 TPI
34	P0987034	KEY 4 X 4 X 80 RE
35	P0987035	BALL BEARING 6205-2RZ/Z3
36	P0987036	INT RETAINING RING 52MM
37	P0987037	INT RETAINING RING 52MM
38	P0987038	BALL BEARING 6205-2RZ/Z3
39	P0987039	EXT RETAINING RING 25MM
40	P0987040	EXT RETAINING RING 24MM
41	P0987041	SPEED CHANGE LABEL
42	P0987042	GEAR SHIFT ASSEMBLY
43	P0987043	PHLP HD SCR M5-.8 X 12
44	P0987044	PHLP HD SCR M4-.7 X 10
45	P0987045	HEADSTOCK PIVOT LOCK PIN
46	P0987046	HEADSTOCK CLAMP BOLT

REF	PART #	DESCRIPTION
47	P0987047	HEAD CLAMP BASE
48	P0987048	HEADSTOCK CLAMP PLATE
49	P0987049	HEX NUT M18-2.5
50	P0987050	EXT RETAINING RING 24MM
51	P0987051	HEADSTOCK ECCENTRIC SHAFT
52	P0987052	HEAD LOCK LEVER
53	P0987053	SET SCREW M8-1.25 X 25 DOG-PT
54	P0987054	HEX NUT M8-1.25
55	P0987055	PHLP HD SCR M5-.8 X 8
56	P0987056	BED END PLATE
57	P0987057	BED
58	P0987058	CAP SCREW M8-1.25 X 30
59	P0987059	SUPPORT PLATE
60	P0987060	SUPPORT BRACKET
61	P0987061	TOOL REST LOCK LEVER
62	P0987062	TOOL REST BASE 1"
63	P0987063	HEX NUT M18-2.5
64	P0987064	TOOL REST BASE CLAMP PLATE
65	P0987065	TOOL REST CLAMP BOLT
66	P0987066	TOOL REST BASE ECCENTRIC BUSHING
67	P0987067	EXT RETAINING RING 19MM
68	P0987068	ADJUSTABLE HANDLE M10-1.5 X 18
69	P0987069	PHLP HD SCR M4-.7 X 10
70	P0987070	TOOL REST 1"
71	P0987071	LIVE CENTER MT#2
72	P0987072	TAILSTOCK LOCK LEVER
73	P0987073	TAILSTOCK CASTING
74	P0987074	TAILSTOCK QUILL
75	P0987075	QUILL LOCK HANDLE M10-1.25 X 20
76	P0987076	SET SCREW M8-1.25 X 12 DOG-PT
77	P0987077	HANDWHEEL 15B X M8-1.25
78	P0987078	REVOLVING HANDLE M8-1.25 X 10
79	P0987079	LEADSCREW
80	P0987080	TAILSTOCK CLAMP BOLT
81	P0987081	TAILSTOCK CLAMP PLATE
82	P0987082	HEX NUT M18-2.5
83	P0987083	PHLP HD SCR M5-.8 X 8
84	P0987084	BED END PLATE
85	P0987085	LOCK WASHER 8MM
86	P0987086	FLAT WASHER 8MM
87	P0987087	STAND LEG (LEFT)
88	P0987088	STAND LEG (RIGHT)
104	P0987104	SWITCH BOX
105	P0987105	PADDLE SWITCH KEDU HY18-4P
106	P0987106	PADDLE SWITCH KEY
107	P0987107	SWITCH BOX PLATE
108	P0987108	SET SCREW M6-1 x 8
109	P0987109	HEX WRENCH SET 3MM, 4MM, 6MM



Labels & Cosmetics



REF	PART #	DESCRIPTION
201	P0987201	SPINDLE SPEED WARNING LABEL
202	P0987202	SPEED CHANGE NOTICE LABEL
203	P0987203	IMPACT INJURY HAZARD LABEL
204	P0987204	TOUCH-UP PAINT, BLACK
205	P0987205	TOUCH-UP PAINT, GRIZZLY GREEN

REF	PART #	DESCRIPTION
206	P0987206	MODEL NUMBER LABEL
207	P0987207	MACHINE ID LABEL
208	P0987208	COMBO WARNING LABEL
209	P0987209	ELECTRICITY LABEL 0.7W X 0.6H

⚠ WARNING

Safety labels help reduce the risk of serious injury caused by machine hazards. If any label comes off or becomes unreadable, the owner of this machine **MUST** replace it in the original location before resuming operations. For replacements, contact (800) 523-4777 or www.grizzly.com.

