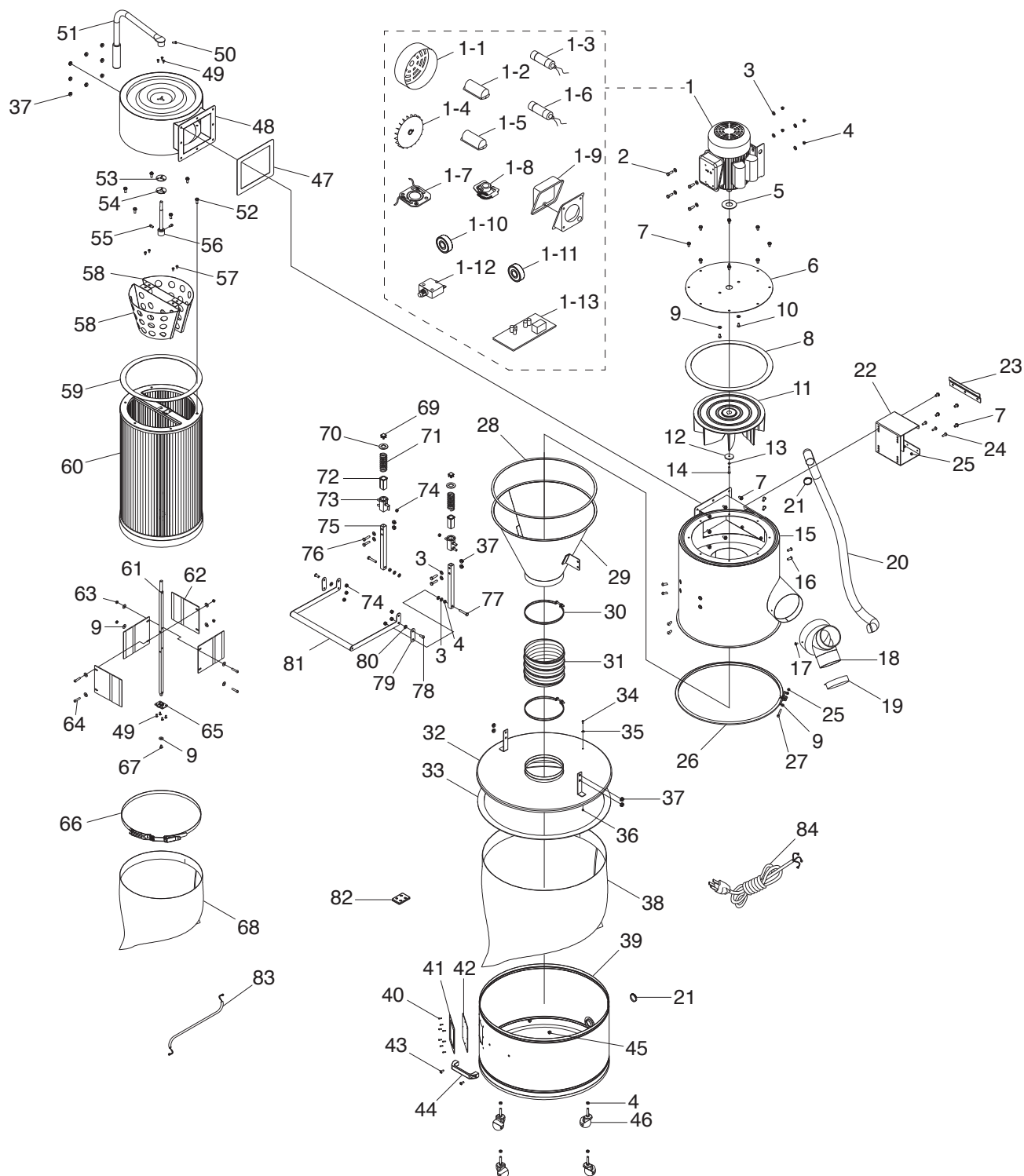


# SECTION 10: PARTS

We do our best to stock replacement parts when possible, but we cannot guarantee that all parts shown are available for purchase. Call **(800) 523-4777** or visit **[www.grizzly.com/parts](http://www.grizzly.com/parts)** to check for availability.

## Main



# Main Parts List

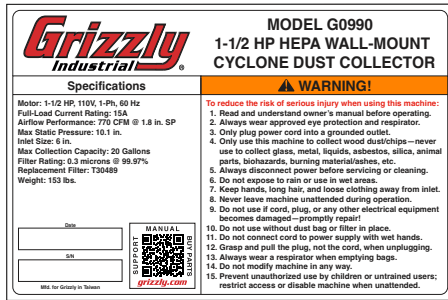
REF	PART #	DESCRIPTION
1	P0990001	MOTOR 1.5HP 110V 1-PH
1-1	P0990001-1	MOTOR FAN COVER
1-2	P0990001-2	R CAPACITOR COVER
1-3	P0990001-3	R CAPACITOR 50M 250V 1-5/8 X 2-3/8
1-4	P0990001-4	MOTOR FAN
1-5	P0990001-5	S CAPACITOR COVER
1-6	P0990001-6	S CAPACITOR 300M 125V 1-3/8 X 2-5/8
1-7	P0990001-7	CONTACT PLATE 1-3/4 X 2-3/4 INT
1-8	P0990001-8	CENTRIFUGAL SWITCH 5/8 1783
1-9	P0990001-9	MOTOR JUNCTION BOX
1-10	P0990001-10	BALL BEARING 6205-2RS
1-11	P0990001-11	BALL BEARING 6203-2RS
1-12	P0990001-12	CIRCUIT BREAKER 25A ZING EAR ZE-700
1-13	P0990001-13	CIRCUIT BOARD JY21108RSF-V02117
2	P0990002	HEX BOLT 5/16-18 X 1
3	P0990003	FLAT WASHER 5/16
4	P0990004	HEX NUT 5/16-18
5	P0990005	RUBBER GASKET 30 X 65 X 2MM
6	P0990006	MOTOR PLATE
7	P0990007	FLANGE BOLT 5/16-18 X 1/2
8	P0990008	FOAM GASKET 25MM X 1300MM
9	P0990009	FLAT WASHER 1/4
10	P0990010	HEX BOLT 1/4-20 X 1/2
11	P0990011	IMPELLER 12-3/4"
12	P0990012	IMPELLER WASHER 6 X 38 X 4MM
13	P0990013	LOCK WASHER 6MM
14	P0990014	CAP SCREW M6-1 X 30 LH
15	P0990015	IMPELLER HOUSING
16	P0990016	BUTTON HD CAP SCR 5/16-18 X 3/4
17	P0990017	PHLP HD SCR 10-24 X 3/8
18	P0990018	INLET ADAPTER 6" X 4"
19	P0990019	INLET ADAPTER CAP 4"
20	P0990020	VACUUM HOSE 1-1/2" X 60"
21	P0990021	HOSE CLAMP 1-3/4"
22	P0990022	IMPELLER HOUSING BRACKET
23	P0990023	WALL BRACKET
24	P0990024	T-BOLT 1/4-20 X 3/4
25	P0990025	HEX NUT 1/4-20
26	P0990026	BAND CLAMP
27	P0990027	HEX BOLT 1/4-20 X 2-1/2
28	P0990028	FOAM GASKET 10MM X 1550MM
29	P0990029	CYCLONE FUNNEL
30	P0990030	HOSE CLAMP 7-1/2"
31	P0990031	FLEX HOSE 7" X 5"
32	P0990032	COLLECTION DRUM LID
33	P0990033	FOAM GASKET 30MM X 1990MM
34	P0990034	PHLP HD SCR 10-24 X 3/8
35	P0990035	EXT TOOTH WASHER #10
36	P0990036	HEX NUT 10-24

REF	PART #	DESCRIPTION
37	P0990037	FLANGE NUT 5/16-18
38	P0990038	COLLECTION DRUM BAG 30" X 41"
39	P0990039	COLLECTION DRUM
40	P0990040	RIVET 2 X 4MM BLIND AL
41	P0990041	FOAM GASKET 120 X 140MM
42	P0990042	DRUM WINDOW 120 X 140MM ACRYLIC
43	P0990043	PHLP HD SCR 1/4-20 X 5/8
44	P0990044	COLLECTION DRUM HANDLE
45	P0990045	ACORN NUT 1/4-20
46	P0990046	CASTER 2", SWIVEL
47	P0990047	FOAM GASKET
48	P0990048	CANISTER FILTER COVER
49	P0990049	PHLP HD SCR M5-.8 X 12
50	P0990050	HEX BOLT M6-1 X 16
51	P0990051	FILTER CLEANING HANDLE
52	P0990052	FLANGE BOLT 5/16-18 X 3/4
53	P0990053	RUBBER GASKET
54	P0990054	PADDLE HANDLE SPINDLE RETAINER
55	P0990055	CAP SCREW M6-1 X 16
56	P0990056	PADDLE HANDLE SPINDLE
57	P0990057	PHLP HD SCR M5-.8 X 10
58	P0990058	SOUND DAMPENING WEDGE
59	P0990059	FOAM GASKET 30MM X 1240MM
60	P0990060	CANISTER FILTER
61	P0990061	FILTER PADDLE SPINDLE
62	P0990062	FILTER PADDLE
63	P0990063	LOCK NUT 1/4-20
64	P0990064	PHLP HD SCR 1/4-20 X 1-1/4"
65	P0990065	FILTER PADDLE SPINDLE PLATE
66	P0990066	BAG CLAMP 15"
67	P0990067	PHLP HD SCR M6-1 X 10
68	P0990068	FILTER BAG 20" X 23"
69	P0990069	PIPE PLUG SLEEVE CAP
70	P0990070	SPRING RETAINER
71	P0990071	COMPRESSION SPRING 3 X 32 X 85MM
72	P0990072	COPPER SLEEVE
73	P0990073	SPRING BRACKET
74	P0990074	LOCK NUT 5/16-18
75	P0990075	LOCK HANDLE GUIDE
76	P0990076	HEX BOLT 5/16-18 X 1-1/4
77	P0990077	HEX BOLT 5/16-18 X 1-3/4
78	P0990078	BUTTON HD CAP SCR 5/16-18 X 3/4
79	P0990079	LOCK HANDLE LINK
80	P0990080	FLAT WASHER 3/8 PLASTIC
81	P0990081	COLLECTION DRUM LOCK HANDLE
82	P0990082	REMOTE CONTROL
83	P0990083	GROUND WIRE 18G 18"
84	P0990084	POWER CORD 14G 3W 72" 5-15P



# Labels and Cosmetics

101



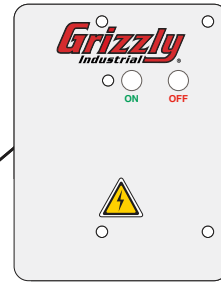
102



103



104



105



106



107

G0990

111

HEPA

112

110

109

grizzly.com

108

REF	PART #	DESCRIPTION
101	P0990101	MACHINE ID LABEL
102	P0990102	DISCONNECT POWER LABEL
103	P0990103	ELECTRICITY LABEL
104	P0990104	CONTROL PANEL LABEL
105	P0990105	RESPIRATOR & GLASSES LABEL
106	P0990106	READ MANUAL LABEL

REF	PART #	DESCRIPTION
107	P0990107	MODEL NUMBER LABEL
108	P0990108	TOUCH-UP PAINT, POLAR BEAR WHITE
109	P0990109	GRIZZLY.COM LABEL
110	P0990110	TOUCH-UP PAINT, GRIZZLY GREEN
111	P0990111	HEPA LABEL
112	P0990112	TOUCH-UP PAINT, GLOSSY BLACK

## ⚠ WARNING

Safety labels help reduce the risk of serious injury caused by machine hazards. If any label comes off or becomes unreadable, the owner of this machine **MUST** replace it in the original location before resuming operations. For replacements, contact (800) 523-4777 or [www.grizzly.com](http://www.grizzly.com).

