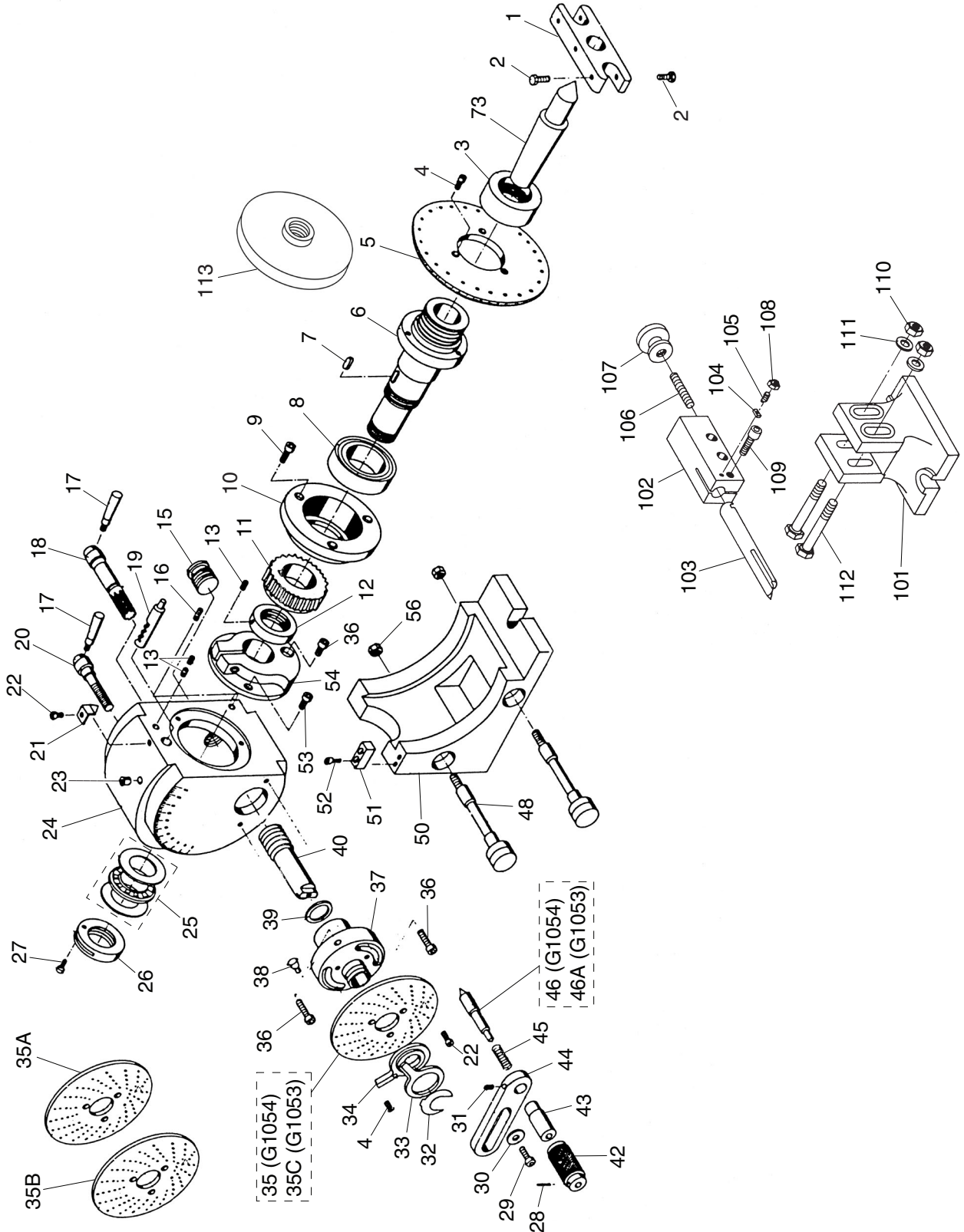


SECTION 6: PARTS

G1053/G1054 Main Breakdown



G1053 Parts List

REF	PART #	DESCRIPTION
1	P1053001	CENTER DOG
2	PB03M	HEX BOLT M8-1.25 X 16
3	P1053003	TAPERED BUSHING
4	PFH19M	FLAT HD SCR M4-.7 X 10
5	P1053005	DIRECT INDEXING PLATE
6	P1053006	SPINDLE
7	PK08M	KEY 5 X 5 X 16
8	P32007	TAPERED BEARING 32007
9	PCAP23M	CAP SCREW M4-.7 X 12
10	P1053010	FRONT BEARING SEAT
11	P1053011	WORM GEAR
12	P1053012	RETAINING NUT M30-1.5
13	PSS34M	SET SCREW M5-.8 X 16
15	P1053015	PLUG
16	PSS34M	SET SCREW M5-.8 X 16
17	P1053017	HANDLE
18	P1053018	GEARED HANDLE SHAFT
19	P1053019	GEARED INDEXING PIN
20	P1053020	LOCK SHAFT
21	P1053021	POINTER
22	PS09M	PHLP HD SCR M5-.8 X 10
23	P1053023	OIL FITTING 1/4"
24	P1053024	MAIN CASTING
25	P1053025	NEEDLE THRUST BEARING 25X42X4
26	P1053026	SPLIT RETAINING NUT M25-1.5
27	PCAP18M	CAP SCREW M4-.7 X 8
28	PRP02	ROLL PIN 1/8 X 3/4
29	PCAP26M	CAP SCREW M6-1 X 12
30	PW03M	FLAT WASHER 6MM
31	PSS07M	SET SCREW M5-.8 X 5
32	P1053032	RETAINING CLIP
33	P1053033	FRONT SECTOR ARM
34	P1053034	REAR SECTOR ARM
35A	P1053035A	DIVIDING PLATE 15-20 HOLE

REF	PART #	DESCRIPTION
35B	P1053035B	DIVIDING PLATE 21-33 HOLE
35C	P1053035C	DIVIDING PLATE 37-49 HOLE
36	PCAP24M	CAP SCREW M5-.8 X 16
37	P1053037	MOUNTING BRACKET
38	P1053038	OIL FITTING
39	P1053039	SPACER
40	P1053040	WORM SHAFT GEAR
42	P1053046	OUTER HANDLE
43	P1053046	INNER HANDLE
44	P1053044	HANDLE BRACKET
45	P1053046	COMPRESSION SPRING
46A	P1053046A	INDEX NEEDLE W/42, 43, 44, 45
48	P1053048	THREADED CLAMP SHAFT
50	P1053050	BASE
51	P1053051	SCALE INDEX
52	PCAP16M	CAP SCREW M4-.7 X 16
53	PCAP33M	CAP SCREW M5-.8 X 12
54	P1053054	LASHING RING
56	PN31M	HEX NUT M12-1.5
73	P1053073	DEAD CENTER B&S#7
101	P1053101	TAILSTOCK BASE
102	P1053102	CENTER BASE
103	P1053103	TAILSTOCK CENTER
104	PK06M	KEY 5 X 5 X 10
105	PSS11M	ECCENTRIC SET SCREW M6-1 X 16
106	P1053106	THREADED SHAFT
107	P1053107	KNURLED KNOB
108	PN01M	HEX NUT M6-1
109	PCAP72M	CAP SCREW M10-1.5 X 30
110	PN02M	HEX NUT M10-1.5
111	PW04M	FLAT WASHER 10MM
112	PB13M	HEX BOLT M10-1.5 X 80
113	P1053113	CHUCK BACKING PLATE



G1054 Parts List

REF	PART #	DESCRIPTION
1	P1054001	CENTER DOG
2	PCAP24M	CAP SCREW M5-.8 X 16
3	P1054003	TAPERED BUSHING
4	PFH19M	FLAT HD SCR M4-.7 X 10
5	P1054005	DIRECT INDEXING PLATE
6	P1054006	SPINDLE
7	PK08M	KEY 5 X 5 X 16
8	P1054008	TAPERED BEARING 32009
9	PCAP33M	CAP SCREW M5-.8 X 12
10	P1054010	FRONT BEARING SEAT
11	P1054011	WORM GEAR
12	P1054012	RETAINING NUT M38-1.5
13	PSS34M	SET SCREW M5-.8 X 16
15	P1054015	PLUG
16	PSS34M	SET SCREW M5-.8 X 16
17	P1054017	HANDLE
18	P1054018	GEARED HANDLE SHAFT
19	P1054019	GEARED INDEXING PIN
20	P1054020	LOCK SHAFT
21	P1054021	POINTER
22	PS09M	PHLP HD SCR M5-.8 X 10
23	P1054023	OIL FITTING 1/4"
24	P1054024	MAIN CASTING
25	P1054025	NEEDLE THRUST BEARING 30X47X4
26	P1054026	SPLIT RETAINING NUT M30-1.5
27	PS07M	PHLP HD SCR M4-.7 X 8
28	PRP02	ROLL PIN 1/8 X 3/4
29	PCAP33M	CAP SCREW M5-.8 X 12
30	PW02M	FLAT WASHER 5MM
31	PSS07M	SET SCREW M5-.8 X 5
32	P1054032	RETAINING CLIP
33	P1054033	FRONT SECTOR ARM
34	P1053034	REAR SECTOR ARM
35	P1054035	DIVIDING PLATE 37-49

REF	PART #	DESCRIPTION
35A	P1054035A	DIVIDING PLATE 15-20
35B	P1054035B	DIVIDING PLATE 21-33
36	PCAP15M	CAP SCREW M5-.8 X 20
37	P1054037	MOUNTING BRACKET
38	P1054038	OIL FITTING
39	P1054039	SPACER
40	P1054040	WORM SHAFT GEAR
42	P1054042	OUTER HANDLE
43	P1054043	INNER HANDLE
44	P1054044	HANDLE BRACKET
45	P1054045	COMPRESSION SPRING 10X12X45
46	P1054046	INDEX NEEDLE
48	P1054048	THREADED CLAMP SHAFT
50	P1054050	BASE
51	P1054051	SCALE INDEX
52	PCAP16M	CAP SCREW M4-.7 X 16
53	PCAP33M	CAP SCREW M5-.8 X 12
54	P1054054	LASHING RING
56	PN09M	HEX NUT M12-1.75
73	P1054073	DEAD CENTER B&S#9
101	P1054101	TAILSTOCK BASE
102	P1054102	CENTER BASE
103	P1054103	TAILSTOCK CENTER
104	P1054104	SPECIAL KEY 3/16 X 3/16 X 3/8
105	P1054105	ECCENTRIC SET SCREW M6-1 X 16
106	P1054106	THREADED SHAFT
107	P1054107	KNURLED KNOB
108	PN01M	HEX NUT M6-1
109	PCAP72M	CAP SCREW M10-1.5 X 30
110	PN02M	HEX NUT M10-1.5
111	PW04M	FLAT WASHER 10MM
112	PB13M	HEX BOLT M10-1.5 X 80
113	P1054113	CHUCK BACKING PLATE

