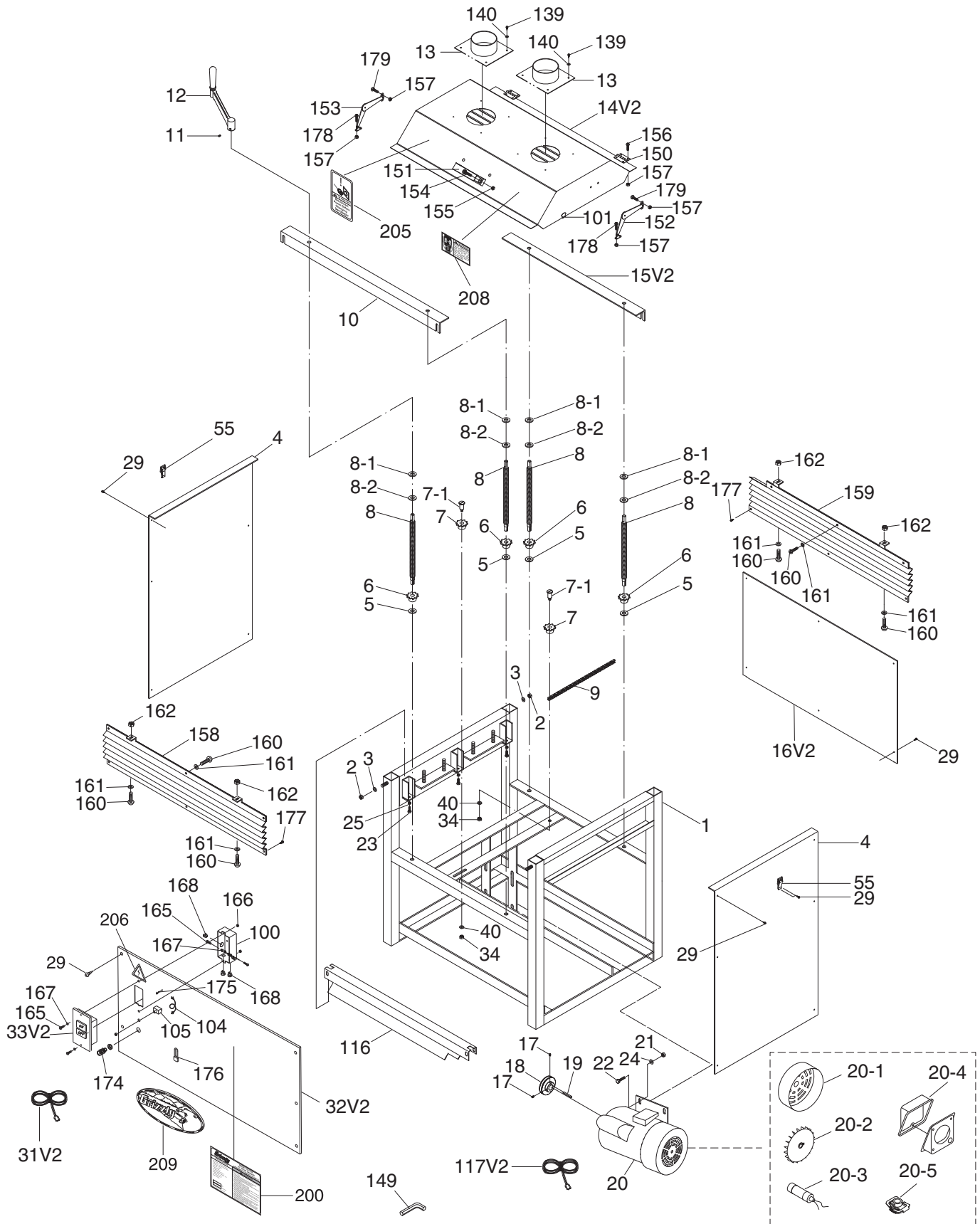
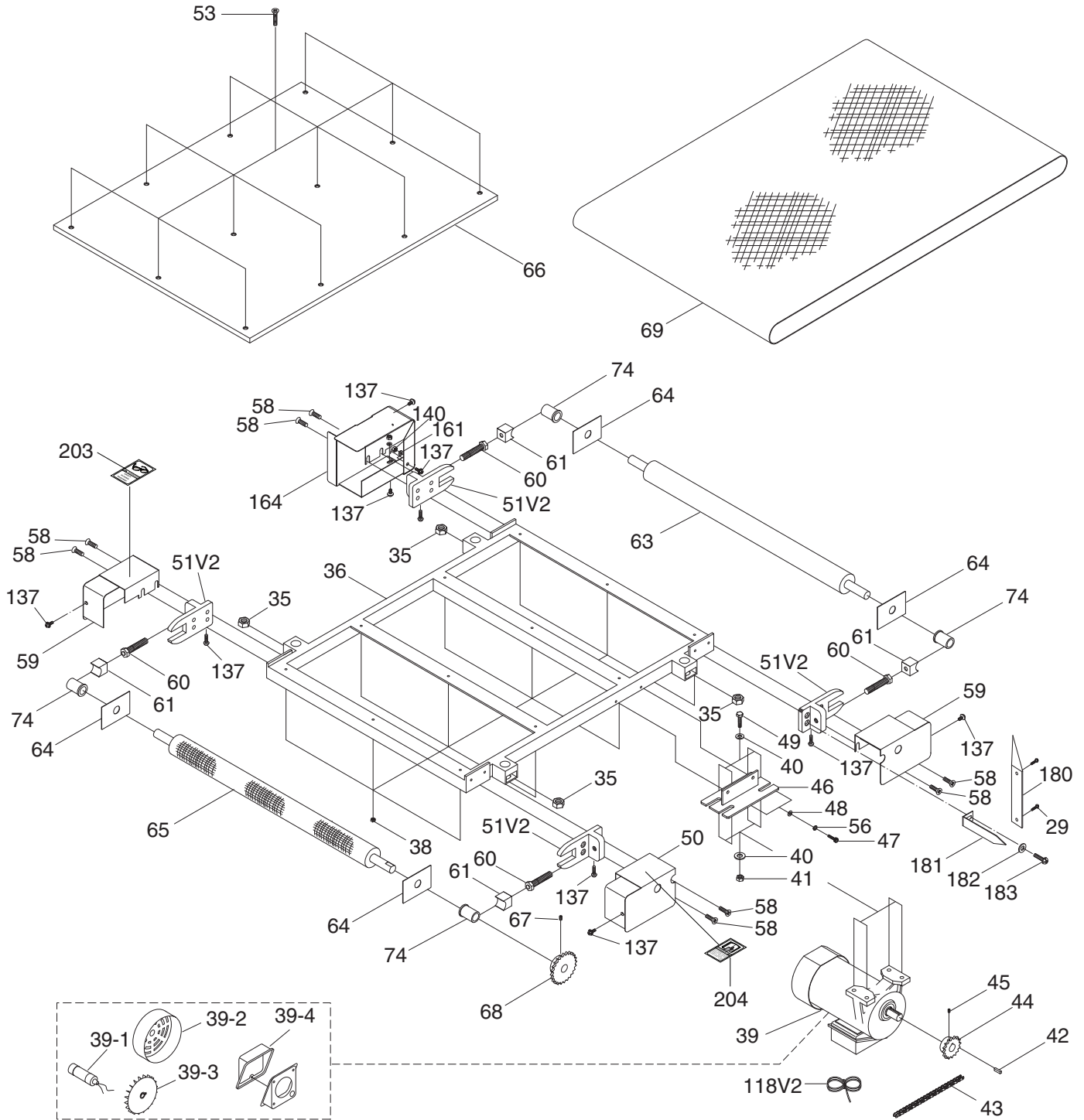


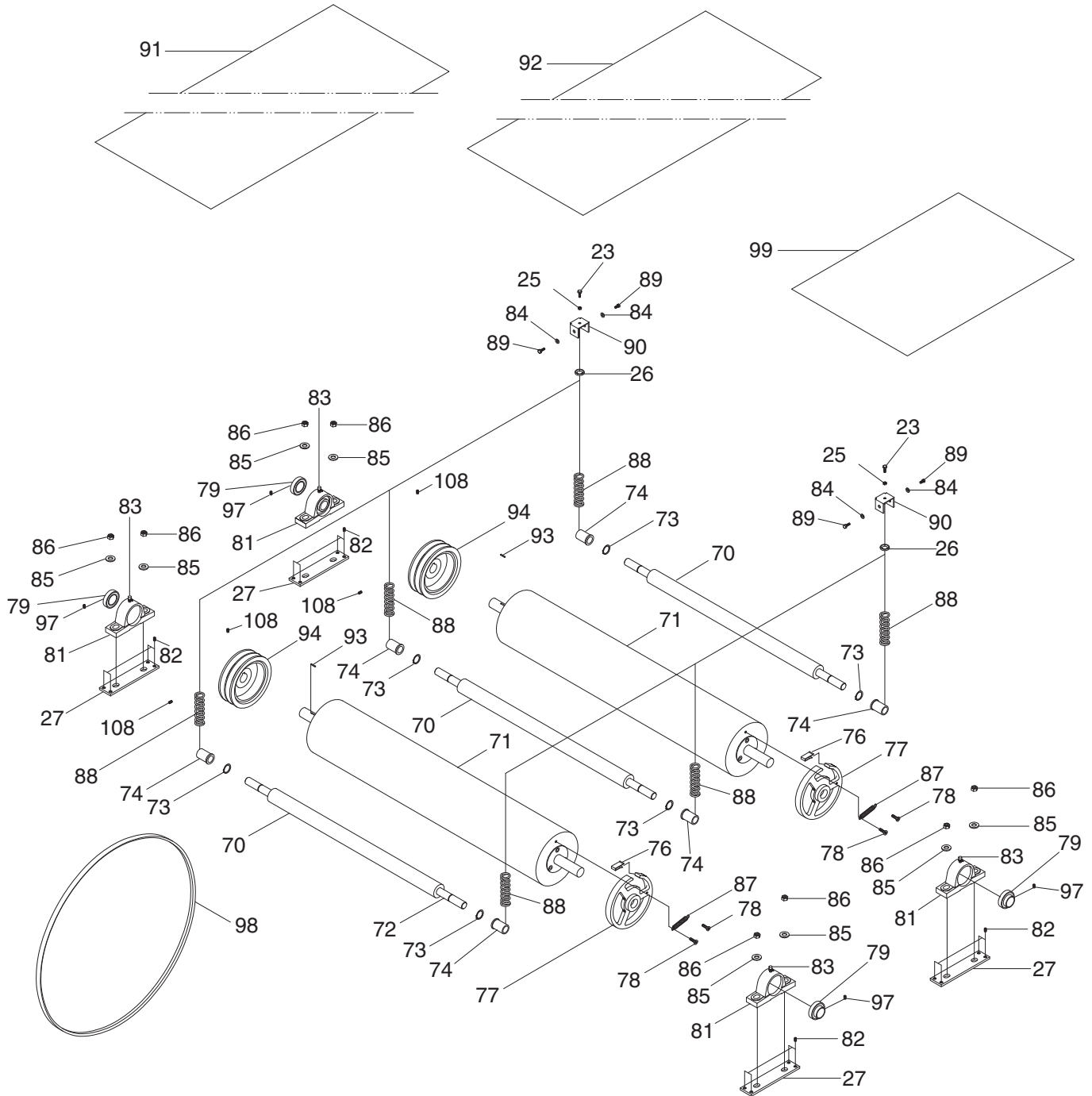
G1079R Stand & Table Elevation



G1079R Conveyor Belt & Table



G1079R Drum & Roller Mechanism



G1079R Parts List

REF	PART #	DESCRIPTION
1	P1079R001	FRAME
2	P1079R002	HEX NUT 3/8-16
3	P1079R003	FLAT WASHER 3/8
4	P1079R004	SIDE PANEL
5	P1079R005	BUSHING
6	P1079R006	SPROCKET
7	P1079R007	SPROCKET
7-1	P1079R007-1	SHAFT
8	P1079R008	TABLE SCREW 3/4-16
8-1	P1079R008-1	TABLE SCREW SHIM 1/2 X 27 X 1
8-2	P1079R008-2	TABLE SCREW SHIM 1/2 X 28 X 3
9	P1079R009	ELEVATION CHAIN
10	P1079R010	FRONT BRACE
11	P1079R011	SET SCREW 1/4-20 X 1/2
12	P1079R012	COMPLETE CRANK HANDLE ASSY
13	P1079R013	DUST PORT
14V2	P1079R014V2	HOOD V2.02.11
15V2	P1079R015V2	REAR BRACE V2.02.11
16V2	P1079R016V2	REAR PANEL V2.02.11
17	P1079R017	SET SCREW 5/16-18 X 1/2
18	P1079R018	MOTOR PULLEY
19	P1079R019	KEY 1/4 X 1/4 X 3
20	P1079R020	DRUM MOTOR 2HP, 220V, 1-PH
20-1	P1079R020-1	DRUM MOTOR FAN COVER
20-2	P1079R020-2	DRUM MOTOR FAN
20-3	P1079R020-3	S CAPACITOR 400M 125V 1-3/4 X 3-3/8
20-4	P1079R020-4	DRUM MOTOR JUNCTION BOX
20-5	P1079R020-5	CENTRIFUGAL SWITCH
21	P1079R021	HEX NUT 3/8-16
22	P1079R022	HEX BOLT 3/8-16 X 3/4
23	P1079R023	HEX BOLT 1/4-20 X 3/4
24	P1079R024	FLAT WASHER 3/8
25	P1079R025	HEX NUT 1/4-20
26	P1079R026	SPRING PLATE
27	P1079R027	ADJUST PLATE
29	P1079R029	TAP SCREW #6 X 1/2
31V2	P1079R031V2	POWER CORD 14G 3W 7' V2.02.09
32V2	P1079R032V2	FRONT PANEL V2.02.11
33V2	P1079R033V2	SINGLE PHASE ON/OFF SWITCH V2.02.11
34	P1079R034	HEX NUT 5/16-18
35	P1079R035	HEX NUT 3/4-16
36	P1079R036	TABLE FRAME
38	P1079R038	LOCK NUT 1/4-20
39	P1079R039	FEED MOTOR 1/4HP
39-1	P1079R039-1	R CAPACITOR 12M 350V 1-1/2 X 2
39-2	P1079R039-2	FEED MOTOR FAN COVER
39-3	P1079R039-3	FEED MOTOR FAN
39-4	P1079R039-4	FEED MOTOR JUNCTION BOX
40	P1079R040	FLAT WASHER 5/16
41	P1079R041	HEX NUT 5/16-18
42	P1079R042	KEY 5 X 5 X 20
43	P1079R043	DRIVE CHAIN
44	P1079R044	SPROCKET
45	P1079R045	SET SCREW 1/4-20 X 1/4
46	P1079R046	MOTOR BRACKET

REF	PART #	DESCRIPTION
47	P1079R047	CAP SCREW 1/4-20 X 3/4
48	P1079R048	FLAT WASHER 1/4
49	P1079R049	HEX BOLT 5/16-18 X 1
50	P1079R050	GUARD HINGED LEFT
51V2	P1079R051V2	ROLLER BRACKET V2.02.11
53	P1079R053	FLAT HD SCR 1/4-20 X 2-3/8
55	P1079R055	LATCH
56	P1079R056	LOCK WASHER 1/4
58	P1079R058	CAP SCREW 1/4-20 X 3/4
59	P1079R059	ROLLER GUARD
60	P1079R060	ROLLER AJUST BOLT 1/2-13 X 70
61	P1079R061	BUSHING SUPPORT
63	P1079R063	IDLER ROLLER
64	P1079R064	PLATE
65	P1079R065	DRIVE ROLLER
66	P1079R066	TABLE
67	P1079R067	SET SCREW 1/4-20 X 1/2
68	P1079R068	SPROCKET
69	P1079R069	RUBBER CONVEYOR BELT
70	P1079R070	PRESSURE ROLLER
71	P1079R071	SANDING DRUM
73	P1079R073	EXT RETAINING RING 19MM
74	P1079R074	BUSHING
76	P1079R076	CLIP
77	P1079R077	TENSION WHEEL
78	P1079R078	FLAT HD ALLEN SCR 1/4-20 X 1/2
79	P1079R079	PILLOW BLOCK BEARING UCP205
81	P1079R081	BEARING BLOCK
82	P1079R082	SET SCREW 5/16-24 X 1/2
83	P1079R083	GREASE FITTING M6-1 X 5
84	P1079R084	FLAT WASHER 1/4
85	P1079R085	FLAT WASHER 3/8
86	P1079R086	LOCK NUT 3/8-16
87	P1079R087	TENSION SPRING
88	P1079R088	COMPRESSION SPRING
89	P1079R089	HEX BOLT 1/4-20 X 3/8
90	P1079R090	BRACKET
91	P1079R091	SANDING ROLL 6" x 50' A60-X CLOTH
92	P1079R092	SANDING ROLL 6" x 50' A100-X CLOTH
93	P1079R093	KEY 6 X 6 X 30
94	P1079R094	SANDING DRUM PULLEY
97	P1079R097	SET SCREW 3/8-16 X 1/2
98	P1079R098	V-BELT B60
99	P1079R099	FELT 19 X 24 IN
100	P1079R100	SWITCH BOX
101	P1079R101	STRIKE
104	P1079R104	CONTROL WIRE 1015 16G 130MM
105	P1079R105	OVERLOAD BUTTON MB-15A
108	P1079R108	SET SCREW 1/4-20 X 1/2
116	P1079R116	DUST SCOOP DEFLECTOR
117V2	P1079R117V2	MOTOR CORD 16G 3W 30" V2.02.11
118V2	P1079R118V2	FEED MOTOR CORD V2.02.09
137	P1079R137	FLANGE BOLT 10-24 X 3/8
139	P1079R139	TAP SCREW #8 X 1/2
140	P1079R140	FLAT WASHER #10
149	P1079R149	HEX WRENCH 3MM



G1079R Parts List (Cont.)

REF	PART #	DESCRIPTION
150	P1079R150	HINGE
151	P1079R151	HANDLE
152	P1079R152	LEFT SUPPORT ARM
153	P1079R153	RIGHT SUPPORT ARM
154	P1079R154	CAP SCREW 5/16-18 X 5/8
155	P1079R155	HEX NUT 5/16-18
156	P1079R156	PHLP HD SCR 2-32 X 1/2
157	P1079R157	HEX NUT 2-32
158	P1079R158	FRONT CHAIN COVER
159	P1079R159	REAR CHAIN COVER
160	P1079R160	PHLP HD SCR 10-24 X 3/8
161	P1079R161	FLAT WASHER #10
162	P1079R162	HEX NUT 10-24
163	P1079R163	PLATE
164	P1079R164	LEFT REAR ROLLER GUARD
165	P1079R165	PHLP HD SCR 10-24 X 1/2
166	P1079R166	HEX NUT 10-24
167	P1079R167	EXT TOOTH WASHER #10

REF	PART #	DESCRIPTION
168	P1079R168	STRAIN RELIEF SB6R-3
174	P1079R174	STRAIN RELIEF MGB16-10B
175	P1079R175	PADLOCK STORAGE HOOK
176	P1079R176	SWITCH PADLOCK
177	P1079R177	TAP SCREW #8 X 1/2
178	P1079R178	TAP SCREW #8 X 3/8
179	P1079R179	PHLP HD SCR 5-32 X 1/4
180	P1079R180	DEPTH SCALE
181	P1079R181	SCALE POINTER
182	P1079R182	FLAT WASHER 1/4
183	P1079R183	PHLP HD SCR 1/4-20 X 3/8
200	P1079R200	MACHINE ID/WARNING LABEL
203	P1079R203	SAFETY GLASSES LABEL 2W X 3.3H
204	P1079R204	READ MANUAL LABEL 2W X 3.3H
205	P1079R205	DISCONNECT SANDER LABEL 220V
206	P1079R206	ELECTRICITY LABEL 1.4W X 1.2H
208	P1079R208	FEED ONLY ONE LABEL V1.07.02
209	P1079R209	GRIZZLY NAMEPLATE- SMALL

