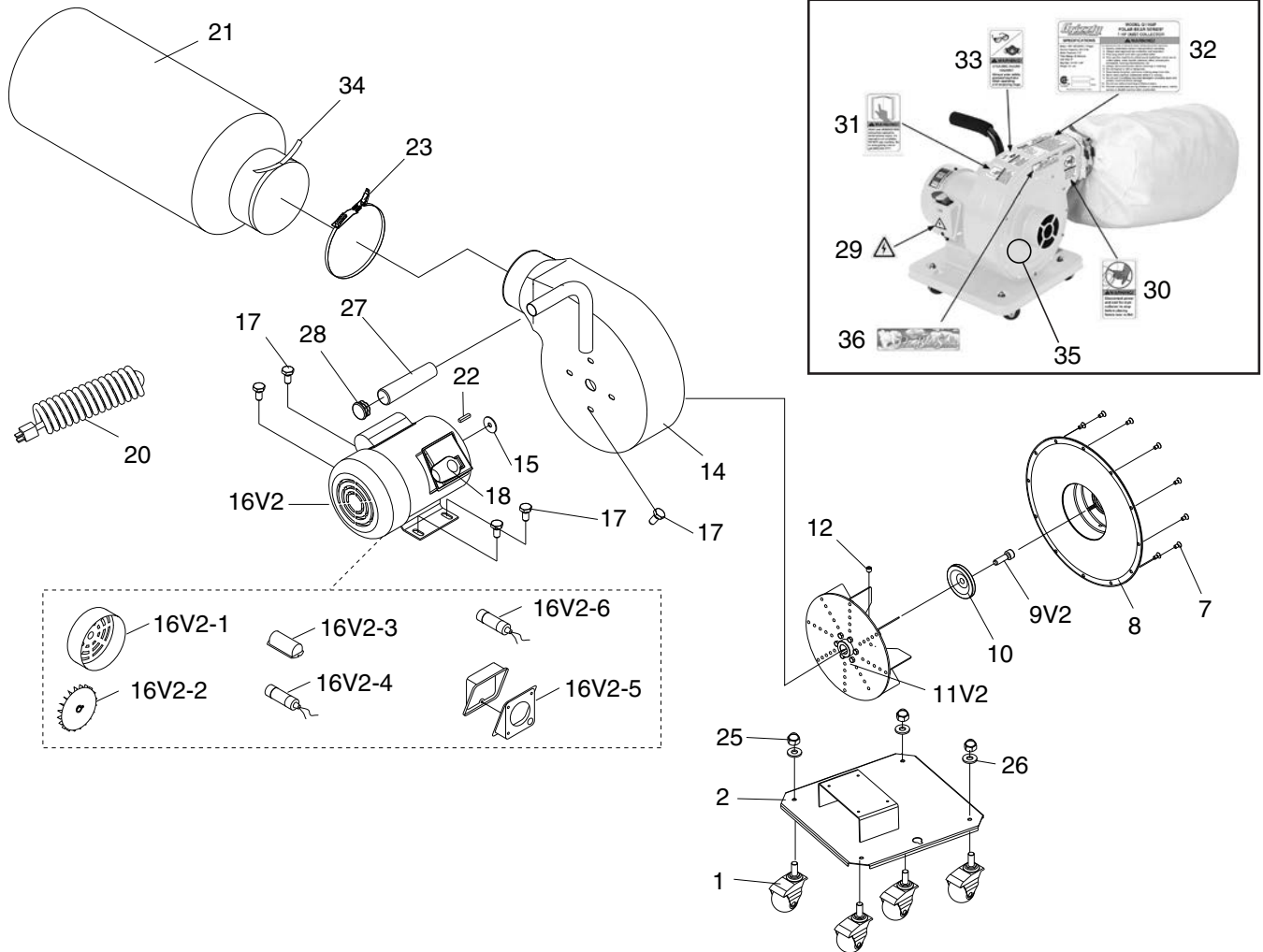


SECTION 9: PARTS

G1163P Main Breakdown



REF	PART #	DESCRIPTION
1	P1163P001A	CASTER
2	P1163P002	BASE
7	P1163P007	PHLP HD SCR M5-.8 X 10
8	P1163P008	INLET COVER
9V2	P1163P009V2	CAP SCREW M6-1 X 30 (LH) V2.07.15
10	P1163P010	MOTOR FAN WASHER
11V2	P1163P011V2	IMPELLER 10", CAST ALUMINUM V2.09.12
12	P1163P012	SET SCREW 5/16-18 X 3/8
14	P1163P014	COLLECTOR BODY W/ HANDLE
15	P1163P015	GASKET
16V2	P1163P016V2	MOTOR 1HP 120V/240V 1-PH V2.09.11
16V2-1	P1163P016V2-1	FAN COVER
16V2-2	P1163P016V2-2	MOTOR FAN
16V2-3	P1163P016V2-3	CAPACITOR COVER
16V2-4	P1163P016V2-4	S CAPACITOR 200M 125V 1-3/8 X 2-3/4
16V2-5	P1163P016V2-5	JUNCTION BOX
16V2-6	P1163P016V2-6	R CAPACITOR 30M 250V 1-3/8 X 2-1/2
17	P1163P017	FLANGE BOLT 1/4-20 X 1/2

REF	PART #	DESCRIPTION
18	P1163P018	PADDLE SWITCH 110V/220V W/KEY
20	P1163P020	POWER CORD 16AWG X 3W 73"L 5-15
21	P1163P021	REPLACEMENT BAG FOR G1163
22	P1163P022	KEY 5 X 5 X 25
23	P1163P023	CLAMP
25	P1163P025	ACORN NUT 5/16-18
26	P1163P026	FLAT WASHER 5/16
27	P1163P027	HANDLE COVER
28	P1163P028	HANDLE CAP
29	P1163P029	ELECTRICITY LABEL
30	P1163P030	HANDS/OUTLET LABEL
31	P1163P031	READ MANUAL LABEL
32	P1163P032	MACHINE ID LABEL CSA
33	P1163P033	GLASSES/RESPIRATOR LABEL
34	P1163P034	FOAM STRIP 4 X 20 X 430MM
35	P1163P035	POLAR BEAR WHITE PAINT
36	P1163P036	POLAR BEAR LOGO 1 X 3-3/4

