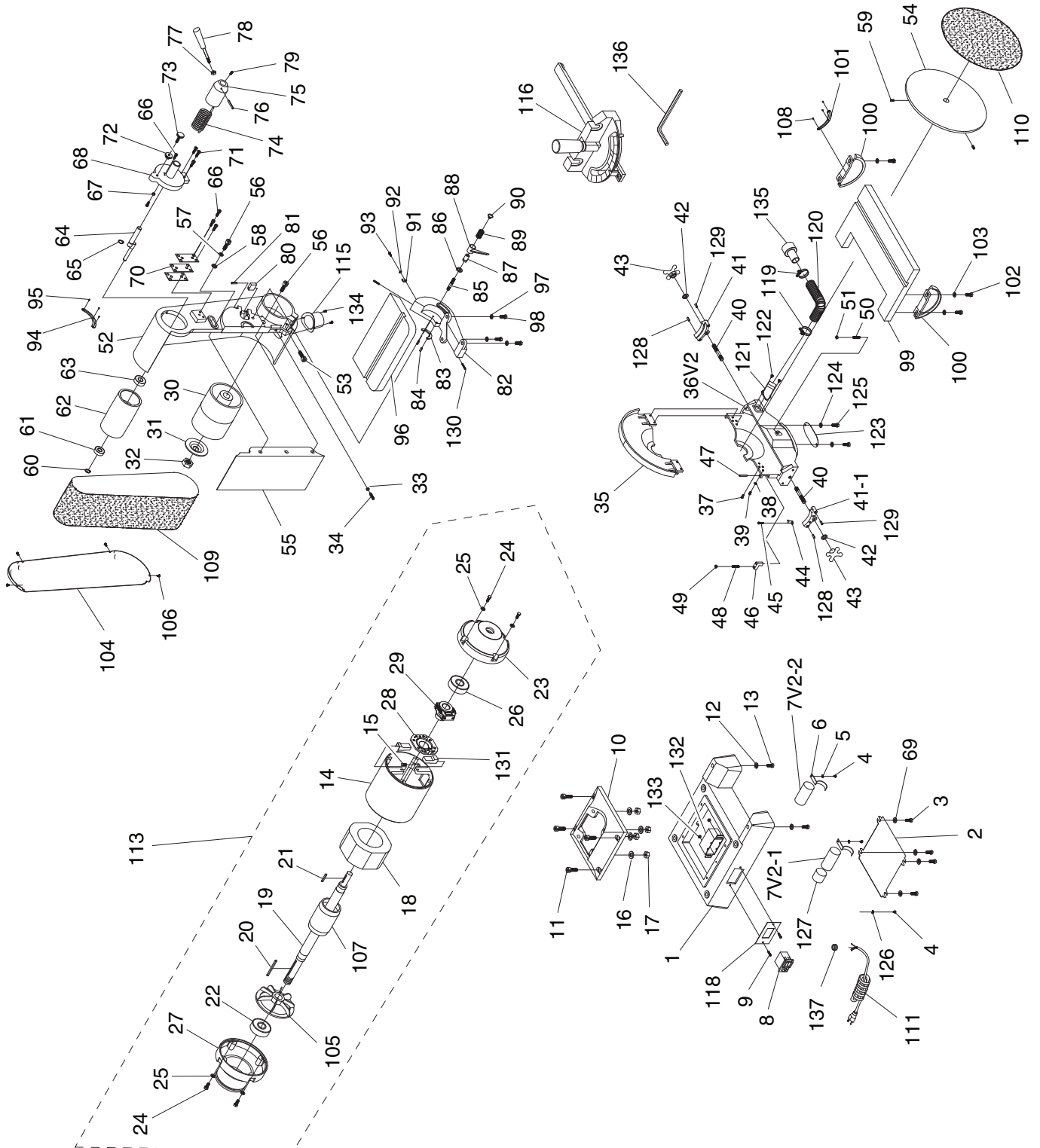


SECTION 9: PARTS

Main Breakdown



Main Parts List

REF	PART #	DESCRIPTION
1	P1183001	BASE ALUMINUM
2	P1183002	BASE PLATE PLASTIC
3	PB06M	HEX BOLT M8-1.25 X 12
4	PFS03	FLANGE SCREW 10-24 X 3/8
5	PTLW01	EXT TOOTH WASHER #10
6	P1183006	CAPACITOR CLIP
7V2-1	PC200H	S CAPACITOR 200M 250V 1-1/2 X 3-1/8
7V2-2	PC025A	R CAPACITOR 25M 350V 1-1/2 X 3-5/8
8	P1183008	PUSH BUTTON SWITCH 110/220V
9	PS13	PHLP HD SCR 10-24 X 1-1/4
10	P1183010	MOTOR BASE
11	PCAP31M	CAP SCREW M8-1.25 X 25
12	PW02	FLAT WASHER 3/8
13	PB24	HEX BOLT 3/8-16 X 1-1/4
14	P1183014	MOTOR HOUSING
15	PB11	HEX BOLT 5/16-18 X 1-1/2
16	PW07	FLAT WASHER 5/16
17	PN02	HEX NUT 5/16-18
18	P1183018	STATOR 2-P 160 X 80 X 55MM (G1183)
18	P1276018	STATOR 4-P 160 X 80 X 55MM (G1276)
19	P1183019	STATOR SHAFT (G1183)
19	P1276019	STATOR SHAFT (G1276)
20	PK16M	KEY 5 X 5 X 65
21	PK126M	KEY 5 X 5 X 32
22	P6206ZZ	BALL BEARING 6206ZZ
23	P1183023	RIGHT MOTOR COVER
24	PB32	HEX BOLT 5/16-18 X 5/8
25	PW07	FLAT WASHER 5/16
26	P6206ZZ	BALL BEARING 6206ZZ
27	P1183027	LEFT MOTOR COVER
28	P1183028	CONTACT PLATE (G1183)
28	P1276028	CONTACT PLATE (G1276)
29	P1183029	CENTRIFUGAL SWITCH (G1183)
29	P1276029	CENTRIFUGAL SWITCH (G1276)
30	P1183030	LOWER BELT ROLLER 5"
31	P1183031	ROLLER FLANGE 25MM
32	PN18	HEX NUT 1-8 LH
33	PN01M	HEX NUT M6-1
34	PSS12M	SET SCREW M6-1 X 25
35	P1183035	UPPER DISC GUARD
36V2	P1183036V2	LOWER DISC HOUSING V2.03.10
37	PS06	PHLP HD SCR 10-24 X 3/8
38	PW03	FLAT WASHER #10
39	PS01	PHLP HD SCR 10-24 X 1/2
40	P1183040	SHOULDER STUD 7/16-14
41	P1183041	REAR TRUNNION
41-1	P1183041-1	FRONT TRUNNION

REF	PART #	DESCRIPTION
42	PW04	FLAT WASHER 7/16
43	P1183043	STAR KNOB
44	P1183044	POINTER
45	PS18	PHLP HD SCR 10-24 X 1/4
46	P1183046	STOP BLOCK
47	PRP32M	ROLL PIN 6 X 40
48	PSS12M	SET SCREW M6-1 X 25
49	PN01M	HEX NUT M6-1
50	PSS01	SET SCREW 5/16-18 X 1
51	PN02	HEX NUT 5/16-18
52	P1183052	BELT HOUSING
53	PCAP12M	CAP SCREW M8-1.25 X 40
54	P1183054	SANDING DISC ALUMINUM
55	P1183055	BELT PLATEN
56	PCAP13M	CAP SCREW M8-1.25 X 30
57	PW07	FLAT WASHER 5/16
58	PW02	FLAT WASHER 3/8
59	PSS01M	SET SCREW M6-1 X 10
60	PR05M	EXT RETAINING RING 15MM
61	P6203ZZ	BALL BEARING 6203ZZ
62	P1183062	UPPER BELT ROLLER 3-1/2"
63	P6204ZZ	BALL BEARING 6204ZZ
64	P1183064	ECCENTRIC SHAFT
65	PR10M	EXT RETAINING RING 22MM
66	PCAP01M	CAP SCREW M6-1 X 16
67	PN01M	HEX NUT M6-1
68	P1183068	SHAFT BRACKET
69	PW01M	FLAT WASHER 8MM
70	P1183070	RETAINING PLATE
71	PCAP14M	CAP SCREW M8-1.25 X 20
72	P1183072	KNURLED CHECK NUT M8-1.25
73	P1183073	KNURLED BOLT M8-1.25 X 40
74	P1183074	TORSION SPRING 9-1/2 X 4MM
75	P1183075	LEVER HOLDER
76	PRP33M	ROLL PIN 6 X 50
77	PN08	HEX NUT 3/8-16
78	P1183078	BELT TENSION LEVER
79	PSS01M	SET SCREW M6-1 X 10
80	P1183080	STOP BLOCK
81	PRP33M	ROLL PIN 6 X 50
82	P1183082	TRUNNION
83	P1183083	PIVOT PLATE
84	PRP19M	ROLL PIN 4 X 14
85	P1183085	STUD-UDE 7/16-14 X 2-7/8 1-3/16, 11/16
86	PW04	FLAT WASHER 7/16
87	P1183087	LOCK LEVER NUT 7/16-14
88	P1183088	LOCK HANDLE



Main Parts List

REF	PART #	DESCRIPTION
89	P1183089	COMPRESSION SPRING
90	P1183090	LOCK HANDLE SCREW ALUMINUM
91	P1183091	POINTER
92	PW03	FLAT WASHER #10
93	PS18	PHLP HD SCR 10-24 X 1/4
94	P1183094	DEGREE SCALE
95	PRIV001M	STEEL FLUTED RIVET 2 X 5MM
96	P1183096	BELT SANDER TABLE
97	PW07	FLAT WASHER 5/16
98	PB03	HEX BOLT 5/16-18 X 1
99	P1183099	DISC SANDER TABLE
100	P1183100	TABLE TRUNNION
101	P1183101	DEGREE SCALE
102	PB07	HEX BOLT 5/16-18 X 3/4
103	PW07	FLAT WASHER 5/16
104	P1183104	BELT GUARD
105	P1183105	MOTOR FAN PLASTIC
106	PFS20	FLANGE SCREW 1/4-20 X 1/2
107	P1183107	ROTOR 2-POLE 80 X 50MM (G1183)
107	P1276107	ROTOR 4-POLE 80 X 50MM (G1276)
108	PRIV001M	STEEL FLUTED RIVET 2 X 5MM
109	P1183109	SANDING BELT 6" X 48" 80-GRIT
110	P1183110	SANDING DISC 12" 80-GRIT
111	P1183111	POWER CORD 14G 3C 6FT 5-15

REF	PART #	DESCRIPTION
113	P1183113	MOTOR 1HP 110/220V 3450RPM (G1183)
113	P1276113	MOTOR 1HP 110/220V 1725RPM (G1276)
115	P1183115	SANDING BELT DUST PORT 3"
116	P1183116	MITER GAUGE ASSEMBLY
118	P1183118	SWITCH PLATE
119	P1183119	HOSE CLAMP 1-1/2"
120	P1183120	DUST HOSE 1-1/2" X 10"
121	P1183121	DUST CHUTE
122	PFS03	FLANGE SCREW 10-24 X 3/8
123	P1183123	LOWER DISC BRACKET COVER
124	PW07	FLAT WASHER 5/16
125	PB09	HEX BOLT 5/16-18 X 1/2
126	P1183126	FLAT WASHER #10 COPPER
127	P1183127	CAPACITOR END CAP
128	PRP32M	ROLL PIN 6 X 40
129	PRP33M	ROLL PIN 6 X 50
130	PSS12M	SET SCREW M6-1 X 25
131	P1183131	CENTRIFUGAL SWITCH BRACKET
132	P1183132	SWITCH BOX
133	PN07	HEX NUT 10-24
134	PFS16	FLANGE SCREW 1/4-20 X 1/2
135	P1183135	DUST HOSE ADAPTER 2-1/2" X 1-1/2"
136	PAW06M	HEX WRENCH 6MM
137	P1183137	STRAIN RELIEF

WARNING

Safety labels help reduce the risk of serious injury caused by machine hazards. If any label comes off or becomes unreadable, the owner of this machine **MUST** replace it in the original location before resuming operations. For replacements, contact (800) 523-4777 or www.grizzly.com.

