



MODEL G2530

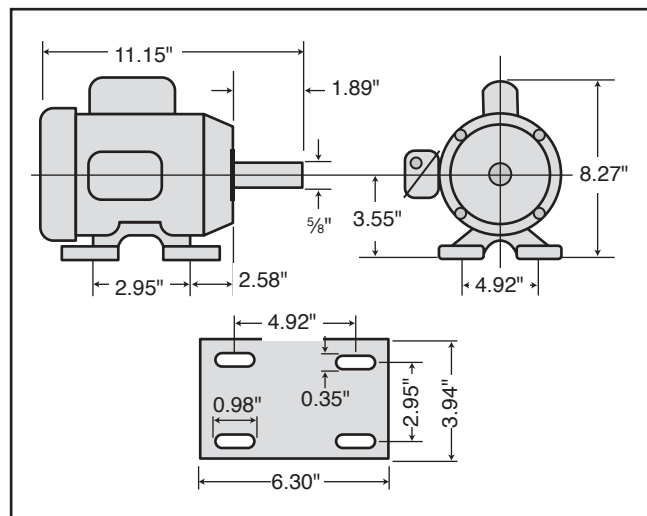
3/4 HP ELECTRIC MOTOR

INSTRUCTIONS

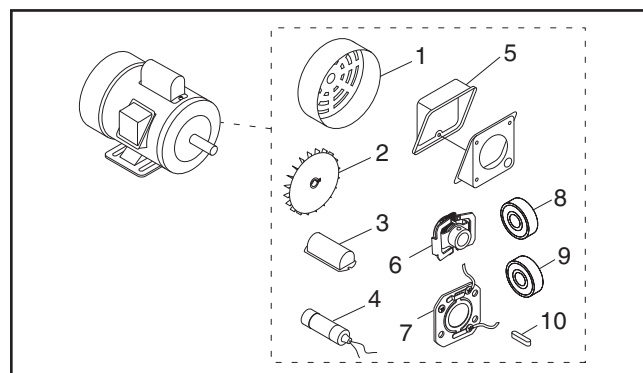
For questions or help with this product contact Tech Support at (570) 546-9663 or techsupport@grizzly.com

Model G2530 Specifications

Power 3/4 HP
 Cycle..... 60 Hz
 Voltage..... 110V/220V
 Prewired 110V
 Amps 10.3A/5.2A
 Speed 1725 RPM
 Phase Single-Phase
 Class..... E



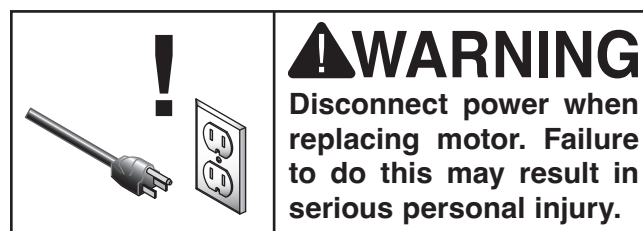
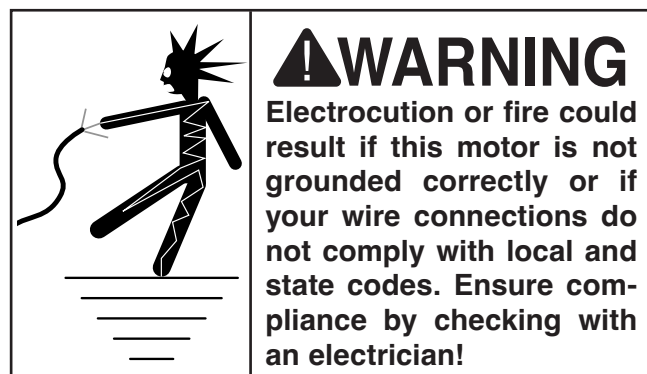
Replaceable Parts



REF	PART #	DESCRIPTION
1	P2530001	MOTOR FAN COVER
2	P2530002	MOTOR FAN
3	P2530003	S CAPACITOR COVER
4	P2530004	S CAPACITOR 200M 125V 1-3/8 X 2-3/8
5	P2530005	JUNCTION BOX
6	P2530006	CENTRIFUGAL SWITCH 1/2-1725
7	P2530007	CONTACT PLATE
8	P2530008	BALL BEARING 6202ZZ
9	P2530009	BALL BEARING 6203ZZ
10	P2530010	KEY 3/16 X 3/16 X 1-1/4

Making Wire Connections

If you are unsure how to attach wires to terminals, DO NOT continue. Contact an electrician for assistance. Connecting wires improperly may cause electrocution, fire, or a short.



COPYRIGHT © JUNE, 2012 BY GRIZZLY INDUSTRIAL, INC., REVISED JUNE, 2024 (LW)
 NO PORTION OF THIS INSTRUCTION SHEET MAY BE REPRODUCED IN ANY SHAPE
 OR FORM WITHOUT THE WRITTEN APPROVAL OF GRIZZLY INDUSTRIAL, INC.
 (FOR MODELS MFD. SINCE 07/24) #KN15072 PRINTED IN TAIWAN

V2.06.24

Keep for Future Reference