



MODEL G2531

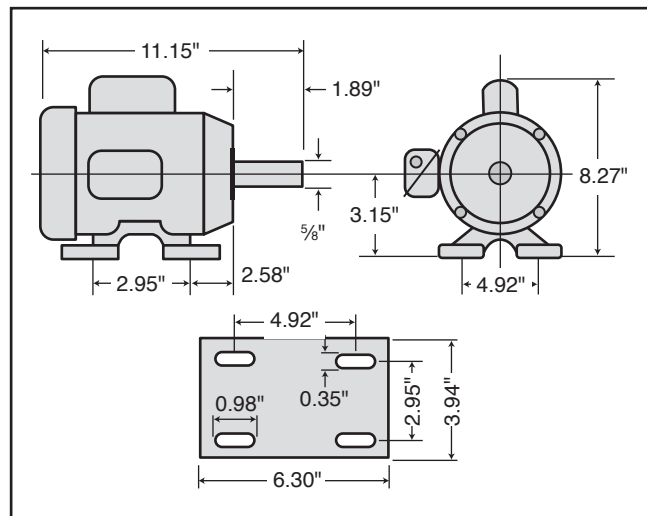
3/4 HP ELECTRIC MOTOR

INSTRUCTIONS

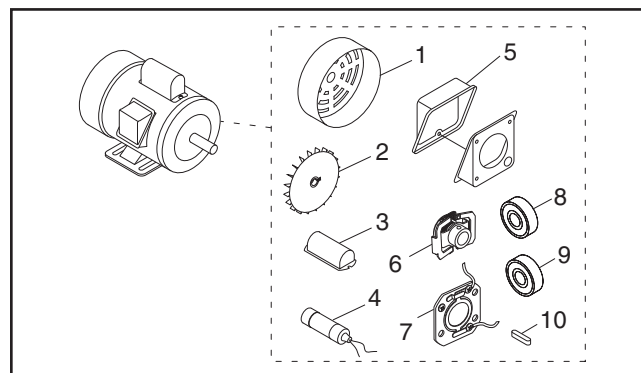
For questions or help with this product contact Tech Support at (570) 546-9663 or techsupport@grizzly.com

Model G2531 Specifications

Power 3/4 HP
 Cycle.....60 Hz
 Voltage.....110V/220V
 Prewired 110V
 Amps 9.6/4.8A
 Speed 3450 RPM
 Phase Single-Phase
 Class..... E



Replaceable Parts

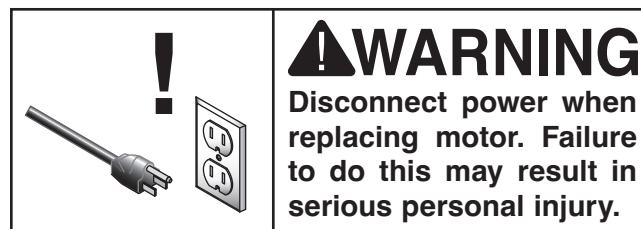
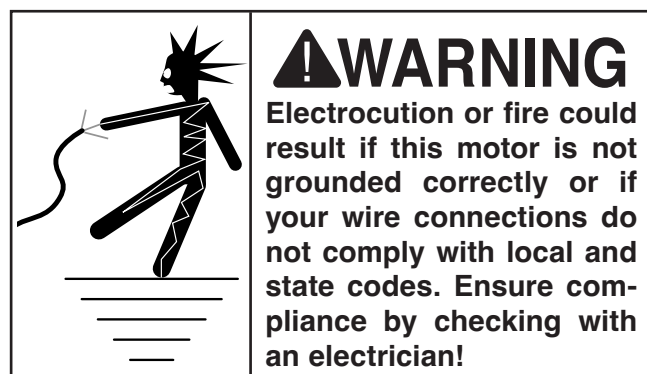


REF PART # DESCRIPTION

1	P2531001	MOTOR FAN COVER
2	P2531002	MOTOR FAN
3	P2531003	S CAPACITOR COVER
4	P2531004	S CAPACITOR 200M 125V 1-3/8 X 2-3/8
5	P2531005	JUNCTION BOX
6	P2531006	CENTRIFUGAL SWITCH 1/2-3450
7	P2531007	CONTACT PLATE
8	P2531008	BALL BEARING 6202ZZ
9	P2531009	BALL BEARING 6203ZZ
10	P2531010	KEY 3/16 X 3/16 X 1-1/4

Making Wire Connections

If you are unsure how to attach wires to terminals, DO NOT continue. Contact an electrician for assistance. Connecting wires improperly may cause electrocution, fire, or a short.



COPYRIGHT © JUNE, 2012 BY GRIZZLY INDUSTRIAL, INC., REVISED JUNE, 2024 (LW)
 NO PORTION OF THIS INSTRUCTION SHEET MAY BE REPRODUCED IN ANY SHAPE
 OR FORM WITHOUT THE WRITTEN APPROVAL OF GRIZZLY INDUSTRIAL, INC.
 (FOR MODELS MFD. SINCE 07/24) #KN15073 PRINTED IN TAIWAN

V2.06.24

Keep for Future Reference