

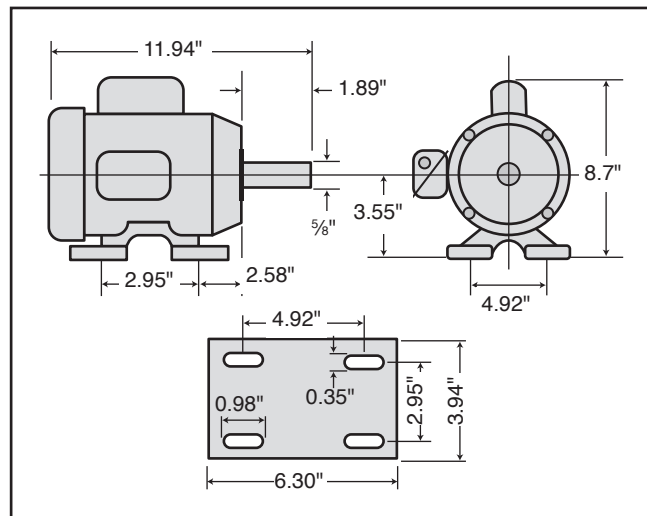


# MODEL G2533 1 HP ELECTRIC MOTOR INSTRUCTIONS

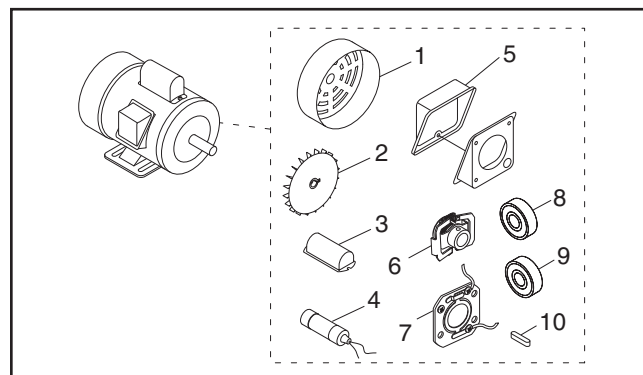
For questions or help with this product contact Tech Support at (570) 546-9663 or techsupport@grizzly.com

## Model G2533 Specifications

Power ..... 1 HP  
Cycle.....60 Hz  
Voltage.....110V/220V  
Prewired ..... 110V  
Amps ..... 12.6/6.3A  
Speed ..... 3450 RPM  
Phase ..... Single-Phase  
Class..... E



## Replaceable Parts

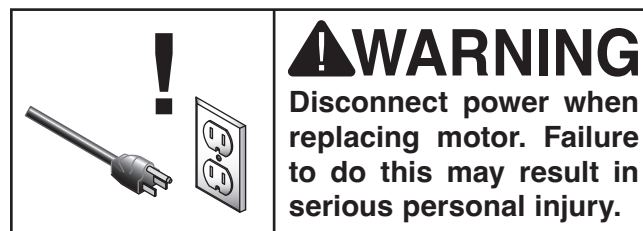
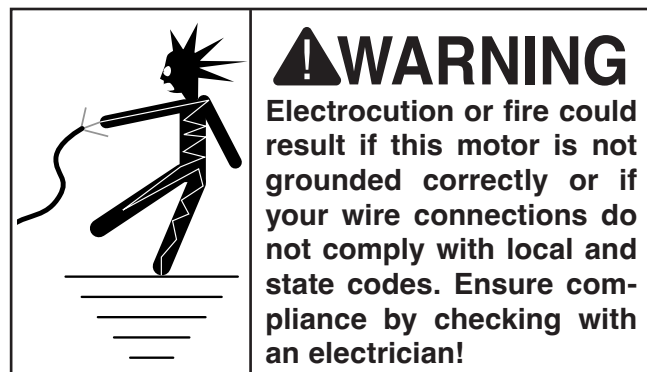


### REF PART # DESCRIPTION

1	P2533001	MOTOR FAN COVER
2	P2533002	MOTOR FAN
3	P2533003	S CAPACITOR COVER
4	P2533004	S CAPACITOR 300M 125V 1-3/4 X 3-3/8
5	P2533005	JUNCTION BOX
6	P2533006	CENTRIFUGAL SWITCH 1/2-3450
7	P2533007	CONTACT PLATE
8	P2533008	BALL BEARING 6202ZZ
9	P2533009	BALL BEARING 6203ZZ
10	P2533010	KEY 3/16 X 3/16 X 1-1/4

## Making Wire Connections

If you are unsure how to attach wires to terminals, DO NOT continue. Contact an electrician for assistance. Connecting wires improperly may cause electrocution, fire, or a short.



COPYRIGHT © JUNE, 2012 BY GRIZZLY INDUSTRIAL, INC., REVISED JUNE, 2024 (LW)  
NO PORTION OF THIS INSTRUCTION SHEET MAY BE REPRODUCED IN ANY SHAPE  
OR FORM WITHOUT THE WRITTEN APPROVAL OF GRIZZLY INDUSTRIAL, INC.  
(FOR MODELS MFD. SINCE 08/24) #KN15075 PRINTED IN TAIWAN

V2.06.24

\*\*\*Keep for Future Reference\*\*\*