



MODEL G2534

1½ HP ELECTRIC MOTOR

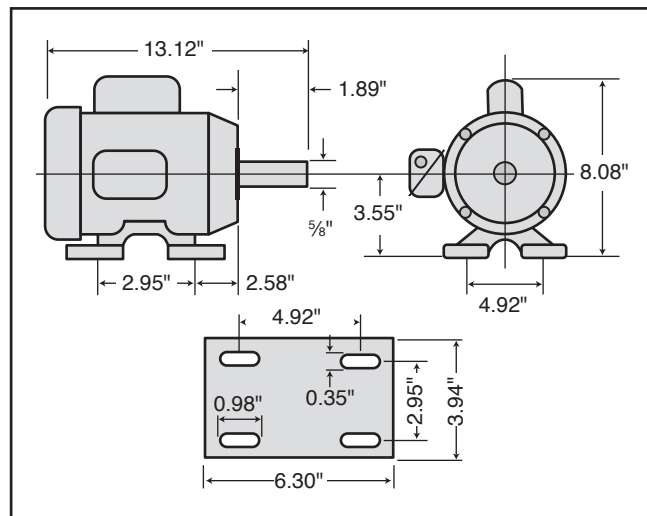
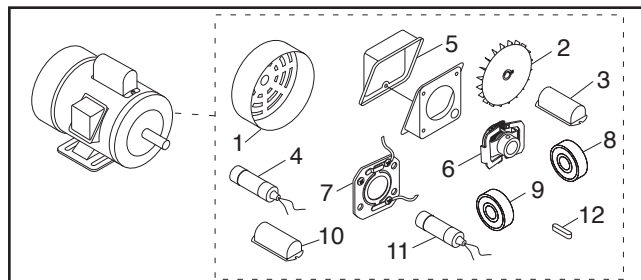
INSTRUCTIONS

For questions or help with this product contact Tech Support at (570) 546-9663 or techsupport@grizzly.com

Model G2534 Specifications

Power 1½ HP
 Cycle.....60 Hz
 Voltage.....110V/220V
 Prewired 110V
 Amps17A/8.5A
 Speed1725 RPM
 PhaseSingle-Phase
 Class.....E

Parts



REF PART # DESCRIPTION

1	P2534001	MOTOR FAN COVER
2	P2534002	MOTOR FAN
3	P2534003	S CAPACITOR COVER
4	P2534004	S CAPACITOR 400M 125V 1-3/4 X 3-3/8
5	P2534005	JUNCTION BOX
6	P2534006	CENTRIFUGAL SWITCH 1/2-1725
7	P2534007	CONTACT PLATE
8	P2534008	BALL BEARING 6202ZZ
9	P2534009	BALL BEARING 6203ZZ
10	P2534010	R CAPACITOR COVER
11	P2534011	R CAPACITOR 50M 250V 1-1/2 X 2-3/4
12	P2534012	KEY 3/16 X 3/16 X 1-1/4

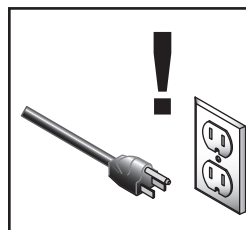
Making Wire Connections

If you are unsure how to attach wires to terminals, DO NOT continue. Contact an electrician for assistance. Connecting wires improperly may cause them to come loose or contact other wires, which can cause electrocution, fire, or a short.



! WARNING

Electrocution or fire could result if this motor is not grounded correctly or if your wire connections do not comply with local and state codes. Ensure compliance by checking with an electrician!



! WARNING

Disconnect power when replacing motor. Failure to do this may result in serious personal injury.

COPYRIGHT © JUNE, 2012 BY GRIZZLY INDUSTRIAL, INC., REVISED APRIL, 2024 (LW)
 WARNING: NO PORTION OF THIS INSTRUCTION SHEET MAY BE REPRODUCED IN ANY SHAPE
 OR FORM WITHOUT THE WRITTEN APPROVAL OF GRIZZLY INDUSTRIAL, INC.
 #KN15076 PRINTED IN TAIWAN

Keep for Future Reference