



MODEL G2535

1½ HP ELECTRIC MOTOR

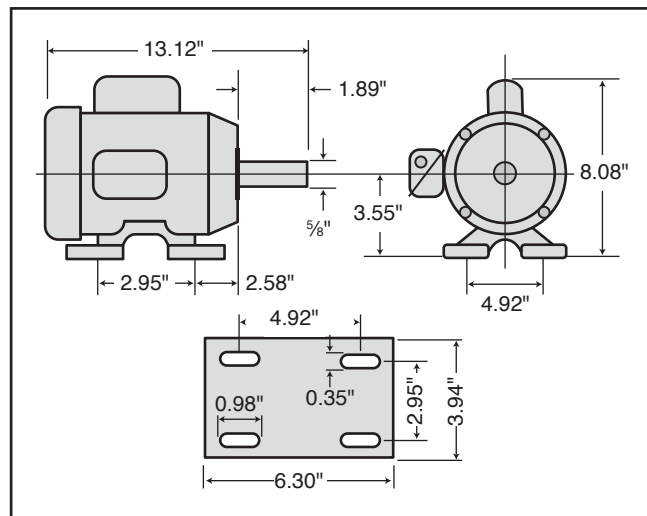
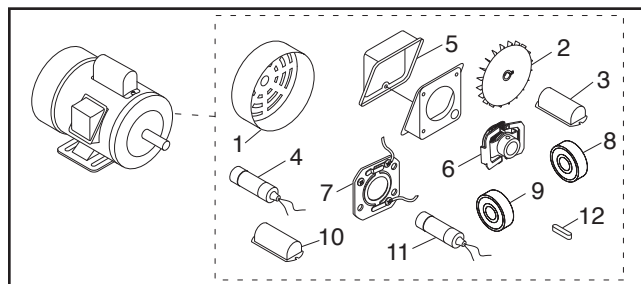
INSTRUCTIONS

For questions or help with this product contact Tech Support at (570) 546-9663 or techsupport@grizzly.com

Model G2535 Specifications

Power 1½ HP
 Cycle.....60 Hz
 Voltage.....110V/220V
 Prewired 110V
 Amps15.6A/7.8A
 Speed3450 RPM
 PhaseSingle-Phase
 Class.....E

Parts



REF PART # DESCRIPTION

1	P2535001	MOTOR FAN COVER
2	P2535002	MOTOR FAN
3	P2535003	S CAPACITOR COVER
4	P2535004	S CAPACITOR 400M 125V 1-3/4 X 3-3/8
5	P2535005	JUNCTION BOX
6	P2535006	CENTRIFUGAL SWITCH 1/2-3450
7	P2535007	CONTACT PLATE
8	P2535008	BALL BEARING 6202ZZ
9	P2535009	BALL BEARING 6203ZZ
10	P2535010	R CAPACITOR COVER
11	P2535011	R CAPACITOR 25M 250V 1-3/8 X 2-3/8
12	P2535012	KEY 3/16 X 3/16 X 1-1/4

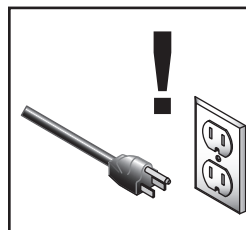
Making Wire Connections

If you are unsure how to attach wires to terminals, DO NOT continue. Contact an electrician for assistance. Connecting wires improperly may cause them to come loose or contact other wires, which can cause electrocution, fire, or a short.



! WARNING

Electrocution or fire could result if this motor is not grounded correctly or if your wire connections do not comply with local and state codes. Ensure compliance by checking with an electrician!



! WARNING

Disconnect power when replacing motor. Failure to do this may result in serious personal injury.

COPYRIGHT © JUNE, 2012 BY GRIZZLY INDUSTRIAL, INC., REVISED APRIL, 2024 (LW)
 WARNING: NO PORTION OF THIS INSTRUCTION SHEET MAY BE REPRODUCED IN ANY SHAPE
 OR FORM WITHOUT THE WRITTEN APPROVAL OF GRIZZLY INDUSTRIAL, INC.
 #KN15077 PRINTED IN TAIWAN

Keep for Future Reference