



# MODEL G2902

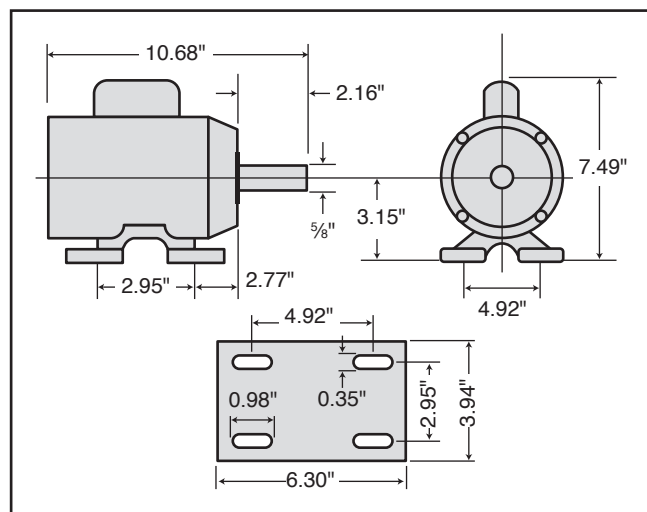
## 1/2 HP ELECTRIC MOTOR


### INSTRUCTIONS

For questions or help with this product contact Tech Support at (570) 546-9663 or techsupport@grizzly.com

#### Model G2902 Specifications

Power ..... 1/2 HP  
 Cycle.....60 Hz  
 Voltage.....110V/220V  
 Prewired ..... 110V  
 Amps .....8.6A/4.3A  
 Speed ..... 3450 RPM  
 Phase .....Single-Phase  
 Class.....E

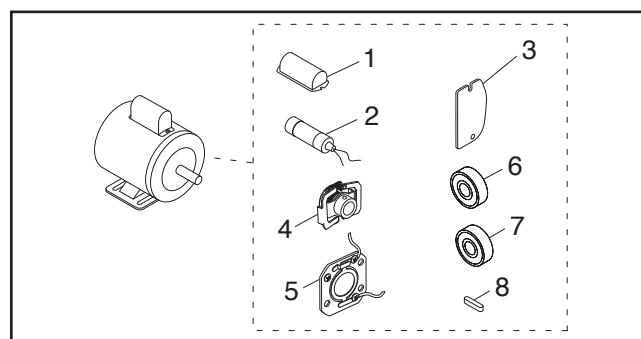




### !WARNING

Electrocution or fire could result if this motor is not grounded correctly or if your wire connections do not comply with local and state codes. Ensure compliance by checking with a qualified electrician!

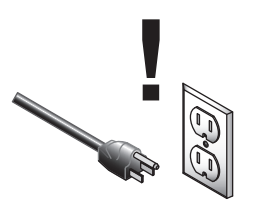
#### Replaceable Parts



REF	PART #	DESCRIPTION
1	P2902001	S CAPACITOR COVER
2	P2902002	S CAPACITOR 200M 125V 1-3/8 X 2-3/8
3	P2902003	WIRING COVER PLATE
4	P2902004	CENTRIFUGAL SWITCH 1/2-3450
5	P2902005	CONTACT PLATE
6	P2902006	BALL BEARING 6202ZZ
7	P2902007	BALL BEARING 6203ZZ
8	P2902008	KEY 3/16 X 3/16 X 1-1/4

#### Making Wire Connections

If you are unsure how to attach wires to terminals, DO NOT continue. Contact an electrician for assistance. Connecting wires improperly may cause them to come loose or contact other wires, which can cause electrocution, fire, or a short.



### !WARNING

Disconnect power when replacing motor. Failure to do this may result in serious personal injury.